

St. John Ervine's New Novel

THE FOOLISH LOVERS

By the author of "Changing Winds," "Mrs. Martin's Man," etc.

This realistic, humorous, wholly delightful novel of Irish life and character is the finished work of one of the most brilliant of the present day novelists. It is the story of a headstrong, rebellious young Irishman who goes to London in search of fame and romance, of the various women with whom he comes in contact, and of how their conflicting influences affect the course of his life. It is Ervine at his best—a book of the finest in contemporary fiction.

Ready Today at All Bookstores, \$2.00

THE MACMILLAN COMPANY Publishers NEW YORK

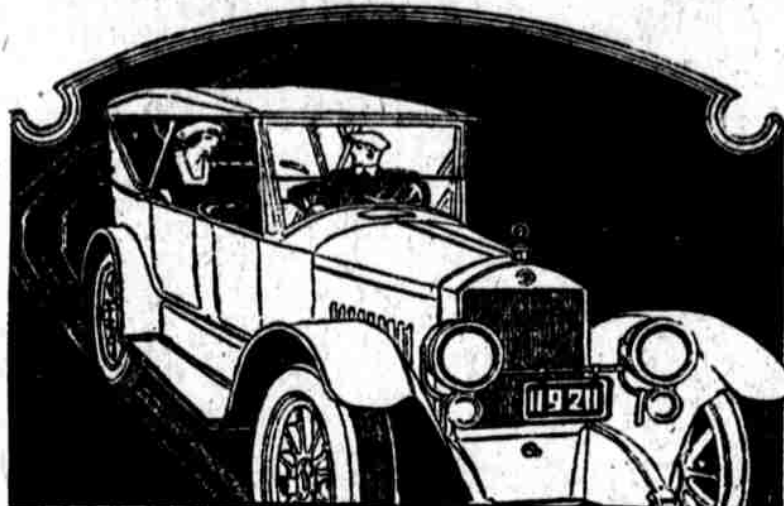


When Fitch's Steamboat stopped.

John Fitch, a clockmaker and silversmith of Philadelphia, invented a steamboat which made a trip from Kensington to Burlington. On the way back, however, the machinery went wrong and the boat stopped forever, much to the chagrin of the inventor and the worthy citizens who had invested their savings in the new enterprise.

There are many ventures that absorb through failure the savings of unfortunate investors, but there is one that cannot fail, and that is a SAVINGS FUND that is conducted wisely and conservatively. Investigate our Saving Fund plan.

GUARANTEE TRUST AND SAFE DEPOSIT CO.
1415 CHESTNUT STREET 816-18-20 CHESTNUT STREET 9 SOUTH 52D STREET



STANDARD EIGHT A Powerful Car

THE beautiful lines and luxury of your car please you, but you respect it for its power.

In time you come to love it for what it has done for you, and you depend upon it as you depend upon your friends.

To those men and women to whom a motor car is something more than a machine, we respectfully recommend the Standard Eight. Come and see the new models.

EASTERN MOTORS CORP.
655-7 N Broad St. Philadelphia, Pa.
Telephone PAelar 634P

Now Is the Time to Clean and Inspect Your Heating Plant

It Will Save You Considerable Expense Next Fall

THE Government has estimated that nearly one-fifth of the total coal production is absolutely wasted. One of the greatest items of waste is due to DIRTY BOILER FLUES, i. e., accumulation of soot. Soot left in the boiler becomes saturated from the moist air during the summer, releasing a sulphur product which is injurious to the metal of the heater due to its corrosive action. Soot is the most effective non-conductor of heat known to science. Soot in the heater flues means that you burn too much coal, because the heat generated by the fuel is not properly absorbed by the heating surface of the boiler.

PHILADELPHIA Inspection and Repair SERVICE

WE have a staff of experts—trained to detect the signs of wear or decay—that operates as a service under the supervision of a heating engineer. Phone or write when you have finished reading this and your order will be executed without delay.

For cleaning and inspection by these men you are charged pro. rate on a per diem basis. If repairs are recommended, we will submit you a report and estimate before proceeding with the work.

PHILADELPHIA SERVICE covers the whole field of mechanical equipment and repair work. Write or phone for particulars.

PHILADELPHIA STEAM HEATING CO.

ENGINEERS, JOBBERS, CONSTRUCTORS
Over 8000 Plants in Forty-one Years' Service

JUNIPER AND CHERRY STS., PHILADELPHIA

Heating—Piping—Steam Fitting—Ventilating Fans and Systems—
Plumbing—Electrical Construction—Sheet-Metal Work.

Store Hours: 9 to 5.30

These are times when Thrift counts. Thrift doesn't mean stingy saving. Real Thrift is spending wisely for things needed, as contrasted with ill-considered spending for things one doesn't need.

GIMBEL BROTHERS

MARKET · CHESTNUT · EIGHTH · NINTH
For Tomorrow—Thursday

Philadelphia, May 19, 1920

One can be thrifty and yet not deny one's self many a bit of luxury—let commonsense govern the spending. The Gimbel Store News is a daily Thrift Guide to wise spending.

This Sale of Groceries at Specially Low Prices Supplements the Recent Selling by Gimbels of Several Hundred Thousand Units of Government Army and Navy Surplus Foods Without Costing the Government and the City a Cent for the Service and Without Profit to Gimbel Brothers.

This extraordinary after-war service was rendered by the Gimbel Pure Food Store as a free-will offering to enable the Government and the City of Philadelphia to distribute surplus Army and Navy foods to the public in the quickest and most efficient manner. And the present sale of groceries is another effort to make the Store helpful to the utmost. Samples of the articles are on tables in the enlarged Order Room. A competent clerk sits with you, and these—

Order Room Tables Make Grocery Shopping Comfortable and Convenient

The prices are not made low to encourage over-buying—a hoarder is as dangerous as a real profiteer. But supply your reasonable needs.

Present prices are below any level that stores can afford. We could have done no good by usual "special offerings." We are willing to help you and The Fair Price Commission learn the real truth.

If prices have been too high, they will settle to your advantage. If they have been fair—and all must realize that no total depravity in business exists—then the skirts of the trade will be declared clear, and prices realized as "fair" will prevail.

You will realize in this move the brave surgery of a business to keep it healthy.

All through the store—and in all stores—prices are higher than of old—and the public has used the word "profiteer" lightly and carelessly. But at heart the public is fair, and it knows that the cost of a coat is not alone the price paid for it, but the expense of selling it to the wearer. On every hand expenses have increased. Now the public says: Stop it! More has been paid to every person concerned from the plough-boy (now-a-days the chauffeur of a tractor), to shepherd, wool dealer, railroad, corder, spinner, weaver, tailor—and the cost has gone into the garment. To not stop is to break the public's back. It is time for the ninety percent who are "just us" to be able to draw a full breath.

It is unlikely that the fabric of costs will decline rapidly. Healthily, it will decline very slowly—and be indicated in spots. All that is prayed for is, that from soup to nuts there will be no further advance; nor on the clothes you wear to the feast. And that sugar and gasoline will repent.

No mail or phone orders. Grocery deliveries will be made during the week.

Philadelphia Sugar-Cured Hams Fresh from the smoke house, all family size, limit one; lb. at.....	36 1/2c	Table Butter Clover Bloom fancy Creamery Table Butter, one-lb. prints counter delivery, at.....	68c	Corn Flakes Summer Breakfast Food, in waxite extra large packages, at pkg.....	12 1/2c
15,000 Pounds Gimbel's St. James Blend Coffee High grade, limit 25 pounds, in 10, 5- or 3-lb. lots, at lb.....	42c	Fresh Eggs 100 crates, new laid selected fresh Eggs, counter delivery in carton, at.....	48c	Red Ripe Tomatoes Solid Meat, family size cans, in case, dozen or half-dozen lots, at can.....	12 1/2c
20,000 Pounds Gimbel's Quaker Blend Tea Room Coffee Limit 25 pounds, in 10, 5- or 3-lb. lots, at lb.....	45c	Boneless Codfish Kodikook selected middle cuts, at 3-lb. wood box for.....	95c	California Prunes Thin-skin, large size, healthful fruit, at 4 lbs. for.....	88c
10,000 Pounds New Season Sweet Drawing Victory Mixed Tea Limit 25 pounds, at 3 pounds for.....	\$1	Maine Corn Finest Maine Sweet Sugar Corn grown and packed; No. 2 cans, limit one dozen, at can.....	16 1/2c	Creamy Crushed Corn 2,000 Cases Gimbel's Purity Pack Creamery Sweet Corn, None Sold to Dealers. Limit 2 cases, at can.....	11c

Sale of Nationally-Known Toilet Goods

Thursday morning will bring a very interesting sale of Toilet Preparations, Home Remedies and Articles for the Toilet Table. The three-store purchasing power of Gimbels; the work of our own laboratory in putting up pharmaceutical-preparations after official formulae, and a determination to make the Store thoroughly helpful—all go to make this sale important.

Large Added Selling Space—Grand Aisle and in the Subway Store

—with order desks, where one can comfortably select items from the entire sale. It is quite the time to anticipate summer's needs and buy them at a saving.

Prices quoted include the war tax.

Mail and Phone Orders Given Prompt Attention

A Sale of Dainty Ivory-Grain "Imperial" (Celluloid) Toiletware at Half Price and Less

Thousands of pieces such as Mirrors, Hair Brushes, Combs, Puff Boxes, Hair Receivers, Trays, Manicure Pieces, etc. In the lot are both the plain and fancy patterns.

Prices start at 25c for the Manicure Pieces and up to \$5 for large Mirrors. 3-piece "Tuscalor" black edge Toilet Sets, consisting of comb, brush and mirror, at \$10.95.



Engraving Offer

During this sale, with each purchase of Ivory amounting to \$2.50, we will engrave your monogram FREE.



Toilet Paper and Moth Preparations Sold in the Subway Store

Waldorf Toilet Paper, made by Scott Paper Co., 12 Rolls for \$1.10; 1 Case, 100 Rolls, for \$8.75.
Arch Toilet Paper, 7 oz. Roll, 12 Rolls for 75c; 1 Case, 100 Rolls, for \$5.85.
Westover Toilet Paper, 4-oz. Roll, 12 Rolls for 50c; 1 Case, 100 Rolls, for \$3.95.
High Grade Toilet Paper, 4-oz. Roll, 12 Rolls for 38c.
Naphthaline Tar Flakes, 15c lb. or 3 lbs. for 40c.
Naphthaline Compound Cedar or Lavender, 25c Pkg.
Manahan Ulster size Tarine Garment Bags, 30x5x60 inches, at \$1.20.
Manahan Tarine Sheets, 12 Sheets in a Roll, save 25% at 75c Roll.

Face Powders Rouges

Tetlow's Pussywillow Face Powder, 40c.
Tetlow's Swansdown Face Powder, 18c.
Tetlow's Gossamer Face Powder at 21c.
Java Rice Face Powder, 37c.
A small lot of Face Powders, some boxes show handling, at 1/2 to 3/4 off their regular prices.
Gimbels Compact Rouge, 26c.
Gimbels Liquid Rouge, 26c.
El Perfecto Veda Rouge, 40c.

Shaving Preparations

Daggett & Ramsdell Shaving Sticks, 23c.
Daggett & Ramsdell Shaving Cream, 25c.
Molle Shaving Cream, 19c tube.
Molle Shaving Cream, 45c tube.
Gimbels Pencils, 5c each, 3 for 10c.
Shaving Brushes, 50c.

Toilet Soaps

Resinol Toilet Soap, 20c cake.
Woodbury's Facial Soap, 20c cake.
Cuticura Soap, 20c a cake.
Pear's Unscented Soap, 12c a cake.
Gimbels Violet Bath Tablets, \$1.35 a dozen.
Gimbels Glycerine Soap, violet or rose odor, 75c dozen.
Kirk's Omnibus Toilet Soap, large size cakes, \$1.50 a doz.; cake, 12 1/2c.
Kirk's Oval or Square Line Toilet Soap, large cakes, 10c; \$1 dozen.
Goodwins Foot Soap, Foot Powder and Corn Cure, special at 19c.

Miscellaneous Articles

Gillette Razor Blades, dozen, at 80c.
Temple Incense and Burner, complete, at 80c.
Sunset Dye, at 15c pkg. or 3 for 40c.
Twink Dye, a cold water dye, at 3 for 25c.
Tintex, a cold water dye, 10c or 3 for 25c; large size, at 20c.
Bath Salts, large size bag, at 10c.

Hair Preparations

Glover's Mange Remedy, 58c.
Danderine, at 78c.
Beshore's Hair Tonic, 68c.
Gimbels Quinine Hair Tonic, 47c and 89c.
Gimbels Liquid Green Soap Shampoo, 42c.
Gimbels Bandoline, 26c.
Hay's Hair Health, 37c and 78c.
Canute Water, for gray hair, \$1.
Amani Henna Shampoo, 12c a pkg.; box of 7 for 90c.
Splendex Hair Tonic, 84c.
Gimbels Brilliantine, 26c.
Mulsified Coconut Oil Shampoo, at 40c.

Rubber Goods and Hospital Supplies

Save at Least Half
Guaranteed Face or Infants' Hot Water Bottles, at 38c.
Guaranteed, red rubber Hot Water Bottles, extra quality, at \$1.15.
Guaranteed red rubber Hot Water Bottles, at 65c and 85c.
Rubber Sponges, can be boiled in hot water, at 12 1/2c—18c—25c—38c and 50c.
Household Rubber Gloves, at 38c pair.
Crutch Tips, at 3 for 5c.

Dental Preparations

Febeco Tooth Paste, 37c.
Fornham's Tooth Paste, 42c.
Albodon Tooth Paste, 19c.
Kolynox Tooth Paste, 22c.
Kal Pheno Tooth Paste, 21c.
Kal Pheno Tooth Powder, 21c.
Pyorrhoidic, for receding gums, 78c.
Lyon's Tooth Powder, 21c.
Lavoris, for the mouth, 42c and 84c.
Pepsodent Tooth Paste, 42c.

Castile Soaps

One dozen cakes Olive Castile Soap and one dozen Wash Cloths, the two for \$1.50.
Floating Castile Soap, large bar, 55c.
Pure Olive Oil Castile Soap, 4-lb. bar, \$2.
Gimbels tin-foil-wrapped Castile Soap, 25c cake, or 6 for \$1.25.
Shah of Persia Castile Soap, 12c a cake; \$1.25 dozen.
Floating Castile Soap, 1 1/2-lb. bar, 35c.
India Coconut Oil Soap, excellent for shampooing, at lb., 28c.

Manicure Preparations

Manicure Scissors, good grade steel, at 75c.
Wood Sticks at 20c doz.
Long Emery Boards, 10c doz.
Emery Boards, 5c doz.
Glazo Nail Polish, 42c.
Gimbels Nail Bleach, 20c bottle.
Gimbels Perfumed Powdered Pumice, 15c.
Cutex for manicuring, at 30c and 55c.
Cutex Nail White, 30c.
Cutex Nail Polish, 30c.
Nail Files, at 10c and 15c.

Household Drugs and Medicines

Gimbels Violet Ammonia, pints, 16c; quarts, 32c.
Gimbels Household Ammonia, pints, 15c; quarts, 30c.
Gimbels Aromatic Spirits of Ammonia, 3-oz. size, 25c; 8-oz. size, 55c.
Gimbels Imported Bay Rum, 7-oz. size, 65c; 14-oz. size, \$1.10; 32-oz. size, \$1.85.
Gimbels Boracic Acid, lb. pkg., 28c.
Gimbels Powdered Borax, lb. pkg., 15c.
Gimbels Bicarbonate of Soda, lb. pkg., 10c.
Gimbels Glycerine, Rose Water and Benzoin Lotion, 8-oz., 20c; 16-oz., 40c.
Gimbels Glycerine and Rose Water, 3-oz., 15c; 8-oz., 40c.
Gimbels Camphorated Oil, 3-oz., 35c.
Gimbels Rose Water, 4-oz., 20c; 8-oz., 35c.
Gimbels Seidlitz Powders, 12 in box, 29c.
Gimbels Sulphur, lb. pkg., 15c.
Gimbels Witch Hazel, triple distilled, pints, 37c; quarts, 68c.
Gimbels Violet Witch Hazel, half pints, 26c; pints, 47c.
Gimbels Sodium Phosphate, lb. pkg., 15c.
Gimbels Essence Peppermint, 2-oz. bottle, 25c; 4-oz. bottle, 45c.
Gimbels Chalk and Oris, half-pound pkg., 15c.
Glyco Thymoline, at 26c, 52c and 94c.
Dioxigen, large size, 54c.
Listerine, 14-oz. bottle, 78c.
Peroxide of Hydrogen, 1-lb. bottle, 17c.
Gimbels Castor Oil, 3-oz., 20c; 8-oz., 45c.
Gimbels Spirits of Camphor, 3-oz., 45c; 8-oz., \$1.10.
Gimbels Tincture of Benzoin, 4-oz., 40c; 2-oz., 25c.
Gimbels Epsom Salts, lb. pkg., 10c.
Gimbels Alum, lb. pkg., 25c.
Gimbels Glycerine, 3-oz. bottle, 20c; 8-oz., 50c.
Gimbels Lime Water, pints, 12c; gallons, 75c.
Sloan's Liniment, 45c and 90c.
Gimbels Milk of Magnesia, 25c a bottle.
Gimbels White Pine and Tar, 16c a bottle.
Gimbels White Pine, 16c bottle.
Gimbels White Pine Combined With Cod Liver Oil and Menthol, 25c and 45c.
Horlick's Malted Milk, 40c, 80c and \$3.10.
Gimbels Fig Syrup, a gentle laxative, 30c.
Jad Salts, at 78c.
Menthol Inhaler, 7c.
Freezone, at 32c.
Nuxated Iron, 78c.
Rochelle Foot Tablets, 7c and 15c.

Gimbel Hard-Water Soap at 95c a Dozen Cakes

We sold half a million cakes of that very superior soap in the special or Annual Sale—and under normal conditions no repetition of the saving would come till next Spring—but the high costs of soap making are leading to the marketing of goods you shouldn't have. And we will let out some of this good soap at the low price of 95c a dozen.

It isn't wrapped individually, but otherwise is our regular \$1.50 soap. Biggest cake on the market—and unsurpassed for toilet and bath. Fine for baby's bath, too.

—Gimbels, Grand Aisle and Toilet Goods Section

Housecleaning Helps

Chamois, at 25c, 50c, 75c, \$1. up to \$2.
Household Rubber Gloves, 35c a pair.
Household Rubber Gloves, extra heavy, at 75c.
Shepard's Fly Killer, for bugs, roaches, moths, etc., at 25c bottle.
Puritox, for moths, one ounce in box, has a pleasant odor, also purifies the air, at 10c.
Dethol, for moths and all insects, pt. size, 45c; qt. size, 90c.

Cold Creams and Toilet Preparations

Daggett & Ramsdell Cold Cream, at 37c.
Pond's Vanishing or Cold Cream, at 20c and 40c.
Hinds' Honey and Almond Cream, 37c.
Gimbels Theatrical Cream, 1/2-lb. tins, 37c.
Gimbels Theatrical Cream, 1 lb. tins, 63c.
De Meridor at 20c and 40c.
Dr. Charles Flesh Food, at 38c.
Gimbels Cucumber Cream, 15c.
Gimbels Witch Hazel Cream, at 15c.
Lash-brow-in for promoting the growth and beauty of the brow and lashes, at 40c.

Egg Preserver, otherwise known as Liquid Glass, at pts., 18c; qts., 35c.

Absorbent Cotton, 1-lb. roll, at 38c. This cotton was used by the Red Cross during the war.

Pills and Tablets

Blaud's Iron Pills, 5-grain, 100 in bottle, 17c.
Cascara Sagrada Tablets, 100 in a bottle, 3-grain, 21c; 5-grain, 25c.
Aloin, Belladonna, Strychnine and Cascara Tablets, 100 in a bottle, 25c.
Lady Webster Pills, 100 in a bottle, 25c.
Cathartic Compound Tablets, 100 in a bottle, 40c.
Zymole Troques, 18c.
Charcoal Tablets, 7c, 18c & 35c.
Soda Mint and Pepsin, 50 in a bottle, 10c.

Aspirin Tablets, 100 For 25c 5-grain, special for this sale; made by one of the country's best known manufacturing chemists. U. S. F. grade.

Brushes of Every Description

Savings on these brushes will easily average one-half and in some cases more.
A lot of excellent Hair Brushes, aluminum face, at 75c.
Tooth Brushes, imported kinds, at 10c, 6 for 50c; 12 1/2c, 6 for 65c; 15c, 6 for 80c; 18c, 6 for 90c; 25c, 6 for \$1.25; 35c, 6 for \$1.85.
Nail Brushes, at 10c, 15c, 18c and 25c. These are all marked much under value.
Bath Brushes, detachable handle, at \$1.
Cloth Brushes, at 50c, 75c and \$1.
A special lot of Cloth Brushes at 25c.

Hughes' Ideal Hair Brush, No. 66 at \$1.75.
Hair Brushes, at 25c, 50c, 75c, \$1 and \$1.50.

Deodorants

Hush, at 19c.
Mum, at 20c.
Odorsweet, at 19c.
Odorono, at 25c, 45c and 90c.
Amolin, at 20c and 40c.

Talcum Powder

Palmolive Talcum Powder, at 12 1/2c a can.
Mavis Talcum Powder, 19c.
William's Talcum Powder, asst. odors, 16c can.
Talcum Powder, violet odor, lb. cans, 11c.
Talcotelette Talcum Powder, 20c and 32c.
Waliz Dream Talcum Powder, 20c.
Johnson & Johnson Red Cross Baby Talcum, at 16c.

Gimbels Exquisite Talcum Powder, a hot weather necessity; lb. can at 19c. Violet or Corylopsis odor. About half price.

—Gimbels, Toilet Goods Section, Grand Aisle, also Subway Store.