

TREBLE CLEF CONCERT

Chorus of Female Voices Presents Interesting Program at the Aldine The Treble Clef, one of Philadelphia's best-known female choruses, under the leadership of Karl Schneider, gave the spring concert of its thirty-sixth season in the ballroom of the Aldine Hotel last evening before an audience that filled the room.

The concert was one of the best that the club has given for a long time. Mr. Schneider used excellent judgment in the selection of his program, taking into consideration, as a conductor should, but as all of them do not, the vocal assets at his disposal, as well as arranging the numbers with regard to contrast and popular interest. Therefore his program was well balanced, interesting and well rendered. The chorus consists of between fifty and sixty voices, which had been carefully trained and sang together with fine precision.

One of the features of the concert was a three-part song with accompaniment, "God's Miracle of May," by Miss Frances McCollin, of this city, who is attaining a considerable reputation as a composer. The composition is lyric in style and only moderate in vocal requirements both as to range and harmonization. Another interesting number was the set of six Slavic folk-songs by Josef Shutz which were diverse in character and admirably performed, although they are not all easy. The other choral numbers were "A Ballad," by Fox; "The Sea Fell in Love With the Moon," by Haesche, and Dunn's "Music of Spring," all of which were well sung.

There were several soloists, Miss Anna Krakoff, who sang songs by Metcalf, Forsyth and Gene Branscomb, and Mrs. Caroline Green, who appeared in works by Tipton and Ward Stephens. The Misses Dorothy and Helen Warhurst sang the duet from "Norma." All gave highly creditable performances, and were deservedly encored. Ellis Clark Hamman showed his invariable taste and skill in the accompaniments both solo and choral, and was assisted in the Shuk numbers by Miss Frances Fisher.

Fellowship Conference

The Philadelphia branch of the Dickens Fellowship will hold its second annual conference in the Musical Art Club at 8:15 o'clock this evening.

fiction FICTION Everybody's Magazine MAY

SHOW PERSHING'S MEDALS

Decorations Received by General in Europe Placed on View

General Pershing's foreign decorations were placed on exhibition today by the Bailey, Banks & Biddle Co., and will be on view until May 12.

No American ever received so many foreign decorations of the first class as General Pershing, and this is said to be the first time so many Grand Crosses have been placed on exhibition in this country.

The decorations include the British Order of the Bath; the French Legion of Honor and Croix de Guerre; the Belgian Order of Leopold and Croix de Guerre; the Order of St. Maurice and the Military Order of Savoy; the House of Savoy; the Rumanian Order of Michel the Brave; the Order of Prince Danilo I. of Montenegro; the Star of Karageorge, of Serbia; the Royal Order of the Redeemer, of Greece; and the Japanese Order of the Rising Sun.

DISTINCTIVE LIGHTING FIXTURES

Save Money On Your Fixtures

Compare Our Prices and Quality With Any Others

Special Rates on Fixtures for the Whole House! Gas and Electric Table and Floor Lamps

ADOLPH SADKER 50 N. 8th St. Walnut 4132

Hotel Lorraine

W. B. KUGLER, Manager Broad at Fairmount Ave.

Table d'Hote Luncheon 75c DAILY

Table d'Hote Dinner \$1.00 DAILY

Sunday Dinner \$1.50

For Sunday's Menu see Saturday's Evening Ledger

RESTAURANT DEPT. THOS. HICKEY, Manager

FRANK HICKEY, formerly of KUGLER'S RESTAURANT

Banquet Rooms

Banquet Department LEON ANDRE GORDEL, Manager

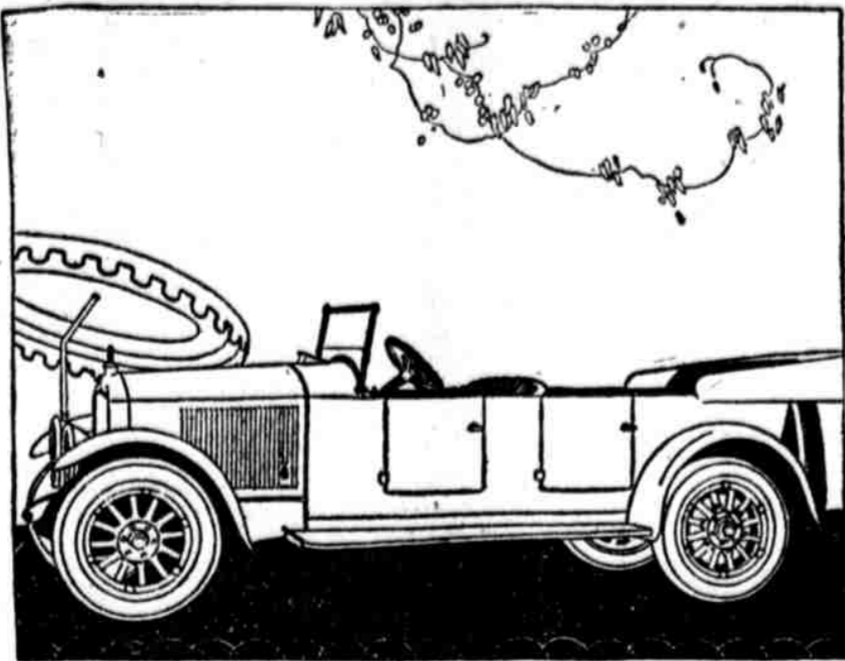
formerly of KUGLER'S RESTAURANT

Increases efficiency of a truss 50%

GREATEST RUPTURE RETAINER

\$2.00

L. B. SEELEY, 1027 Walnut St.



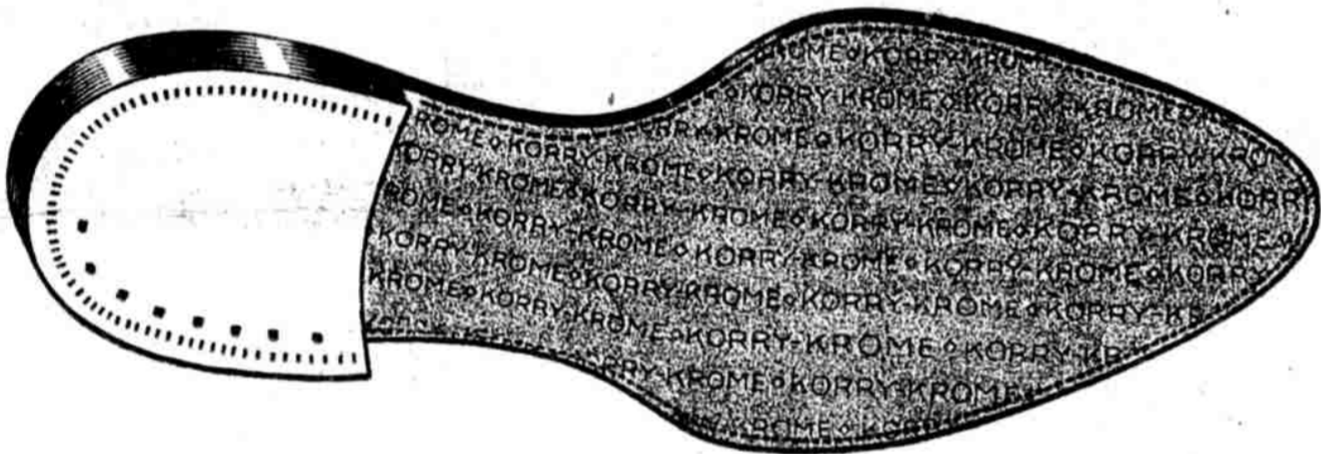
THE NATIONAL SEXTET IS BUILT IN FIVE CUSTOM BODY STYLES

The New National Sextet with its National-built, six cylinder engine is probably the most discussed fine car today. There are authorities who have stated flatly that it is at least two years in advance of the times.

NATIONAL MOTOR CAR & VEHICLE CORPORATION INDIANAPOLIS, INDIANA Twentieth Successful Year

Samuel Earley Motor Co.

675 N. Broad St. Bell Phone: Poplar 1991



Save Your Shoes

When you have your shoes re-soled—and everyone does these days—you can have a kind of leather put on that will give you double wear. Thus you cut in half the expense of shoe repairing.

Strenuous tests, both in the army and out, have proved that Korry Soles will last twice as long as any other soles. They are real leather, tanned by a secret process, which makes them extra flexible and congenial to the foot. They are waterproof—absolutely and permanently waterproof—and they won't slip in the wet.

Korry-Krome GENUINE LEATHER SOLES

Most good repair men already have Korry Soles in their shops, or can get them for you in short order. And in buying your next pair of new shoes it is well to ask the clerk if he has shoes with Korry Soles. They are as good for dress shoes as they are for work shoes. You will be surprised the way they last on a romping, scuffling child.

Korry Soles are tanned by the J. W. & A. P. Howard Company, of Corry, Pennsylvania. They are used by reliable shoe repair men. If yours does not have them, notify our local branch and we will see that you are supplied.

J. W. & A. P. HOWARD COMPANY

3rd and Vine Streets, Philadelphia

Telephone, Market 1721

WANAMAKER'S

WANAMAKER'S

Wanamaker's Down Stairs Store

It Is Good to Know

—that the Down Stairs Store at Wanamaker's is a store not only of lower prices but of dependable merchandise. A low price in itself means nothing. It is what you get for what you pay that really counts.

Marabou Scarfs Special at \$5.75

They are in three pretty cape shapes and may be had in seal or natural brown, nicely lined with silk and finished with silk ribbon ends to fasten them.

A great many women want them to wear with dresses when coats are laid aside—they give the needed warmth over the shoulders.

(Central)

Good School Shoes for Small Boys, \$3.50

They're of sturdy, durable tan leather, blucher style, with round, comfortable toes that allow plenty of room for little feet to grow. Soles are thick and serviceable. Sizes 10 to 13 1/2.

(Gallery, Market)

Sheer White Voile 44 Inches Wide 65c a Yard

A soft quality is this, especially adapted to the making of children's frocks, women's blouses and even pretty curtains.

(Central)

Women's Corsets at \$2.50 and \$3

This includes good values in topless and average models for slight to medium figures. The materials are fine white and pink coutils.

(Central)

Pretty Tub Frocks for Little Girls Are \$2

Carefully made dresses are these, in pretty styles and of good materials. Mother may choose from three styles, but she'll probably want them all!

One is of plaid gingham with a bit of hand embroidery on the white collar; another has a striped skirt and a plain-color waist with a striped trimming; the third is of plain blue, maize or rose, smocked and finished with a little sash—as you'll see in the sketch.

Suits for Her Brother

Button-on wash suits of durable gingham and suitings have white waists and dark blue, tan, gray, green or lighter blue trousers. Sizes 2 to 6 years. \$3, \$3.25 and \$3.50.

(Central)



1500 Women's Ribbed White Cotton Vests 35c—Three for \$1

- Bodice or heading tops
—First and second quality
—Regular and extra sizes

And wise women will get a supply for warm weather.

(Central)

Good Serge, Tricotine and Wool Jersey Dresses in Great Variety at \$13.25 to \$23.50

Sizes for Women and Young Women

You will be amazed at the wide variety of these dresses and, though the prices are small, the dresses are good in style, workmanship and material.

You may choose a tailored, straight-line model, one with short or long sleeves or an Eton frock; even finely pleated skirts may be found among these.

Navy serge dresses, in trim styles, are \$13.25 and \$15.

Tricotine in navy blue and black is in many models at \$15, \$17.50 and \$20.

Wool jersey, in splendid variety, may be had in navy, Copenhagen or Pekin blue, tan, taupe and gray at \$15, \$20 and \$23.50.

(Market)

Savings of 1/4 to 1/2 on Women's Coats and Wraps

Creating an Opportunity of Economy That No Woman Should Miss

Styles are fashionably correct—some of the smartest of the season; materials are excellent quality and the colorings are the right ones for Spring.

At \$14—Velour, burella and jersey sports coats.

At \$19—Sports coats are of burella, jersey and silvertone. Long capes and coats are of velour.

At \$23.50—Capes and coats are of tinseltone, serge, velour and jersey.

At \$25—Silk-lined sports coats of polo cloth, goldtone and velour are all splendid values.

At \$35—Polo cloth, silvertone, velour, serge and poplin are among the materials, and the coats are in various long and short models.

At \$41—Sports coats and coats and wraps for dress wear are of silvertone, serge, polo cloth and Bolivia in lovely colorings and beautifully lined. All were marked more.

(Market)

Women's Soft Summer Nightgowns, \$1.50, \$2, \$2.50 and \$3

There are several styles, including some nightgowns which have been marked at lowered prices.

One nightgown with a square neck is trimmed with blue shirring, another is finished with a strip of fine embroidery edged with pretty lace.

All of them are dainty and the various trimmings and ways of finishing lend added interest to the selection.

Special at \$2

Nightgowns of an especially fine material have tiny dots of lavender, blue or pink and are finished with lace or bits of embroidery.

(Central)



Variations of Women's New Spring Pumps

First come the plain pumps with long, slender lines and turned soles. These can be had in patent leather or dull calfskin with high, curved heels at \$7.50; with baby French heels at \$8.90.

For street wear there are tan or black calfskin pumps with imitation wing tips, welted soles and medium heels. \$8 a pair.

Brogue pumps, which have an air of their own, are of nut brown or dull black leather made with full wing tips and low heels. \$8.90 a pair.

(Central)

House Dresses Fresh as a Spring Morning

—Unusually Good Variety at \$3.85 and \$5

Pretty gingham, percale and chambray dresses are in dozens of neat styles; white collars and cuffs giving added freshness to most of them.

Some adjustable styles—adjustable waists and hems—will be found among them.

At \$3.85

The dress that is shown on the right in the sketch, is in blue and gray. The little vest, the collar and pocket tops are of snowy ray.

At \$5

The plaid gingham dress sketched has a long organdie collar, cuffs and pocket tops edged with tiny ruffles of plaid gingham. There is particularly good choosing in the adjustable dresses at this price.

Rubberized Bib Aprons in Gingham Checks, 85c and \$1.50

Most convenient and practical are these checked aprons when wet work is going forward. They are made with tapes that go over the shoulders and tie in the back.

Also in plain white at \$1.

Blue-and-White Checked Gingham Aprons

Three styles of big, generous cover-all aprons are here—the Mother Hubbard, the princess and the bungalow which is piped with white. \$1.50.

Rig, full-cut band aprons, gathered or gored, are 85c and \$1.

(Central)

