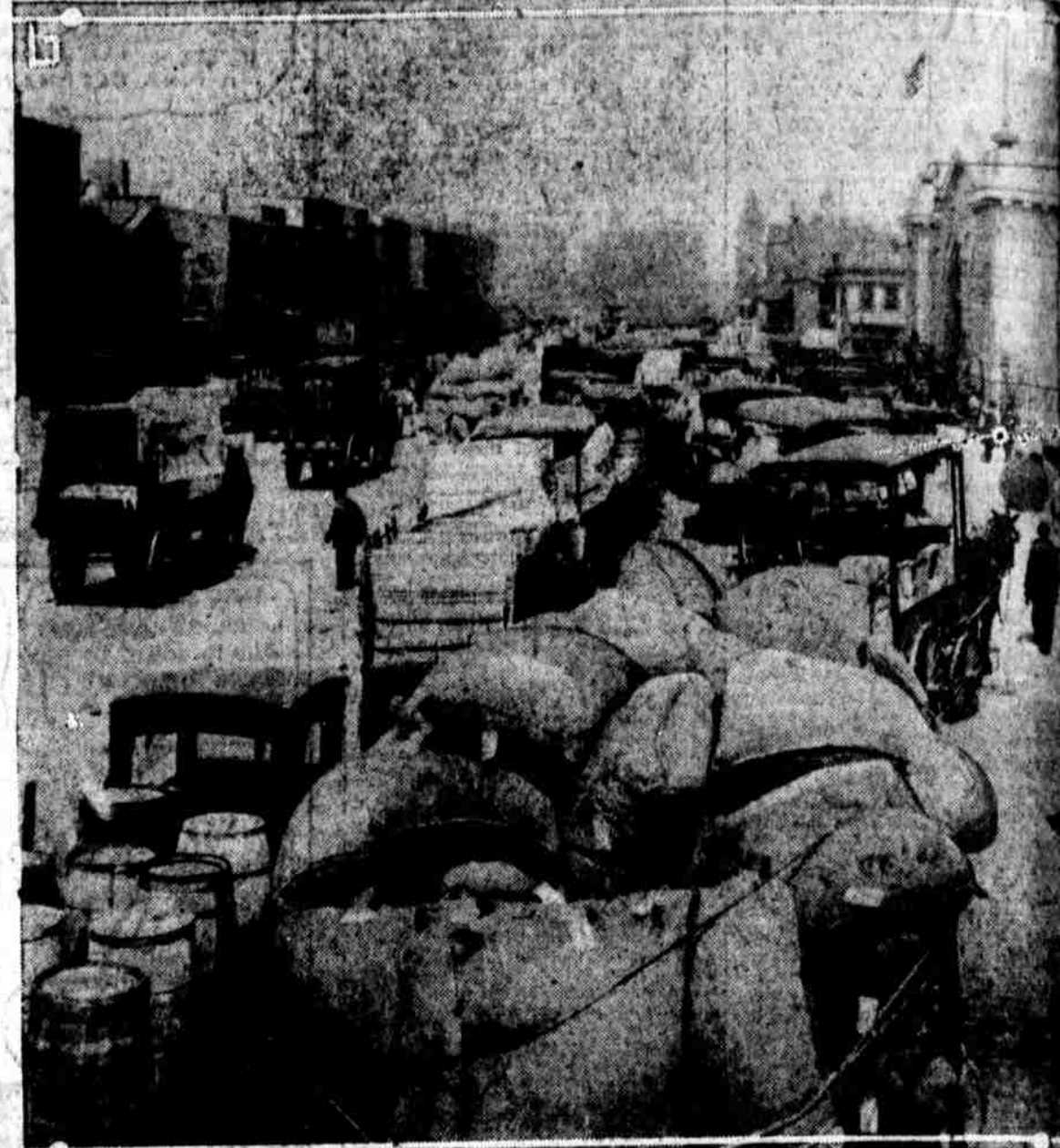


Cartoonist Briggs Goes "Fishing": Temple Co-eds in Play Tonight: World's Smallest Office



YOU'LL APPRECIATE the fishing pose when you know it is Clare Briggs, the cartoonist, whose "When a Feller Needs a Friend," "Oh Man" and other cartoons appear in the EVENING PUBLIC LEDGER. It was snapped at the Artists' Costume Ball in New York

WILL APPEAR in a French play to be given at the Bellevue-Stratford tonight by the Temple University. Both Miss C. Knight (left) and Miss G. Garrod will star in the twilight, night and dawn dance

NO REPORTS YET on how good they are biting, but the trout season opened yesterday, with many fishermen reported absent from their offices

SCORES OF WAGONS and automobile trucks were lined up on Delaware avenue for most of yesterday, awaiting their turn to go on the municipal pier, at the foot of Race street. Due to the railroad strike, emergency ships have been loaded with freight for points along the Delaware river, New York and Boston



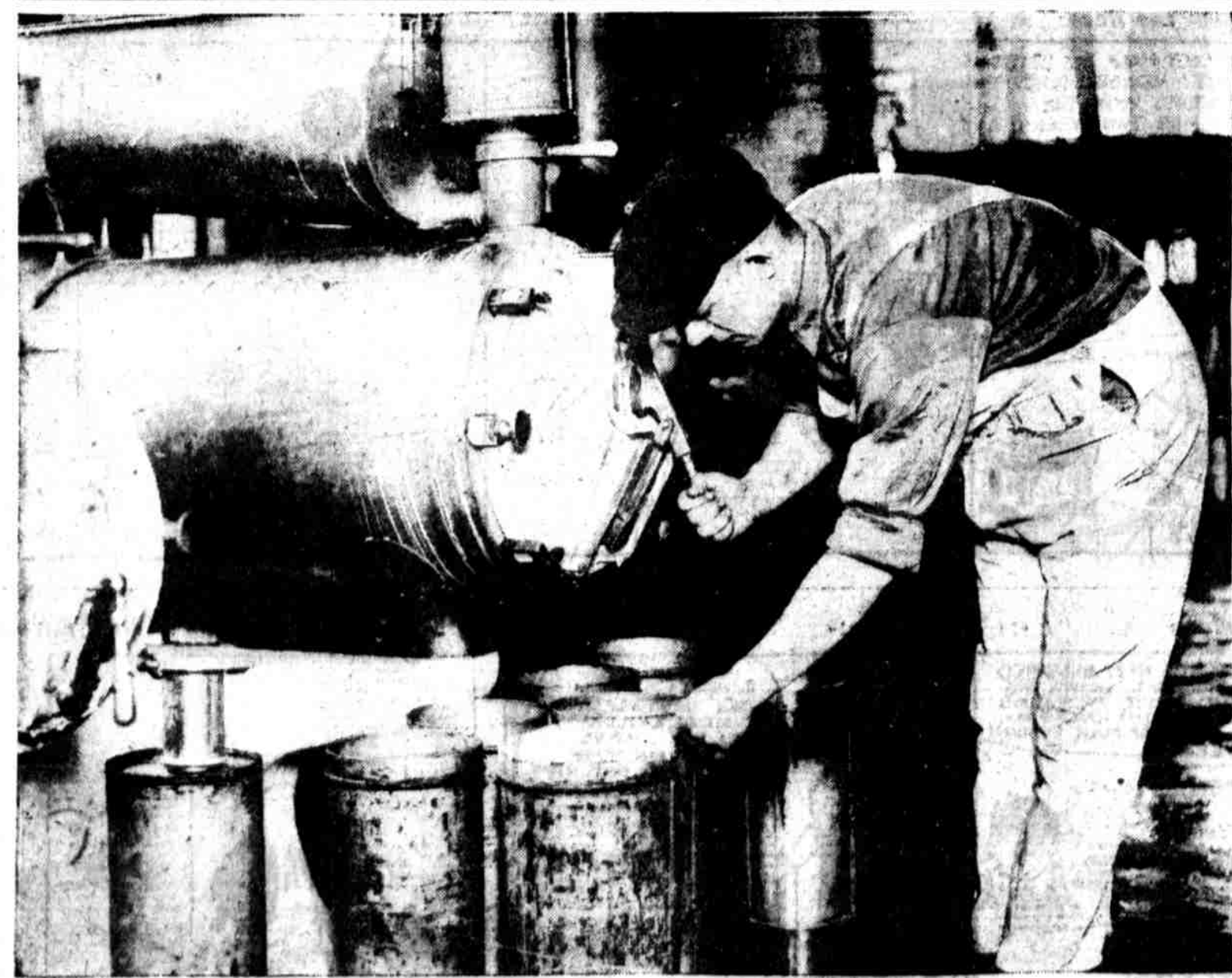
IN ACTION during the tennis matches being held on the Wanamaker roof this week. The player is A. L. Burtis, of the Idle Hour Tennis Club

CHICAGO POSTOFFICE CLERKS have equipped themselves with roller skates to speed up the handling of their parcel-post business. The new plan is successful

THE SMALLEST OFFICE in the world, and it's a busy one, too. It's a taxicab office at Broad and Locust streets. William D. Ketzmillier is in charge

REGISTRATION CAR on track No. 16, Broad Street Station, where men who are volunteering to assist during the railroad crisis are assigned work to which they are particularly adapted. Many Philadelphia firms are lending men to the Pennsylvania Railroad

OUR CITY'S WORKERS AND WHAT THEY DO



FILLING CANS WITH ICE CREAM from the 100-quart creamery freezer. The mixture is run through pipes from the mixing room to the top of the large freezer, the flavor is added and then the freezing operation takes place. It is then placed in the cans. The cans are taken to the hardening room, which has a below-zero temperature. Three batches of cream are made an hour. The operator, C. J. Holden, of Brookline, Pa., is shown at his station in the Abbotts ice-cream factory, 216 Lombard street

THE BEAUTY CORNER



MARRIED in the kaiser's private chapel at Coblenz, Germany. She is Mrs. Charles G. Mettler, wife of Major Mettler, with the United States army of occupation



PAUL ROOME DE MOTT, of Paterson, N. J., captured near Dienlaken, in the Ruhr district, and when attempting to escape was shot by German soldiery



MISS GERTRUDE A. JENKINS, 5134 Kershaw st., Philadelphia. Photographs for this feature should be submitted through the mail, addressed to the Beauty Corner, EVENING PUBLIC LEDGER



COACH WHELAN, of Harvard's track team, lines his men up in front of mirror, shown at left, when practicing. Defects are soon apparent to the man himself. The mirrors have been used to good effect