

**We fix bent fenders,
body dents, broken tops, etc.**

**Oldsmobile
Renovating
Service**

800 N. Broad St.

Nothing mars the appearance of a car like bent fenders, a dented body or a shabby top. If you knew how quickly and reasonably we repair these faults, you'd bring your car here tomorrow.

Every phase of this work is done right here in our own plant by trained experts, which enables us to effect for you a saving not possible where work has to be sub-let, as is the case with the average repair shop.

Get our estimate first.
Phone Poplar 4697

MONTGOMERY, WARD & CO.
America's Second Largest Mail-Order House
Maintains a Large Fleet of—

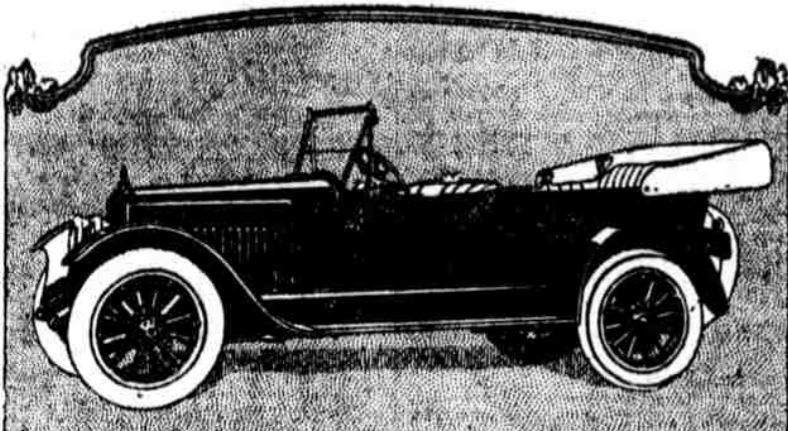
DIAMOND T
THE NATION'S FREIGHT CAR

Because They Are Dependable

FORST BROS.

Distributors
822 North Broad St.

Branches:
Norfolk, Va.
Washington, D. C.
Pittsburgh, Pa.



STANDARD EIGHT
A Powerful Car

THE Standard Eight's story is simple. The engineers who had perfected the steel construction of the world's railroad rolling stock believed that they could build an automobile of power which would be a light car and yet give full riding comfort. They went ahead and did it. The Standard Eight's powerful motor will meet the demands of any situation in road or traffic. The car's balance gives riding comfort.



**EASTERN MOTORS
CORPORATION**
655-7 N. Broad Street
Philadelphia, Pa.

**BUY
MANAHAN'S**
EST. 1860

**MOTH PROOF
GARMENT BAGS**

To Make Your Clothes
Last Another Year

Made of Strong Duplex Paper
in PINE TAR—CEDARIZED—ODORLESS

Garments are suspended from hangers and can be removed at will.

No Moths, No Dust or wrinkling of garments.
No offensive odor.

These sizes have three hooks and will hold three garments.

- Auto Coat Size 30x36
- Ulster Size 30x36
- Overcoat Size 30x36

These sizes have two hooks and will hold two garments.

- Business Suit Size 34x37
- Muff and Blanket Size 34x37

- Muff or Stole Box 17x12x7

Sold by the leading Department and Drug Stores throughout the United States.

Or we will send them direct upon receipt of price. Catalogue upon request.

FACTORY, 370 Pearl Street, New York City.



Store Hours, 9 to 5.30

The Home Garden is popular with many whose war-time experience proved that during the summer fresh vegetables can be had in abundance and but little to pay. The outdoor work brings its own dividend in health. Seeds and Garden Tools on the Fourth Floor.

Gimbel Brothers

MARKET : CHESTNUT : EIGHTH : NINTH
For Tomorrow—Thursday

Wednesday, April 14th, 1920

Continuous and loyal service is highly valued by all wide awake concerns. One mark of this appreciation at Gimbels is a Free Insurance Policy that each employe gets after one year's connection with the Store. In six years this reaches a maximum of \$1000. The employe does not pay a cent for this.

**Subway Store Sale of 517
Women's and Misses' Suits**

Suits We Picked Out As "Biggest Plums" From Twelve Manufacturers' Entire Surplus Stocks—
They Go On Sale Tomorrow Morning—

At \$22.75



Wool-Jersey Suit In semi-sports effect. Sale-Price \$22.75 Note the pocket.

Oxford Silvertone Suit With plenty of buttons. Sale-Price \$22.75 Note the button-treatment.

Braid-Trimmed Serge Suit Sale-Price \$22.75 Note the "ripple"—the blousing and the fascinating little belt.

Wool-Jersey Suit In regulation sports style. Sale-Price \$22.75

And Savings Run up to \$17.

Fifteen Styles—mostly sports effects, but both the regulation sports models and the new dressier sports models—with saddle-bag pockets that button on to the belts—and pockets that are part of a "gore"—and big, flat, interesting patch-pockets that button up in the smartest possible way.

And plenty of good blue Serges—

With the cutest ripple-sides.

Or with smart black silk braids.

Or buttons and buttons and buttons.

Besides Jerseys and Serges, There Are Silvertones, Goldtones and Poplins

Navy blue—fully three hundred here in navy blue or Peking blue! And black—and the partridge and taupe and beaver and brown shades. And heathers—especially the green-mixed-with-gold—like midsummer fields! And wonderful oxfords.

Misses' Sizes 14 to 18; Women's 36 to 44; with the Extra Sizes—46 up to 53.

—Gimbels, Subway Store

**And 425 Dresses—Mostly Jerseys
At \$10**

And Mostly Half-Price—Subway Store

"Plums" from our two biggest supplying dress manufacturers—

Besides jerseys, there are serges, and silk-poplins, and tricotines, and a few taffetas, and even some satins, and here and there a crepe de Chine.

The jerseys in tans, reindeers, Peking blue and taupes.

The rest mostly in navy blue.

Misses' sizes 14 to 18; women's sizes 36 to 44—

in a few styles, the sizes run clear up to 52!



Wool-Jersey Dress Sale-Price \$10 Note the "twisk" broom pockets.

Silk-Poplin Dress Sale-Price \$10 With short sleeves and a clever little smartly tucked bodice.

Serge Dress Sale-Price \$10 With the button and the smartly tucked bodice.

—Gimbels, Subway Store

**And 500 New-Length Coats—With All Sorts
of Odd Pretty Little Touches**

At \$16.75 Subway Store

Though We Paid More Than That For Their Duplicates Just Before Easter!

And will you just note the stunning buttons? How they do match and "echo" the materials! Every kind of pockets—patch or inset; regulation sizes up to enormous affairs with endless buttons! And some of the smartest have leatherette insets.

Materials
Jerseys
Silvertones
Velours

Goldtones
Tweeds
Mixtures
Serges

Colors

Peking blue—rich, lovely shades.
Navy blue—true blue!
Tan—the new tan.
Taupe—several shades.
Brown. And black. Heather ton.

And those smart brown-and-white and black-and-white tweeds that have the lovely fleck of red and brown and black half-hidden in the mixed effect. Sizes 14 to 18. Women's, 36 to 44. A few styles run up to size 52.
—Gimbels, Subway Store



Velour Coat, Sale-Price \$16.75 With enormous pocket, etc. and buttons by the dozen.

Sports-Length Tweed Coat, Sale-Price \$16.75 With brown leatherette cuffs and trimmings.

Silvertone Coat, Sale-Price \$16.75 With buttons—to carry out the color.

**550 Girls' Coats
at \$8.90**

Average Half-Price—Subway Store

Sports styles—Empire styles—tucked-pocket models—fancy coats.

Wool-poplins and silk-poplins, serges. And chevots—the kind that have the herringbone weave. Even the fashionable polo-cloth.

Colors: Peking blue, tan, reindeer, navy blue, brown and heather mixtures. 6- to 16-year sizes.

—Gimbels, Subway Store



At \$8.90