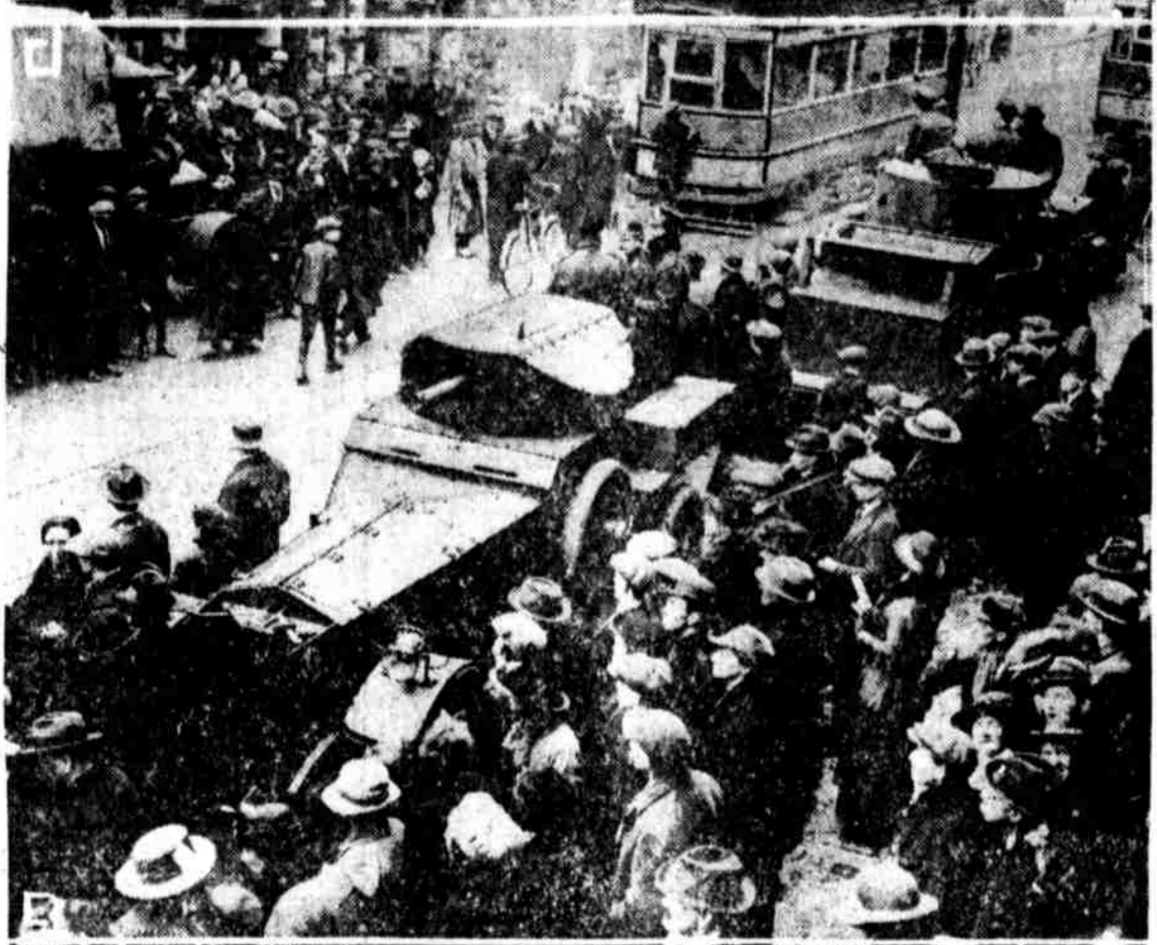


Tanks in Dublin Streets : Four Horses Over the Hedge : Washington Honored in Paris



MRS. LEONARD WOOD, wife of General Wood, who declares she is ready to give battle in the interest of her husband's presidential fight.



TANKS AND ARMORED CARS in Aungier street, Dublin, doing guard duty during a raid, where rifles, grenades and much ammunition were confiscated. A large number of arrests were made.



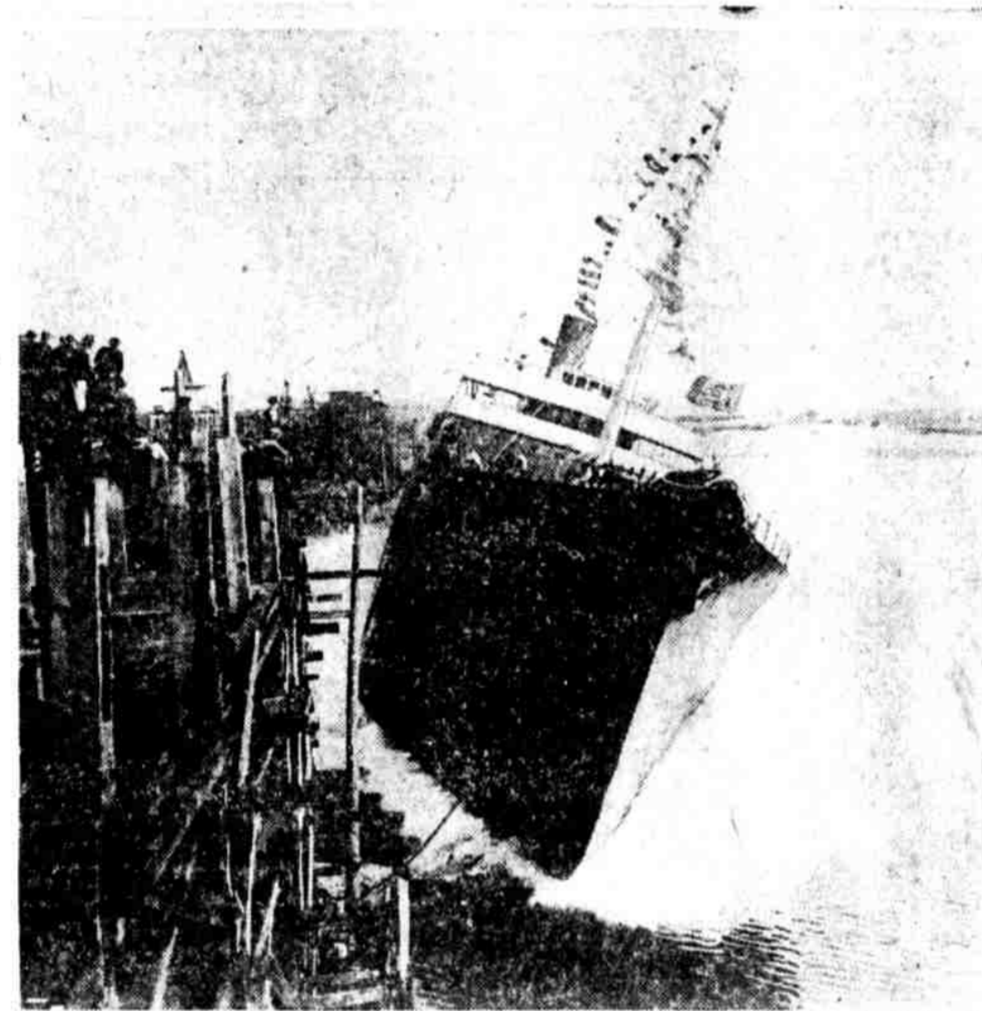
OVER THE HEDGE in fine order in the Weybridge Handicap at the Hurst Park Steeplechase near London. Not much difference in the position of the four horses.



LADY BYNG, wife of General Sir Julian Byng, Baron of Vimy, who is being mentioned as the next governor general of Canada.



MRS. ELLIOTT SCHUYLER PHILLIPS as an Indian girl in "Musical Milestone," given in New York by the Junior League Club.



SIDE LAUNCHING OF THE STEEL STEAMER "CITY OF VERNON," 10,000 tons, at Pensacola, Fla. The ship went into water completed and ready for use.



AMERICAN SOLDIERS AND SAILORS pay tribute to George Washington in Paris on February 22. They placed many flowers on his monument, as did many French people.



MISS WINIFRED CURRY, who will appear as Claudia Procula in "Pilate's Daughter," at the Metropolitan Opera House, on March 12.

OUR CITY'S WORKERS AND WHAT THEY DO

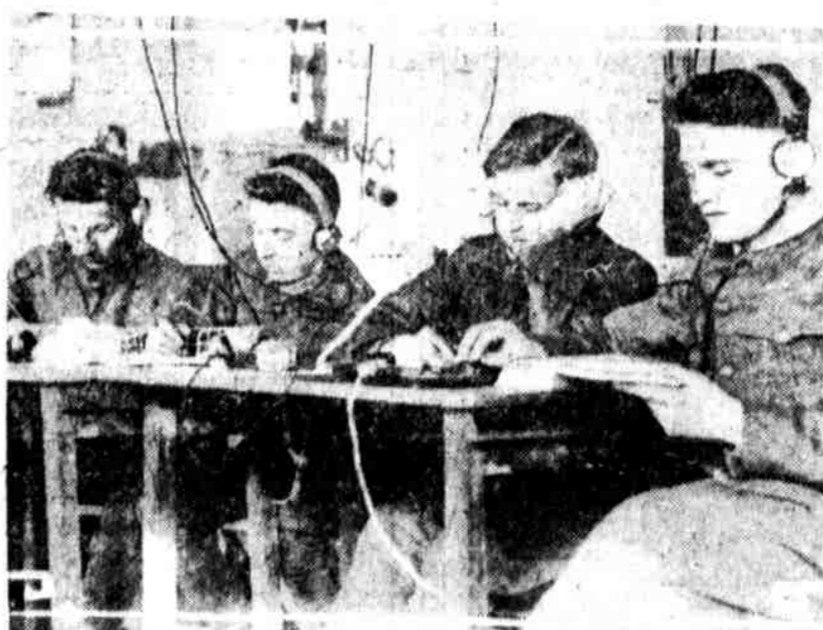


FINAL INSPECTION OF THE STEEL BALLS, manufactured by the Atlas Ball Co. at their factory, Fourth street and Glenwood avenue. Miss Rosetta Parker, 2332 North Van Pelt street, is seeing that the finished steel balls have no surface defects.

THE BEAUTY CORNER



COLONEL THOMAS A. LAWRENCE, left, the uncrowned king of Arabia, who was largely responsible for Emir Feisal becoming king of Syria. Right, Lowell Thomas, American war correspondent, attached to Emir Feisal's staff during war.



THE SOLDIERS AT CAMP DIX are allowed to study wireless telegraphy. The vocational school there offers the privilege.



MISS ANNA TYMAN, 1546 N. 8th street, Philadelphia. Photographs for this feature should be submitted through the mail, addressed to the Beauty Corner, EVENING PUBLIC LEDGER.