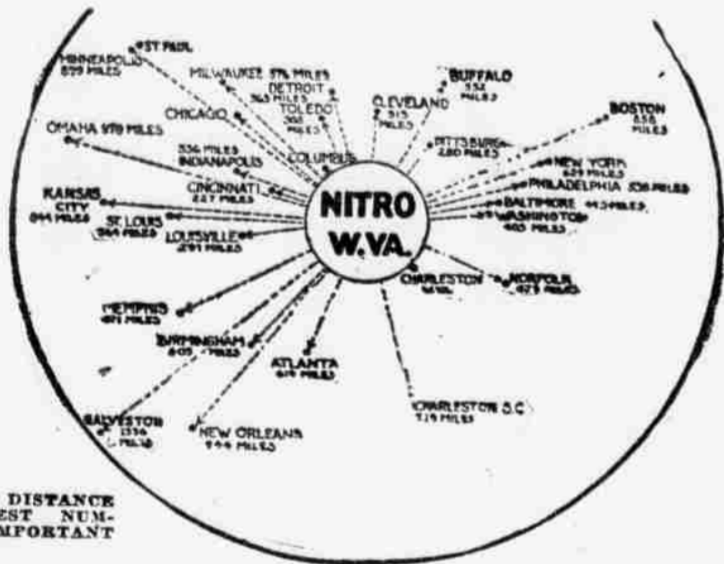
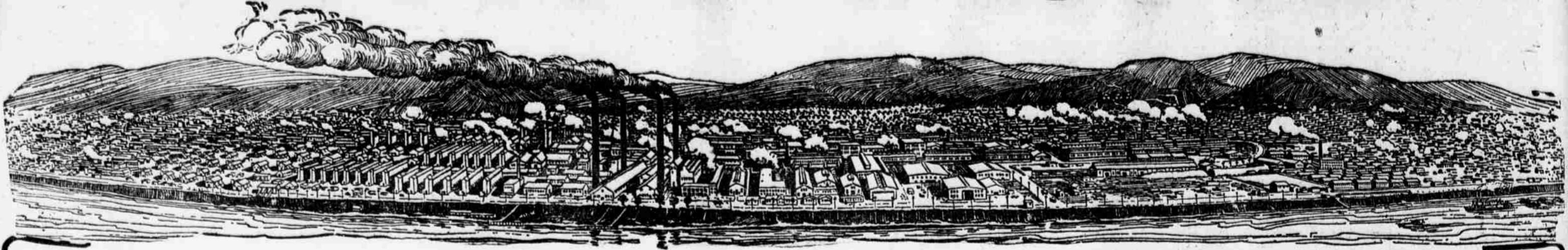


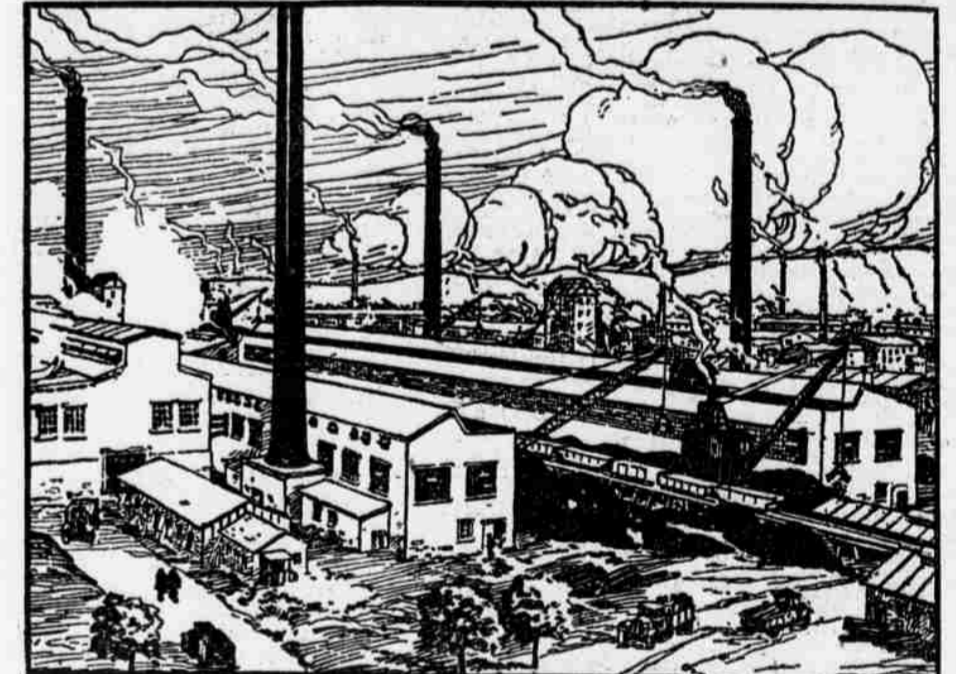
NITRO, West Va.



SHORTEST DISTANCE TO LARGEST NUMBER OF IMPORTANT CITIES.

IDEAL FACTORY LOCATION

Above is a panoramic view of the unique Government-built Industrial city situated in the very centre of the big-city circle of the East.



THE NITRO POWER PLANT, 25,000 BOILER H. P. CAPACITY



RECEIVING YARDS, 14 TRACKS, WITH 400 CARS CAPACITY



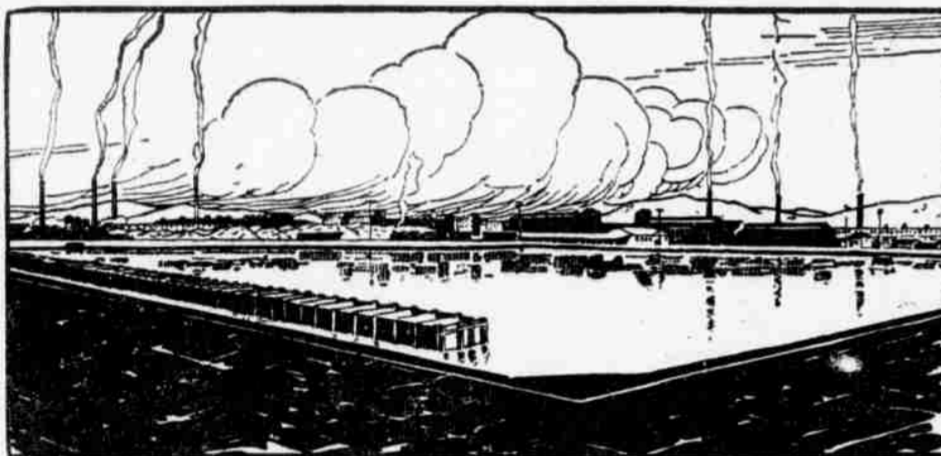
THIRTY-EIGHTH ST. AND FIRST AVE. SHOWING TYPICAL WORKMEN'S COTTAGES



ONE OF THE FACTORIES



SEVENTH ST. AND WEST VIRGINIA AVE. SHOWING TYPE OF EXECUTIVE RESIDENCES



100,000,000 GAL. SEDIMENTATION BASIN FOR FILTERED WATER SUPPLY

To Manufacturers:

HERE is a great Industrial City—Nitro, West Virginia—not a city which “just grew,” but a city scientifically planned in advance and completely built by the United States Government.

From the selection of the site down to the complete furnishing, lighting and heating of the smallest cottage, this City was built to include the largest number of industrial advantages.

Nitro is a great Industrial Centre by purpose—not by luck.

That is why the manufacturing advantages of Nitro stand out in strong contrast when compared with the advantages of other cities. There is no industrial development anywhere in the United States comparable to Nitro. This statement is made over the signature of our corporation.

That is why you must investigate Nitro if you are seeking a branch factory site—if you are moving your present factory—or if you wish to start in business in the finest manufacturing locality the country offers.

No other Industrial Center offers so many advantages:

Location

The site for Nitro was selected by the Government at a point which represents the shortest distance to the largest number of important cities and supply centres. Nitro lies in the heart of the West Virginia coal mining district, producing the finest steam and coking coal in the United States and a great abundance of natural gas. Nitro is 16 miles from Charleston, West Virginia.

Manufacturing Buildings

There are 729 manufacturing buildings of all descriptions and of the most modern construction. These buildings are nearly all completed and ready for immediate occupancy. Many are fully equipped, piped and wired and provided with railroad sidings. This entire industrial area is tied together by 18 miles of permanent broad gauge and 25 miles of narrow gauge railroads equipped with steam and storage battery locomotives and flat cars.

Power

The rate for power is so low that local coal mines use it instead of producing their own power with their own coal at the mouth of the mine. The two boiler houses in power plant have a capacity of 35,462 Boiler Horse Power.

Improvements

The city, 1,800 acres in area, contains 3,400 completed buildings, including manufacturing plants, homes, hotels, theatre, school, churches, hospital, stores, offices and recreation centres to accommodate a population of 35,000.

There are 20 miles of streets and 25 miles of sidewalks. Bell telephone system, splendid sanitary sewer system with 49 miles of pipe (adequate for a city the size of Baltimore), filtered water supply of large capacity and 32 miles of gas lines. Still further improvements are now in process of development.

Fire and Police

3 fire houses with modern motorized equipment, including Triple Combination Pumper, chemical trucks and extension ladders. Fully organized department, high pressure water system and complete Gamewell Fire Alarm System. Insurance rate in Nitro is extremely low.

Police station and jail with completely organized 3-platoon system for general police work, plant and property guardianship and river patrol. Nitro is also the home of the State Constabulary of West Virginia.

Housing Conditions

There are ample housing facilities in Nitro to accommodate all of the labor required to work all of the plants now standing. There are one and two family houses of four, five or six rooms, with bathroom and toilet, heat, electric light and filtered water. Also hotel, boarding houses, barracks, mess hall, bachelor quarters, women's dormitories, and residences for Executives.

Transportation Facilities

Transportation costs are reduced to a minimum because of Nitro's strategic location. The Kanawha & Michigan railroad runs through the centre of the city, with sidings to plants. The receiving yard has 14 tracks with a 400-car capacity, and the delivery yards have 6 tracks with a 180-car capacity. The Kanawha River provides an excellent inland waterway to the Mississippi as far as New Orleans.

Water and Fuel

Waterworks with a 57,600,000 gallon pumping capacity; with 61 miles of cast iron pipe, 10 miles of wood stave pipe, and 3 hill tanks, providing ample supply of pure filtered water for household use at a rate approximately 20% of the average rate in the United States

and at approximately 50% for manufacturing purposes. Natural gas is supplied as fuel at a cost equivalent to 10c. per thousand cu. ft. for artificial gas, and is circulated through 32 miles of gas lines.

Climate

The mild, cool climate all the year round is most favorable to health and industrial activity. There are no extremes of temperature to interfere with outdoor work or to impede transportation. A minimum of clothing, fuel and medical attention is required, and garden produce thrives within and about the city limits.

Wages

The wage scale varies with the cost of living. Nitro living costs are low. Governmental rentals, for instance, are generally conceded to be the lowest obtainable, but rentals in Nitro average 10% lower than even the Government rentals for houses in this district. These low rents and the extremely low cost of fuel, water, electric light—the small investments required for clothing—the abundance of garden produce and natural resources in this region—all are factors which reduce the cost of living and the necessary scale of wages.

There is undoubtedly a plant ready for you here in Nitro, West Virginia.

For your convenience, we will mail to you a brief Questionnaire to obtain the full particulars of your manufacturing requirements, and—

Experts will then report to you promptly about the plant in Nitro that is suited to your needs. This will include report on plant, power, housing, raw materials, fire protection, transportation rates, civic activities, etc.

Among the 729 new manufacturing buildings in Nitro there is probably a plant already built which you will find ready and suitable to your needs. Prompt action is suggested. Although the resources of Nitro are enormous, they are now being assigned to manufacturers who have already recognized Nitro's unparalleled advantages. Inquiries will be handled in the order of receipt of the filled-in questionnaires.

ADDRESS ALL COMMUNICATIONS TO

CHARLESTON INDUSTRIAL CORPORATION

Industrial Development Division

NITRO, WEST VIRGINIA

or to the

Vice-President, 62 Cedar Street, New York