

MANY NEW ATTRACTIONS AT THEATRES NEXT WEEK

THE PLAYGOER'S WEEKLY TALK

Observations on Plays and Photoplays of Interest to Philadelphians

FORTUNATE is the actor who served his apprenticeship as a minstrel man and yet never was called upon to exercise his lungs in that noisy pursuit...

MARIE DRESSLER comedienne, producer-organizer, etc. is one of the busiest women on the stage today.

Monday afternoon Miss Dressler is to take to members of the New Century Club her subject being "The American Woman and Her Duty to Her Generation."

THE ATRE BILLS FOR NEXT WEEK

New Attractions CHESTNUT—"Somebody's Sweetheart," an Arthur Hammerstein musical comedy.

CASINO WALNUT—10,000 Ladies Attend Weekly. All Next Week MAX SPIEGEL'S NEWEST Abe Reynolds' Revue

TROCADERO 10th & Arch, Mat. 8:15. This Week Commencing Feb. 1. "The Cat-Bird"

WALNUT—"Down Limerick Way" presenting Fiske O'Hara, the popular Irish singing actor, in a characteristic

THEATRE DE L'OPERA 11th & Chestnut. TUES. EVE. Feb. 3, AT 8. L'Oracolo CLEOPATRA'S NIGHT

THEATRE DE L'OPERA 11th & Chestnut. TUES. EVE. Feb. 3, AT 8. L'Oracolo CLEOPATRA'S NIGHT

THEATRE DE L'OPERA 11th & Chestnut. TUES. EVE. Feb. 3, AT 8. L'Oracolo CLEOPATRA'S NIGHT

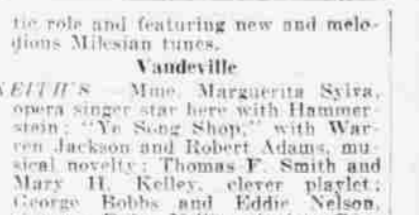
ACROSS THE LOCAL FOOTLIGHTS



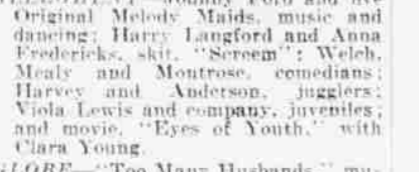
JAMES L. CRANE, "FOREVER AFTER" Lyric... MARGUERITA SYLVA, "KEITH'S" Keith's... JOHN DREW, "THE CAT BIRD" Philadelphia... CHARLES LAITE, "3 WISE FOOLS" Garrick... GLADYS PARKER, "ABE REYNOLDS' REVUE" Casino... BILLY RITCHIE, Globe



JANE CARROLL, "GREENWICH VILLAGE FOLLIES" Shubert...



MARIE DRESSLER, "TILLIE'S NIGHTMARE" Broad...



FISKE O'HARA, "DOWN LIMERICK WAY" Walnut...



SYBIL BETHEL, "SOMEBODY'S SWEETHEART" Chestnut...



JOHN DREW'S ENGAGEMENT EXTENDED



CHARLES LAITE, "3 WISE FOOLS" Garrick...



GLADYS PARKER, "ABE REYNOLDS' REVUE" Casino...



BILLY RITCHIE, "GLOBE" Globe...



WM. H. THOMPSON, "CRIMSON ALIBI" Adelphi...



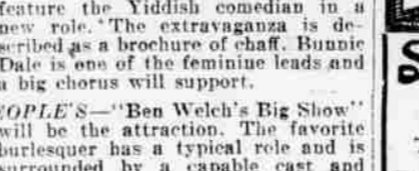
John Drew's Engagement Extended



CHARLES LAITE, "3 WISE FOOLS" Garrick...



GLADYS PARKER, "ABE REYNOLDS' REVUE" Casino...



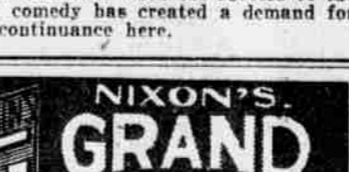
BILLY RITCHIE, "GLOBE" Globe...



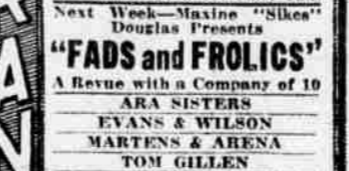
WM. H. THOMPSON, "CRIMSON ALIBI" Adelphi...



John Drew's Engagement Extended



CHARLES LAITE, "3 WISE FOOLS" Garrick...



GLADYS PARKER, "ABE REYNOLDS' REVUE" Casino...



BILLY RITCHIE, "GLOBE" Globe...

the role and featuring new and melodious Miksonian tunes.

Vandeville KEITH'S—Miss Marguerita Sylva, opera singer star here with Hammerstein.

GRAND—"Fads and Frolics" song revue; Mertens and Arena, act for the first time.

ORPHEUM—"The Eternal Magdalene," by Robert McLaughlin, deals with the chastening process by which a self-righteous man learns to condone and understand the sins of erring humanity.

FORREST—"Hitchy-Koo," of the 1919 version of Raymond Hitchcock's characteristic revue.

SWIFT & KELLEY—American Pianists of Distinction SPECIAL FEATURE—THE EVER POPULAR PERSONALITY PAIR

MORTON & GLASS—Naomi Offering a Delightful Musical Satire

MAE DESMOND AND HER PLAYERS IN THE MOST MUSICAL PLAY OF THE CENTURY

ETERNAL MAGDALENE A MESSAGE TO HUMANITY February 9—MAGGIE PEPPER Fashion Show Staged by Blinners

CORTOT Piano Recital by Alfred

KREISLER Orchestra

melodrama and emotional drama, based on the change wrought in the lives of three bachelors, who adopt the daughter of their sweetheart of yore.

PHILADELPHIA—"The Cat Bird," a comedy of sparkling dialogue and a clever basic idea which is well carried out.

ORPHEUM—"The Eternal Magdalene," by Robert McLaughlin, deals with the chastening process by which a self-righteous man learns to condone and understand the sins of erring humanity.

FORREST—"Hitchy-Koo," of the 1919 version of Raymond Hitchcock's characteristic revue.

SWIFT & KELLEY—American Pianists of Distinction SPECIAL FEATURE—THE EVER POPULAR PERSONALITY PAIR

MORTON & GLASS—Naomi Offering a Delightful Musical Satire

MAE DESMOND AND HER PLAYERS IN THE MOST MUSICAL PLAY OF THE CENTURY

ETERNAL MAGDALENE A MESSAGE TO HUMANITY February 9—MAGGIE PEPPER Fashion Show Staged by Blinners

CORTOT Piano Recital by Alfred

KREISLER Orchestra

Forrest FRIDAY AFTERNOON Feb. 6 AT 2 O'CLOCK SHARP

"ture," Alan Dale's dramatic comedy, in which many feminist ideas are set forth with much wit.

PHILADELPHIA—"The Cat Bird," a comedy of sparkling dialogue and a clever basic idea which is well carried out.

ORPHEUM—"The Eternal Magdalene," by Robert McLaughlin, deals with the chastening process by which a self-righteous man learns to condone and understand the sins of erring humanity.

FORREST—"Hitchy-Koo," of the 1919 version of Raymond Hitchcock's characteristic revue.

SWIFT & KELLEY—American Pianists of Distinction SPECIAL FEATURE—THE EVER POPULAR PERSONALITY PAIR

MORTON & GLASS—Naomi Offering a Delightful Musical Satire

MAE DESMOND AND HER PLAYERS IN THE MOST MUSICAL PLAY OF THE CENTURY

ETERNAL MAGDALENE A MESSAGE TO HUMANITY February 9—MAGGIE PEPPER Fashion Show Staged by Blinners

CORTOT Piano Recital by Alfred

KREISLER Orchestra

Forrest FRIDAY AFTERNOON Feb. 6 AT 2 O'CLOCK SHARP

John Drew's Engagement Extended

PHILADELPHIA—"The Cat Bird," a comedy of sparkling dialogue and a clever basic idea which is well carried out.

ORPHEUM—"The Eternal Magdalene," by Robert McLaughlin, deals with the chastening process by which a self-righteous man learns to condone and understand the sins of erring humanity.

FORREST—"Hitchy-Koo," of the 1919 version of Raymond Hitchcock's characteristic revue.

SWIFT & KELLEY—American Pianists of Distinction SPECIAL FEATURE—THE EVER POPULAR PERSONALITY PAIR

MORTON & GLASS—Naomi Offering a Delightful Musical Satire

MAE DESMOND AND HER PLAYERS IN THE MOST MUSICAL PLAY OF THE CENTURY

ETERNAL MAGDALENE A MESSAGE TO HUMANITY February 9—MAGGIE PEPPER Fashion Show Staged by Blinners

CORTOT Piano Recital by Alfred

KREISLER Orchestra

Forrest FRIDAY AFTERNOON Feb. 6 AT 2 O'CLOCK SHARP

PHILADELPHIA'S FOREMOST THEATRES

FORREST NEXT WEEK LAST WEEK RAYMOND HITCHCOCK

HITCHY-KOO of 1919 BOOK BY GEO. V. HOBART—MUSIC BY COLE PORTER

MON., FEB. 9—LIMITED ENGAGEMENT MATINEES WEDNESDAY AND SATURDAY

BEN HUR THE WORLD'S MIGHTIEST PLAY 350—PEOPLE IN THE MASSIVE ENSEMBLE—350

GARRICK "PARTING IS SUCH SWEET SORROW" THAT IT HURTS TO SAY GOOD BYE TO

3 WISE FOOLS WHICH POSITIVELY END SAT. NIGHT FEBRUARY SEVENTH

ELSIDIE JANIS AND HER GANG "A PEACH OF A SHOW."—N. Y. Times

MARIE DRESSLER IN THE SEASON'S MUSICAL COMEDY SENSATION

TILLIE'S NIGHTMARE A MERRY WHIRL OF FUN AND MUSIC WITH A WEALTH OF

PHILADELPHIA NEXT WEEK POSITIVELY LAST WEEK

JOHN DREW "THE CAT-BIRD" THE MOST SUCCESSFUL COMEDY SEEN IN PHILADELPHIA

ROLLO'S WILD OAT WITH COMEDY BY CLARE RUMBLE

PEOPLES BEN WELCH AND HIS ALL-NEW REVUE

W.M. PENN W. HORTLICK and SARAMA SISTERS

ACADEMY OF MUSIC Sir Oliver Lodge The Destiny of Man

PEOPLES BEN WELCH AND HIS ALL-NEW REVUE

W.M. PENN W. HORTLICK and SARAMA SISTERS

ACADEMY OF MUSIC Sir Oliver Lodge The Destiny of Man