

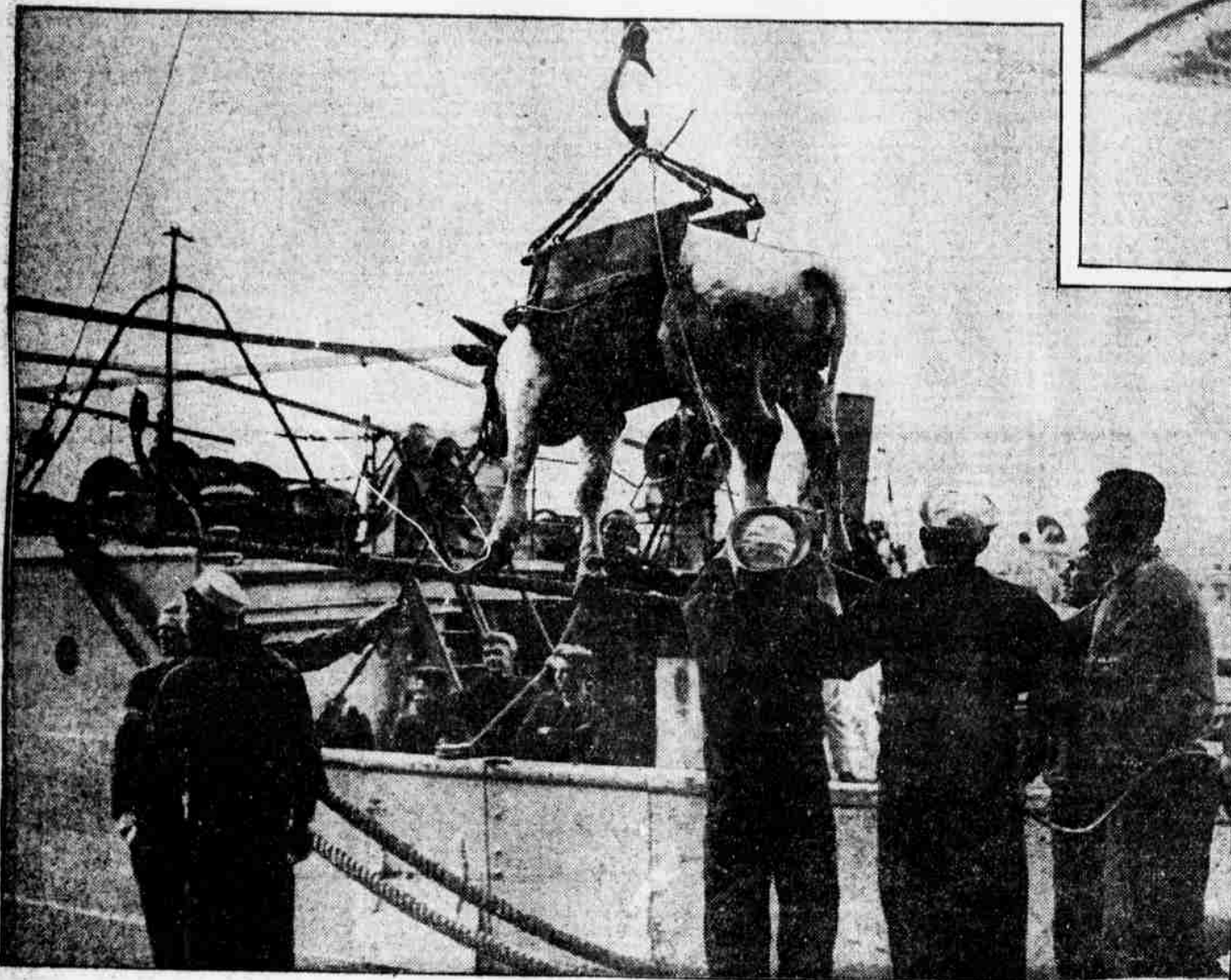
Skate and Gangplank Actions : Cow Passenger for Guam : Mayor Studies Court : Ice Harvest



ERNEST BERGER, well-known athlete and fancy skater, in a leaping stunt on the ice at Lake Placid, New York.



A CUSTOM INSPECTOR of the port of Philadelphia negotiating with all speed and skill the moving passage from the revenue cutter to an inbound ice-cooled steamer on the Delaware river.



SAILORS LOADING a cow on the U. S. transport Pensacola at San Francisco bound for the Island of Guam. The vessel is carrying various species of live domestic animals to Uncle Sam's favored Pacific island.

MAYOR MOORE (at right) sharing Magistrate Mcleary's bench in Central Station "to get a line on conditions" as he studies the petty offenders called for hearings.



PASSENGER TRAFFIC in the East Indies—a two-man power skiff of one-man capacity not dependent on coal, gasoline or electricity to ferry passengers across the Far East stream.

THE BEAUTY CORNER



HARVESTING ICE on Perkiomen creek, floating ten and twelve inch cakes of ice down the stream to the storehouses to be stocked till summer, when the ice is shipped to Philadelphia.



WILLIAM JAMES FLYNN, U. S. secret service department chief, directing operations in the nation-wide roundup of Reds.



MISS ALMA CARR, 126 North Conestoga street, Philadelphia. Photographs for this back-page feature should be submitted through the mail, addressed to the Beauty Corner, EVENING PUBLIC LEDGER.