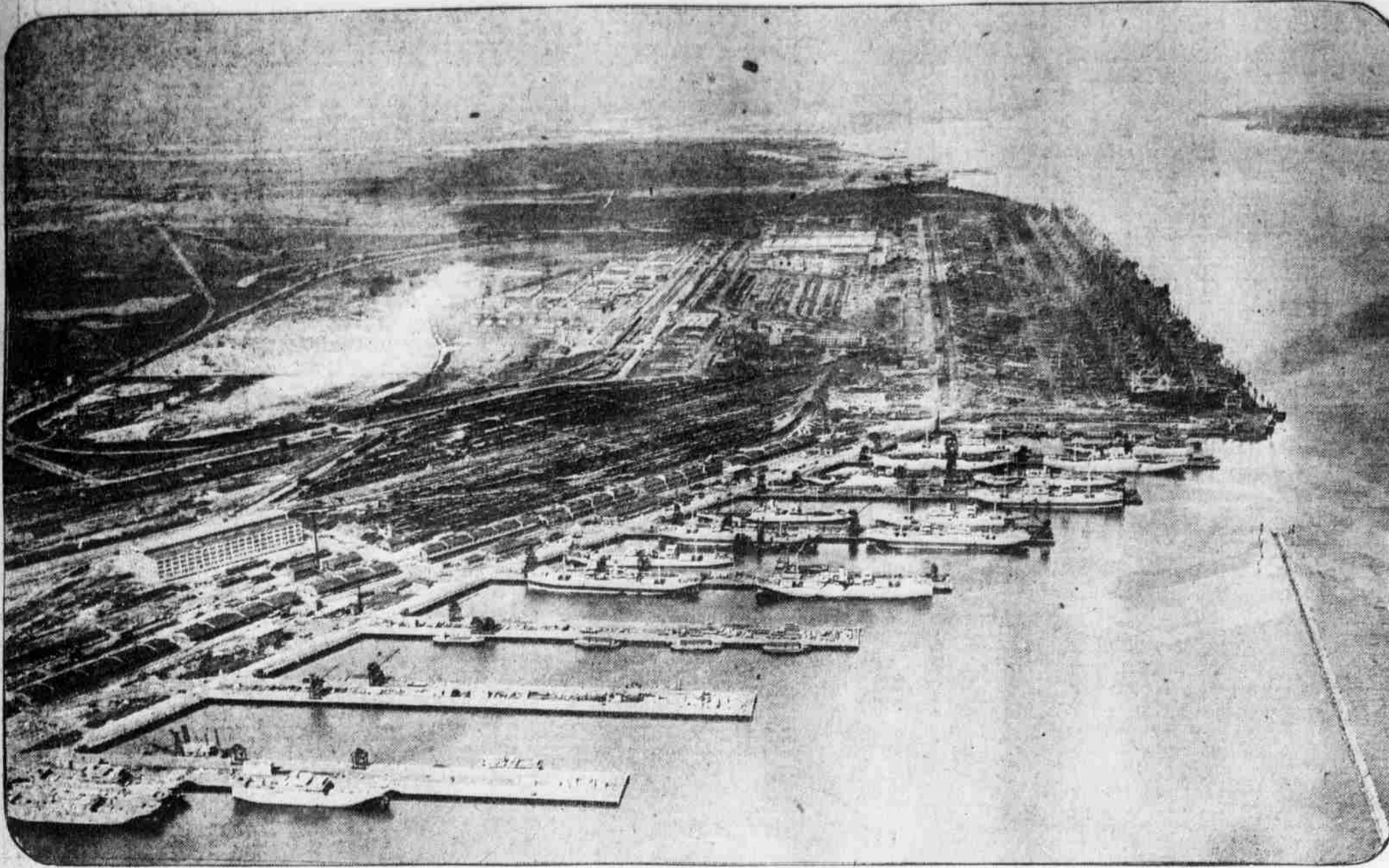


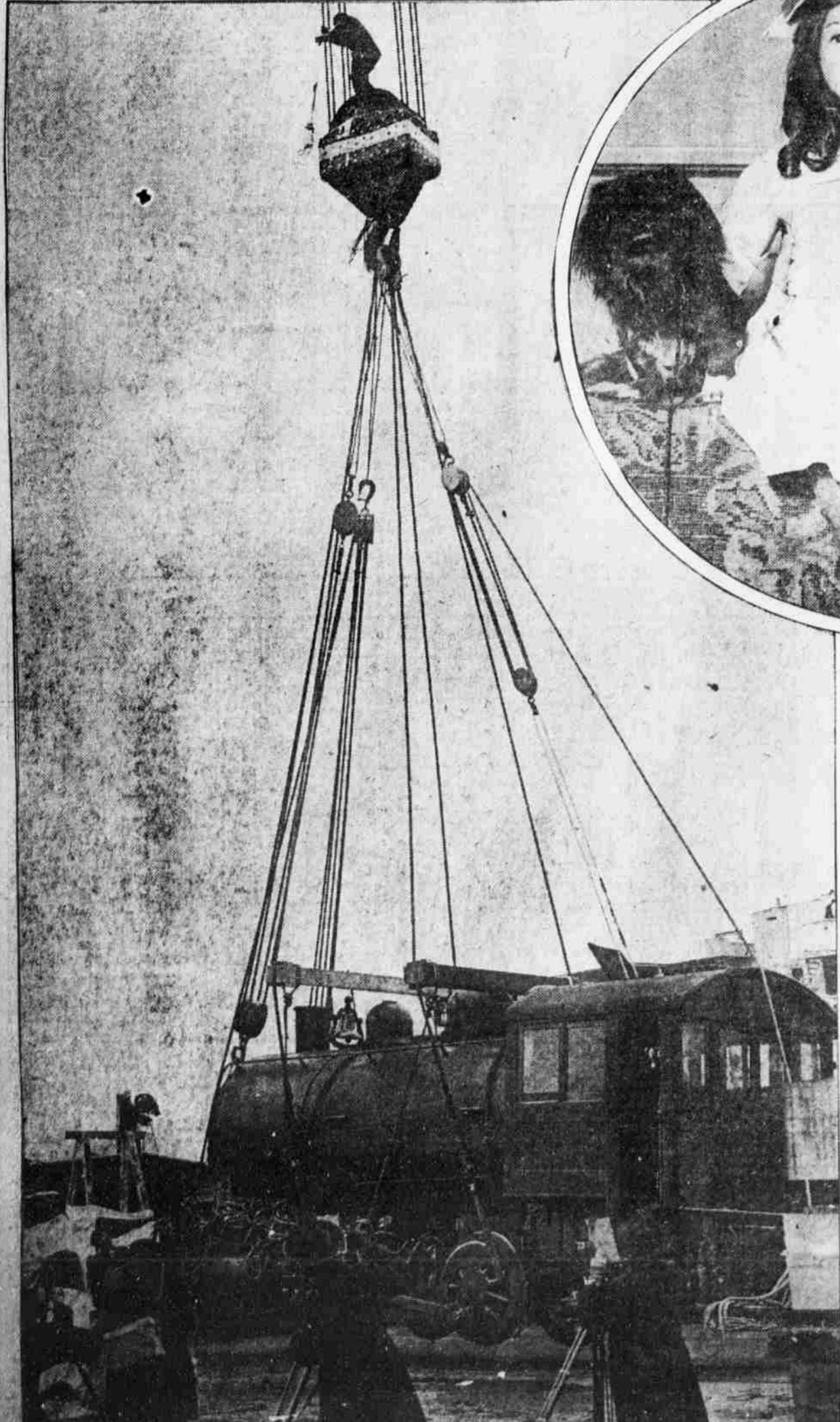
World's Largest Shipyard From Aloft : Tank Corps Practice : Giant Crane Lift : "Prunella"



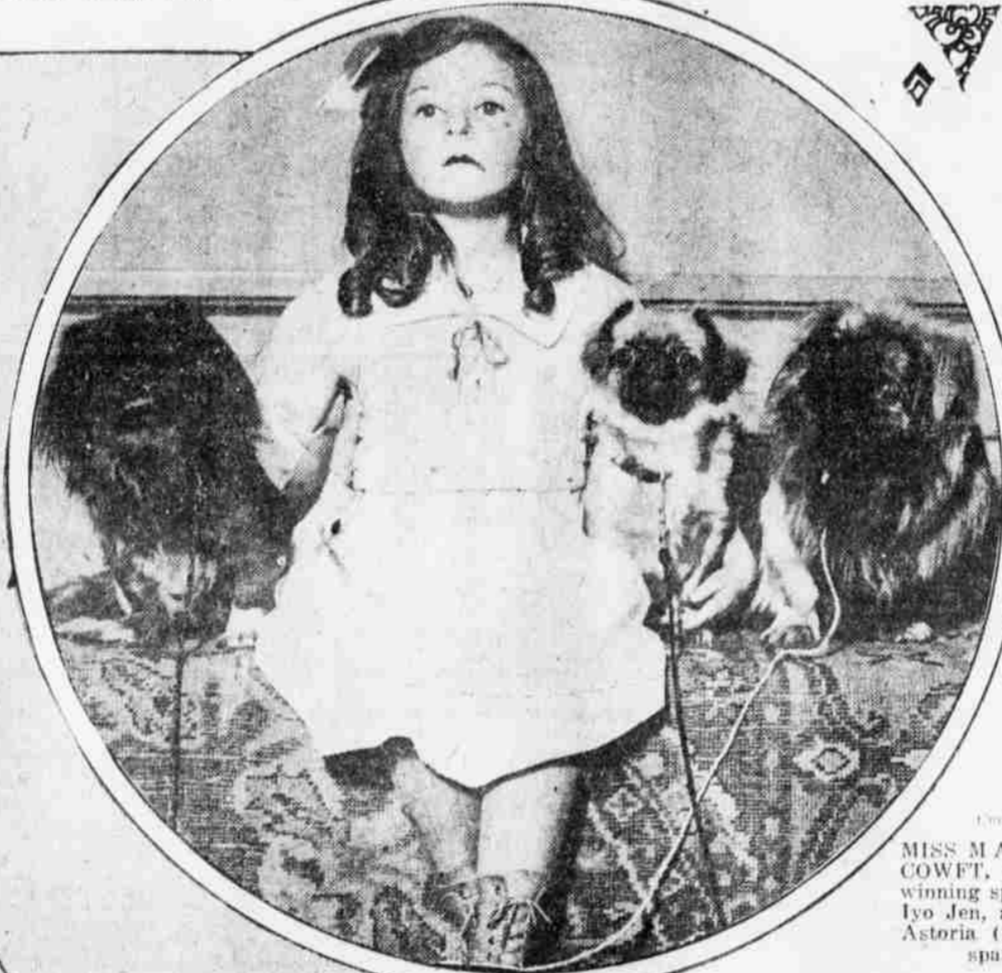
FLYING OVER the world's greatest shipyard, a hydroplane view of Hog Island on the Delaware river from a height of 3000 feet. The yard covers over 900 acres of land, has fifty shipways and seven 1000-foot-long fitting-out piers, and employs 30,000 men and women. At the conclusion of its shipbuilding activities it promises to become the greatest fresh-water terminal in the United States.



BRYN MAWR graduates enact "Prunella," by Laurence Housman, for the benefit of the Bryn Mawr Endowment Fund. Miss Muriel Barker, an alumna of Newham College, Cambridge, as Pierrot, and Miss Gertrude M. Sinclair, a graduate of Girton College, Cambridge, as Prunella. Miss Mary D. Penrose, graduate of Whitman College, Walla Walla, Wash., as the statue of love.



PICKING UP a locomotive or two at a time is all in the day's work for the giant crane "League Island," newly installed at the Philadelphia Navy Yard. The mammoth piece of machinery has a lifting capacity of 350 gross tons and is equipped with an auxiliary hoist which operates along a horizontal trackway or cantilever between the two 175-ton-capacity-hoist runways.



MISS MADELINE D. COWET, with her prize-winning spaniels Lola and Iyo Jen, at the Waldorf-Astoria (New York) toy spaniel show.



THE TANK CREWS of the United States land battleships keeping in trim for possible developments south of the Rio Grande, with a little "knock-down and drag-out" practice, at El Paso, Texas.

THE BEAUTY CORNER



MISS NORMA DALROY, 403 North Fifty-fourth Street, Philadelphia. Photographs for this back-page feature should be submitted through the mail, addressed to the Beauty Corner, EVENING PUBLIC LEDGER.



PUBLIC SCHOOL CHILDREN of a New York "outdoor class," dressed in their blanket coats, recently gave a demonstration of open-air study on the steps of the Public Library to aid the Red Cross Christmas seal drive.