

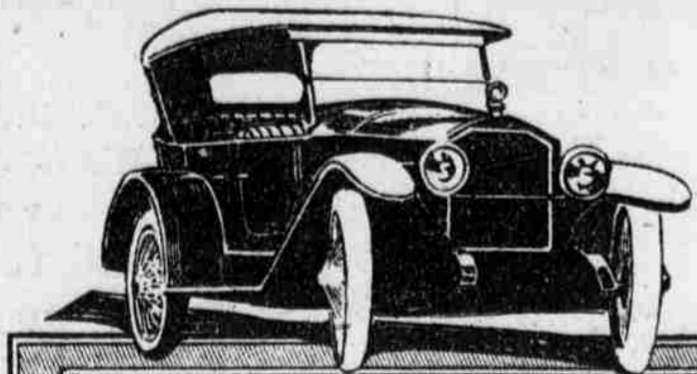
"THIN CLOTHES UNMORAL," SAYS GIRL HEALTH EXPERT

Dr. Florence L. Meredith, However, Takes Issue With New York Health Chief on Fashions—Avers His Deductions Are Unscientific

New York, Dec. 5.—"Like a gallant knight errant Doctor Copeland has rushed to the defense of—whom? His sisters in the upward march of civilization? No; to the defense of the girl who is so stupid and vain and self-centered that she will sacrifice anything, even the health of her body, to win this gallant admiration: the girl who is so silly that she has to use rouge to present a counterfeit of health, who is so dirty that she has to use powder to cover up her unwholesome skin, who carries so little about being of use in the world that she is willing to cripple herself, falsely believing, as hundreds of girls have told me, that 'men wouldn't like to see them in what they consider unappealing clothes.'"

Men are becoming longer lived, and that sanitarians for nervous people have not received an unusual number of patients, are, of course, not a scientific basis for the deductions which he makes. The young physician continued more calmly. "I do not think high heels or corsets are a cause of premature death. They merely lower efficiency. The woman who wears them is merely less alive. She is 75 per cent alive instead of 100 per cent. I take no issue with Doctor Copeland on the question of thin clothes, provided the health is such that the body can keep itself warm. And if the health is not such it should be made

in. My objection to very thin clothing is entirely a moral one. "Most women have very vague ideas about their responsibility in the matter of tempting men away from what their own ideals would have them cleave to. Men Want Healthy Women "Returning to the other question of the aesthetic appeal of innocent clothes to men, I think we are coming to a new ideal. I think most men, especially since the war, have got a different interest in women and girls, and I think they realize that if women have not reliable health they are of very little use in any sphere of life. "And I think the best type of girl generally feels that if she has no way of interesting men except by deforming her feet and her figure and painting her face, she will go husbandless—believing singleness would be a blessing in comparison to living with a man who could stand such a woman. Only the man who has low ideals for women and who does not care how far they get in life or how much comfort they get out of living—a somewhat hard-hearted and soft-headed man, in short—would care for such a girl."



Stearns KNIGHT

No matter how much you pay for a car you cannot buy more satisfying performance, more riding ease, more artistic design than you find in the Stearns. Its wonderful Knight motor, its excellence of construction throughout, its luxurious appointments make it the best automobile "buy" today.

Manypenny-Scott Motor Company 908 North Broad Street Poplar 1565

ACTORS WIN SUPPORT

Charles Evans Hughes and Others Pledge Aid to Sponsorship New York, Dec. 5.—A national sponsorship of dramatic art through the Actors' Fund of America was assured when Charles Evans Hughes and other distinguished guests pledged their

"constant interest and support" to the movement suggested at a breakfast to the trade committee chairman of Actors' Memorial Day by Daniel Frohman, president of the fund. The national sponsorship plan was outlined by W. Ward Smith, associate chairman of the memorial day committee, who, in thanking the guests for their co-operation, said: "From this time on the fund is to be per-

manent thing and I want you to feel that you have had an opportunity of becoming a charter member in this first big national movement to sponsor the stage." John D. Rockefeller, Jr., today transmitted for himself and Mrs. Rockefeller a subscription of \$25,000 to the Actors' Fund of America.

MINE RUNAWAY KILLS TWO

Four Badly Hurt When Cars Dash Down Slope as Cable Breaks Wilkes-Barre, Pa., Dec. 5.—(By A. P.)—Two men were killed and four seriously injured when a trip of cars in which they were riding ran away in the Franklin slope of the Lehigh and

Wilkes-Barre Co., yesterday afternoon. The victims follow: Dead—Joseph Blancheck, forty-three; Charles Armstrong, twenty-four. Seriously injured—John Philbrick, forty-three; Joseph Vida, thirty-seven; Harry Young, twenty-two; Andrew Catten, fifty-five. The men were entering the mine and the trip had scarcely started when the cable snapped and the cars dashed 300 feet to the bottom.

Jewelry for Christmas

A diamond watch or other piece of beautiful jewelry selected from our almost unlimited assortment, can be very easily obtained through our perfect Confidential Credit Plan This makes purchasing an easy matter for you, spreading the payments—based on each price—over such a period that you never miss the money. OPEN EVERY EVENING A. Simon & Sons 135 South 13th St. Near Walnut St.



CRANE'S PHILADELPHIA ICE CREAM The City's Pride 23 Years Ago The City's Pride Today "THE Sign of the Crane," where ever displayed, has always stood for honest ice cream. That's why Crane's has been sought by thousands of Philadelphians for more than 20 years. Our tripled capacity will meet all demand no matter how great. One quality only—the best. Look for "The Sign of the Crane"

WINTER RESORTS

- ATLANTIC CITY, N. J. CHARLES HOTEL ON THE OCEAN FRONT... DENNIS HOTEL ATLANTIC CITY, N. J. An American Plan Hotel... DALEIGH HOTEL... HOLMURST HOTEL... RUNDY MEDE HOTEL... HOTEL AUSTINE... THE WILTSHIRE... HOTEL CONTINENTAL... HOTEL BOSCOBEL... WILDWOOD, N. J. WILDWOOD BY-THE-SEA... Heated Hotels... THE DOUGLASS ROYAL INN... LAKEWOOD, N. J. AUREL in the PINES LAKEWOOD - NEW JERSEY... POCONO MOUNTAINS... The Outwood... SCHWENKVILLE, PA. Perkiomen Inn... WASHINGTON, D. C. Wardman Park Hotel... BURLINGTON HOTEL... OLD POINT COMFORT HOTEL CHAMBERLIN... CLEARWATER, FLORIDA... THE KIRKWOOD

Manufacturers note

Homes for 12,000 workers

now available at Hopewell, Virginia, the new industrial city of the South

The shortage of houses and consequent high rents in the vicinity of your plants affect you, as employers, in exact proportion as they affect your employees. Your workers, unable to obtain comfortable and attractive homes at fair rents, are bound to become discontented. Discontent reduces the efficiency of your workers. It destroys loyalty and creates fertile ground for unrest. Housing conditions at Hopewell are ideal. That's one of the big reasons why Hopewell is an ideal location for your manufacturing plant.

Aside from this factor of discontent, housing shortage prevents concentration of workers in homes near your plant. Have you considered such a condition in its relation to the number of absentees from work and the amount of tardiness among your employees? The greater the distance they must travel between home and factory, the greater is the temptation to remain home when the weather is bad. The chances for delay in reaching work in time also are increased in proportion to this distance. It obviously is greatly to your advantage to have your employees live near the factory. Lack of proper housing alone makes this impossible. No Housing Problem at Hopewell Hopewell did not grow in haphazard fashion. It was designed and built as a model manufacturing city. Its residential and industrial areas, while separate and distinct, are perfectly co-ordinated. Every Hopewell house is within easy walking distance of a Hopewell factory. In addition, Hopewell's homes are models of comfort and attractiveness. They have electric lights, water, plumbing and all other modern conveniences. They have pretty lawns and gardens and are surrounded by well-paved streets. What is equally important, there is no rent profiteering. Hopewell workers can buy their own homes cheap and on easy terms or rent them for \$11 to \$15 a month, and there are no big electric light, water and coal bills to eat up earnings. For manufacturers and executives there are houses beautifully situated along the James River. Big Opportunity for Manufacturers The city's superb housing facilities make it possible for manufacturers to move all or part of their operative forces to Hopewell, if desirable, along with their plants. This is not necessary, however, as Hopewell has a supply of labor, skilled and unskilled, male and female, adequate for all present and future need. Hopewell offers a great deal more than homes and labor. It offers factories ready to turn on electric or steam power, and factory sites with railway sidings already built. These sidings enable you to load cars right at your factory door for unloading at the Hopewell wharf or at any point in the United States. You can buy a small factory or a large factory—a small site or a large site. We are not offering Hopewell to one manufacturer, but to many manufacturers. Hopewell's Great Advantages As a manufacturing location Hopewell has advantages that are unexcelled anywhere in America. It is part of the Petersburg-Hopewell Industrial District and lies 23 miles south of Richmond and 82 miles west of Norfolk. The district is a railway center and a tidewater port and has a climate unsurpassed for health and industrial activity. Hopewell has low-priced steam and electric power, light and heat; a water purification plant with a capacity of 50,000,000 gallons daily; accessible raw materials, low-

Wanamaker Brown Founded 1861 Oak Hall to the Fore With Winter's Greatest Sale of Finest Overcoats SIX HUNDRED in number, including every kind of cloth and style a man can want, all-wool—our own make going out quickly at decisive reductions. In the last four years everything—findings, trimmings, cloths—that goes into the construction of a good overcoat has advanced more than two hundred and fifty per cent. Yet, you can come into Oak Hall now and purchase these overcoats at the prices which ruled four years ago. Think of it. The \$20 Overcoats until now were \$30 The \$30 Overcoats until now were \$40 & \$45 The \$35 Ulsters until now were \$50 The \$45 Overcoats were up to \$65 Nothing loud or noisy anywhere to be found among them. Each overcoat has been taken from our regular stocks and placed on separate tables to be quick of access for men in a hurry. The special group of \$50 ulsters at \$35 will be among the chief objective points of the sale. Meltons, blanket cloths, fleeces, lambs' wools, plaid backs, even imported Oldroyds from Dewsbury, England. Ulsters, storm coats, great coats, conservative Chesterfields, oxfords, grays, blues, blacks, browns, with kerseys as low as \$30. Never overcoats like these until today in this Season of 1919-20.

Prices Come Down in Woman's Shop! Clearance without regard to cost or former selling price in coats, suits and dresses. FOUR STYLES OF \$75 COATS: SILVERTONES, TINSELTONES, VELOURS, FULLY SILK LINED AND INTERLINED; SEAL COLLARS AND CUFFS, NUTRIA COLLARS \$55.00 NOVELTY TWEED COATS IN BROWNS AND BLUES; HALF LINED SEAL COLLARS \$25.00 \$48.75 DUVET DE LAINE COATS, SEAL COLLARS IN BROWNS, NAVYS, TAUPES AND BLACKS \$42.50 ONE HUNDRED NEW SAMPLE COATS OF MANY STYLES, REGULARLY \$49.75 TO \$79.50 QUALITIES MARKED FOR CLEARANCE AT \$39.75 SUITS OF SILVERTONE VELOUR, OXFORDS, NAVY, BROWNS AND BEAVERS, REGULARLY \$55. ALSO TWEED SERGES AND WOOL POPLINS, EIGHT DIFFERENT STYLES \$39.75 DARK BROWN AND TAUPE COATS WITH SEAL COLLARS, FULLY LINED, ESPECIALLY FINE FOR MISSES \$34.50 200 NEW JERSEY WOOL KNIT SUITS, REGULARLY \$36, ALL SIZES. OXFORD GRAY, COPENHAGEN BLUE AND BROWN HEATHERS \$22.75 WOOL VELOUR COATS WITH SEAL COLLARS, DARK BROWNS, NAVYS AND TAUPES, FULLY LINED, \$38.75 QUALITY \$34.50 TRICOTINE, TRICOLETTE, WOOL JERSEY AND CREPE METEOR DRESSES—NAVYS AND DARK BROWNS, ALSO EMBROIDERED SERGES, REGULAR \$35 TO \$45 QUALITY \$25.00 CHEVRON, TINSELTONES, WOOL VELOURS, BROAD-CLOTH, PLAIN TAILORED SUITS, MANY STYLES IN THIS GROUP; VALUES \$75.00 FOR \$55.00 \$55.00 NEW WOOL VELOUR COATS IN BROWNS, COPENHAGENS, REINDEER AND MOROCCOS, ALSO SILVERTONES, 845 QUALITIES \$34.00 DIAGONAL SERGE SUITS OF \$35 QUALITY; NAVY, BROWN AND BLACK. MANY SUITS FROM REGULAR STOCK HAVE BEEN ADDED HERE \$25.00 HANDSOME SUITS FROM \$55 TO \$89.75; FUR AND SELF TRIMMED, ALL SEASON'S FABRICS AND COLORS. SEVERAL STYLES WITH PLENTY OF SAMPLE SUITS \$47.50 Boys' Suits and Overcoats Boys' \$20 Norfolk Suits, extra pair of bloomers, in grays and browns; sizes 7 to 17. \$18.00 Boys' all-wool Scotch plaid Mackinaws, sizes 10 to 18. \$12.50 Junior's belt model Overcoats, fine all-wool quality; regularly \$18.00; sizes 5 to 10. \$15.00 Special school Overcoats for boys; size 9 to 18; very stylish models; worth \$25 and \$27.50. \$20 & \$22.50

Men's Genuine \$12 Velour Hats, Saturday—\$8 Men's Genuine \$5 Wool Velour Hats, Saturday—\$2.50 Du Pont Chemical Co. Wilmington, Delaware Market at Sixth for 58 Years