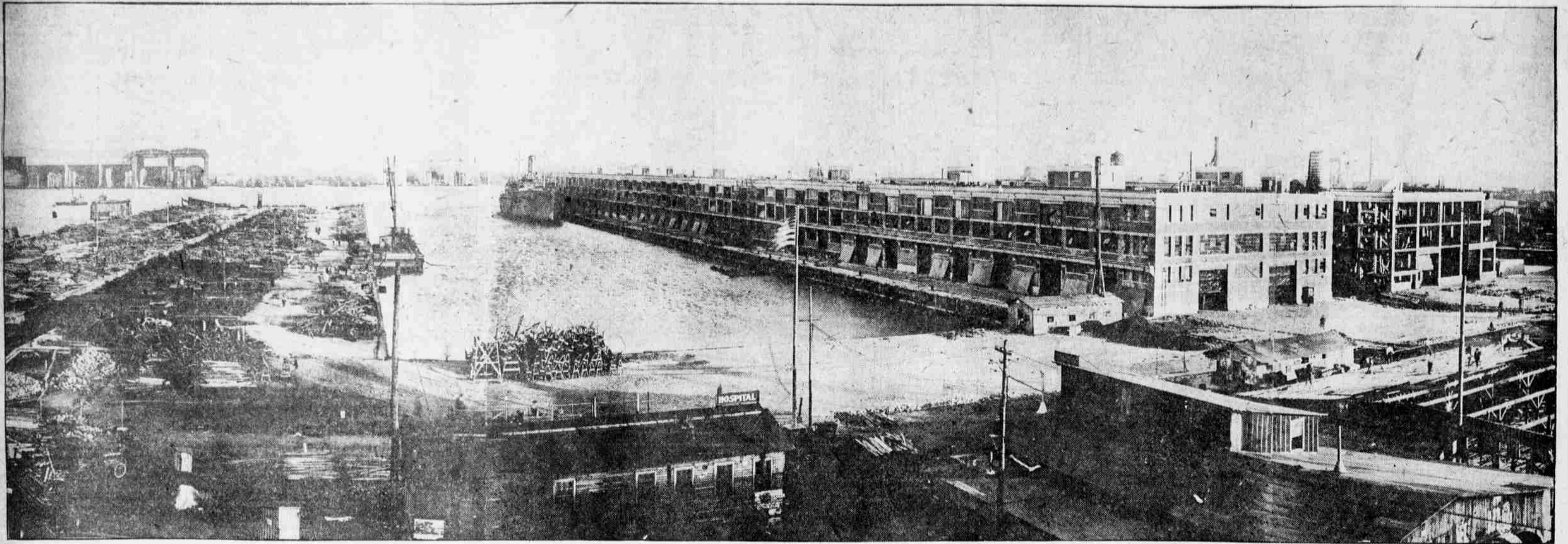


Greenwich Point U. S. Supply Base to Be Used for Port's Commerce : Coati Pet : Other Views



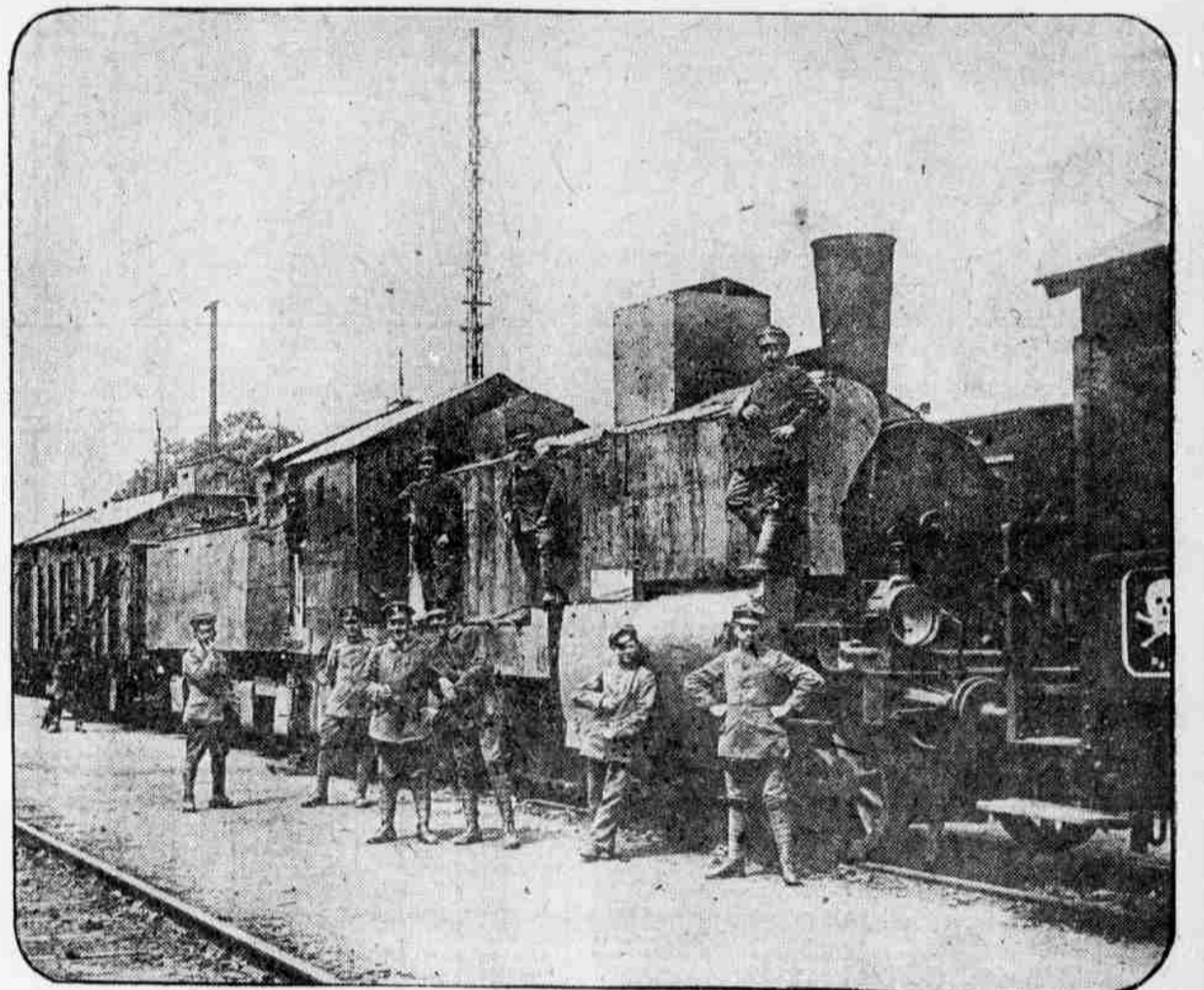
THE GREAT army supply base at Greenwich Point, adjoining the Philadelphia Navy Yard. Two of the largest piers in the United States, with warehouse capacity of 145,000 tons of cargo and berthing space for sixteen 7500-ton vessels, comprise the terminals. Plans are under way to lease the piers and warehouses to commercial interests.



VIEWING Greenwich Point terminal. The three men at the left are Charles Day, engineer; General W. W. Atterbury and Colonel E. B. Morden, U. S., constructing quartermaster here. In the front at the right is E. P. Passmore, governor of the Federal Reserve Bank.



A LITTLE honey-bear salute. This mammal is the mascot of the U. S. S. Alabama, stationed at League Island, and is a native of tropical America, where it is known as a coati. On shipboard the little bear answers to the name of Cootie.



GERMANY STILL warring. An armored train used in the fighting with the young Polish republic arriving at the Silesian frontier near Glinowitz.

THE BEAUTY CORNER



MISS JOSEPHINE LANDER, daughter of the superintendent of the late Theodore P. Shoup's farm. The \$2000 cow was given the girl by the New York traction magnate.



THE SHONT'S house on Neshaminy Farm, 305 acres of rich land near Newtown, Pa., claimed by Mrs. Amanda Thomas, who was described by the late president of the Interscholarship Rapid Transit Company as "my friend," and to whom the major part of his estate was bequeathed.



MISS SARAH ROSENBERG, 521 Morris street, Philadelphia. Photographs for this back-page feature should be submitted through the mail, addressed to the Beauty Corner, EVENING PUBLIC LEDGER.