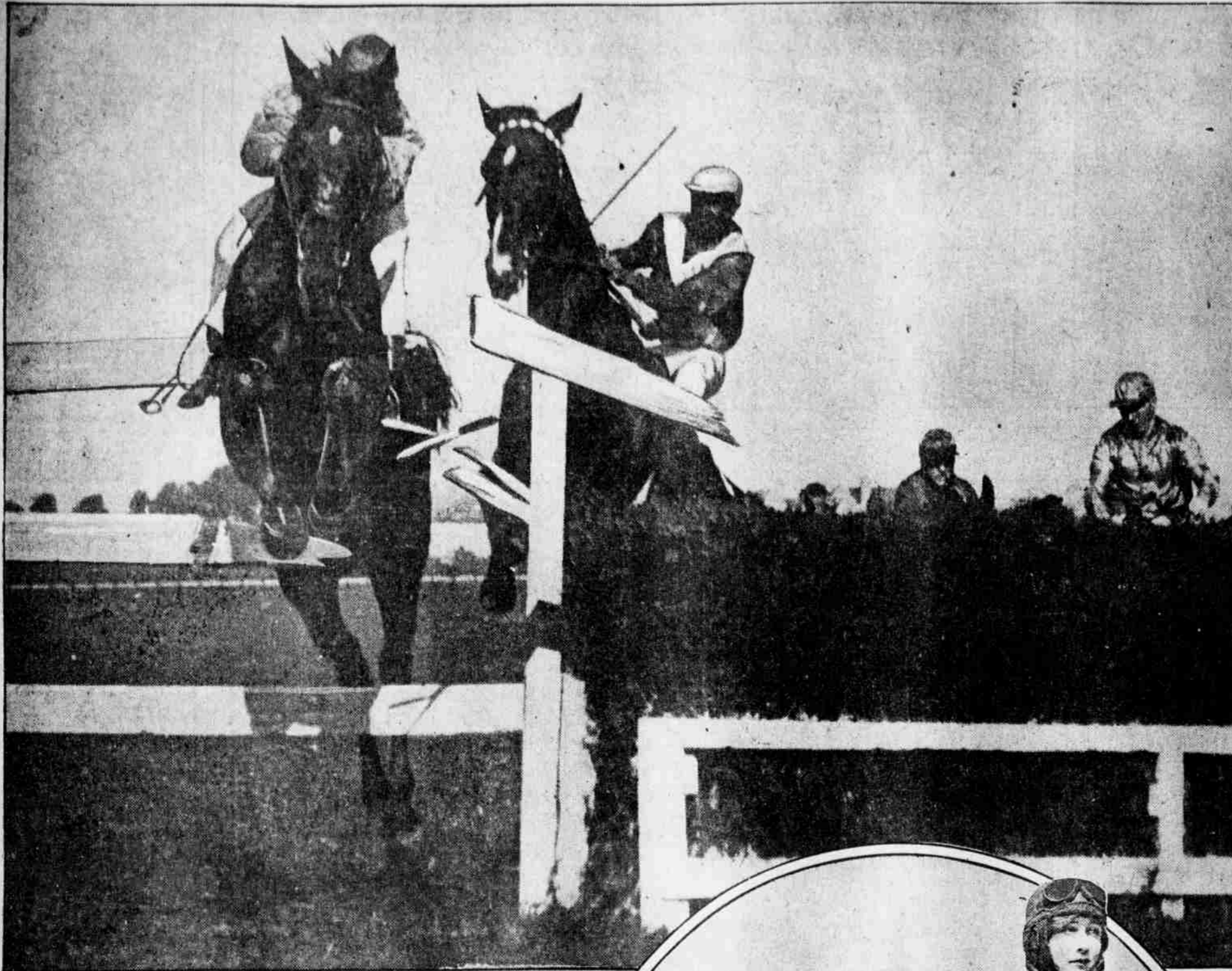


Melodramatic Action at Whitemarsh Races : Transcontinental Sky Pilot : Boardwalk Riders



Ledger Photo Service.
MELODRAMA, BROWN GELDING, owned by Ralph Strassberger, giving a sensational performance at the annual races of the Whitemarsh Valley Hunt Club at Erdenheim. The steed crashed through the wing at the side of the first jump, threw his rider, galloped around the field twice, broke through the brush and dashed across country with several grooms in pursuit.



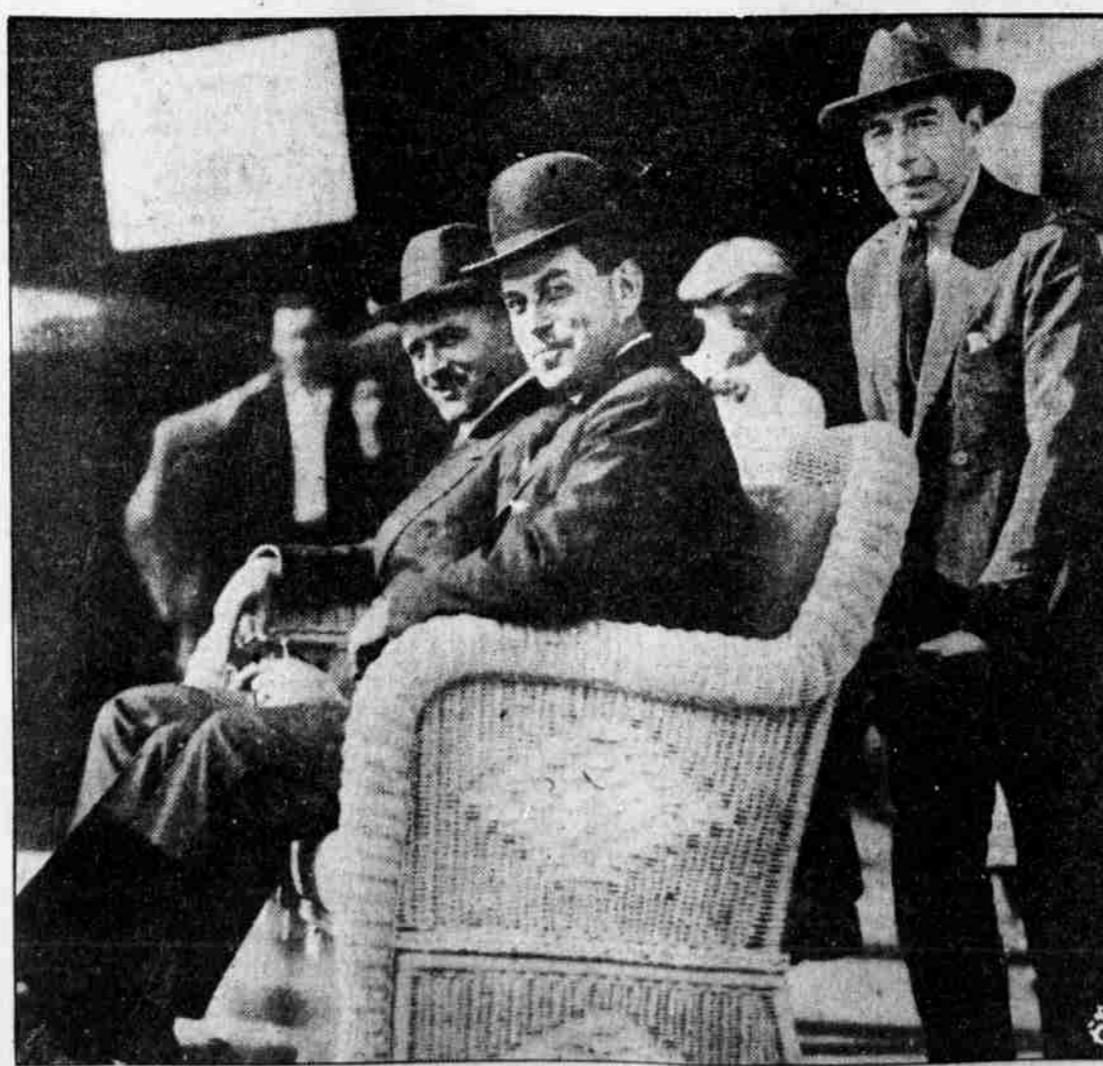
Universal Current Events.
LIEUTENANT BELVIN W. MAYNARD, the parson-aviator, who led the way from Mineola, L. I. to San Francisco, and his transcontinental mascot, Trixie. At the left is E. William Kline, mechanic of the sea-to-sea flight. Lieutenant Maynard will start back from San Francisco today.



Western Newspaper Union.
MRS. CHARLIE CHAPLIN, wife of the photoplay comedian, seated on one of the film star's airplanes, ready for a flight into the blue over Los Angeles. Mrs. Chaplin was formerly Miss Mildred Harris, screen star.



(c) International.
THOMAS A. EDISON, the inventor, underneath the tablet on the building at 257 Pearl street, New York city, site of the first central electrical lighting station. The plant was placed in operation in September, 1882.



Atlantic Photo Service.
NEWTON A. K. BUGBEE, Republican candidate for Governor of New Jersey, at left, and Mayor Harry Bacharach, of Atlantic City, rollerchair riding on the boardwalk at Atlantic City. The motive power is supplied by Enoch L. Johnson, Supreme Court Clerk of New Jersey.

THE BEAUTY CORNER



MISS MARIE LAFFERTY, 3128 North Judson street, Philadelphia. Photographs for this back-page feature should be submitted through the mail, addressed to the Beauty Corner, EVENING PUBLIC LEDGER.