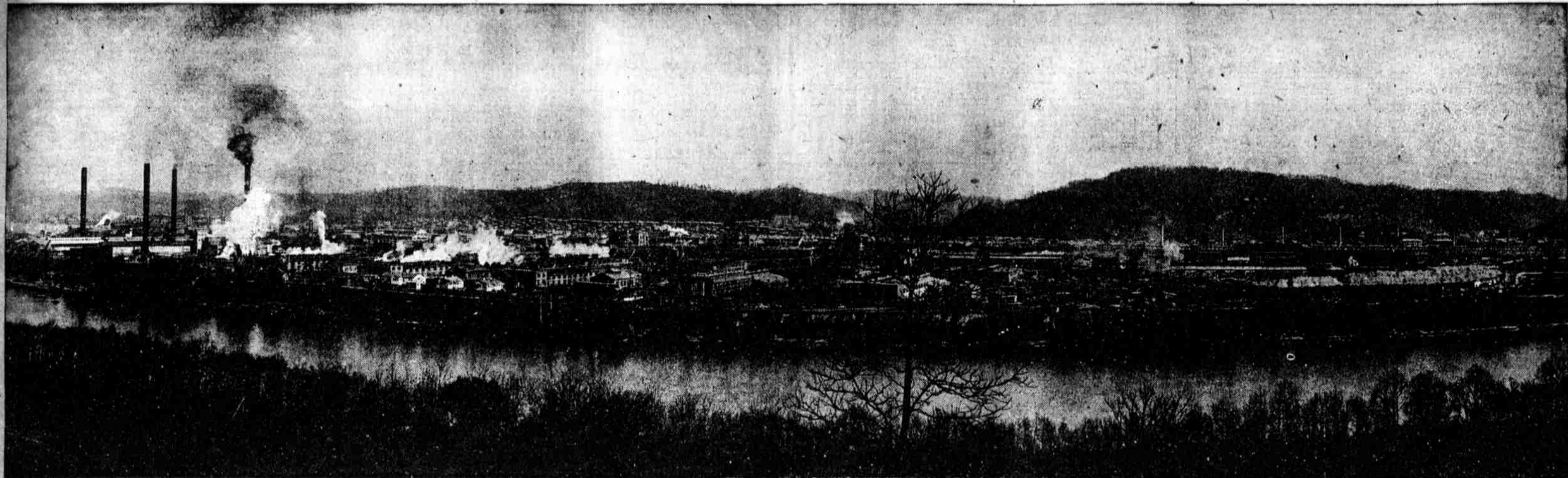


By Order of the Secretary of War, the

UNITED STATES OFFERS Nitro, West Virginia, For Sale



PORTION OF THE MANUFACTURING AREA, EXPLOSIVE PLANT "C," NITRO, WEST VIRGINIA

BIDS TO BE OPENED SEPTEMBER 30, 1919

A complete, industrial community, embracing 737 manufacturing buildings, housing accommodations for 20,000 persons, and the utilities and civic improvements that constitute the conveniences of a modern city.

LOCATED 16 miles northwest of Charleston, W. Va., on the main line of the Kanawha and Michigan Railway, and fronting three miles on the east bank of the Kanawha river, a navigable stream that affords water communication with world markets through the Great Lakes on the north and the Gulf of Mexico and the Panama Canal on the south.

This is one of the world's largest SMOKELESS POWDER PLANTS, includes many manufacturing units, all of which may be converted readily to commercial industries.

The industrial community includes a SULPHURIC ACID PLANT, with a capacity of 700 tons per 24 hours; a NITRIC ACID PLANT, capacity 300 tons; a COTTON PURIFICATION PLANT, capacity 225 tons; nitrating, celloiding and drying plants; REFRIGERATING AND ICE PLANTS; a box manufacturing plant; machine shop; thirty storage buildings; sixteen shipping houses, and numerous miscellaneous buildings.

The civic community embraces 1500 furnished portable houses, 75 permanently constructed executive residences, hotels, boarding houses, dormitories, clubhouses, general and special stores, cafeteria, moving-picture houses, a 400-bed hospital erected

under the supervision of the Federal Public Health service, a 24-room schoolhouse, a police station, bank and administrative buildings.

The utilities include a power plant equipped to furnish light and supply motive power. A transportation system, equipped with steam and storage battery locomotives, and consisting of 18 miles of permanent, broad-gauge and 19 miles of narrow-gauge railways, ties the industrial area together. A modern telephone system provides interplant and residential communication. Sewerage and water systems safeguard the health of the community, and provide protection against fire. A pitch-surfaced macadam road extends through the reservation.

Nitro is in the center of a region rich in natural resources. Surrounding coal fields supply the highest grade of steam and coking coal. Natural gas is available from wells located in the immediate vicinity. A high-grade crude petroleum is produced in this territory.

Labor skilled in iron, steel, chemical, glass and kindred industries can be recruited from sections of West Virginia immediately surrounding Nitro.

The United States recommends that parties interested in particular units of this project associate themselves for the purpose of submitting a bid for the entire property. To facilitate such bidding, government agents will put interested parties in touch with each other.

PROPERTY TO BE SOLD INCLUDES A COMPLETE MANUFACTURING COMMUNITY, THE VARIOUS UNITS OF WHICH ARE READILY ADAPTABLE FOR USE IN VARIOUS LINES OF INDUSTRIES

Sealed proposals will be received at the office of I. H. FRANCIS, CHAIRMAN OF THE ORDNANCE DISTRICT SALVAGE BOARD, 1710 MARKET STREET, PHILADELPHIA, PA., until 12:00 o'clock noon, September 30, 1919, at which time they will be publicly opened and read, for the purchase of the United States Government Explosives Plant "C," located at Nitro, West Virginia, which was constructed by the United States for the manufacture of smokeless powder. Proposals must be for the purchase, either for cash or for part cash and part deferred payments amply secured, and must cover all right, title and interest of the United States in all real

estate appertaining to this plant and all equipment, fixtures and personal property thereon and thereunto belonging, except that title to certain fixtures and personal property is reserved to the United States, information regarding which will be furnished prospective bidders on request. All proposals are to be accompanied by a money deposit in the form of a certified check made payable to the Treasurer of the United States in the amount of \$500,000.00. The United States reserves the right to reject any or all bids and to accept that bid which it is deemed will best serve the interests of the United States.

Facilities There is included in the property to be sold the following: 1800 acres of land, more or less; a SULPHURIC ACID PLANT in seven units with a rated capacity of 700 tons per twenty-four hours; a NITRIC ACID PLANT in four units designed to deliver 300 tons of nitric acid per day; a COTTON PURIFICATION PLANT of standard pulp mill design in four units with a capacity of 225 tons per day adaptable to the manufacture of wood as well as cotton pulp; Nitrating, Celloiding and Drying units; a large machine shop; a power plant of 35,000 rated boiler horsepower; a water system with a capacity of 60,000,000 gallons per twenty-four hours, including a purification works, sixty miles of distributing system and appurtenances; sewer, power and lighting facilities; a plant railway system, including rolling stock; a box factory; a civic develop-

ment comprised of houses for 20,000 persons; stores, school, hotel, 400-bed hospital, milk plant, laundry and ice plant.

The plant is located on a navigable river and on the lines of the Kanawha and Michigan Railway, and is in the natural gas and coal belt. There are large stocks of mechanical supplies, chemicals and commissary supplies and a river fleet consisting of a steamer, derrick boat, barges, etc.

INFORMATION CONCERNING THE PLANT AND FACILITIES and TERMS AND CONDITIONS OF THE SALE may be obtained upon application to I. H. Francis, Chairman, Ordnance District Salvage Board, 1710 Market Street, Philadelphia, Pa., or to the Officer in Charge of the Plant at Nitro, W. Va.