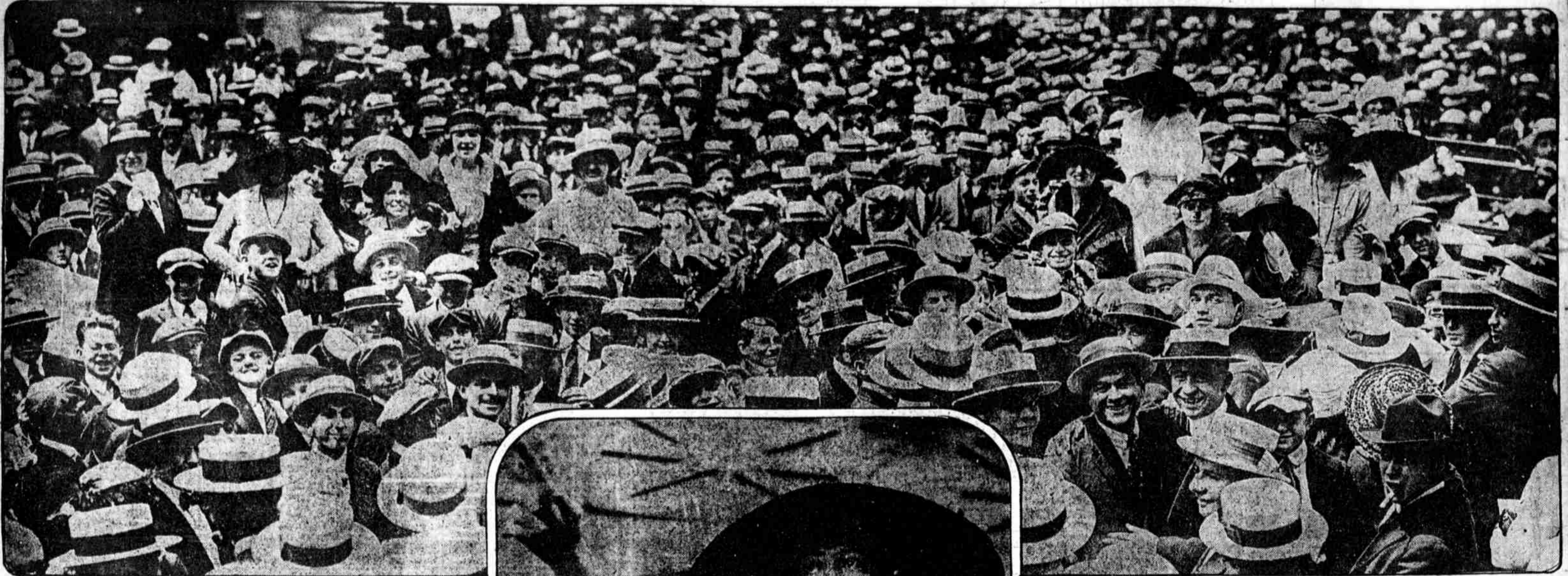


Wearers of Sock and Buskin Enact a Realistic Walkout and Appear in Striking Roles



EXPLAINING THE striking actors' cause in New York's financial district; a noon-hour rally of the Actors' Equity Association in Wall street.



KATE CLAXTON (Mrs. Charles A. Stevenson), whose stage career recalls the days of Augustin Daly and A. M. Palmer, and who is remembered by veteran playgoers as Louise in "The Two Orphans," is here urging the striking actors' cause at Broadway and Forty-fifth street.



ETHEL BARRYMORE (Mrs. Russell G. Colt), telling the Actors' Equity Association that she and "the entire Barrymore family" are with them "heart and soul," and that they are going to win "because their cause was just."



GLADYS LEE, of upper Broadway, held her street-corner audience from start to finish with perfect ease.



READY TO sweep the Producing Managers' Association off Broadway. The fair Amazons are Lillian Crossman, Mary Carter and Dorothy Allen.



WIN WITH Ed Wynn. The well-known orator from Philadelphia and leading strike leader giving his followers a dispassionate elucidation of the anti-trust laws. With him is Billie Farrell, of the Rialto.



SANDWICH LADIES, members of the Chorus Girls' Branch of the Actors' Equity Association, who wish the public distinctly to understand that they are not striking for more money. "Because we are not. We are asking the managers to let us organize as they are organized. We are not fighting for a 'closed shop'—we are only fighting for our rights."

By Ledger Photo Service