

Rain Damaged Wheat Field: Seaplane Carries Overland-Mail: Berlin Food Center Stormed



PHOTO BY LEDGER PHOTO SERVICE



PHOTO BY LEDGER PHOTO SERVICE

SPROUTS on cut wheat have reached a length of more than two and a half inches on the Maurice Dickinson farm, in Marple township, and the stacks look green instead of brown.



RAIN-SOAKED field in Delaware county of cut and bound wheat which was ready to take into the barns when the rain spell started on St. Swithin's day. The stacks have started to sprout, and little of the wheat can be saved even for cattle feed.



PHOTO I.F.S.

Eamonn De Valera, "president of the Irish Republic," greeting the Rev. Dr. McCabe, of St. Paul's University, after that institution had conferred upon him a high honorary degree.



MISS LILLIAN ALFORD, one of the exhibitors at the Islip (N. Y.) Polo Club's horse show.



© U. S. U.

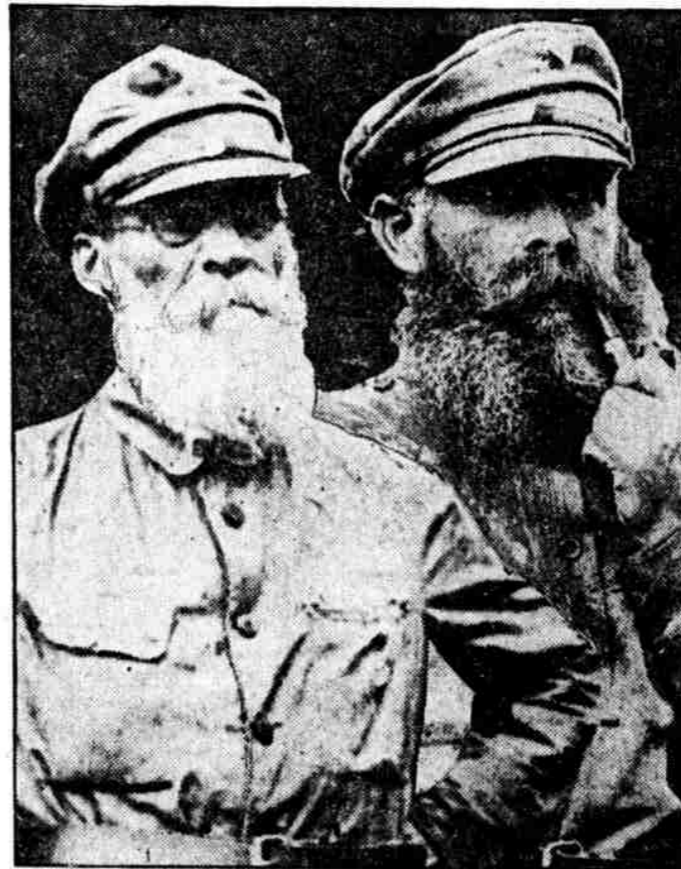


PHOTO I.F.S.

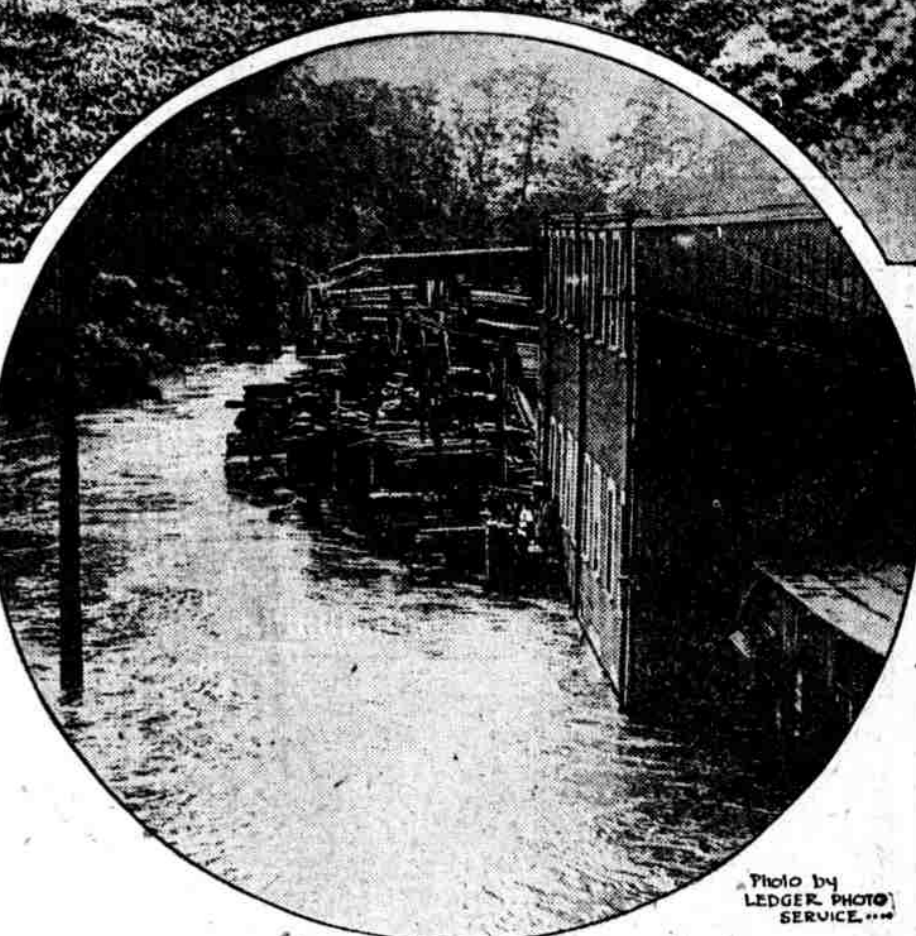


PHOTO BY LEDGER PHOTO SERVICE

CZECH VETERANS of the Siberian front who passed through Washington on their way home to Bohemia. Both men are over seventy years of age.



BY THE TURBULENT waters of Cobb's Creek, at Sixty-third and Market streets. Incessant rain has turned the picturesque little stream into a torrent, flooding the banks and surrounding fields.

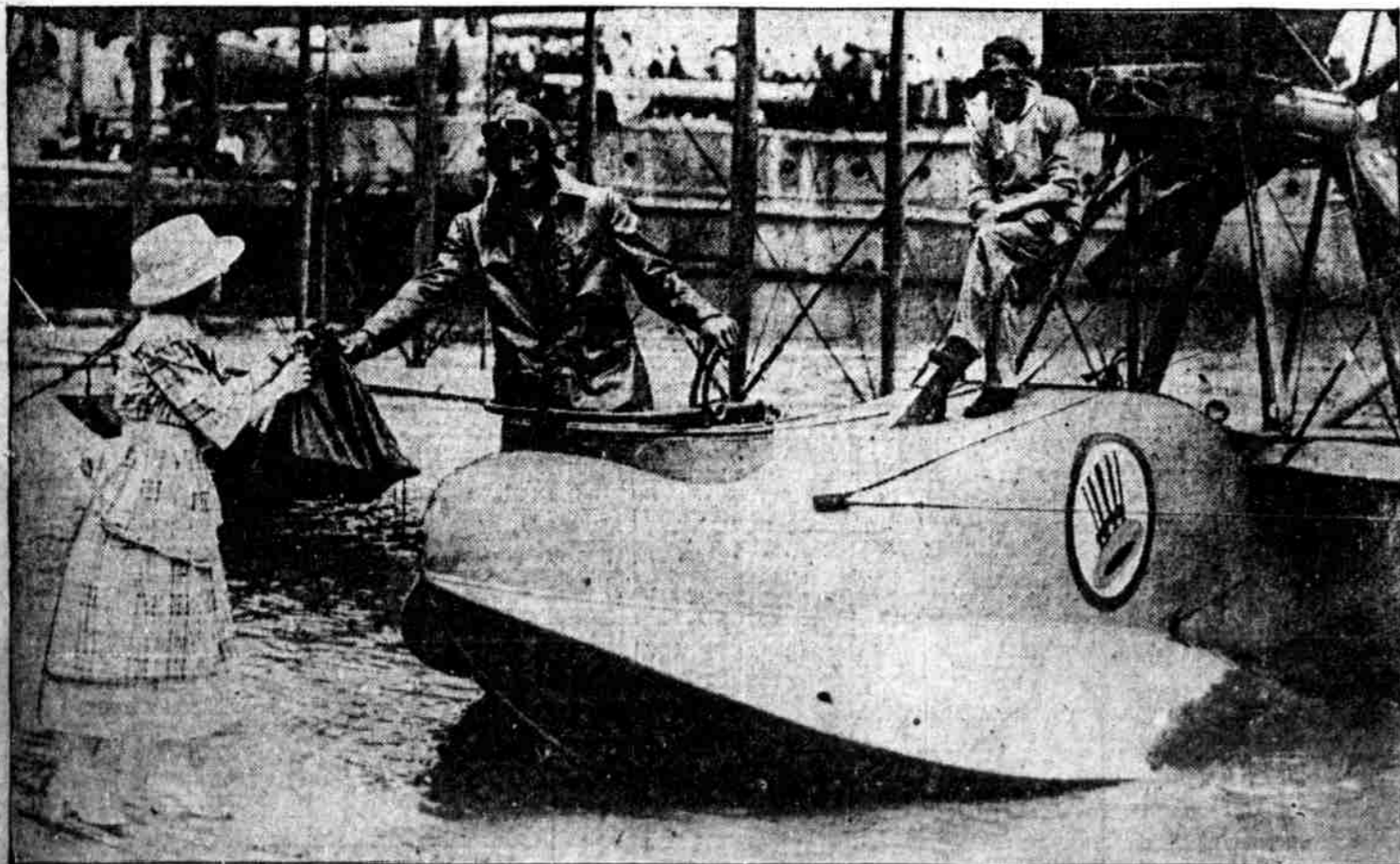


PHOTO BY W. N. S.

THE FIRST SEAPLANE to carry aerial mail about to start from St. Louis to Chicago, with Lieutenant Stanley, the pilot, ready to stow aboard the bag of mail. Although many aerial routes are traversed by land planes, this is the first-known instance of a seaplane to do this work.



© U. S. U.

THE SIGHT of appetizing delicacies in this store in the Invalidenstrasse proved too much for hungry Berliners. The place was raided, and the mob made a quick getaway with quantities of food before the arrival of armed guards.