

Submarine Hunters at League Island : Seaplanes at Memphis Levee : Rainy Season Scenes



FASHION CAMERA PHOTO

A HAT in taupe straw, the only trimming being the feather encircling the brim.



Photo I.F.S.

MRS. HAMILTON WILKES CARY, of New York, who was married in Paris to Baron Emil de Cartier de Marchienne, Belgian minister to the United States.

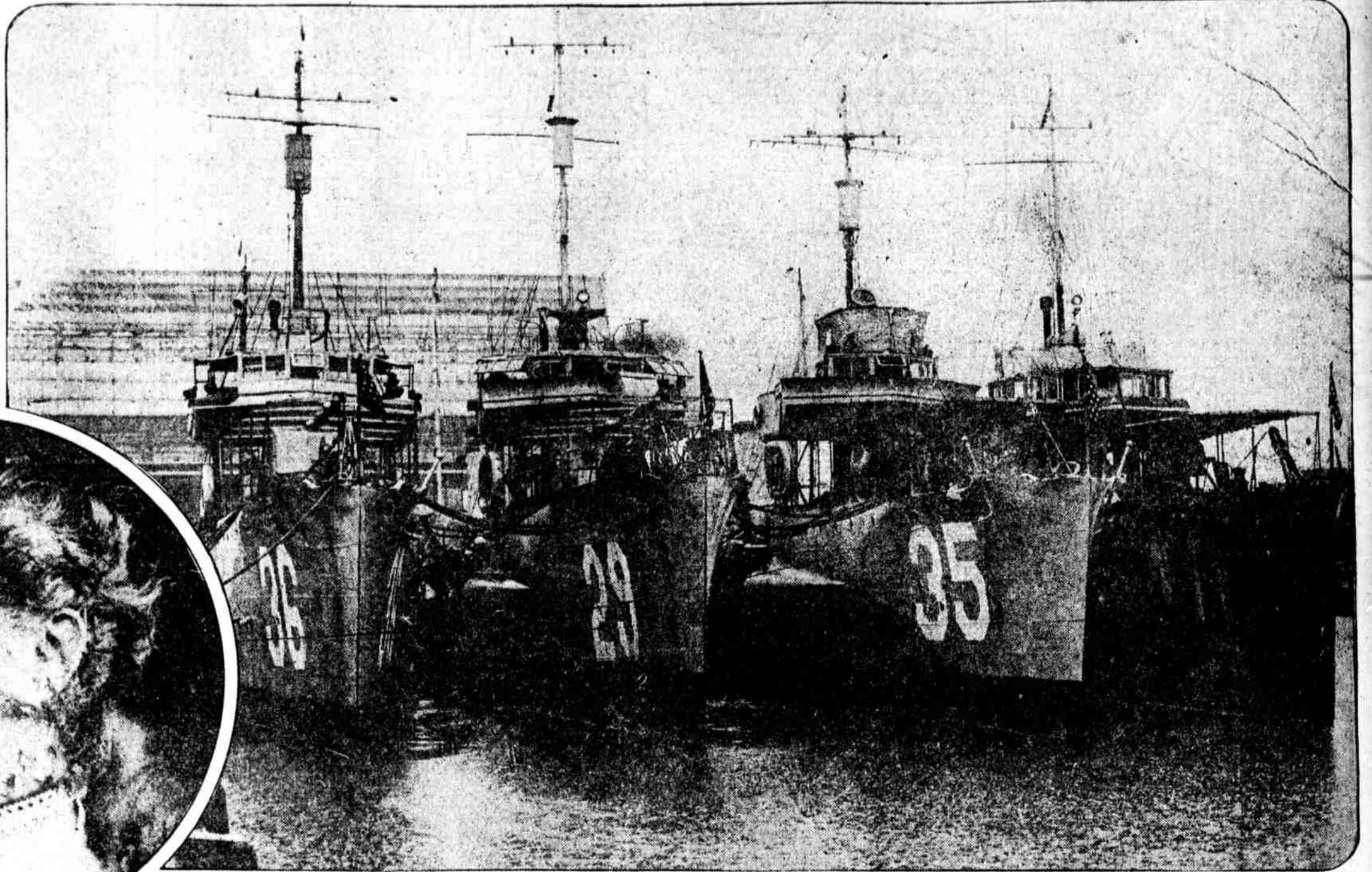


Photo by LEDGER PHOTO SERVICE

DESTROYERS HOME FROM WAR. The Patterson, Burrows, Ammon and Beale arrivals at the Philadelphia navy yard. The Patterson and Beale were the flagships of the fifth hunt squadron during the war. The destroyers are the first of a flotilla of twenty vessels due at this port.

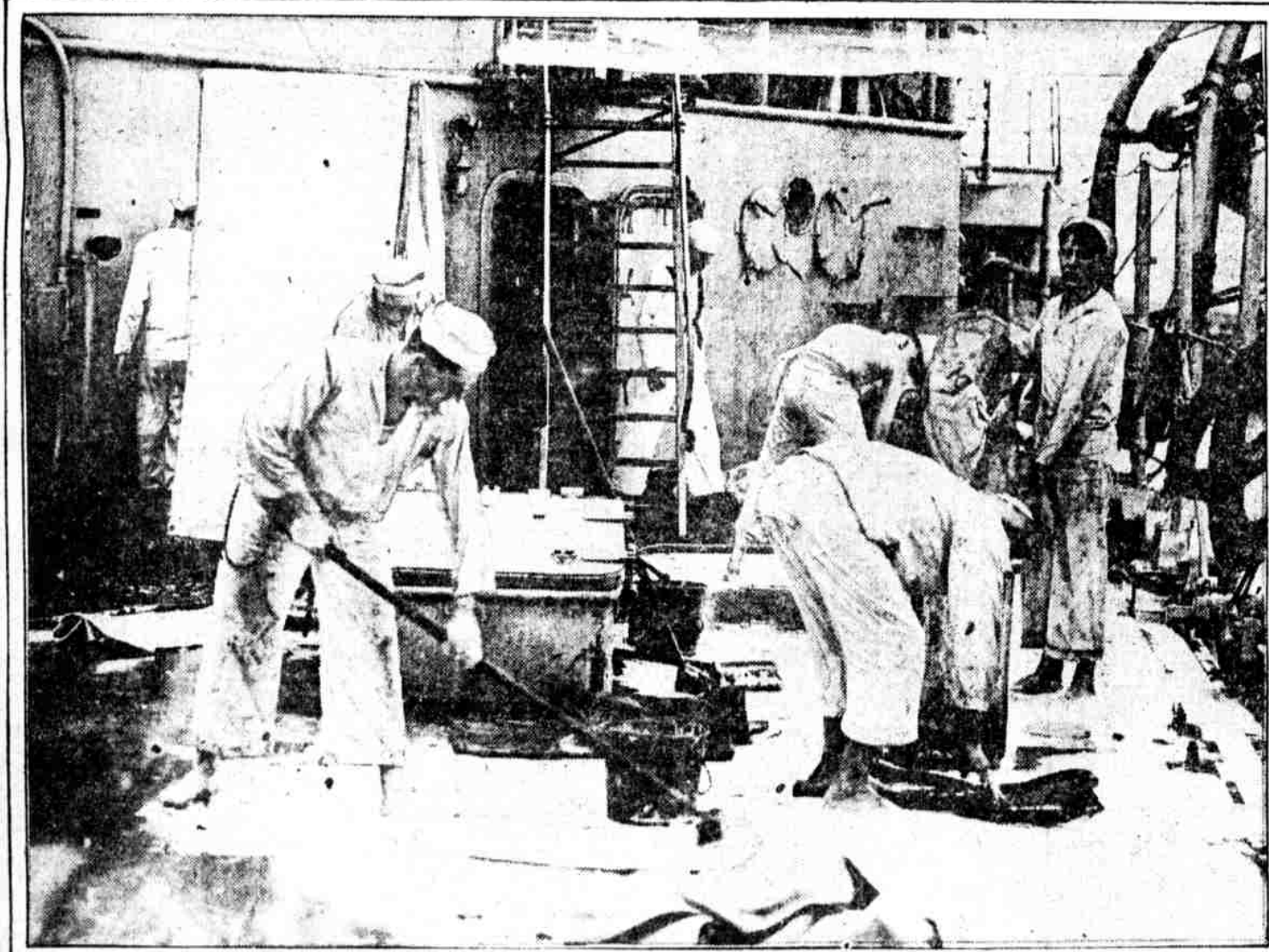


Photo by LEDGER PHOTO SERVICE

JACKIES SCRUBBING HAMMOCKS on the St. Louis. The first-class cruiser steamed up the Delaware river after traveling 40,000 miles in six months. The St. Louis left Honolulu a few days after war was declared and has been on convoy and cruising service ever since.

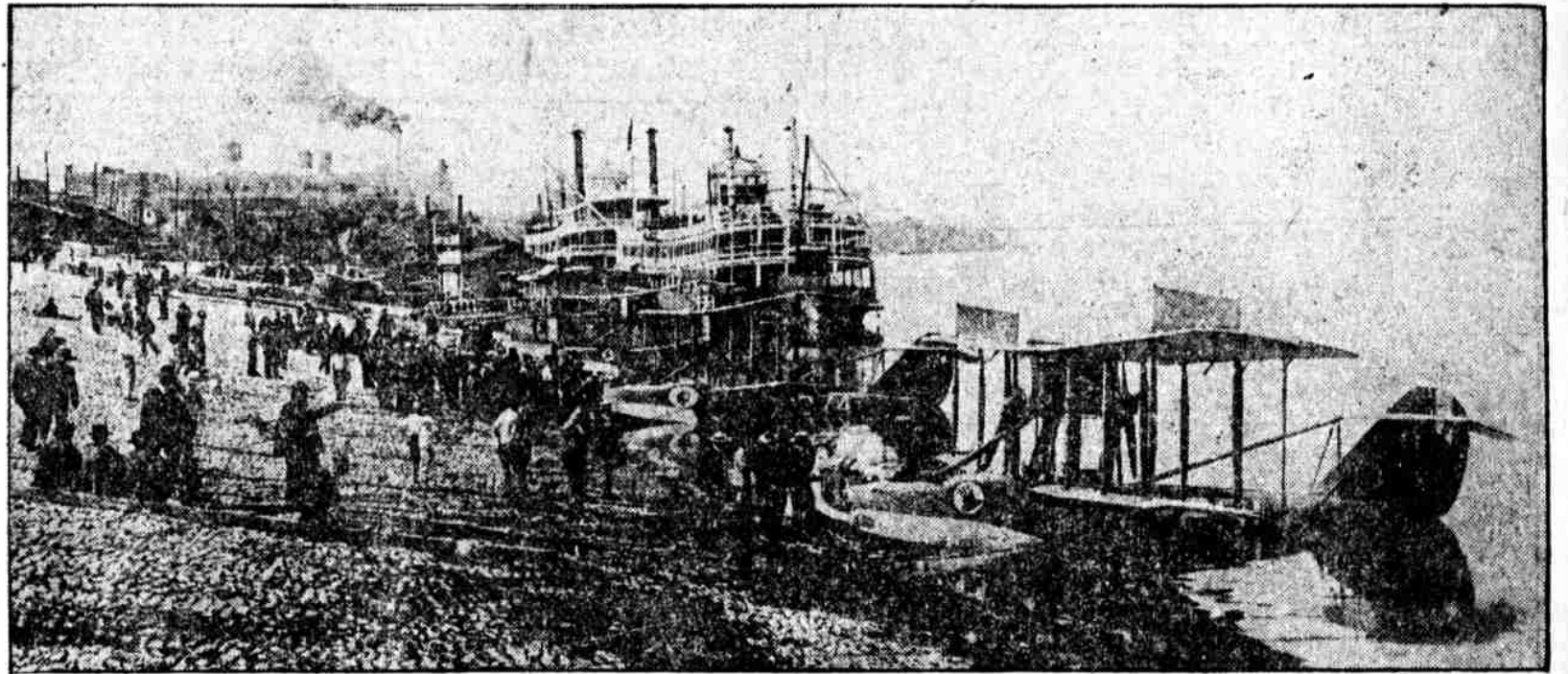


Photo by LEDGER PHOTO SERVICE

THE FIRST NAVY SEAPLANES to fly up the Mississippi river moored at the levee at Memphis, Tenn. The planes accompanied the United States navy educational and recruiting flotilla, which recently traveled up the Mississippi to St. Louis.



Photo by LEDGER PHOTO SERVICE



Photo by LEDGER PHOTO SERVICE

"FOR THE RAIN IT RAINETH EVERY DAY." DANK AND DREARY VIEWS OF PHILADELPHIANS AND UMBRELLAS DURING THE RAINY SEASON IN THE RUTHLESS REIGN OF JUPITER PLUVIUS, JULY, 1919.