

FIVE CONVENTIONS FOR ASBURY PARK

Guarantee Club, Institute of Homeopathy, "Old Guard" and Elks to Meet There

GOLF LINKS OPEN JULY 4

Asbury Park, N. J., June 11.—Members of the Reformed Church were in session here at the 100th annual synod of the Reformed Church of America last week.

While not booked as a convention, the next notable gathering in Asbury Park will be the visit of 800 members of the Guarantee Club, of the Guarantee Trust Company of New York, who will come to the new Monterey Hotel, for an outing, June 14.

Elks to Meet June 19 Preparations are complete for the entertainment of the New Jersey Elks here June 19 and 20. The meeting is an annual state convention of the Elks, which is held at Asbury Park.

Having acquired the 200 acre farm fronting Shuck river, at a golf course and recreation block, the city has now turned its attention toward the acquisition of twenty acres of ground comprising the present golf course.

Golf Course Ready July 4 Great progress is being made in the golf grounds, with every measure given by golf architects that nine holes of the eighteen-hole course will be ready for play July Fourth.

SUMMER RESORTS FINE BEACH, N. J.

Don't Miss This Opportunity BUY NOW WHILE YOU CAN 25x125 ft. Lots in Pine Beach N. J.

Pine Beach N. J. Well Situated \$90 up Home Sites, CASH EASY TERMS

Pine Beach, the most beautiful and healthful resort along the New Jersey coast, only 53 miles from Philadelphia, midway between New York and Atlantic City.

Buy and build a bungalow, arrangements can be made to finance building.

SUMMER RESORTS ASBURY PARK, N. J.

"A MODERN HOTEL BY THE SEA" HOTEL Columbia AND COTTAGES ASBURY PARK, N. J.

THE PRINCETON HOTEL AVALON, N. J. Avalon's New and Finest Hotel—Modern Throughout

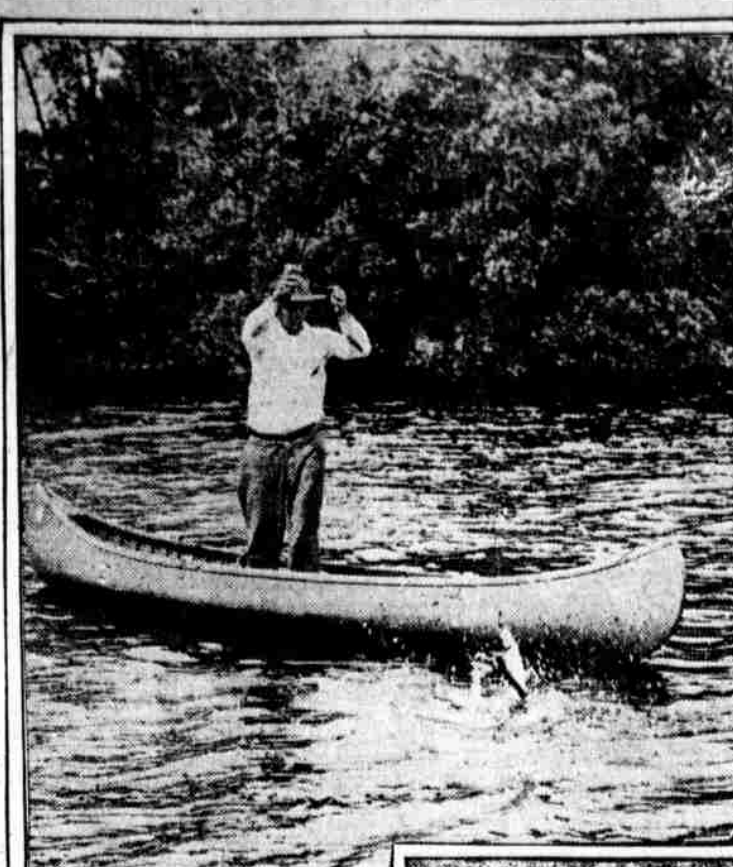
Hot and Cold Running Water in Each Room. Rooms Single and En Suite, With or Without Private Bath

White Service Throughout. Special Rates for the Season. UNDER THE PERSONAL DIRECTION OF A. L. KLINE, Owner

STONE HARBOR, N. J. Shelter Haven Hotel Open Year Round. Largest and Finest Hotel American and European Plan

Rooms Single or En Suite, with or without Private Bath. Roof Garden and Grill. Music, Dancing—Special Service Rates

SUMMER SEASON OPENS JUNE 14, 1919 Under the Personal Direction of A. L. KLINE



Fishing—Nothing like the burly bass for a fight

are now repairing the banks and traps and smoothing the putting greens, while others are making the big clubhouse ready for use.

Trout stream

Quirrh Mountains This is the beautiful range of mountains that skirts the western shores of Great Salt Lake and extends north and south parallel with the Wasatch mountains.

SUMMER RESORTS BAY HEAD, N. J.

THE BLUFFS BAYHEAD, N. J. Directly on the Beach Open June 19 to Oct. 1

BOOKLET A. E. Johnson

THE GRENVILLE ARMS Bayhead, N. J. MISS L. BURRUS

BELLEVUE Bayhead, N. J. NOW OPEN Mrs. Grimstead, Mgr.

WILDWOOD, N. J. Wildwood Manor Capacity 400; whole block; ocean front; fresh and salt water in bath; running water; hot and cold water; electric elevators; tennis courts, etc.

Arcadia Combines shore and country. Macgregor & Fox, 100 cap. All outside rooms. Booklet, Mrs. F. D. Maxwell.

Douglas Pine and Atlantic; ocean-view rooms; one square from beach. CAPE MAY, N. J.

THE BALTIMORE INN OPENS JUNE 1ST. CLOSE TO BEACH. MISS HARRISON.

NEW STOCKTON VILLA Directly on Beach. Private bath. Reasonably low terms. S. S. DAVIS.

SPRING LAKE BEACH, N. J. ON THE OCEAN SPRING LAKE BEACH, N. J.

THE WARREN ON THE OCEAN SPRING LAKE BEACH, N. J.

THE BREAKERS On the Ocean, Spring Lake Beach

THE SHOREHAM E. E. SHANGEN-BURG, Prop.

POINT PLEASANT, N. J. PINE BLUFF INN Under new management.

BRYANT VILLA, Lake Hopatcong

BEACH HAVEN, N. J. The Breakers Children's garden; bathing

BAR HARBOR MECCA OF MAINE TOURISTS

Cluster of Camps and Log Cabins Tucked Away on Shores of Six Lakes

PRINCELY SUMMER ESTATES

Bar Harbor, June 11.—A place of princely summer estates, largely private homes, but having also many commodious and well appointed hotels, is Bar Harbor.

Returning to the inland retreats, Maine's big resorts start with Poland Spring, which is situated but a comparatively short distance from Portland.

POINT PLEASANT, N. J. Picturesque POINT PLEASANT Surrounded by Water COOLEST SPOT ON JERSEY COAST

Situated at the confluence of the Manasquan River and Atlantic Ocean, at the head of Barnegat Bay and in New Jersey's famous pine belt, Point Pleasant is an ideal place to bring up your children.

THE CARROLLTON HOTEL Point Pleasant, N. J.

ISLAND HEIGHTS, N. J. ISLAND HEIGHTS, N. J. Maple Inn ISLAND HEIGHTS, N. J.

Parker House ASBURY PARK, N. J. Phone 704

HOTEL FRANKLIN House of Hospitality

HOTEL KENTUCKY 304 First Avenue ASBURY PARK, N. J.

THE NEW OCEAN HOTEL On the European Plan Finest on the North Jersey Coast.

CHATELAINE Asbury Park, N. J. 216 THIRD AVENUE

ESSEX & SUSSEX Hotel and Cottages Spring Lake Beach, N. J.

THE WARREN ON THE OCEAN SPRING LAKE BEACH, N. J.

THE ALLAIRE SPRING LAKE BEACH, N. J. Directly on Beach.

THE SHOREHAM E. E. SHANGEN-BURG, Prop.

THE QUEEN 1 Ocean Parkway, on Ocean Front OCEAN GROVE, N. J.

OCEAN HOUSE 72 Main Avenue Ocean Grove, N. J.

HOTEL MAJESTIC DIRECTLY ON THE BEACH

THE SPRAY VIEW Directly facing ocean view from all rooms.

ELDORADO HOTEL At Beach, Facing Lake. A. W. Grudin, Prop.

STOKES HALL and cold running water; private bath; electric range; owner's special service.

THE NATIONAL 50 Main Ave. J. A. MERRY.

bodies of fresh water, in the Mt. Kinross House, having accommodations for 500 or more guests.

Among the most noted lakes in Maine are the Rangelys, six in number, and they receive their prominence because they abound with salmon and trout.

The Mountain View House is at Mountain View, the Bald Mountain Lodge at Bald Mountain, Interlaken Camp at Rangely, Moosehookmead House and Log Cabins at Haines Land.

SUMMER RESORTS BELMAR, N. J.

NEW JERSEY Midway between New York and Atlantic City Catering to the Best Clientel

THE COLUMBIA HOTEL Modern in Every Detail. A Whole Block on

SUMMER RESORTS POINT PLEASANT, N. J.

ASBURY PARK, N. J. NEW MONTEREY HOTEL

THE LESLIE ASBURY PARK, N. J. 406 Fifth Ave.

HOTEL ALBION NEW ONE OF THE MOST MODERN HOTELS ON OCEAN GROVE

MONTAUK HOTEL Corner 1st Ave. and Bond St.

ASBURY PARK, N. J. Phone 704

HOTEL FRANKLIN House of Hospitality

HOTEL KENTUCKY 304 First Avenue ASBURY PARK, N. J.

THE NEW OCEAN HOTEL On the European Plan Finest on the North Jersey Coast.

CHATELAINE Asbury Park, N. J. 216 THIRD AVENUE

ESSEX & SUSSEX Hotel and Cottages Spring Lake Beach, N. J.

THE WARREN ON THE OCEAN SPRING LAKE BEACH, N. J.

THE ALLAIRE SPRING LAKE BEACH, N. J. Directly on Beach.

THE SHOREHAM E. E. SHANGEN-BURG, Prop.

THE QUEEN 1 Ocean Parkway, on Ocean Front OCEAN GROVE, N. J.

OCEAN HOUSE 72 Main Avenue Ocean Grove, N. J.

HOTEL MAJESTIC DIRECTLY ON THE BEACH

THE SPRAY VIEW Directly facing ocean view from all rooms.

ELDORADO HOTEL At Beach, Facing Lake. A. W. Grudin, Prop.

STOKES HALL and cold running water; private bath; electric range; owner's special service.

THE NATIONAL 50 Main Ave. J. A. MERRY.

Looking at the Bright Side "Old Lute Lathers is a great fellow

to always look on the bright side of things," said the gaunt Missourian. "He was riding to town on a load of hay with his son-in-law the other day when the roads were so muddy.

Natural Salt Beds At the extreme western edge of Utah, very near to the Nevada line, are the natural salt beds, sixty miles long, eight miles wide, one to fifteen feet thick, and 98 per cent pure.

SUMMER RESORTS BELMAR, N. J.

NEW JERSEY Midway between New York and Atlantic City Catering to the Best Clientel

THE COLUMBIA HOTEL Modern in Every Detail. A Whole Block on

SUMMER RESORTS POINT PLEASANT, N. J.

ASBURY PARK, N. J. NEW MONTEREY HOTEL

THE LESLIE ASBURY PARK, N. J. 406 Fifth Ave.

HOTEL ALBION NEW ONE OF THE MOST MODERN HOTELS ON OCEAN GROVE

MONTAUK HOTEL Corner 1st Ave. and Bond St.

ASBURY PARK, N. J. Phone 704

HOTEL FRANKLIN House of Hospitality

HOTEL KENTUCKY 304 First Avenue ASBURY PARK, N. J.

THE NEW OCEAN HOTEL On the European Plan Finest on the North Jersey Coast.

CHATELAINE Asbury Park, N. J. 216 THIRD AVENUE

ESSEX & SUSSEX Hotel and Cottages Spring Lake Beach, N. J.

THE WARREN ON THE OCEAN SPRING LAKE BEACH, N. J.

THE ALLAIRE SPRING LAKE BEACH, N. J. Directly on Beach.

THE SHOREHAM E. E. SHANGEN-BURG, Prop.

THE QUEEN 1 Ocean Parkway, on Ocean Front OCEAN GROVE, N. J.

OCEAN HOUSE 72 Main Avenue Ocean Grove, N. J.

HOTEL MAJESTIC DIRECTLY ON THE BEACH

THE SPRAY VIEW Directly facing ocean view from all rooms.

ELDORADO HOTEL At Beach, Facing Lake. A. W. Grudin, Prop.

STOKES HALL and cold running water; private bath; electric range; owner's special service.

THE NATIONAL 50 Main Ave. J. A. MERRY.

SUMMER RESORTS ASBURY PARK, N. J.

FOR YOUR NEXT WEEK-END

There is a freshness and charm in these opening days of summer at the seashore and plenty of entertainment; two miles of boardwalk promenade; numerous gay grills, tea rooms, theatres and interesting shops; ocean bathing, golf, tennis, sailing, automobiling through wonderful rolling back country; many hotels, luxurious and moderate priced ones, with rates to suit all.

Asbury Park Write City Publicity Bureau for Literature and Other Information.

HOTEL BRUNSWICK DIRECTLY ON THE BEACH

NOTED FOR ITS HIGH STANDARD OF EXCELLENCE, ROOMS EN SUITE, WITH PRIVATE BATHS, RUNNING WATER IN EVERY ROOM, SUPERIOR COOKING, PROMPT AND EFFICIENT SERVICE.

MORGAN & PARSONS

PLAZA HOTEL and GRILL ON OCEAN FRONT

Headquarters for Auto Tourists Shore Dinners a Specialty

Only European Hotel on Ocean Front \$2.00 Per Day. \$12.00 Up Weekly

JAS. KELSEY, Proprietor

THE METROPOLITAN ASBURY PARK

Motor Here for This Week-End—90 Miles Finest Roads

Luxurious suites. Private baths. Running water in all rooms. Music.

O. & M. J. NORWOOD

HOTEL KENTUCKY 304 First Avenue ASBURY PARK, N. J.

Situated within 1 1/2 blocks of beach, bathing and all amusements, also adjacent to beautiful park, large airy apartment

M. P. KRAFT Proprietor and Owner.

THE NEW OCEAN HOTEL On the European Plan Finest on the North Jersey Coast.

CHATELAINE Asbury Park, N. J. 216 THIRD AVENUE

ESSEX & SUSSEX Hotel and Cottages Spring Lake Beach, N. J.

THE WARREN ON THE OCEAN SPRING LAKE BEACH, N. J.

THE ALLAIRE SPRING LAKE BEACH, N. J. Directly on Beach.

THE SHOREHAM E. E. SHANGEN-BURG, Prop.

THE QUEEN 1 Ocean Parkway, on Ocean Front OCEAN GROVE, N. J.

OCEAN HOUSE 72 Main Avenue Ocean Grove, N. J.

HOTEL MAJESTIC DIRECTLY ON THE BEACH

THE SPRAY VIEW Directly facing ocean view from all rooms.

ELDORADO HOTEL At Beach, Facing Lake. A. W. Grudin, Prop.

STOKES HALL and cold running water; private bath; electric range; owner's special service.

THE NATIONAL 50 Main Ave. J. A. MERRY.

SUMMER RESORTS ASBURY PARK, N. J.

Social Centers of the "Jersey Coast"

Whole square on the ocean. European and American plan. Open all year. Capacity, 350. Special accommodations for automobilists.

A. M. SEXTON, Prop.

Marlborough Hotel

Leading all-year hotel. In best residential section. Central to all attractions.

HAROLD W. SEXTON, Mgr. Booklets.

STEINBACH COMPANY The Largest Resort Store in the World

ASBURY PARK, N. J.

EASTONIA 220 4th Ave., Near Beach

Excellent Cuisine, White Service. Apply for rates. E. STOFFLET.

The Alameda 207 Seventh Ave.

Half block to the ocean; refined patronage; reasonable. F. A. SHEPHERD

BRENTWOOD ASBURY PARK, N. J.—306 First Ave.

beach, two blocks from ocean, Natatorium and principal attractions; exclusive section all home comforts; large piazza; large outside rooms; most with ocean view; home cooking; first-class table beautifully supplied everything fresh in season. Capacity 500. Rates reasonable. Hotel. SEYMOUR

THE MADISON Sunset ave. overlooking Ocean and Front Lake.

AUDITORIUM HOTEL 6th Ave. E. DODMAN HARK

New management. Ocean-front rooms; superior accommodations. M. L. WHITE

THE GIRARD 207 4th Ave. Cap. 120. Special June rates.

New Tenny Hotel 100 rooms, with running water in every room. Furnished entirely new. Booklet. Mrs. N. K. Tenny

New York City 4th Ave. Beach view. Cap. 100. Booklet. M. E. GATTELL

THE FLORIDA 300 Seventh Ave. N. Y. Cap. 150. Booklet. M. E. GATTELL

VICTORIA Third Avenue. Ocean view. Cap. 100. Booklet. M. E. GATTELL

The Zurich 912 Sixth Ave. Cap. 100. Booklet. M. E. GATTELL