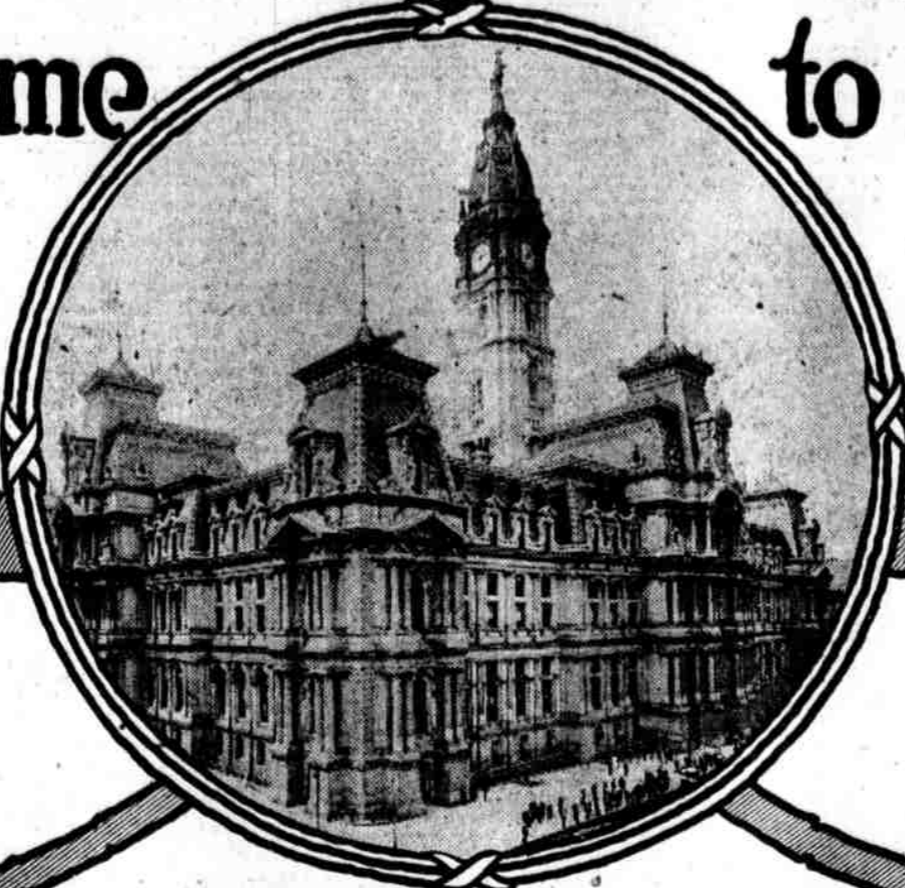


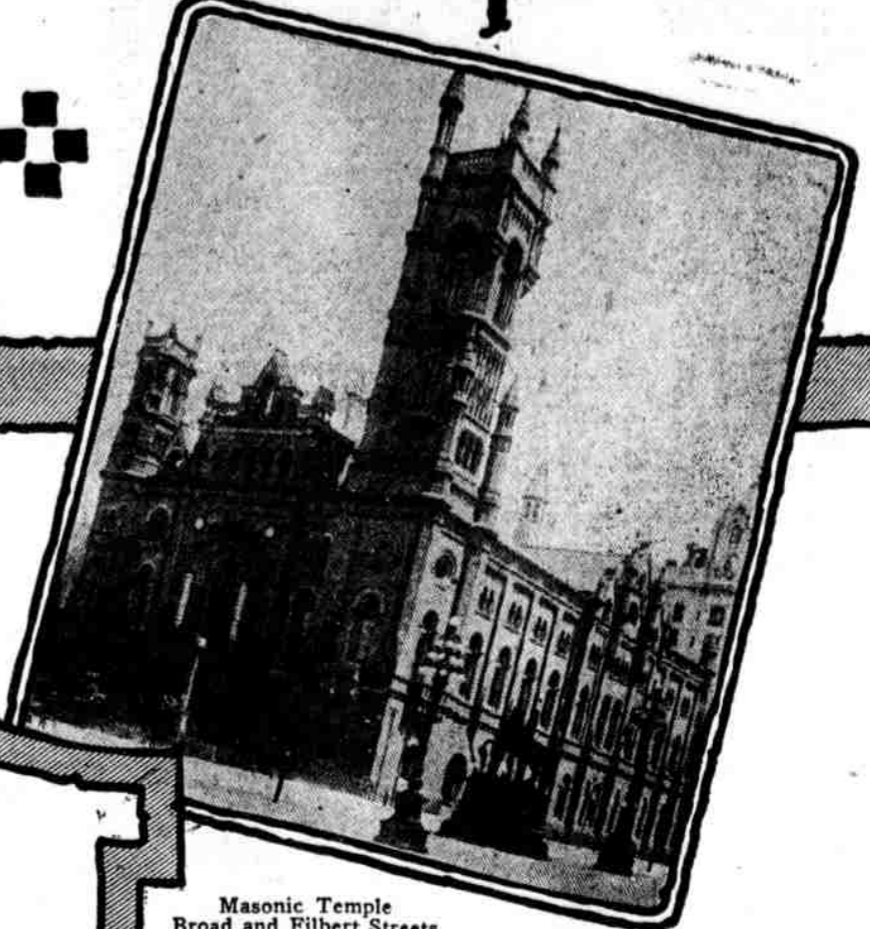
To Men of the Textile and Allied Industries a hearty welcome to Philadelphia



Independence Hall
Fifth and Sixth on
Chestnut Street



Philadelphia City Hall
Broad and Market Streets



Masonic Temple
Broad and Filbert Streets
Regarded as the finest
home of Masonry in
the world.

HERE, at the Philadelphia Commercial Museum, in the heart of the nation's great industrial center, during the coming two weeks, will be assembled the representatives and the displays of the industry which clothes many of the people of the earth.

Never before has been gathered together such an imposing exhibit to give eloquent testimony to the progress of the textile industry and its relatives.

There will be shown the manufacturing methods that enable such magnitude and quality of textile production in all its various processes—a veritable education for those who wish to avail themselves of the opportunity.

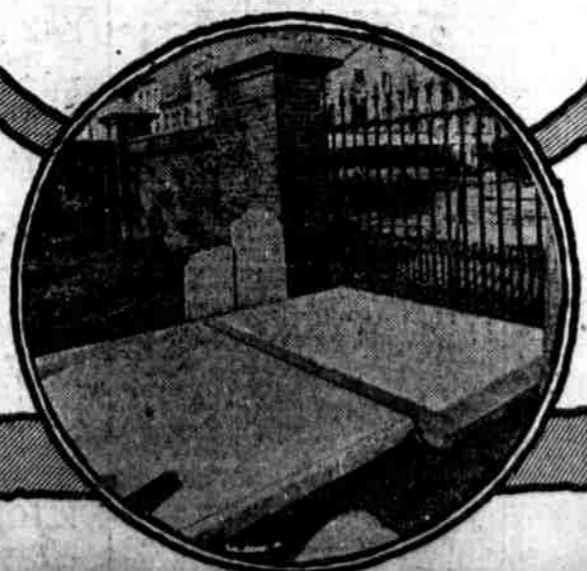
Every one likes to watch the "wheels go round" — and many and varied will be the wheels turning to produce, right at the Hosiery and Knit Goods Exposition, the articles surrounding the making of which there is an alluring mystery.

But stop and think. These millions of wheels that make your hosiery, underwear, shirts, waists, neckwear, table and bed linen, to say nothing of all the parts of your other articles of apparel—how long would they remain productive without proper oiling—lubrication—the prevention of wear of all things movable?

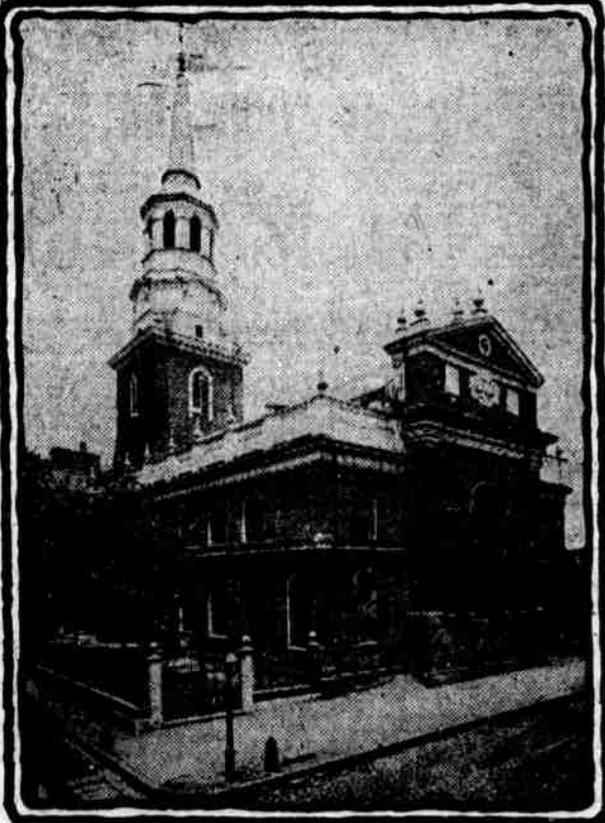
The Crew Levick Company, manufacturers of lubricants for all purposes since 1862, will have one of the most interesting exhibits at the show. See it—remember booths 361-370—and talk with the Engineers in charge, who have made a lifetime study of the problem of lubrication.

We welcome you to Philadelphia and to the Exposition, and invite you to make our booths your headquarters at the Show.

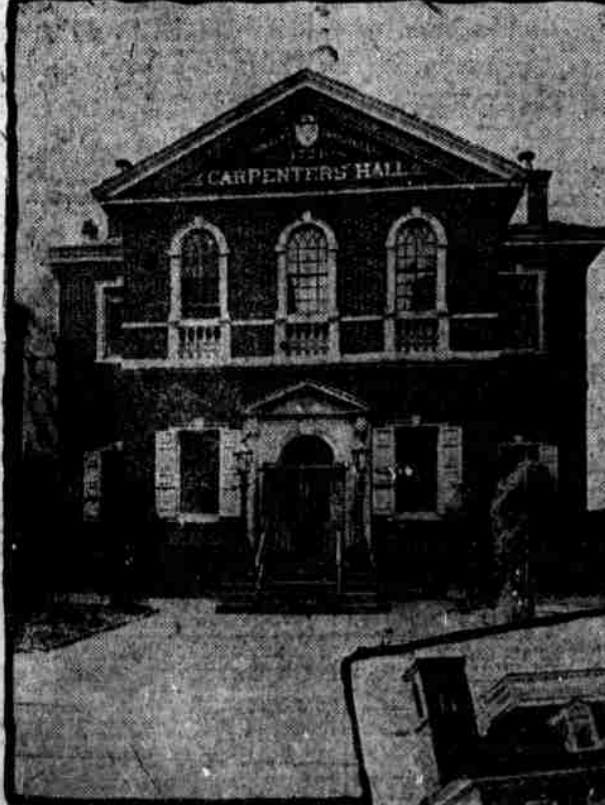
CREW LEVICK COMPANY
111 North Broad Street



Liberty Bell
Independence Hall
Sixth & Chestnut Sts.



Christ Church Second Street, North of Market
Washington, Benjamin Franklin and Robert Morris attended services here.



Carpenters' Hall
322 Chestnut Street
Where First Continental Congress met in 1774.



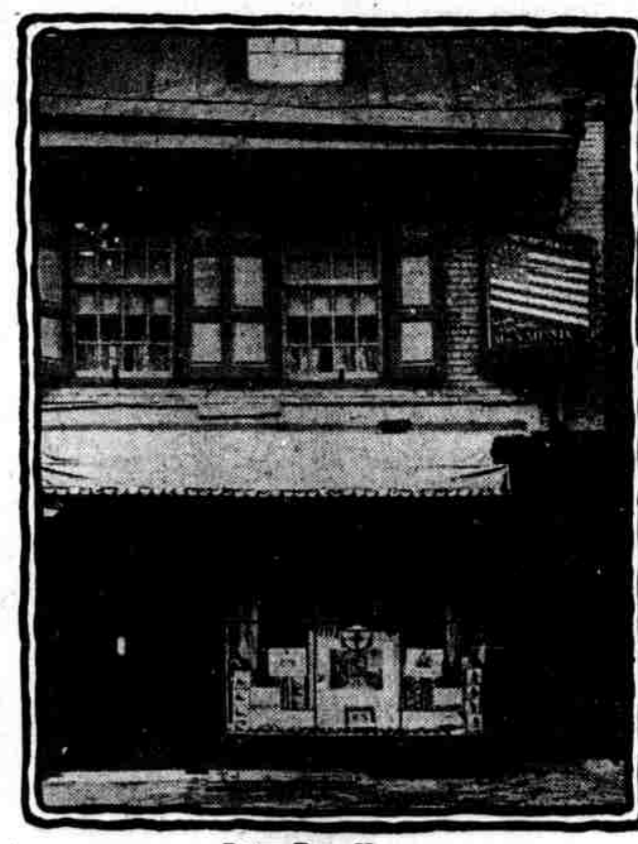
Betsy Ross House
Fairmount Park

Benjamin Franklin's Grave
Christ Church Burial Grounds
Southeast Corner Fifth and Arch Streets

Chew Mansion, Main and Johnson Streets
Harbored British Troops During Battle of Germantown, October 4, 1777.



Wm. Penn House, Fairmount Park



Betsy Ross House
Where first American Flag was made
239 Arch Street



U. S. Mint
17th and Spring Garden Sts.
Finest Mint in the World,
making two-thirds of our entire
coinage.

Welcome to Philadelphia

What to see.
How to get there.

- Academy of Natural Sciences—Nineteenth and Race streets, five squares west of Broad street and three squares north of Chestnut street.
- Academy of the Fine Arts—Broad and Cherry streets, on Broad street, about two squares north of Market street.
- Academy of Music—Broad and Locust streets, west side of Broad street, about one and one-half squares south of Chestnut street.
- Bank of North America—305 Chestnut street, oldest institution of its kind in America; eleven squares east of Broad, one square south of Market street.
- Betsy Ross House—Northeast side of Third and Arch streets, eleven squares east of Broad street and one square north of Market street.
- Baldwin's Locomotive Works—Broad and Spring Garden streets, on Broad street, five squares north of Market street.
- Bartram's Gardens—Located between Market and Chestnut streets, from Fourth to Fifth street, ten squares east of Broad street.
- Broad Street Station—Pennsylvania Railroad, West Penn square and Market street.
- COMMERCIAL MUSEUM—Reached from the center of the city by subway routes 11 and 37; on Walnut street routes 13 and 42; get off at 36th street, and walk south two squares.
- Congress Hall—Southeast corner Sixth and Chestnut streets, eight squares east of Broad street and one square south of Market street.
- Carpenters' Hall—322 Chestnut street, ten squares east of Broad street and one square south of Market street.
- Christ Church—Second above Market street, Erected 1695. Twelve squares east of Broad street. Take any car going east on Market street to Second street, walk north about half square.
- Fairmount Park—The oldest public park in the United States, 3000 acres. Contains the Zoological Garden, the old many historic monuments, buildings and the Park Trolley Line, starting from Dauphin street entrance.
- Franklin's Grave—In Christ Church Cemetery, Fifth and Arch streets, nine squares east of Broad street and one square north of Market street.
- Girard College—Girard and Corinthian avenues, twelve squares north of Market street and seven squares west of Thirteenth street. Take any car on Thirteenth street to Girard avenue. Take route No. 15 running west on Girard avenue to Corinthian avenue.
- Historical Society of Pennsylvania—At Thirteenth and Locust streets; one square east of Broad street, two and a half squares south of Market street.
- Independence Hall—Independence Square, Fifth and Sixth streets, Chestnut and Walnut streets, Fifth street is nine squares east of Broad street and Chestnut street is one square south of Market street.
- Manufacturers' Club—Broad and Walnut streets, on Broad street, two squares south of Market street.
- Mercantile Club—Broad street above Master street, on Broad street, fourteen squares north of Market street. Take any car running north on Thirteenth street, get off at Master street, walk one square west to Broad street.
- Mercantile Library—18 South Tenth street, four squares east of Broad street, about one-half square south of Market street.
- Memorial Hall—West Fairmount Park.
- Metropolitan Opera House—Broad and Poplar streets. Take any car on Thirteenth street, nine squares north of Market street to Poplar street, one square west to Broad street.
- Philadelphia and Reading Railroad Terminal—Twelfth and Market streets, on Market street, two squares east of Broad street.
- Museum of Science and Art of the U. of P.—At Thirty-third and Spruce streets. (Same directions as to Commercial Museum).
- Old Swedes' Church—South Swanson below Christian street. Take route 5 on Second street, nine squares south to Christian street. Swanson street is between Front street and Delaware avenue.
- United States Custom House—Chestnut street between Fourth and Fifth streets, one square south of Market street, ten squares east of Broad street.
- United States Mint—Spring Garden street from Sixteenth to Seventeenth street, five squares north of Market street, two squares west of Broad street.
- Union League—Broad street, Broad and Sansom streets, on Broad street, square and a half south of Market street.
- William Penn House—In Fairmount Park, at western end of Girard avenue.
- Willow Grove Park—A favorite pleasure resort, reached by the Reading Railroad, by No. 65 cars on Fifth street, No. 45 cars on Eleventh street or No. 24 cars on Sixteenth street. There are restaurants, scenic railways, moving pictures, an open-air auditorium where evening and afternoon band concerts are given.
- Zoological Garden—In Fairmount Park.
- Popular Shows now at Philadelphia's Leading Theatres
- GARRICK: Chestnut and Juniper D. W. Grimm presents "BROKEN BLOSSOMS"
- FORREST: Broad and Sansom "FIDDLERS THREE"
- BROAD: Broad and Locust David Belasco presents "THE BERRY BOSS" Week of June 2
- ADELPHI: Broad below Race Walker Whitehead in "THE LITTLE BROTHER"
- SAM S. SHUBERT THEATRE: Broad below Locust "OH, UNCLE"
- LYRIC: Broad above Arch Oliver Moroson presents Leo Carrillo In the sensational fun and fashion success LOMBARD, LTD. Week of June 2

CREW LEVICK CO.,
111 North Broad Street