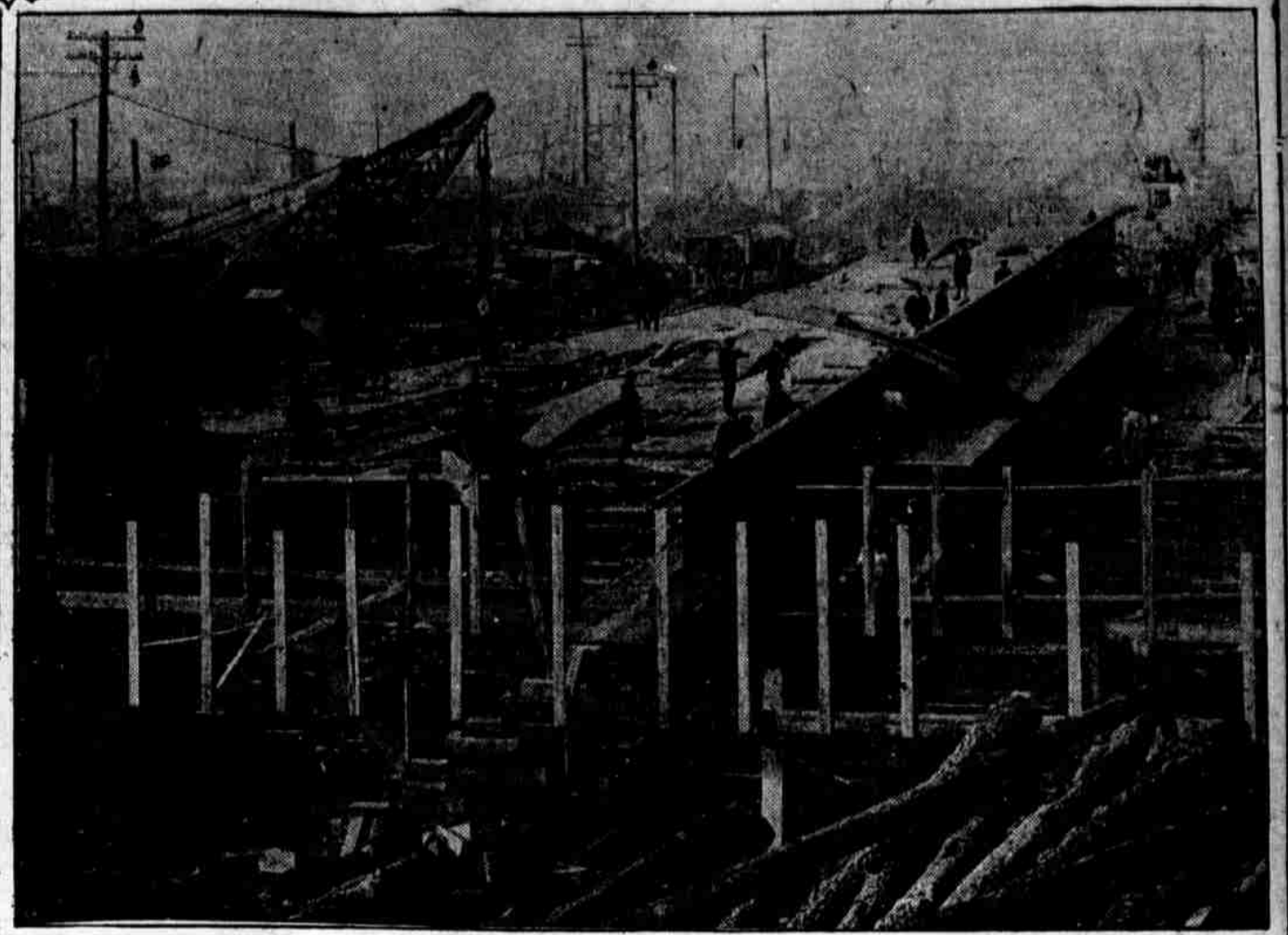
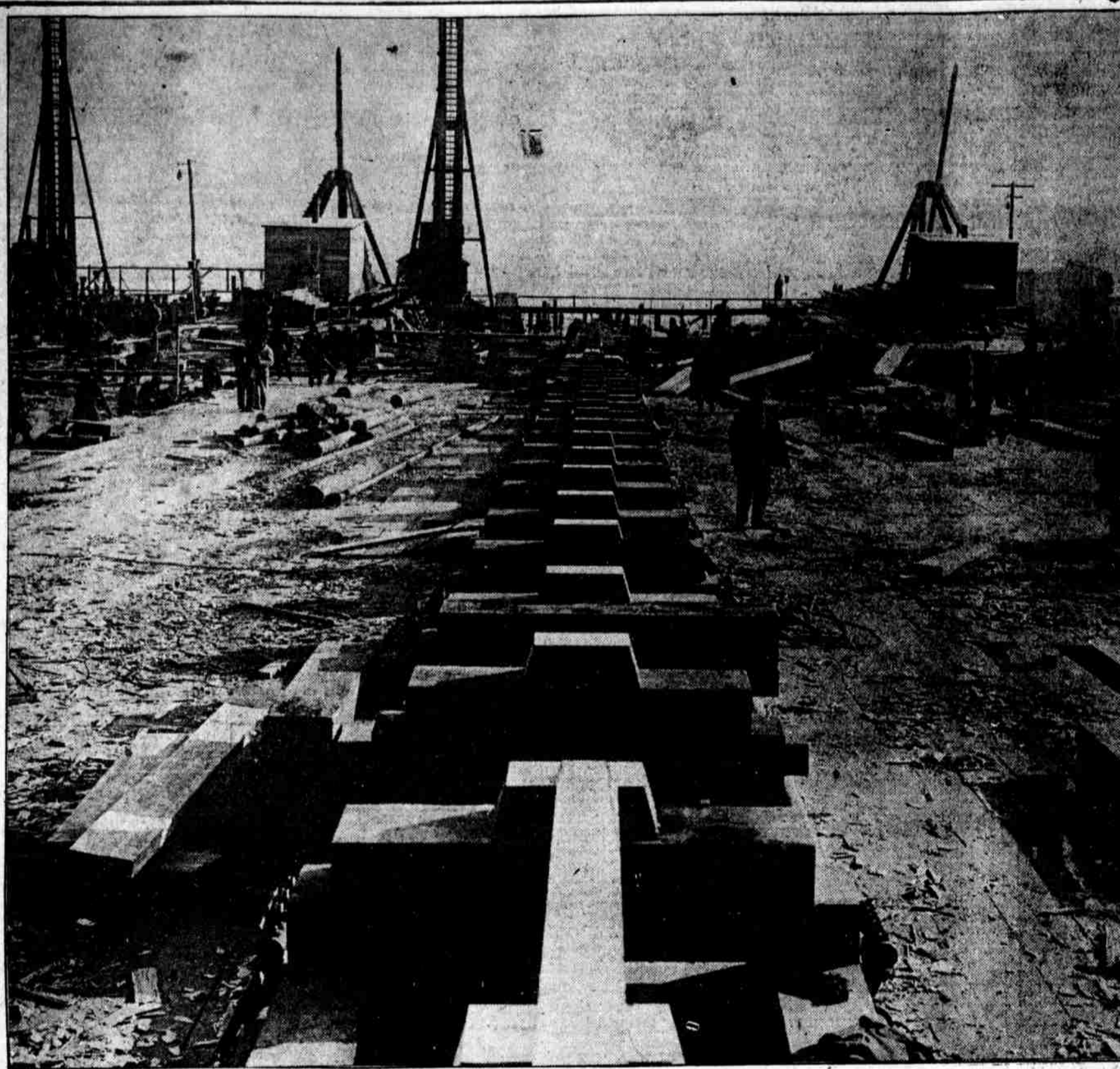
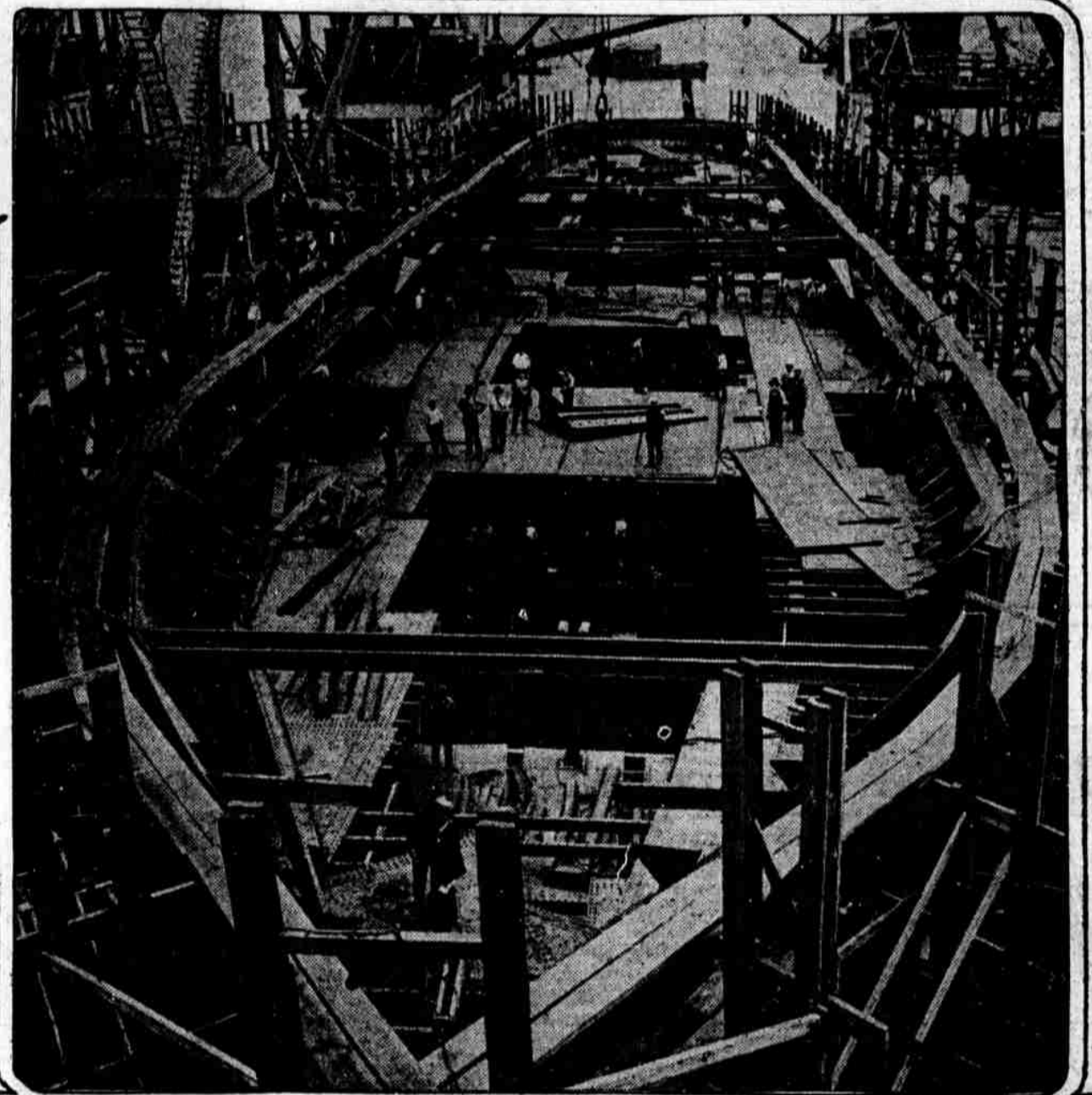


SHIPS ARE LEAVING THE WAYS AT HOG ISLAND SHIPYARD AT RATE OF ONE EVERY WEEK AND DELIVERIES BEING MADE ON AN AVERAGE OF 9 MONTHS FROM TIME KEELS ARE LAID

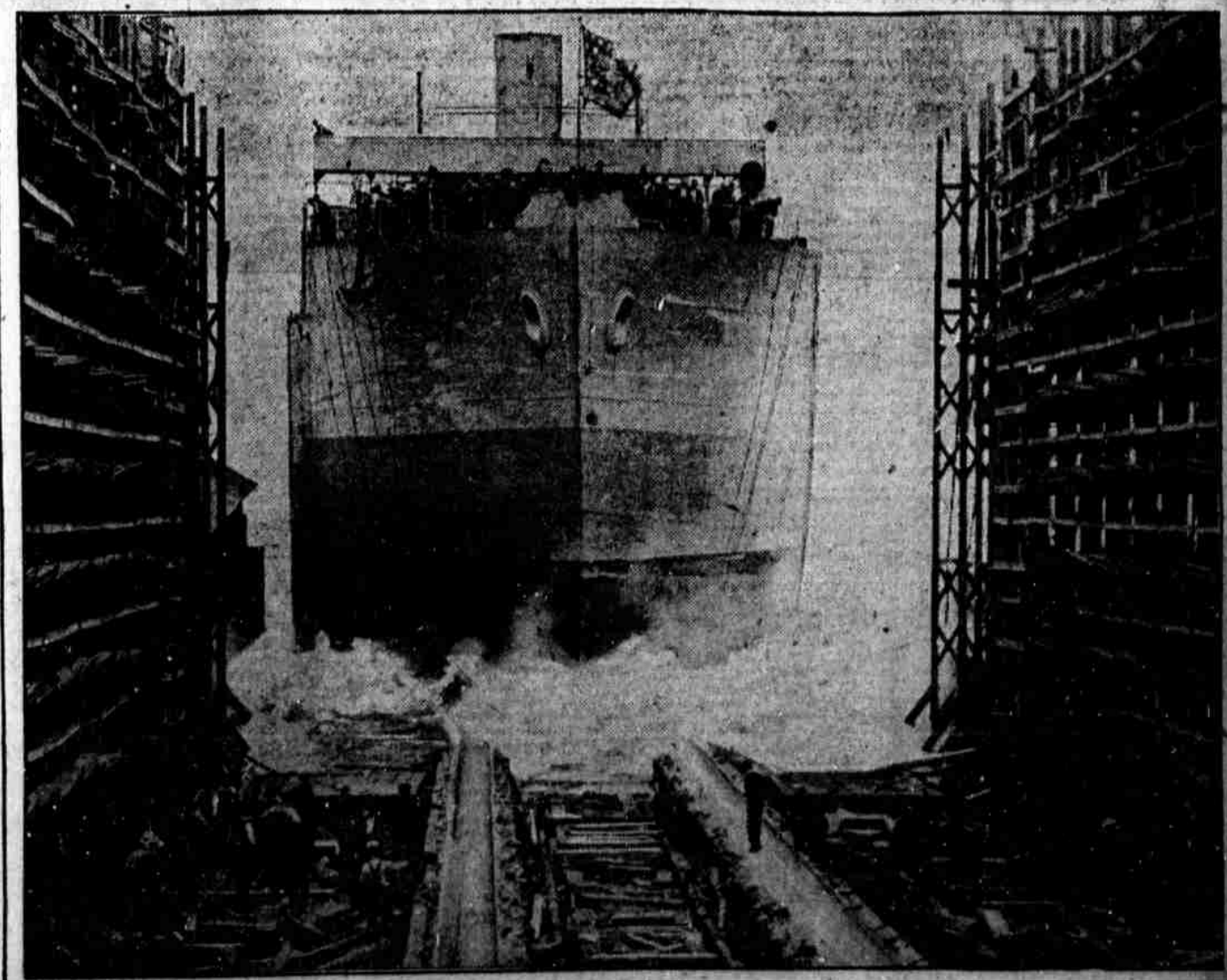
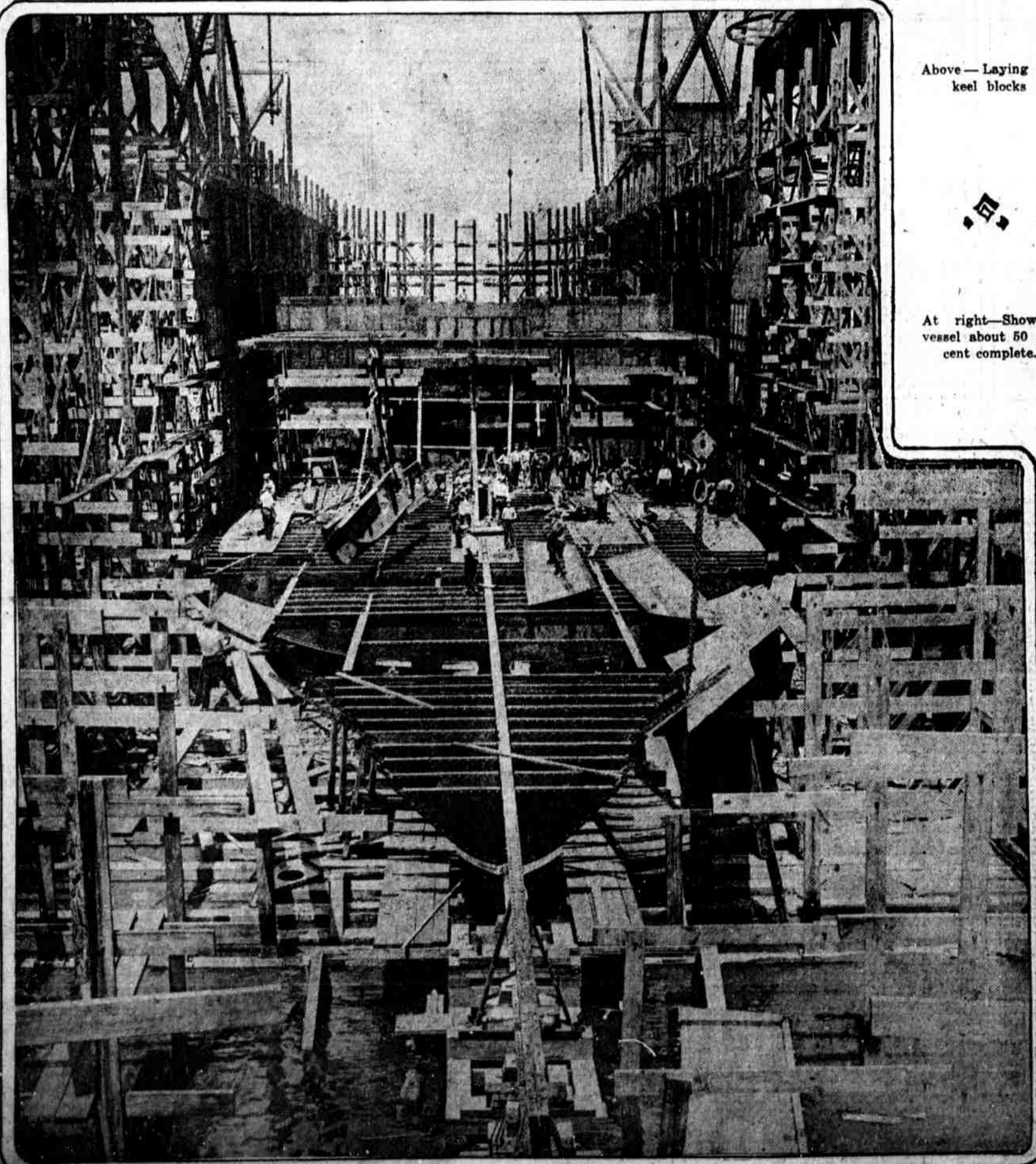


LAYING THE KEEL, second stage in the construction of a Hog Island ship. This view was made early in the history of the yard and before the ways were completed.



Above—Laying the keel blocks

At right—Showing vessel about 50 per cent complete.



SEVENTY-EIGHT-HUNDRED-TON FREIGHT STEAMER on the way, 15 per cent complete and rapidly taking shipshape. Derricks are employed in great numbers to lower the heavy steel plates into place for the riveting gangs.

A SHIP 85 per cent complete leaving the way for her first dip into the Delaware. She is now ready to go to the outfitting pier and have her turbines and shaft installed.