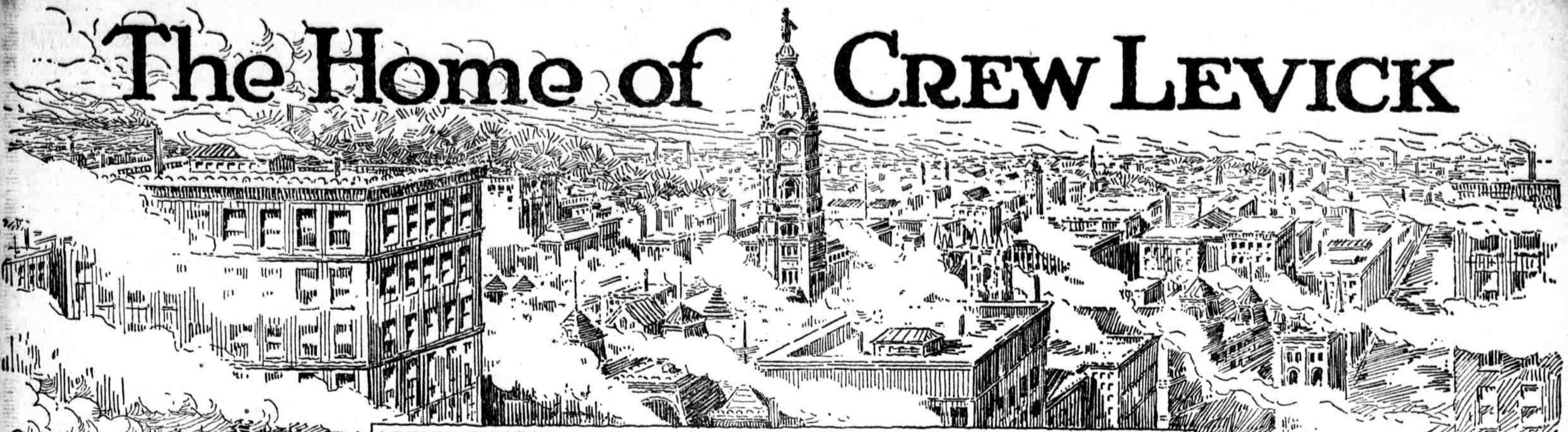


The Home of CREW LEVICK



REFINERIES
 Plant No. 1—WARREN
 " No. 2—TITUSVILLE
 " No. 3—TITUSVILLE
 " No. 4—PHILADELPHIA

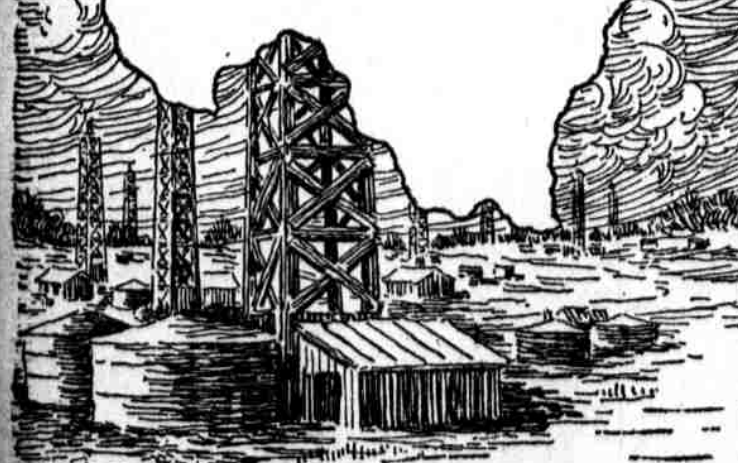
Pennsylvania



Oklahoma



Texas



It is natural that the home of the Crew Levick Company should be in the heart of "the world's greatest work-shop," because — —

Philadelphia Is First

- In building locomotives — 8 every day.
- In building street cars -- 10 every day.
- In weaving carpet — 45 million yards a year.
- In making worsted goods — 54 million yards a year.
- In making hose and half hose — 12 million dozen.
- In making underwear — 2 million dozen.
- In making hats — 5 million.
- In making cotton piece goods — 180 million yards.
- In making woolen goods — 28 million yards.
- In building steel ships -- a greater tonnage is completed every year on the Delaware River than in all the rest of the country.

Philadelphia Stands A Close Second

In the production of foundry and machinery products, sugar and molasses refining, chemicals, druggists' preparations, dyeing and finishing textiles, cordage and twine, fertilizers.

These items are well known, but few people realize that the oldest and largest producer of petroleum products is a Philadelphia concern.

It controls its own oil fields in Pennsylvania, Oklahoma and Texas; its own pipe lines; its own refineries located at Warren, Pennsylvania; Titusville, Pennsylvania; and Philadelphia; and is at present completing the most up-to-date refinery and export shipping station in the country at Petty's Island in the Delaware River.

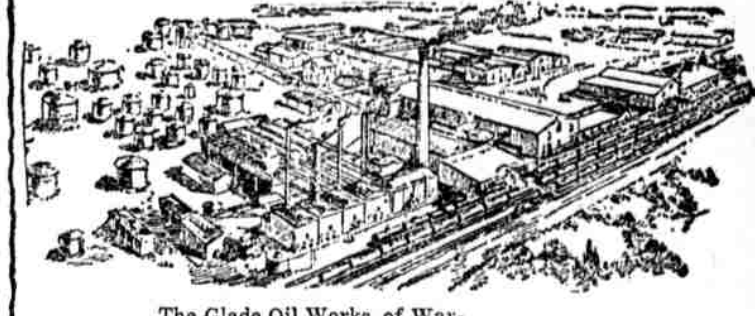
There are not many garages handling Crew Levick oils and grease, but those few are the best we can find from the standpoint of service.

All Crew Levick products sold in Philadelphia and Pennsylvania are made from Pennsylvania crude, recognized the world over for its superior lubricating quality. Its use will very materially reduce your lubrication and gas bills. Try it!

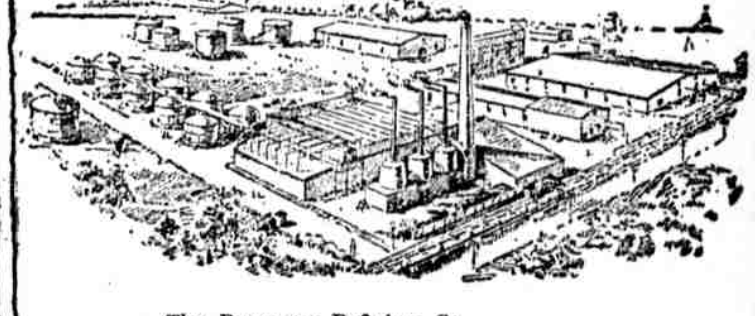
CREW LEVICK CO.,
 111 North Broad Street, Philadelphia

(Subsidiary Cities Service Company)

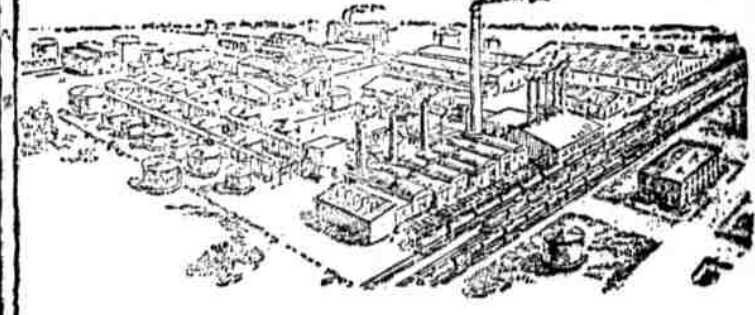
Branches:—Chicago New York Boston Syracuse Baltimore San Francisco



The Glade Oil Works, of Warren, Pa., also refine the full line of petroleum products from the heaviest to the very lightest kerosene, naphtha, gasoline, etc.



The Bessemer Refining Co., Titusville, Pa., one of the Crew Levick plants refining a full line of lubricating and burning oils.



The Pennsylvania Paraffine Works at Titusville, Pa., one of the most important of the Crew Levick plants, also refines the complete line of high quality petroleum products.



The Mifflin Street plant of Philadelphia is the big blending, compounding and distributing center for the East.