

**GOVERNOR ILL AGAIN;
MAY DELAY RETURN**

**Fight Over Philadelphia Reform
Bill in Legislature May Await
His Coming**

Governor Sprout is reported to have suffered a recurrence of rheumatism at Hot Springs, Va., where he has been recuperating from a previous attack for the last ten days. He may not return to Harrisburg next week, as he had originally planned.

Should the Governor's latest illness detain him his absence would probably delay action on the Philadelphia reform measures, for which the rival Penrose and Vare camps have been marshaling their forces.

Political leaders have intimated recently that the extent of any factional fight between the Penrose and Vare forces over charter revision, the Brady registration bills and other reform measures would depend largely on the attitude to be taken by the Governor. Followers of Senator Penrose had planned to arrange their program for a "showdown" on the reform measures this week and then submit it to the Governor for his consideration either tomorrow or Monday in Harrisburg.

Several amendments are understood to be drafted for the Woodward charter bills and will be presented when the measures reach the House. At present they are in the Senate municipal affairs committee, of which Senator Vare is chairman.

One of the proposed amendments will be presented by Representative James Franklin, a Vare member of the House from West Philadelphia. It will provide for the creation of a department of title insurance in the city government.

Representative Franklin says the city should have such a department because it has the machinery and that there is no reason why it should not carry on the business and "receive the financial returns which the title companies get for such services."

"The title companies," says Mr. Franklin, "use the city's books and other machinery to make their investigations and it has been brought to my attention that clerks in the office of the recorder of deeds and the receiver of taxes are paid by the title companies to make certain investigations. This practice, if it exists, should be stopped and the city should go into the business on its own account."

Grand Organ at 9,
11 and 4:45
Lenten Chimes at Noon

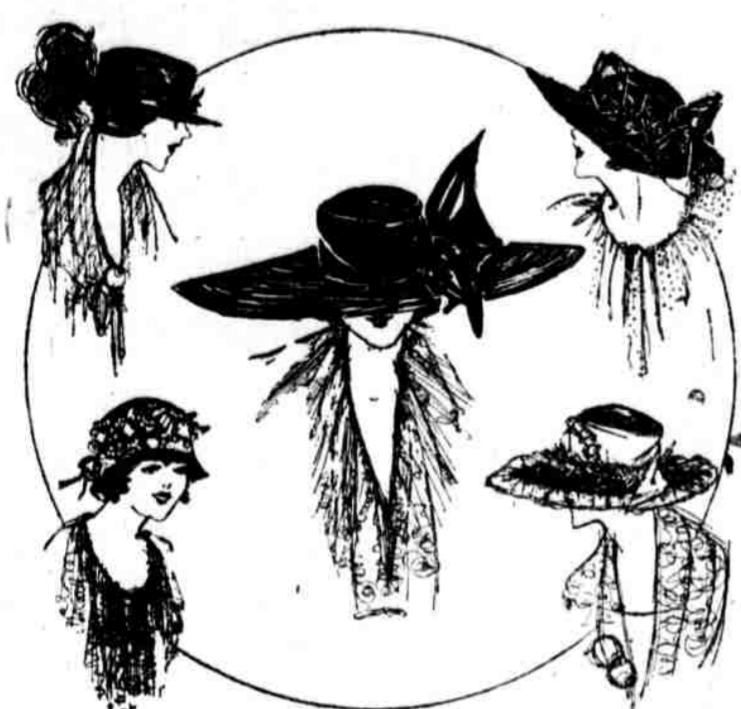
WANAMAKER'S

DOWN STAIRS STORE

WANAMAKER'S

WEATHER
Unsettled

**All Ready for the Wind-up Sale of Easter Fashions
at Low Prices in Wanamaker's Down Stairs Store**



**Easter Hats in Full Bloom Fill
Every Nook and Cranny of the
Down Stairs Millinery Salon**

Hats for every feminine member of the family are aglow with Easter radiance. For the wee girl there are becoming little pokes and soft-brimmed sailors with flying ribbons. For elder sister some lovely hats with drooping brims and wreaths of flowers. Mothers and aunts will like the very smart, close-fitting hats trimmed with wings, with burnt plume or with unusual bows of ribbon. Taffeta hats, in pastel colorings like Easter flowers, have been launched by the foremost fashion authorities.

**Thousands of Easter Hats—Most of
Them Being Shown for the First
Time—Are Ready for Saturday
at \$3.75, \$5, \$6 and \$8**

(Market)

**Lovely Neckwear
Half Price—50c**

A lot of sample collars, sets and vests. Just one or two of a kind of Georgette, organdie, pique, satin and the like. White, colors and combinations of colors. Half price and less, every piece. (Central)

**Easter Coats for
Little Children**

In one of these lovely little coats the small member of the family will feel as proud as big sister in her new cape or dolman—and justly so.

For children of 2 to 6 years there are many belted coats of serge or poplin and a few of silvertone. A Peter Thomson coat, which the little boy will delight in, is trimmed with brass buttons and has the chevron on the sleeve. Prices \$9.50 to \$14.

Tailored straw hats with ribbon streamers, to be worn with these coats, are in black, white and navy. Braided straw hats come in Copenhagen, rose, tan and green. Prices \$2.50 to \$6. (Central)

**A Skirt for the
Easter Parade**

These faillie poplin skirts are just right and are in oyster white, with figures or blocks of color in bright rose, green, purple, gold or blue. Beautifully made, with large pearl buttons on the girdles and inset pockets. \$10.

Or if you want a dark serge skirt to wear with a coat or cape this attractive model at \$13.50, in navy blue and black serge, will suit you. It has tucks around the top of the skirt and simulated opening in back, and a slight slit at the foot. (Market)



Easter Capes and Dolmans in Wide Variety

At \$7.50
A poplin cape with a surplice front, bound with braid and trimmed with buttons. It is in navy only and is shown in the sketch.

At \$12.75
Capes of serge or poplin made with a throw collar which ends in tassels. This also is sketched and comes in navy blue.

At \$15
A poplin cape with a contrasting shawl collar and buttons of poplin. In Pekin, Quaker, tan and taupe. Sketched.

At \$16.50
A velour cape of unusually good material in henna, Pekin, tan and taupe. It is sketched and shows a jacket front and bindings of braid.

At \$17.50
A suede velour dolman in Pekin, henna and Copenhagen has a belt.

At \$19.50
For women who prefer coats here are two styles in navy blue poplin, belted and half lined. They are in sizes 14 to 44.

At \$22.50
A poplin cape in tan, Pekin, navy and rose is cut on good lines and trimmed with a contrasting shawl collar of poplin. It is lined throughout.

At \$25 and \$27.50
There are fifty different styles in the group at these two prices. Capes and dolmans are of serge, velour and silvertone of good qualities in black, navy and the brighter Spring colorings. The choosing is wonderfully interesting.

At \$29.50
A tricotine dolman of good quality is in navy, tan or Copenhagen trimmed with a pleated, 'owl'-like collar and half lining of silk.

Wash Ribbon—Half Price

This is the best grade of washable lingerie ribbon to be had and is in a firm, heavy weave, the same on both sides. In blue, pink, white, lavender and peach color, varying in width from 3/4 of an inch, which is 28c for a piece of 10 yards, to 2 1/2 inches, which is \$3.90 for a 10-yard piece. Rosettes and bows are tied without charge. (Central)

Women's Silk Gloves 65c

Of a fine, heavy silk with two clasps at the wrist and embroidered backs in contrasting colors are in brown, heaver, pongee, light and dark gray, black and white. All are double-tipped for extra service.

**Washable Leather Gloves
at \$1.50**

These have a lovely soft doe finish, are outseam sewn, with black crocheted embroidered backs, one clasp, and they come in white only. (Central)

Lambskin Gloves at \$1.85

White lambskin gloves, pique sewn, with self Paris point stitched backs and one clasp at the wrist. (Central)

New Silk Blouses—\$3.90

Just the sort of fluffy blouse many women want to wear with Easter suits. Of crepe de chine in white, flesh, League blue, sunset, peach and Nile green. The pleated collar that forms a frill is tied in front with a little black bow. (Market)

**Silk Stockings
\$1.65 a Pair**

Black and white silk stockings for women are full fashioned and have mercerized cotton tops, well re-enforced. (Central)

**Jersey Top
Petticoats \$5.50**

They have good quality silk jersey tops and lovely flounces of taffeta or satin in plain or changeable colors. (Central)

Lovely Silk Underthings

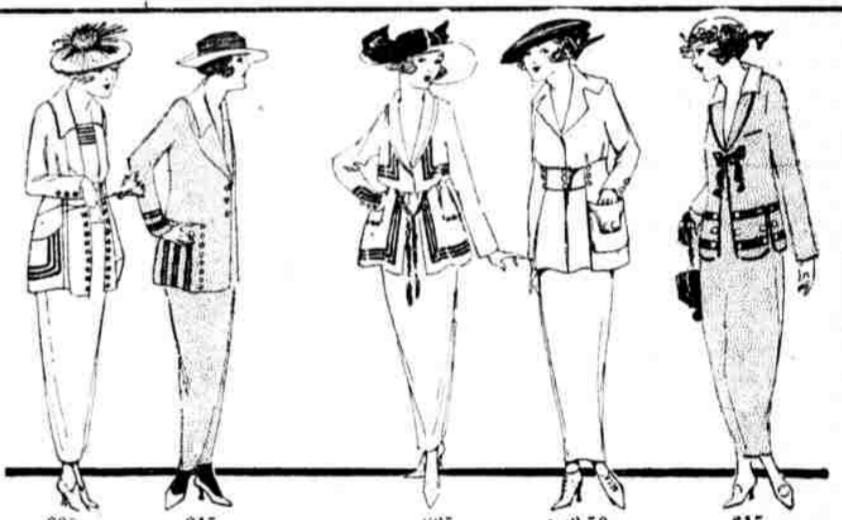
A pretty pink satin envelope chemise, with the top shirred and trimmed with blue, is caught in points on the shoulders. \$3.85. Heavy pink satin bloomers have ruffles inset with embroidered Georgette crepe. Cut generously full and re-enforced. \$5. A dainty camisole shirred around the top with elastic and much hemstitching, is finished in front with a rosebud. \$1.50. (Central)

Good Corsets

form the proper foundation for Easter suits and frocks. Special at \$1.35—A pink coutil corset for slight and average figures has a medium bust and long skirt. A pretty figured broche corset for medium and full figures is trimmed at the top with neat embroidery. \$2. Two good-looking models for average and full figures are \$3.50. One of silky figured pink broche is bound with pink satin around the top and has a low bust. The other, of white poplin figured in pink silk, has a medium bust. (Central)

**An April Special in
Umbrellas**

—for men and women—\$2. They are sturdy, but good looking umbrellas, with American taffeta (cotton) tape edge covers over Paragon frames. The handles for women are prettily tipped in colored bakelite with rings or silk loops, some with sterling silver. The handles for the men are plain, carved and trimmed with sterling silver. (Central)



**465 New Suits at Savings of
\$7.50 to \$12.50**

At \$15
Serge suits in black and navy blue. The jackets have roll collars of serge and top collars of white pongee and are cut on box lines trimmed with braid. All the jackets are lined with silk.

At \$16.50
Also a group of sample suits of wool poplin in a variety of models. There are box coats, rippling belted coats and many trimmed with braid in navy, henna, Copenhagen, tan, Pekin and green.

At \$20
Some smart little tweed suits in gray and tan mixtures with belted jackets and four patch pockets, lined with peau de cygne.

At \$22.50
Wool jersey sport suits made with a broad belt across the front and back. (Market)

Cuffs, belts and pockets are trimmed with big white pearl buttons, and the suits are in Pekin, Copenhagen blue, sand, rookie and rose.

At \$25
A most unusual group of tailored suits of very fine covert cloth. The semi-fitted jacket is trimmed with stitched bands of self-material and fine bone buttons in self-tone.

At \$37.50
A pretty blouse suit at this price is of mannish serge trimmed with black silk braid and a cord girdle.

At \$39.50
Some novel tailored suits of mannish serge and tricotine in four different models. Mostly in navy and black and a few in tan. All are trimmed or bound with braid and have unusual silk vests. The linings are of figured silk.

At \$39.50
Novel suits of tricotine and fine serge in navy blue. Coats are beautifully lined, and almost all have embroidered silk vests.

**Nobody ever
Changes
from
RAMESES
CIGARETTES**

Don't ask why—try a box

**14-Karat Solid GOLD \$12
17 JEWEL D**

For more than 32 years we have been building up the enormous watch business which we now enjoy—and we have established many precedents in watch-making during those years. But we can find no record of our ever selling such fine Watches as these at so modest a price as \$12. When our experts on watches were told that we were going to sell these Watches for \$12 they gasped in amazement, for they are priced in every city in the country for at least \$20, and usually more. A written guarantee goes with every one. Note these other specials:

- 225 Solid 14K Gold Watches, \$15
- 225 Solid 14K Gold Watches, \$25
- 225 Solid 14K Gold Watches, \$40
- 225 Solid 14K Gold Watches, \$55
- 225 Solid 14K Gold Watches, \$85
- 225 Solid 14K Gold Watches, \$110
- 225 Solid 14K Gold Watches, \$130

If any Watch purchased from us proves unsatisfactory, it can be returned within 10 days and we will refund your money or exchange it for a new one.

NO MAIL ORDERS FILLED

J. PRESS & SONS
DIAMONDS—WATCHES—JEWELRY
N. W. Cor. 8TH & CHESTNUT STS.
1017 MARKET ST. 900 MARKET ST.
ALL TRADE STORES OPEN EVENINGS

**New Dresses of Taffeta, Crepe
de Chine and Georgette at
Savings of \$7.50 to \$10.**

At \$15
Taffeta dresses of heavy lustrous quality are made with deep tucks on the bodices and skirts and show the new round collar.

At \$16.50
An unusual model at this price has a bodice trimmed with soutache braid and a skirt has broad tucks inlaid with contrasting color.

At \$18.50
Another model has a broad beaded girdle and is trimmed with pleated frills.

At \$25
A third is embroidered about the collar and bodice with tiny beads. The broad girdle ties in a bow in the back. These are in navy, black, green, brown, tan and Copenhagen.

At \$22.50
Lovely frocks of soft crepe de chine and satin deeply tucked and frocks of beaded taffeta in coat effect. Many are embroidered with tiny beads and one has a pointed overskirt. They are in black, Copenhagen, navy and taupe. These are all beautiful dresses of fine materials. (Market)

Georgette Crepe Frocks at \$22.50
Frocks of navy, Copenhagen and white embroidered with self and contrasting beads. A model from this group is sketched.

At \$25
These dresses are more heavily beaded in all-over designs and are made on silk foundations. They are in white, pearl, gray and Copenhagen.

At \$35
Very handsome dresses in two different models, both silk-lined. They are in navy, Belgian blue and taupe, very elaborately beaded in black.

Sample Wool Jersey Frocks, \$15
A little lot of fine jersey dresses of which we have only two or three of a kind. Some are trimmed with buttons, some embroidered in silk, others tucked or braided. All are lined with silk. The minimum saving on these dresses is \$10.

Serge Dresses, \$9.75
These are mostly in navy blue, though there are a few in tan. They are bound and trimmed with braid and are in several practical every-day models. (Market)

To Step Out Properly in the Easter Parade—New Shoes

Easter Shoes for Women

Black patent leather, brown kidskin and black calfskin oxford ties with turned soles and high covered heels are \$5.25. Gray kidskin oxford ties with turned soles and high covered heels are \$5.75. Black patent leather and black calfskin ties with high curved heels and welted soles are \$5.90. Tan or black calfskin and black kidskin ties with medium or low heels and welted soles are \$6.40. Black or tan calfskin and black patent leather pumps are made with turned soles and high covered heels and are \$5.40.

White Shoes and Oxford Ties for Women

White leather, buckskin finish, lace shoes with curved heels are \$4.75, the same style with low heels is \$4.50. White kidskin lace shoes with turned soles and covered heels are \$4.90 a pair.

White buckskin finish leather ties with welted soles and medium heels are \$5.75. White rubber sole and heel oxfords are \$5.75. White canvas with welted soles and medium heels are \$4.75.

Men's Shoes and Oxford Ties

Dark tan or black oxford ties on English lasts are \$5.50. Dark tan or black shoes on sensible wide toe shapes or English lasts are \$4.25 to \$5.90.

For Boys—Oxford ties of dark tan or dull black leather in sizes 2 1/2 to 6 are \$5. Dark tan or dull black leather shoes on English lasts or wide toe shapes in sizes 10 to 6 are \$4 to \$4.90.

Easter Shoes for the Children

White buckskin finish leather pumps, ties and lace or button shoes with welted soles in sizes 8 1/2 to 2 are \$2.75 to \$4.75. (Central)

White button shoes with turned soles, sizes 2 1/2 to 10 1/2, are \$2.75 to \$4.75. White oxford ties with welted soles in sizes 8 1/2 to 2 are \$4 and \$4.50. White leather ankle strap pumps with welted soles in sizes 6 to 2 are \$2.25 to \$3.25; white canvas pumps in the same style are \$3.75, sizes 2 1/2 to 6. White canvas button shoes with welted soles, sizes 6 to 2, are \$2 to \$2.50; girls' sizes, 2 1/2 to 6, \$2.75. Black patent leather or calfskin oxford ties or ankle strap pumps in sizes 8 1/2 to 2 are \$3.50 to \$4.25. Black kidskin or patent leather and tan kidskin shoes, some with white or champagne tops and wedge heels, in sizes 2 to 8, are \$1.15 to \$2.50. Dark tan calfskin lace shoes with welted soles in sizes 8 1/2 to 2 are \$4.75 and \$5.40. Girls' black or tan calfskin oxford ties with welted soles in sizes 2 1/2 to 6 are \$5.40 to \$5.75. These also come in black patent leather and white buckskin finish leather. Girls' white leather shoes in buckskin finish with welted soles and medium heels are \$4.50. Sizes 2 1/2 to 6. These may also be had with rubber soles and heels.