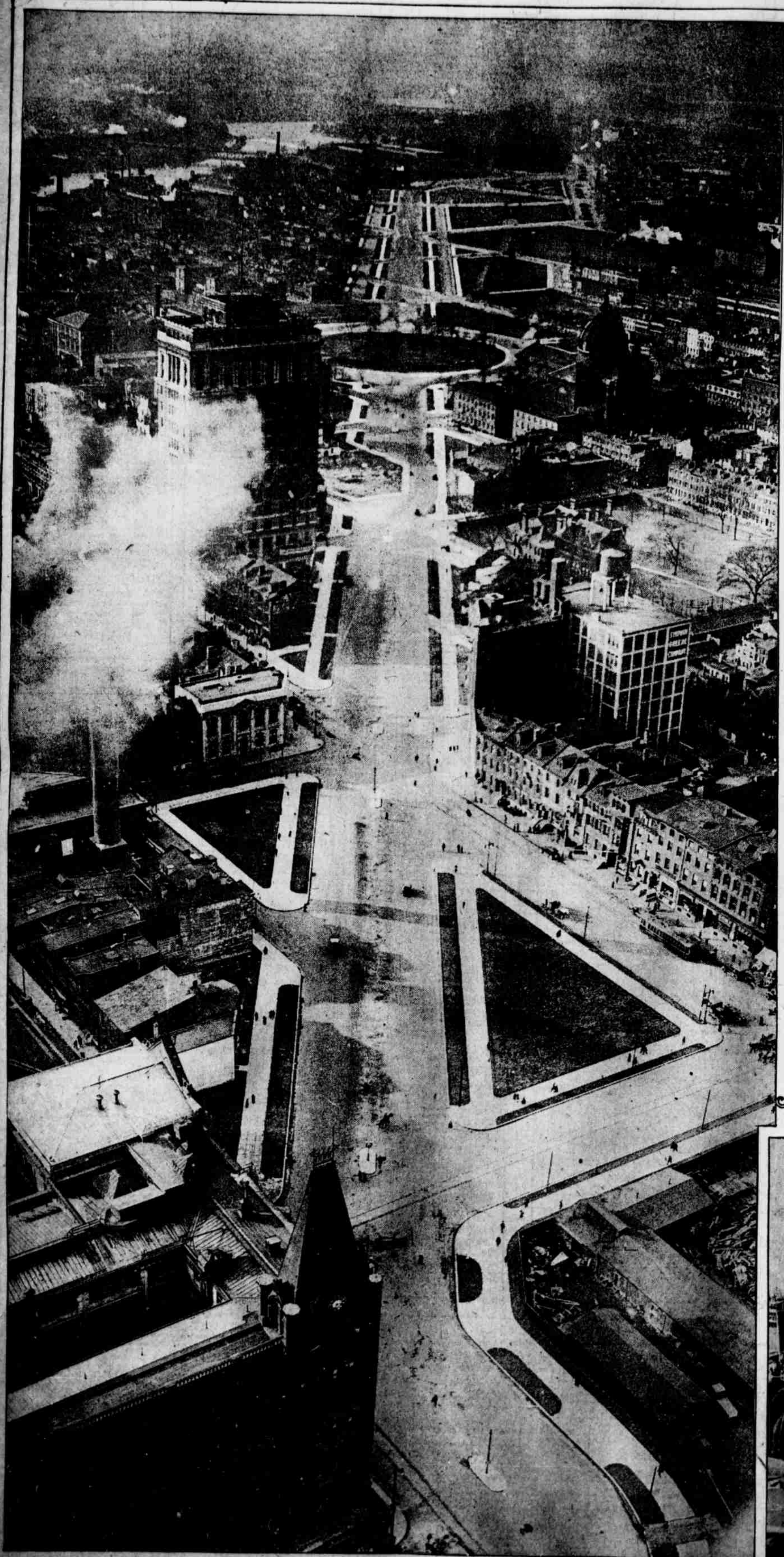


The Parkway Today, From Eastern Terminus to Fairmount Park; A Famous Novelist Here



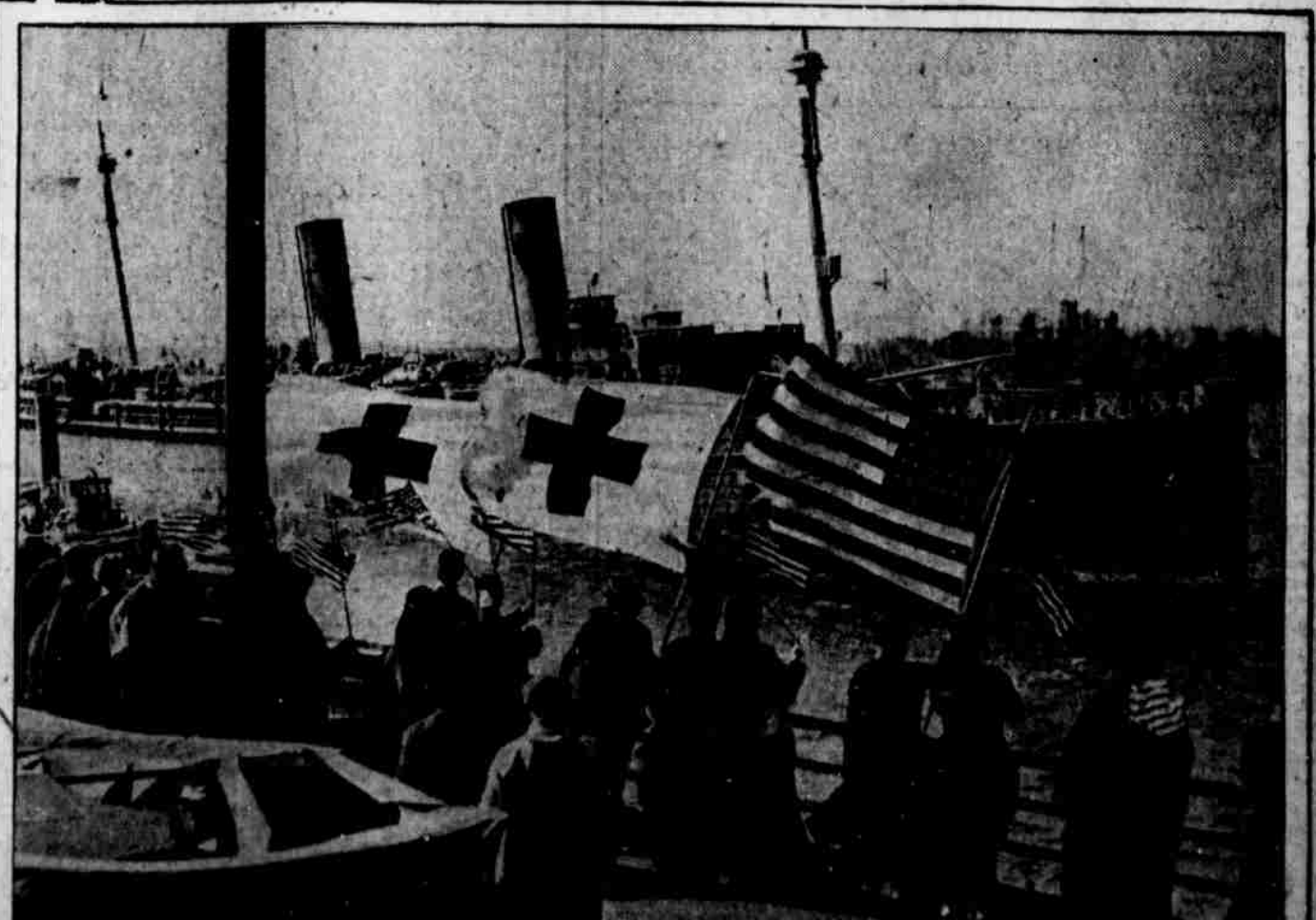
MARY ROBERTS RINEHART, famous novelist, recently returned from France, addressing the members of Independence Square Auxiliary of the Red Cross, at 608 Chestnut street. In an interview Mrs. Rinehart said that conditions at Brest are "halfway between unbearable and very good"



THE SUPERINTENDENT OF THE PHILADELPHIA MINT, Adam M. Joyce, official host to the government assay commission last week, which came to test the weight and fineness of U. S. coinage.



THE FAR EAST COBBLER of the Japanese transport Malay Maru, at the Reed street wharf, adds a few finishing taps to the all-sole Nipponese footwear.



THE TRANSPORT LOUISVILLE arriving at New York from France with Squadron A, 951st Artillery, negro troops from Pennsylvania, and "casuals." The steamer docked amidst the greeting of the Red Cross and other war organizations

THE PARKWAY IS NOW CUT THROUGH all the way; a few finishing touches are required here and there to complete the project. The work to be done lies between Seventeenth and Eighteenth streets, which was occupied by the Medico-Chirurgical College and Hospital. These structures were left standing, in compliance with a request made by the government that the War Department might use them for hospital purposes during the war.