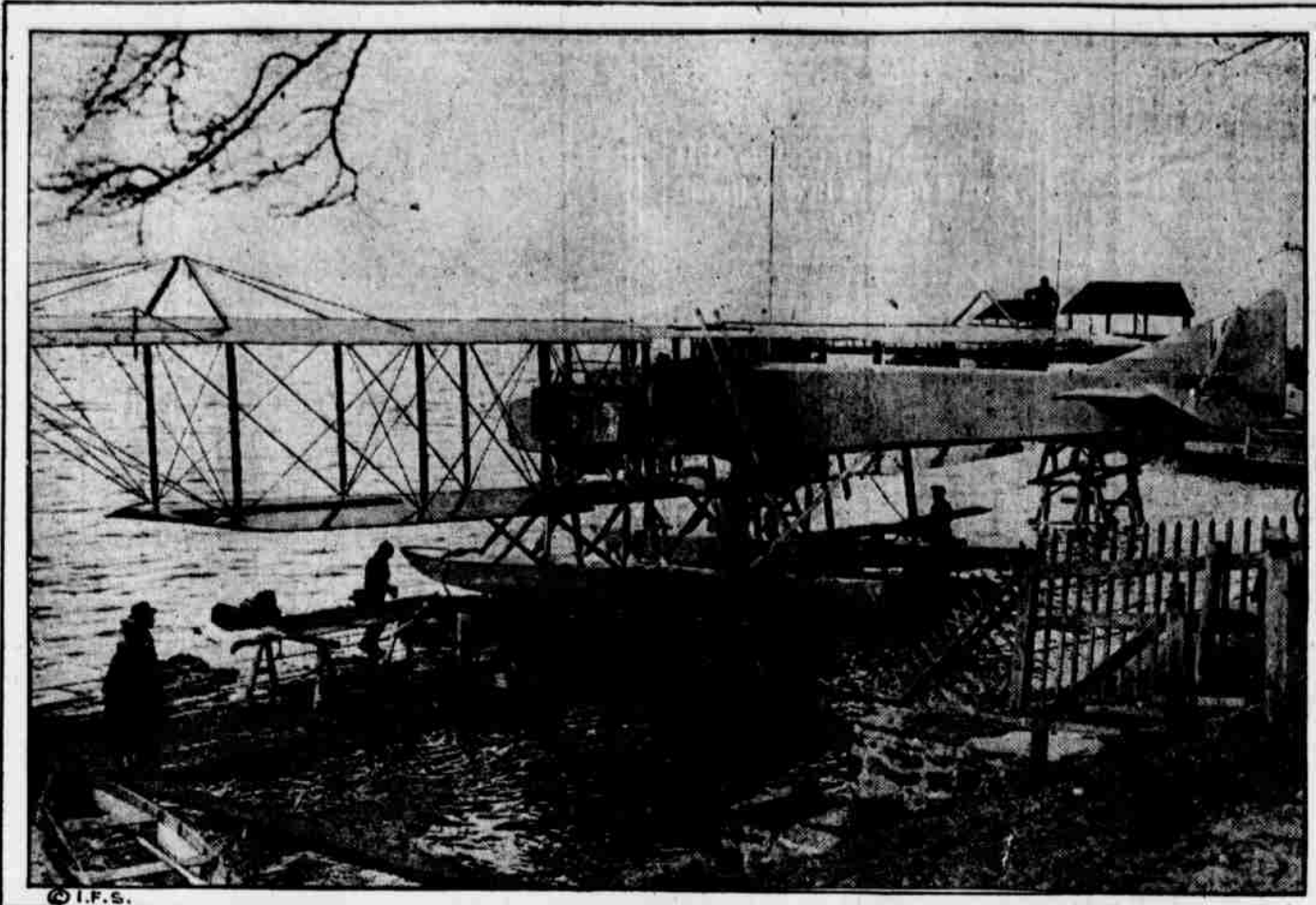


A City School's Lack of Adequate Playyard Space; Varied Views From Here and Abroad



THE JAPANESE STEAMSHIP Malay Maru, in transport service since September, is docked at the Reed street wharf. Flying from the ship's staff is the merchant flag of Japan.



A VIEW OF THE GIANT SEAPLANE designed by Hugo Sundstedt, Swedish aviator, in which he hopes to fly across the Atlantic in the near future. The plane is being turned up at Bayonne, N. J. It is capable of a speed of eighty miles per hour. Sundstedt expects to fly between Newfoundland and Ireland, a distance of 1800 miles, in twenty-two hours. A slight mishap to the giant aircraft was narrowly averted yesterday at launching.



LOYAL EBERT TROOPS from the top of one of the prominent government buildings in Berlin training their guns on the rebellious Reds.



THE BRITISH WARSHIP ERIN sending off a "smoke screen." This photograph was made at sea from a kite balloon.



WHEN ALL THE CHILDREN of the Jefferson School, Fifth street above Poplar, are in the school yard each child has only a few square feet for play. Among the school buildings classed as "ramshackle" by David H. Lane, member of the Board of Education, is the Jefferson School. This school was built seventy-eight years ago and remodelled in 1910. Now it is being used as no longer fit for school purposes.