

"FIRST NIGHTERS" HAVE ONLY ONE NEXT WEEK, BUT MANY GOOD ATTRACTIONS REMAIN

THE PLAYGOER'S WEEKLY TALK Observations on Plays and Photoplays of Interest to Philadelphians

WHY should actors be hard up on the theatre? It is a question put to the Playgoer's Fund...

The Actors Fund has been in existence for thirty-seven years and in the early days was able to cope with the demands made upon its resources...

They are really on a par with the public only on the act and actresses who freely take on the duties of an unpaid performance.

IN HER dressing room at the Shubert last night, Peggy Worth, comedienne of "Rock-a-Bye Baby," held forth on the advisability of adopting farces and comedy-dramas for the musical stage...

There are many arguments in favor of taking a farce or comedy that has stood the test of entertainment for patrons of the drama in both the spoken and silent forms...

Many musical comedies of recent years have been so absolutely lacking in anything that might approach the more or less able comedy of the past...

Other recent productions of like origin include "A Full House;" "The Rainbow Girl," a musicalized version of "The New York Enticement;" and "Oh, Love!" which is a "Bread and Butter" musical comedy.

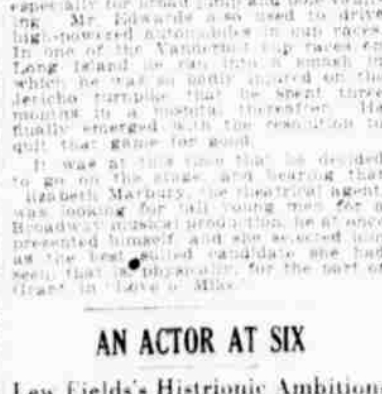
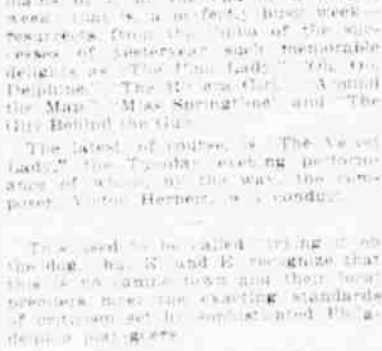
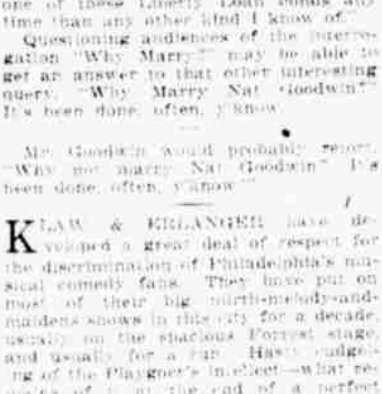
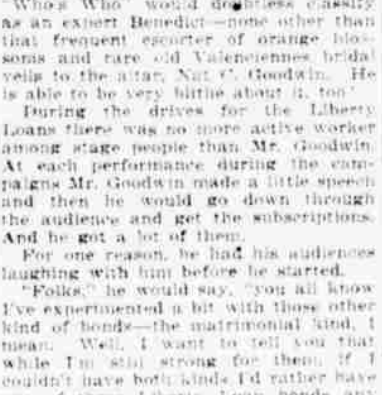
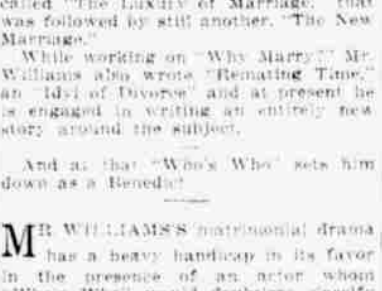
The most modern sign of the times is that the audience has been made a part of the plot with the help of the stage and the talkers and the audience has been made a part of the plot...

FROM SPORTS TO STAGE Alan Edwards Paused in Movie En Route From Gridiron

AN ACTOR AT SIX Lew Fields' Historic Ambitions Date Back to Knickerbockers

JESSE LITCH WILLIAMS, author of "Why Marry?" the comedy on marriage which was put on at the Adelphi Monday, has probably written more about marriage than any other contemporary American...

BEHIND THE FOOTLIGHTS AND ON THE FILMS



GABY DESLIS, "INFATUATION," Palace

FAY MARBE, "THE VERVE LADY," Forrest

BERT LYTELL, "THE SPENDER," Regent

LILLIAN LANE, "NIXON'S GRAND," Grand

ROBERT HARRON, "ROMANCE OF HAPPY VALLEY," Stanley

ERNEST LAWFORD, LEONARD MUDIE, LOTUS ROBB, NAT C. GOODWIN and LOUISE RANDOLPH, "WHY MARRY?" Adelphi

JOSEPHINE ADAMS, "THE BETTER DEAL," Broad

LEW FIELDS and CHAS WINNINGER, "FRIENDLY ENEMIES," Lyric

MINNA GALE HAYNES, "A TAILOR-MADE MAN," Garrick

LEILA MCINTYRE, "B. F. Keiths," Casino

LEILA MCINTYRE, "B. F. Keiths," Casino

LEILA MCINTYRE, "B. F. Keiths," Casino

LEILA MCINTYRE, "B. F. Keiths," Casino

LEILA MCINTYRE, "B. F. Keiths," Casino

LEILA MCINTYRE, "B. F. Keiths," Casino

LEILA MCINTYRE, "B. F. Keiths," Casino

LEILA MCINTYRE, "B. F. Keiths," Casino

LEILA MCINTYRE, "B. F. Keiths," Casino

LEILA MCINTYRE, "B. F. Keiths," Casino

LEILA MCINTYRE, "B. F. Keiths," Casino

THE CRITIC TALKS TO MUSIC LOVERS

WEEKLY COMMENT ON THINGS MUSICAL IN DISCRIMINATING PHILADELPHIA

THE performance of Saint-Saens' opera, "Samson et Dalila," which he himself describes as his master work...

LETTER addressed to the Music Editor of the EVENING PUBLIC LEDGER makes the very pertinent inquiry as to why given of solo recitals...

STANLEY—Settlement Music School symphony concert, 8 p. m. Katherina Meikle, Bernard Argovitch, Agnes Cline Quinlan, soloists.

MONDAY—Monday Musicale, Bellevue-Stratford, 3 p. m. Olga Samsonoff and Florence MacGill, soloists.

WEDNESDAY—Symphony Club Orchestra, Central Y. M. C. A., 8:15 p. m. Wedding recital, Witherspoon Hall, 8:15 p. m.

FRIDAY—Philadelphia Orchestra, Academy of Music, 8 p. m. Alphonse Casadesu, guest conductor.

SATURDAY—Philadelphia Orchestra, Academy of Music, 8 p. m. Alphonse Casadesu, guest conductor.

SUNDAY—Philadelphia Orchestra, Academy of Music, 8 p. m. Alphonse Casadesu, guest conductor.

MUSICAL EVENTS IN THE CITY NEXT WEEK

STANLEY—Settlement Music School symphony concert, 8 p. m. Katherina Meikle, Bernard Argovitch, Agnes Cline Quinlan, soloists.

MONDAY—Monday Musicale, Bellevue-Stratford, 3 p. m. Olga Samsonoff and Florence MacGill, soloists.

WEDNESDAY—Symphony Club Orchestra, Central Y. M. C. A., 8:15 p. m. Wedding recital, Witherspoon Hall, 8:15 p. m.

FRIDAY—Philadelphia Orchestra, Academy of Music, 8 p. m. Alphonse Casadesu, guest conductor.

SATURDAY—Philadelphia Orchestra, Academy of Music, 8 p. m. Alphonse Casadesu, guest conductor.

SUNDAY—Philadelphia Orchestra, Academy of Music, 8 p. m. Alphonse Casadesu, guest conductor.

WANTED: EMOTIONAL ROLE Philadelphia Actress Years for Scenery-Eating Part

COMING EVENTS IN STUDIO AND CONCERT

EXTRA-FORREST Friday, Feb. 7 at 1:45 Monster Benefit Matinee ACTORS' FUND of America

BACK TO "TWO-A-DAY" Hyams and McIntyre Again Near Vaudeville's Call

PLAYERS in the two-day frequently stray into other fields, but always come back to vaudeville. Headliners are frequently passing from this popular form of entertainment and become stars in musical comedy and the legitimate, but vaudeville which sooner or later calls these artists back to its fold.

The most recent case in point is that of the youngest and most popular of musical comedy stars, who are once more back in vaudeville with a playlet with songs, called "Maybloom." Hyams and McIntyre are known as vaudevillians, but it is a fact that neither began a career in the two-day.

Boys "OVER THERE" SAFE Newman Takes Audience to Front in Traveltalk at Academy

FIRST-NIGHTERS FROM AFAR Long-Distance Record Made by Author's and Star's Relatives

WARTIME ITALY LECTURE "Robin Hood" Music at Stanley

WANTED: EMOTIONAL ROLE Philadelphia Actress Years for Scenery-Eating Part

COMING EVENTS IN STUDIO AND CONCERT

EXTRA-FORREST Friday, Feb. 7 at 1:45 Monster Benefit Matinee ACTORS' FUND of America

WANTED: EMOTIONAL ROLE Philadelphia Actress Years for Scenery-Eating Part

WANTED: EMOTIONAL ROLE Philadelphia Actress Years for Scenery-Eating Part

MARY Martin is happy in her role of Corinne Stanbury in "A Tailor-Made Man" at the Garrick, yet she would like to have opportunity to play an emotional part. Miss Martin is a Philadelphian who went to school here and who completed her studies at a convent here. She is twenty-five years of age and her achievements as a player on the stage and in motion pictures seem to promise a future.

WARTIME ITALY LECTURE "Robin Hood" Music at Stanley

COMING EVENTS IN STUDIO AND CONCERT

EXTRA-FORREST Friday, Feb. 7 at 1:45 Monster Benefit Matinee ACTORS' FUND of America

WANTED: EMOTIONAL ROLE Philadelphia Actress Years for Scenery-Eating Part

COMING EVENTS IN STUDIO AND CONCERT

EXTRA-FORREST Friday, Feb. 7 at 1:45 Monster Benefit Matinee ACTORS' FUND of America

WANTED: EMOTIONAL ROLE Philadelphia Actress Years for Scenery-Eating Part

WANTED: EMOTIONAL ROLE Philadelphia Actress Years for Scenery-Eating Part

WANTED: EMOTIONAL ROLE Philadelphia Actress Years for Scenery-Eating Part

MARY Martin is happy in her role of Corinne Stanbury in "A Tailor-Made Man" at the Garrick, yet she would like to have opportunity to play an emotional part. Miss Martin is a Philadelphian who went to school here and who completed her studies at a convent here. She is twenty-five years of age and her achievements as a player on the stage and in motion pictures seem to promise a future.

WARTIME ITALY LECTURE "Robin Hood" Music at Stanley

COMING EVENTS IN STUDIO AND CONCERT

EXTRA-FORREST Friday, Feb. 7 at 1:45 Monster Benefit Matinee ACTORS' FUND of America

WANTED: EMOTIONAL ROLE Philadelphia Actress Years for Scenery-Eating Part

COMING EVENTS IN STUDIO AND CONCERT

EXTRA-FORREST Friday, Feb. 7 at 1:45 Monster Benefit Matinee ACTORS' FUND of America

WANTED: EMOTIONAL ROLE Philadelphia Actress Years for Scenery-Eating Part

WANTED: EMOTIONAL ROLE Philadelphia Actress Years for Scenery-Eating Part

B.F. Keiths CHESTNUT BELOW TWELFTH STREET GREATEST AMUSEMENT VALUE EVER OFFERED!

MME. MARGUERITE A SILVA PRIMA DONNA, CHICAGO OPERA ASSOCIATION, SOCIETY OF AMERICAN SINGERS, PARIS GRAND OPERA AND PARIS OPERA COMIQUE

ACTORS' FUND of America DIRECTION OF DANIEL FROHMAN President of the Actors' Fund

NIXON'S GRAND JEROME AND MONTGOMERY Star Feature: Nixon's Grand

W.M. PENN 5 FEATURE ACTS FRED J. ARBATH & CO. IN

WANTED: EMOTIONAL ROLE Philadelphia Actress Years for Scenery-Eating Part

COMING EVENTS IN STUDIO AND CONCERT

EXTRA-FORREST Friday, Feb. 7 at 1:45 Monster Benefit Matinee ACTORS' FUND of America

WANTED: EMOTIONAL ROLE Philadelphia Actress Years for Scenery-Eating Part

WANTED: EMOTIONAL ROLE Philadelphia Actress Years for Scenery-Eating Part