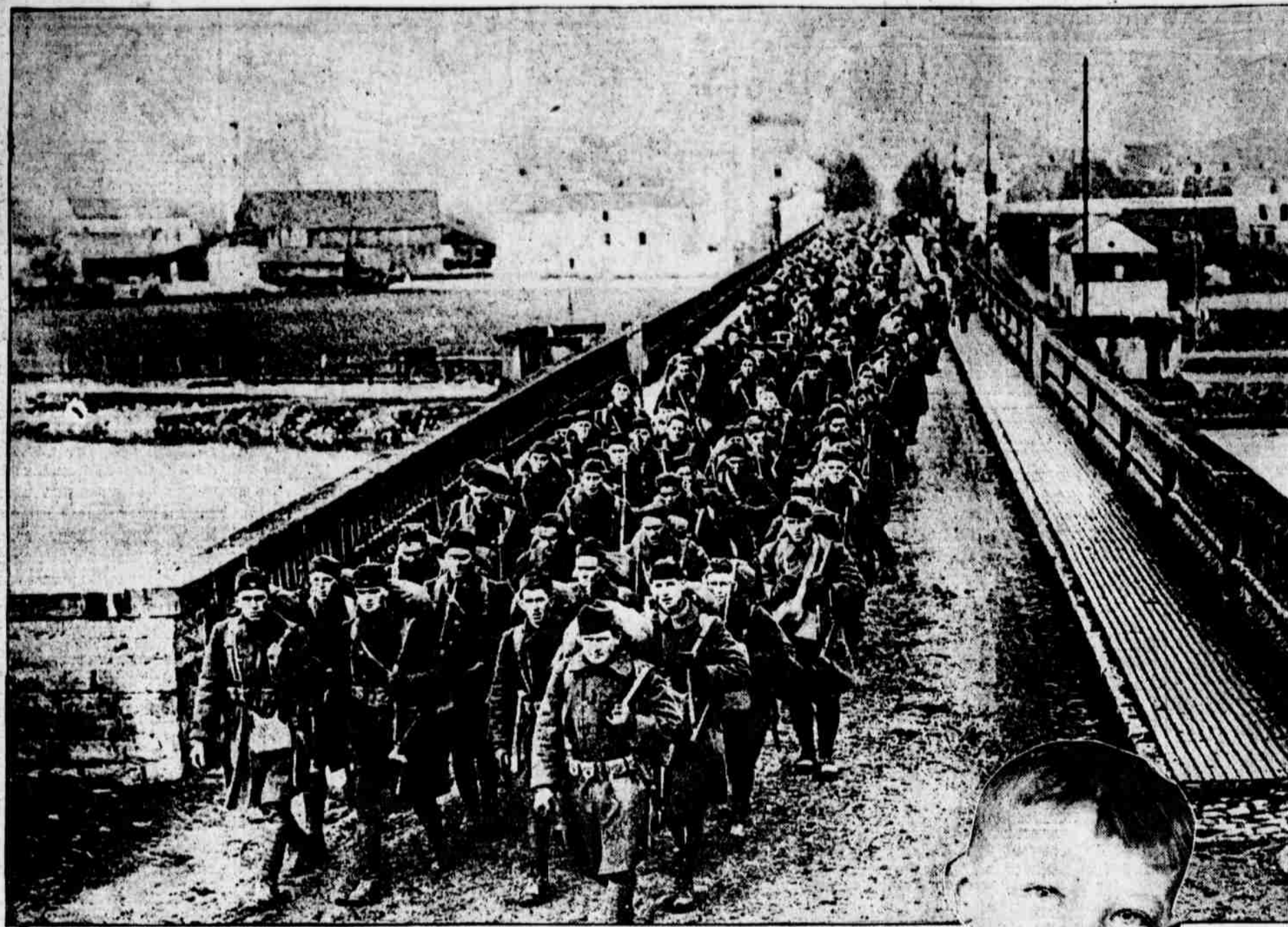


Varied Features of Interest, Gleaned By the Camera, From Here, There and Everywhere



© Committee Public Information

THE KHAKI-CLAD AMERICAN ARMY OF OCCUPATION crossing a bridge over the Moselle River at Treves in Rhenish Prussia, stepping on German soil.



Photo by International Film Service

THE END OF THE GERMAN UNDERSEA MERCHANTMAN DEUTSCHLAND. She paid two visits to America, bobbing up first at Baltimore and later on at New London, Conn. Here she is at anchor in the Thames, flying the white ensign of England at her top, the Tower Bridge in the background, her days of ruthlessness over.



© Committee Public Information

HERE'S PRESIDENT WILSON as seafarer, binoculars to his eyes, watching the accompanying battleship Pennsylvania. At his left is Captain McCauley, of the S. S. George Washington, and behind the President is Rear Admiral Grayson.



PUTTING THE NEW YEAR PUMPKIN PIE TO THE PROOF—a gustatory test that appears eminently satisfactory in the expert hands—and mouth of our young gourmet.



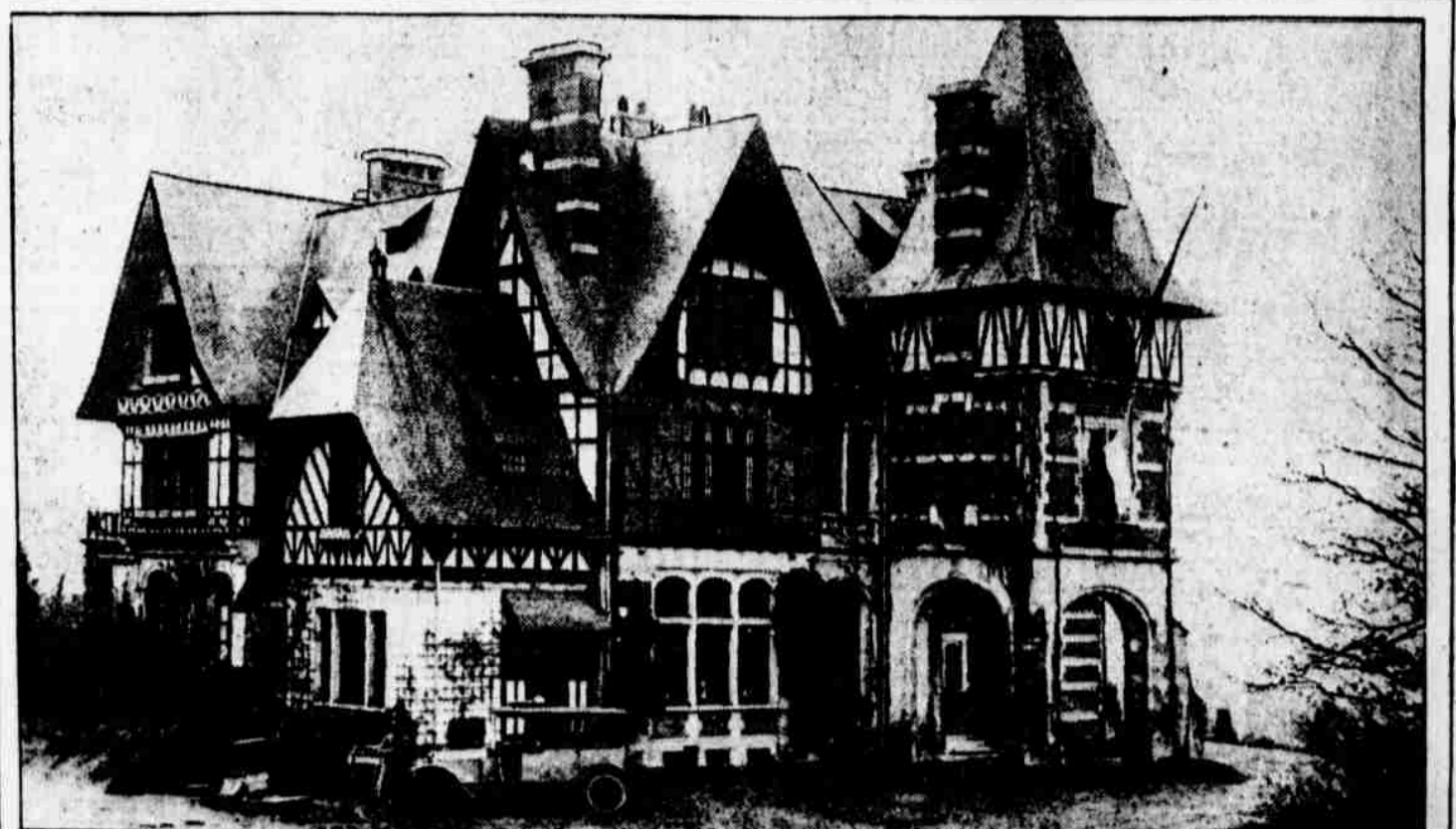
© Underwood & Underwood

THE HOHENZOLLERN EXIT PASSAGE Entrance to tunnel leading from the Kaiser's castle at Spa to distant point in the woods. Wilhelm fled through this in his flight to the Netherlands



© I. E. S.

NOT A SLAVE SHIP—but colored Freemen going overseas to wallop the Boche. This photograph, withheld during the war, has just been released, and shows the bath hour on a colored troop ship on the way across the Atlantic.



© U. E. U.

THIS CASTLE AT SPA was the home of the Kaiser during the last stages of the war. It was from here that he started his memorable flight across the border, seeking sanctuary in the Netherlands.