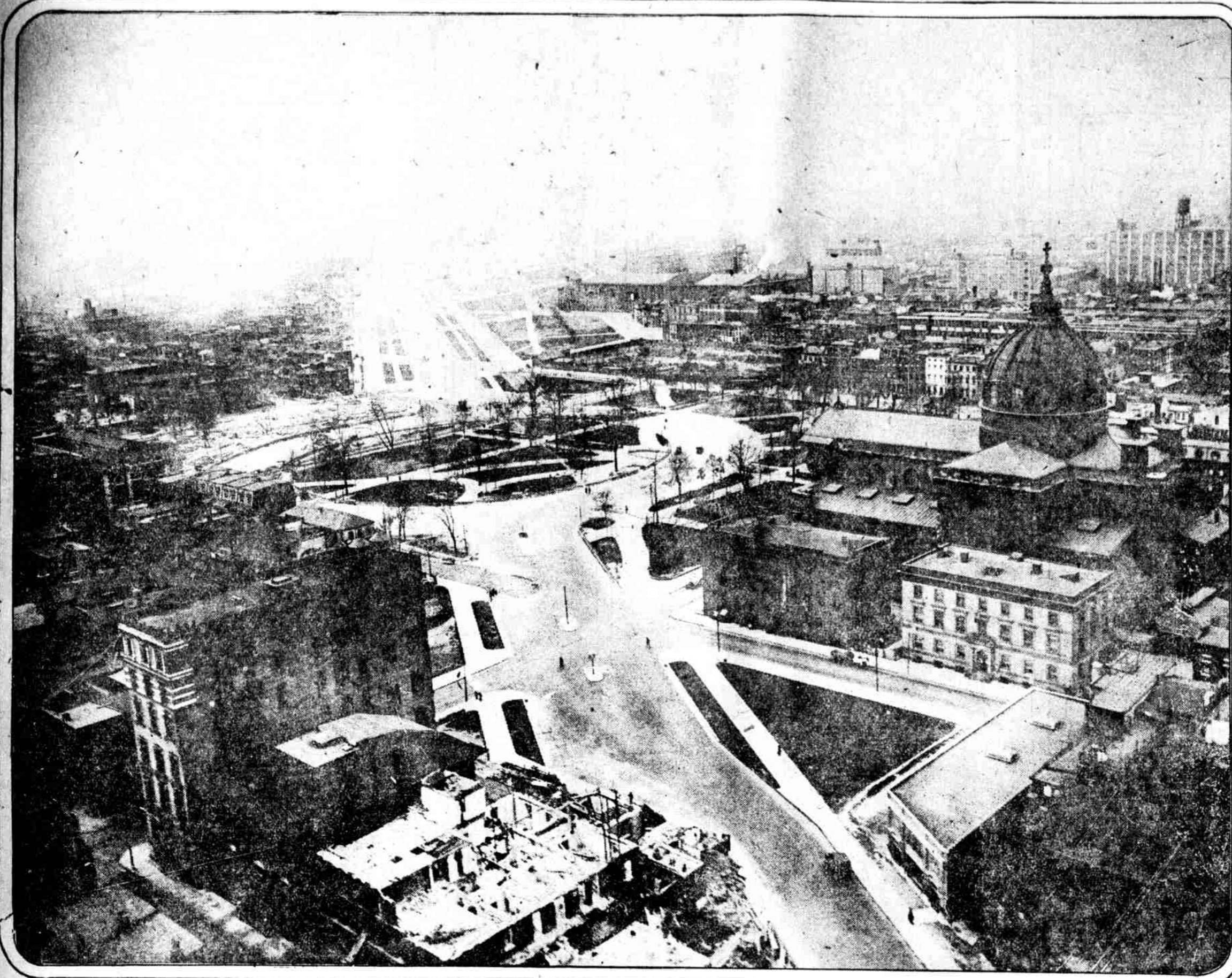
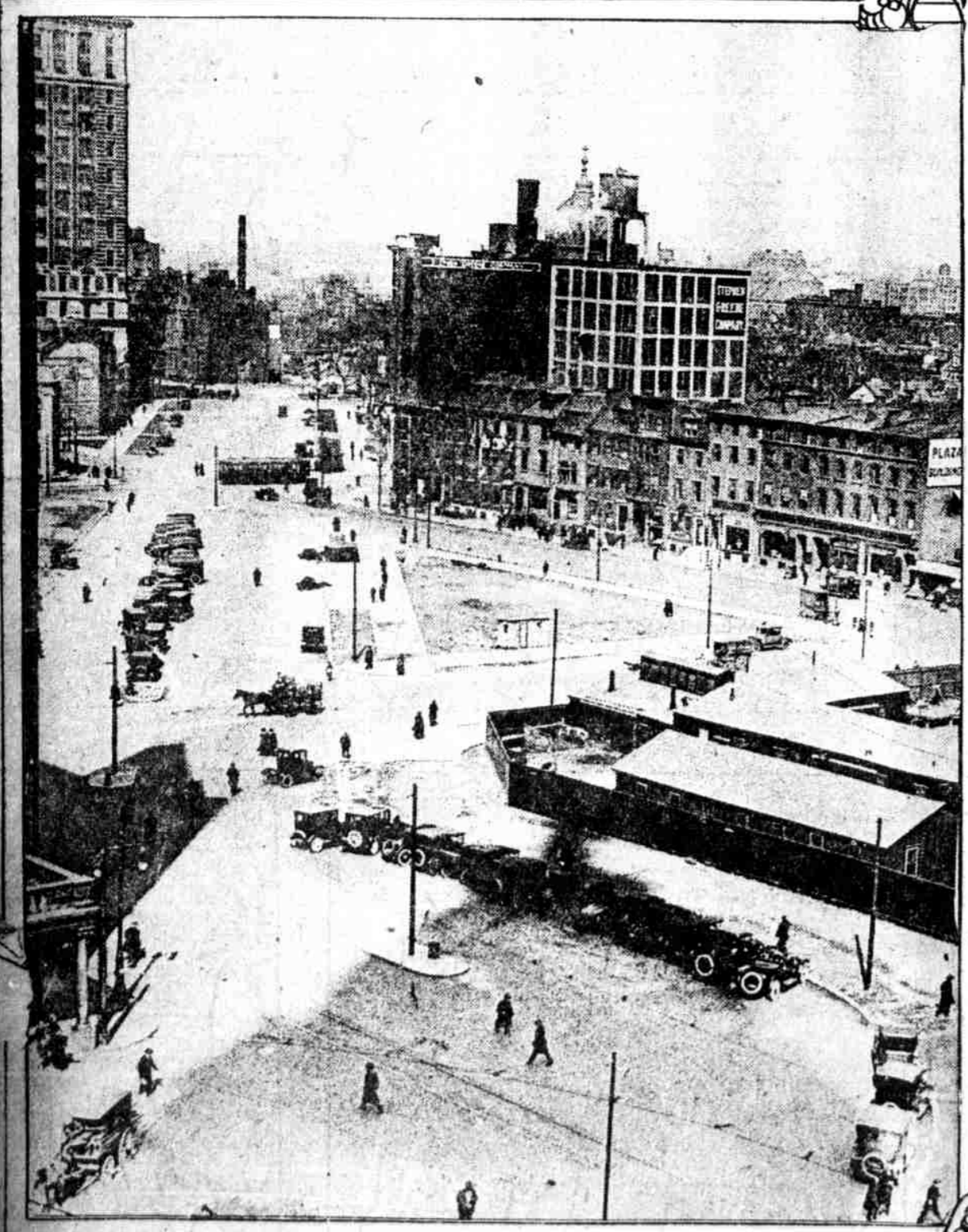


## UNINTERRUPTED PARKWAY AT LAST LEADS FROM CITY HALL TO FAIRMOUNT'S ENTRANCE

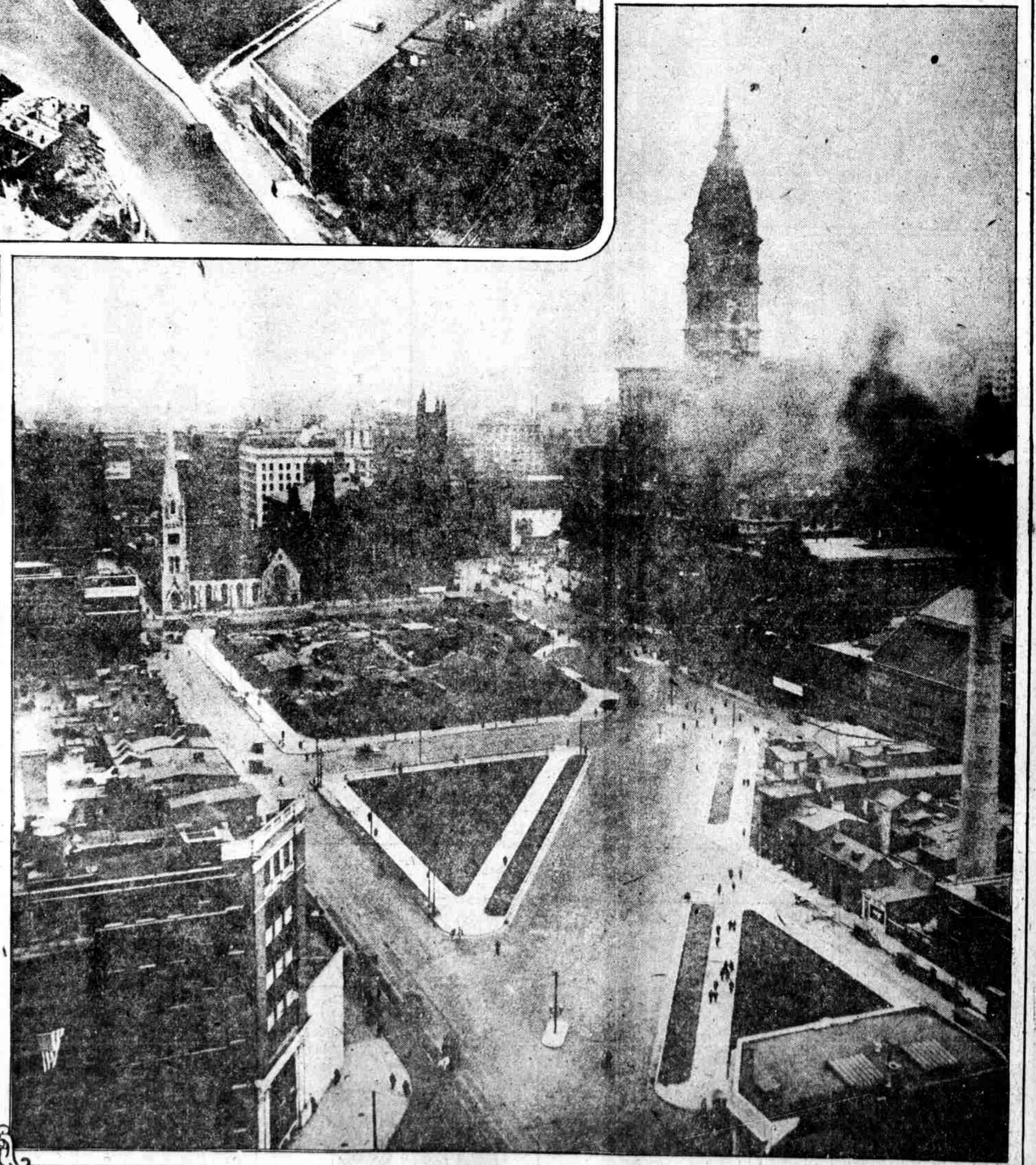


THE PARKWAY LAST MAY, when the Medico-Chi College and Hospital, between Seventeenth and Eighteenth streets, still blocked the driveway.

LOOKING TOWARD FAIRMOUNT PARK. The view from the Bell Telephone Building shows clearly how Logan Square has been transformed into a circle. Intact since the time of Penn., and one of his breathing spaces, it is now almost obliterated by what has been declared the traffic necessities of the development of the driveway at this point.



THE PARKWAY FROM FIFTEENTH AND FILBERT STREETS. The Pennsylvania station at the extreme left of the picture, at the right, the temporary buildings used in connection with the work on the subway loop around City Hall.



LOOKING TOWARD CITY HALL. In the middle distance the square from Broad street to Fifteenth street, and from Arch street to Filbert street, used at present as a storage place in connection with the work on the Broad street subway.