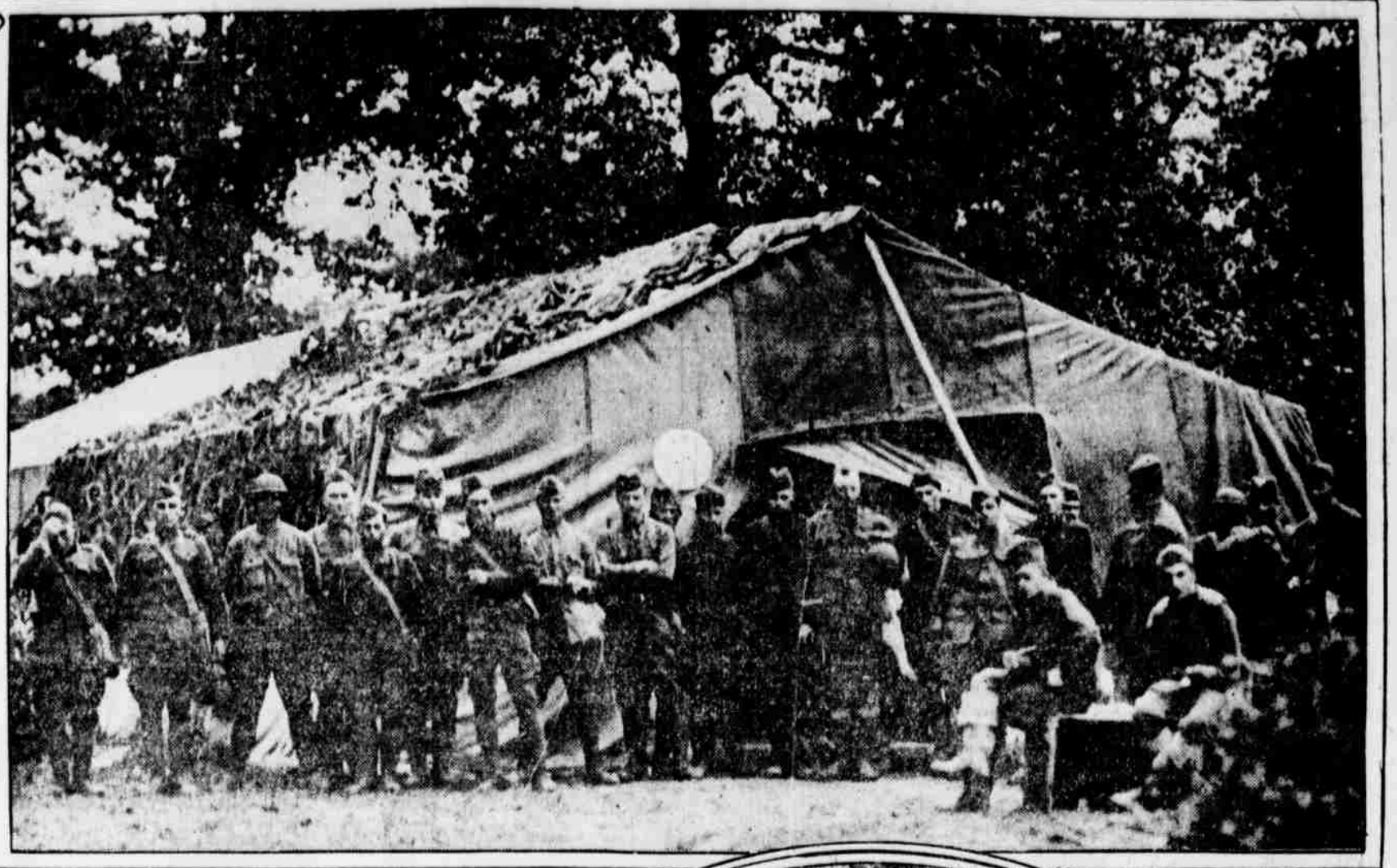


WITH THE SALVATION ARMY WORKERS FROM THE PHILADELPHIA DISTRICT SERVING OVERSEAS



THIS HUT JUST BEHIND THE LINES, where shells fly and battles are fought. Note the camouflage on roof.



ENVOY MRS. SPRINGER, the BATTLE FRONT TAILORESS.



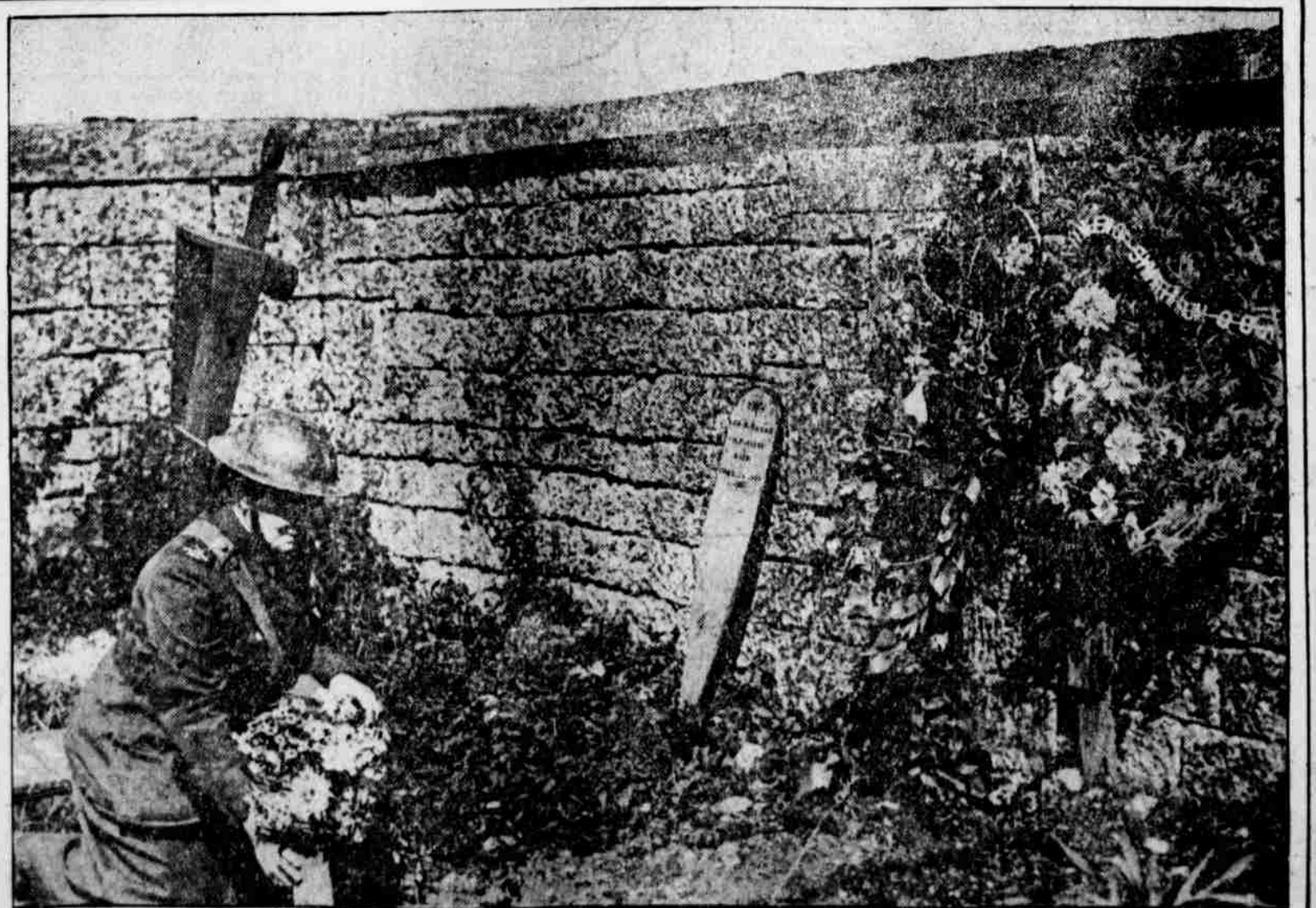
GEN. ROBERTSON, of Philadelphia (at left), in a Salvation Army kitchen close to the battle line.



COLONEL PARKER VISITS ONE OF THE FORWARD HUTS in a shell-torn village, where gas masks and helmets must always be at hand



DOUGHNUTS FOR DOUGHBOYS, made by a Dough Girl in steel millinery.



THE FALLEN ARE REMEMBERED BY MRS. BRIGADIER JOSEPH SHEPPARD, of Newark, N. J., in France two years; for twenty years a Salvation Army worker and well known in Philadelphia.