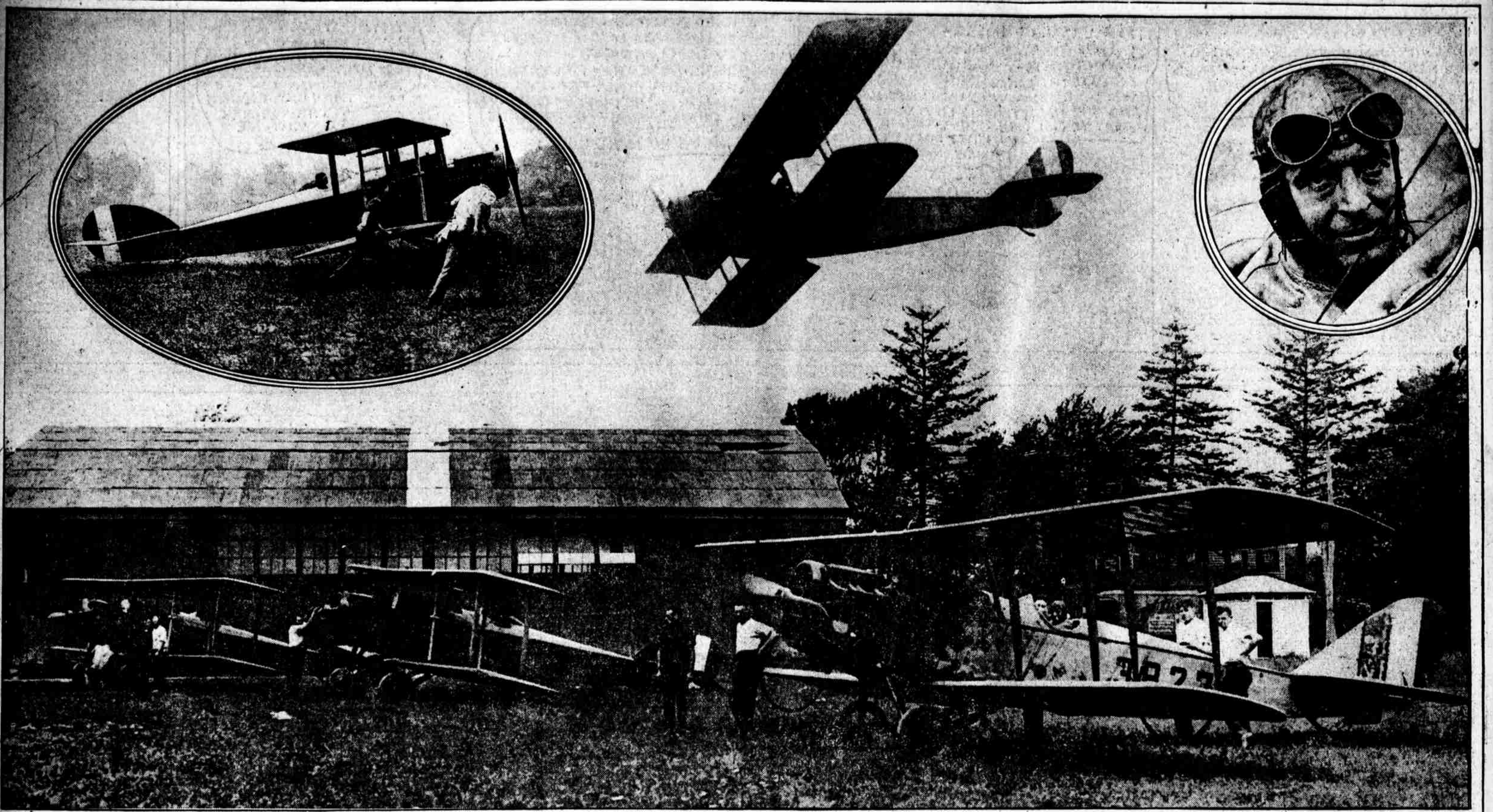


ILLUSTRATING THE DAILY DOINGS AT THE CLEARING HOUSE FOR AERIAL MAIL AT BUSTLETON



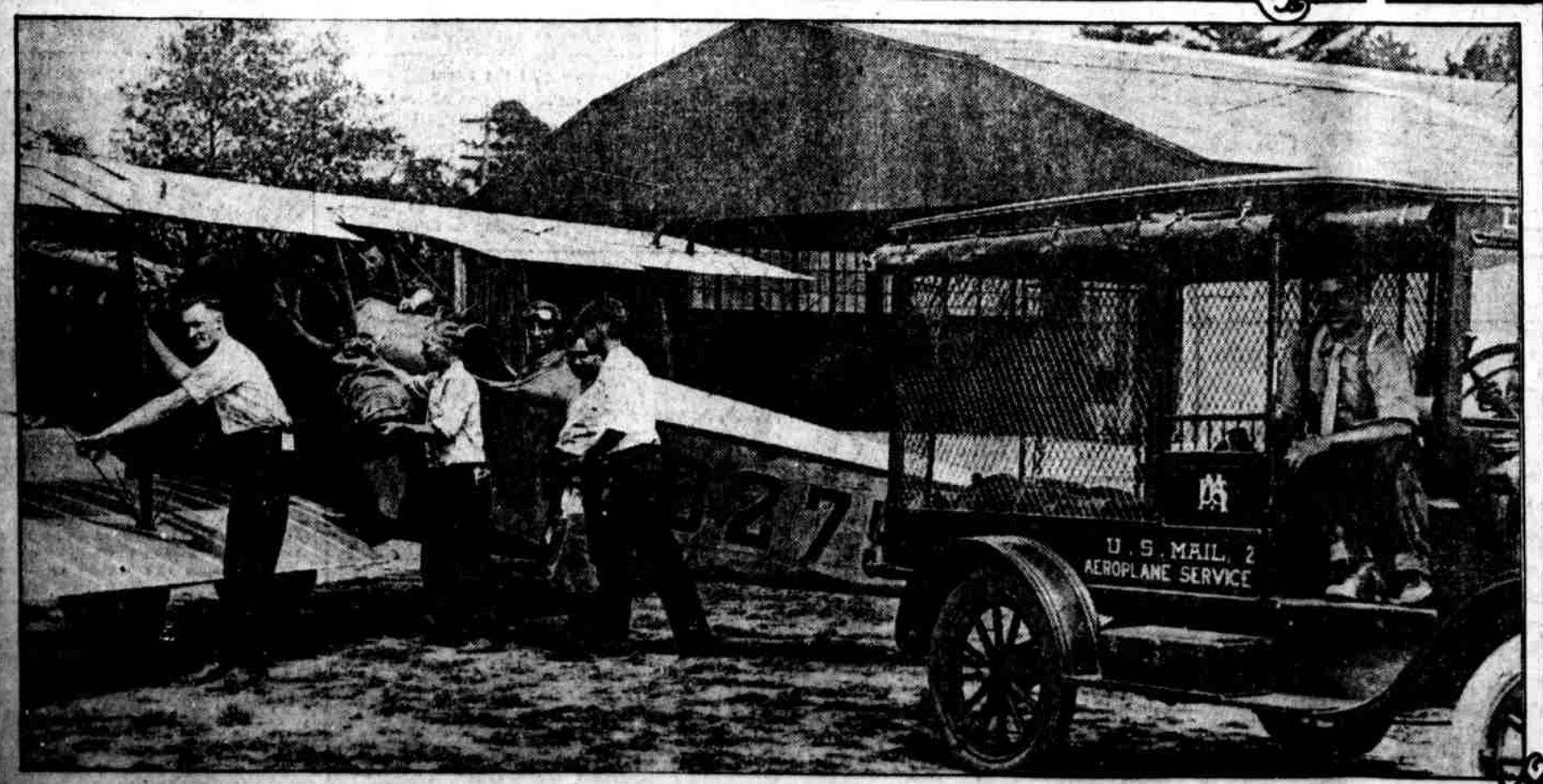
LANDINGS AND DEPARTURES already have lost their dramatic appeal at the Bustleton field, and scenes such as the above are enacted with little stir as the planes settle down or arise in their flights between New York and Washington.



WHILE HIS ENGINE is being overhauled the aerial mailman stills an appetite whetted by his swift journey through the cool atmosphere far above the earth.



WHEN THE CAREFUL INSPECTION of a half dozen skilled mechanics assures him that all is well with engine and plane, the aerial mailman is ready for the second lap of his journey.



THE AXIOM OF THE AIR MAIL SERVICE is speed, which accounts for the fact that no time is lost in transferring the mailbags from mailtruck to autotruck and vice versa.