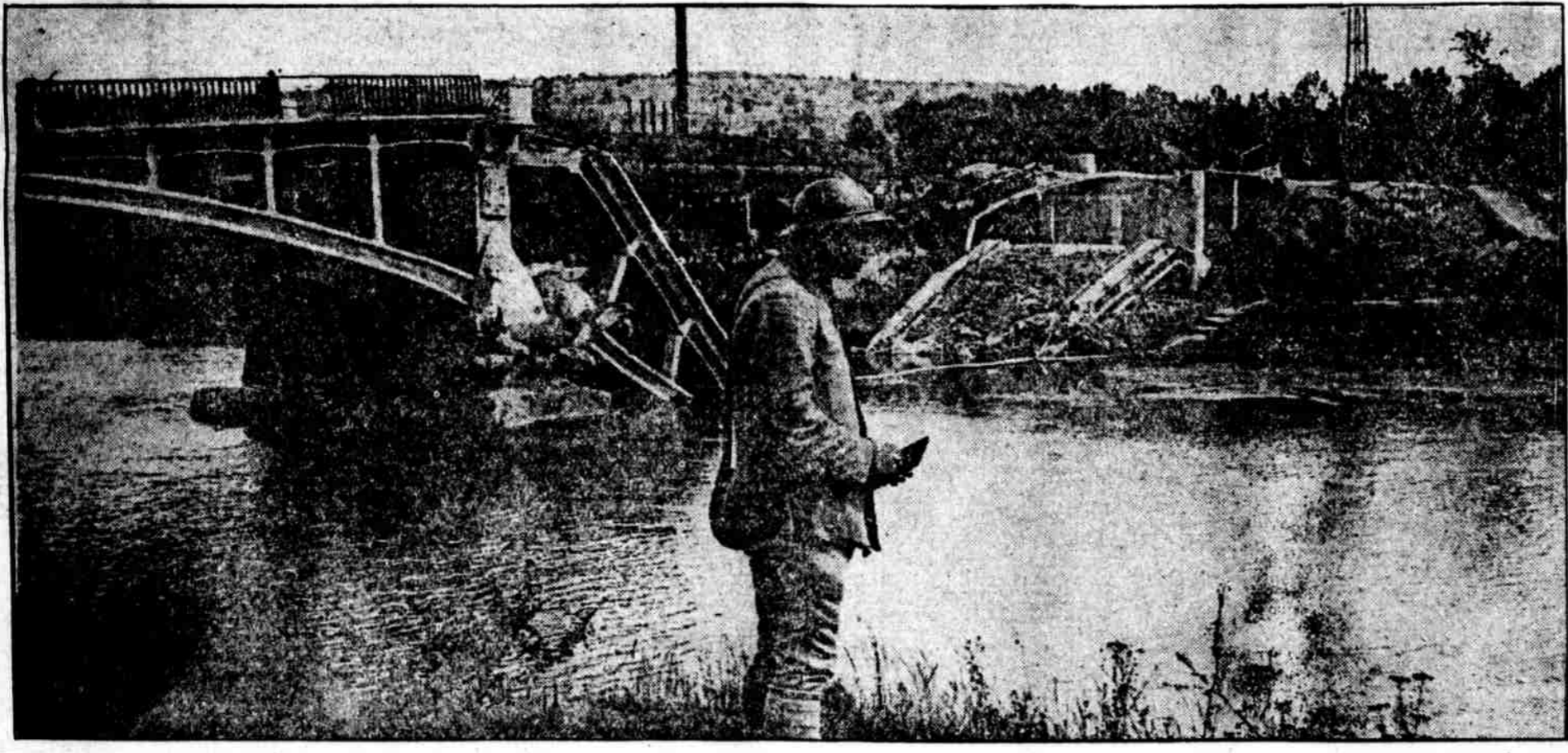


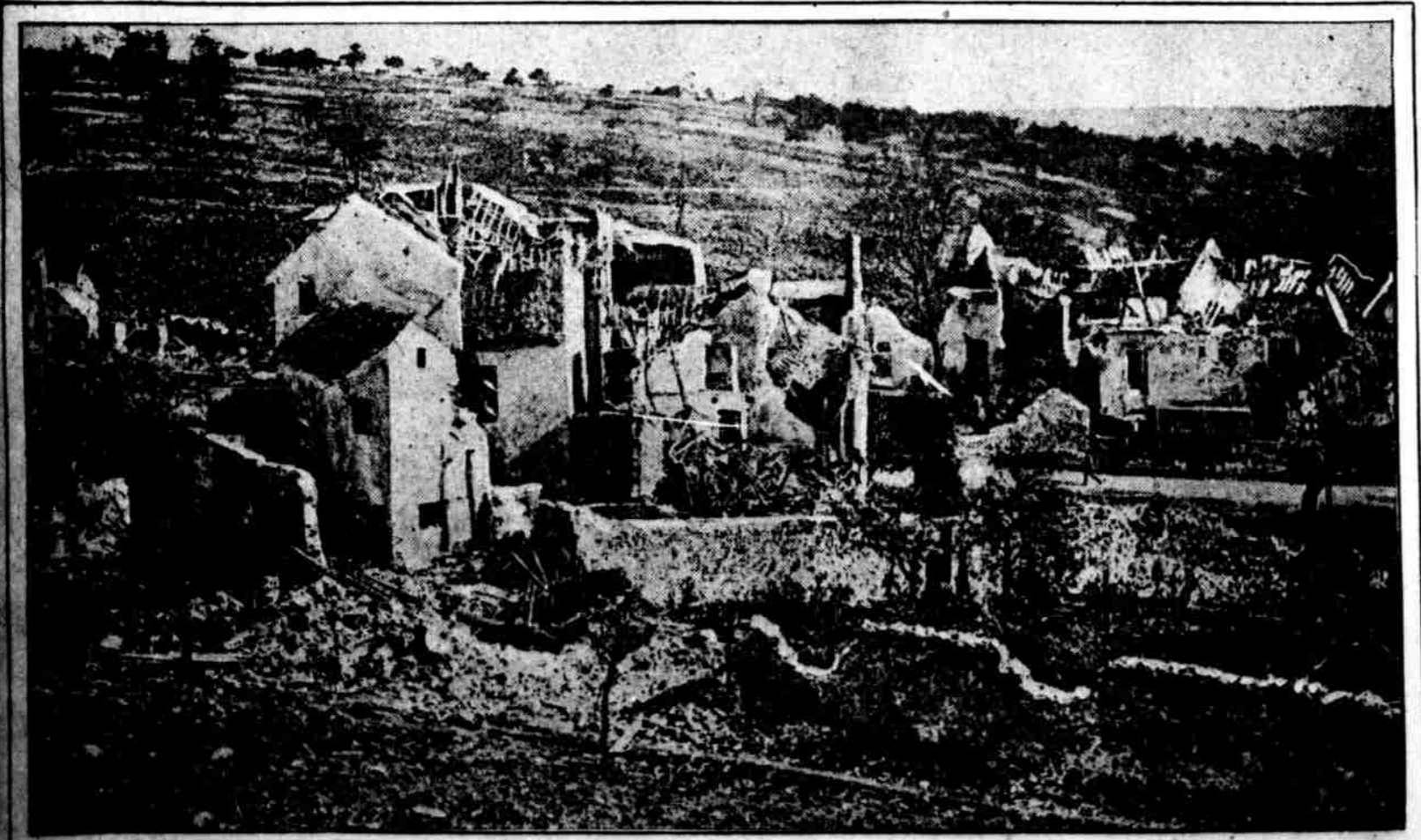
THESE ARE CLASSIC RUINS FOR THE AMERICANS WHO DROVE THE BOCHES FROM THEIR SHELTER



Vaux, After the Americans Captured it.



The Shattered Marne Bridge at Chateau Thierry.



The Ruins of Belleau, Prize of the Yankees



Saint Martin, at the Gates of Chateau Thierry