

Evening Public Ledger

and
THE EVENING TELEGRAPH

Philadelphia, Monday, August 12, 1918

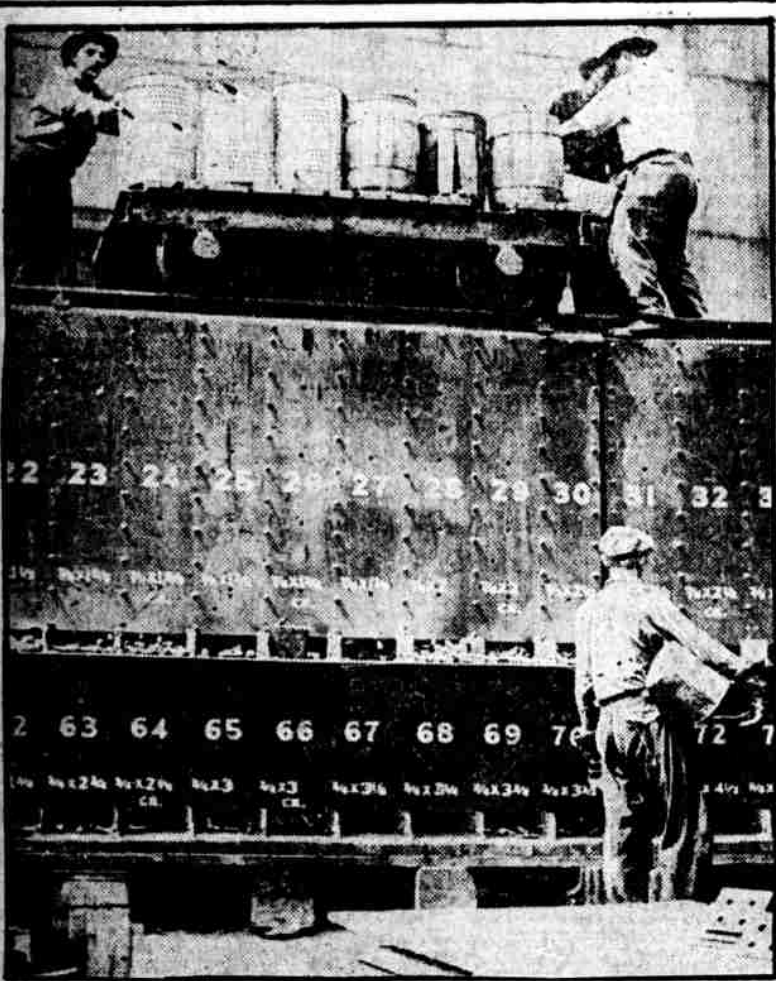
"A PLACE IN THE SUN" IS THE HEIGHT OF THE SHIPBUILDER'S AMBITION DOWN CHESTER WAY



"THE JOY OF THE WORKER IS IN HIS WORKS," 'TIS SAID, but the sunshine of satisfaction illuminates these Chester shipbuilders when they visit the cashier's window to receive their weekly remuneration.



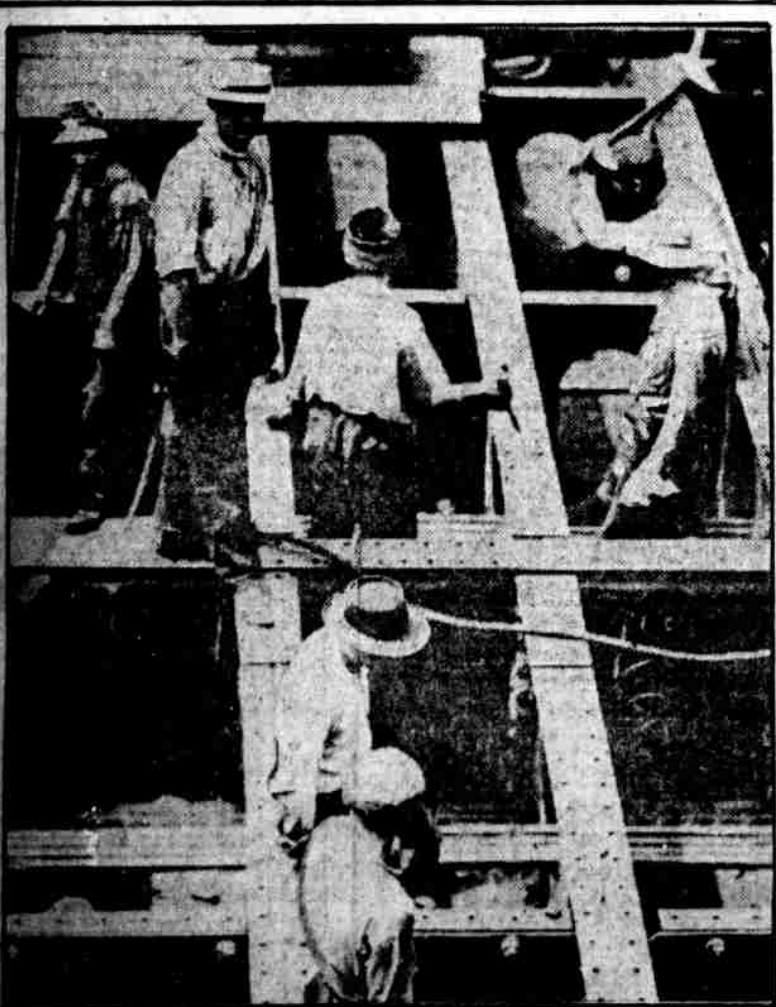
"RIGHT AS A TRIVET" IS HERE TRANSPROSED to "tight as a rivet" by these heroes of industry in America's drive for maritime supremacy.



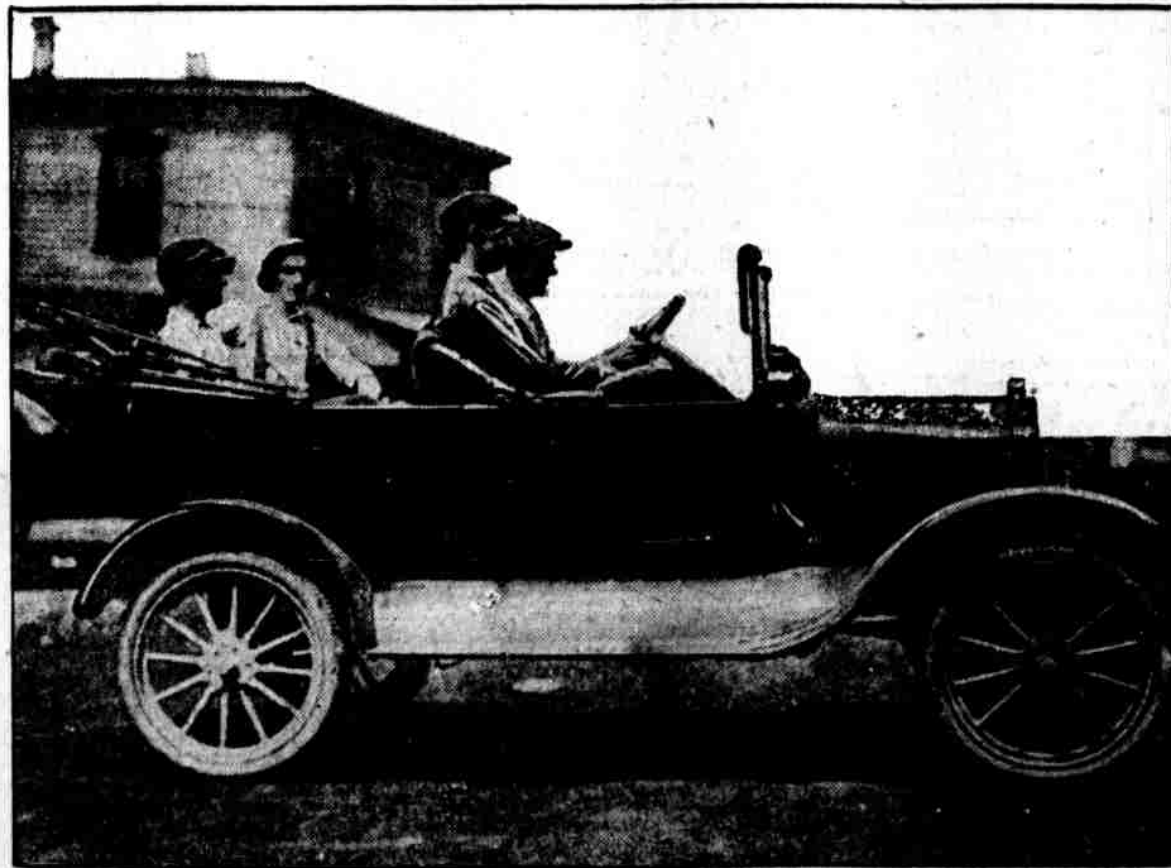
THE FILING CABINET SYSTEM IN USE AT THE SUN PLANT enables the riveter to find "a place for everything and everything in its place." As a timesaver it's a wonder.



THERE'S NO PLACE LIKE HOME WHEN IT COMES TO A MATTER OF COOKING, and this Sun shipyard worker is enjoying a home-made luncheon, delivered by its maker, to the envy of his less fortunate companions.



"RIGHT ON DECK" POSSESSES A DOUBLE MEANING TO A SHIPWRIGHT. He is to be found right there, seeing to it that each bolt and screw—every component structural part—is "right there."



TIME WAS WHEN ONLY A CORPORATION PRESIDENT RODE TO WORK IN HIS AUTO, but today many mechanics motor to the Chester shipyard in their own machines.



GOING TO A NEW JOB IS A REGULAR FEATURE IN THE DAY'S WORK AT CHESTER, so rapidly is the construction of our new commercial navy being pushed ahead. Gangs of men shift from boat to boat in a procession that seems never to end.