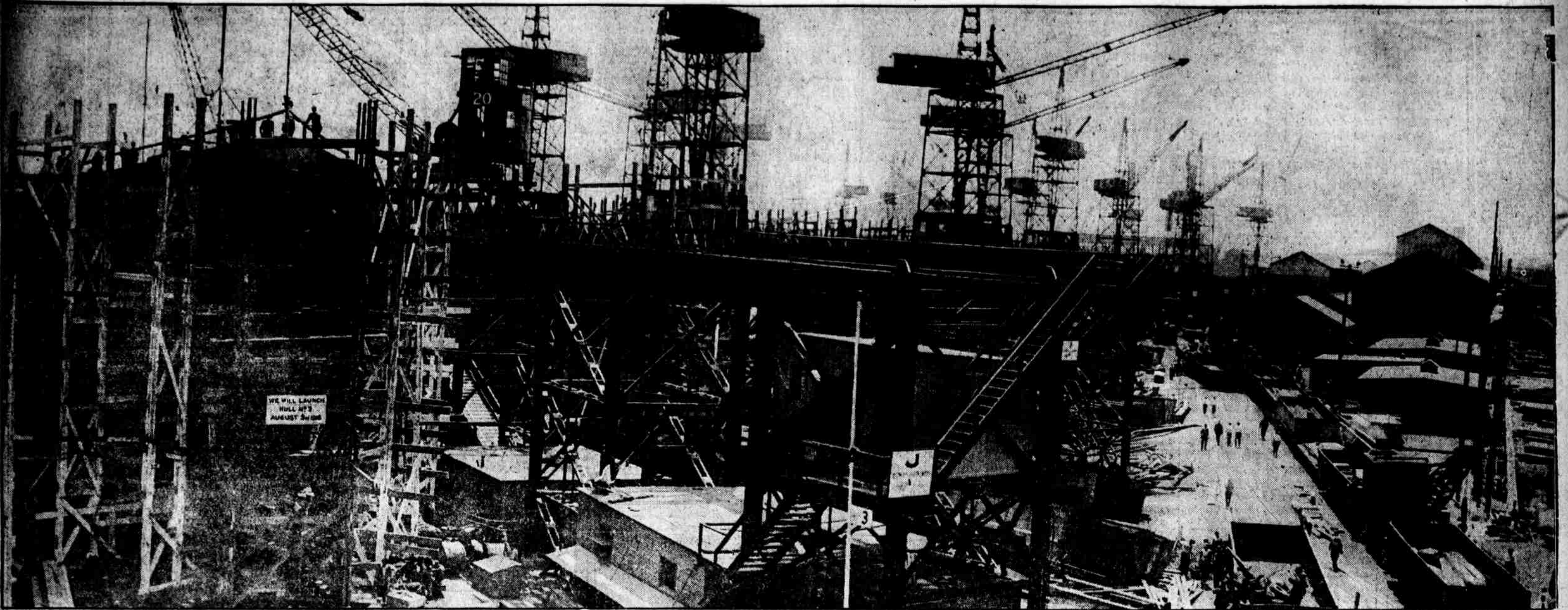


# Evening Public Ledger

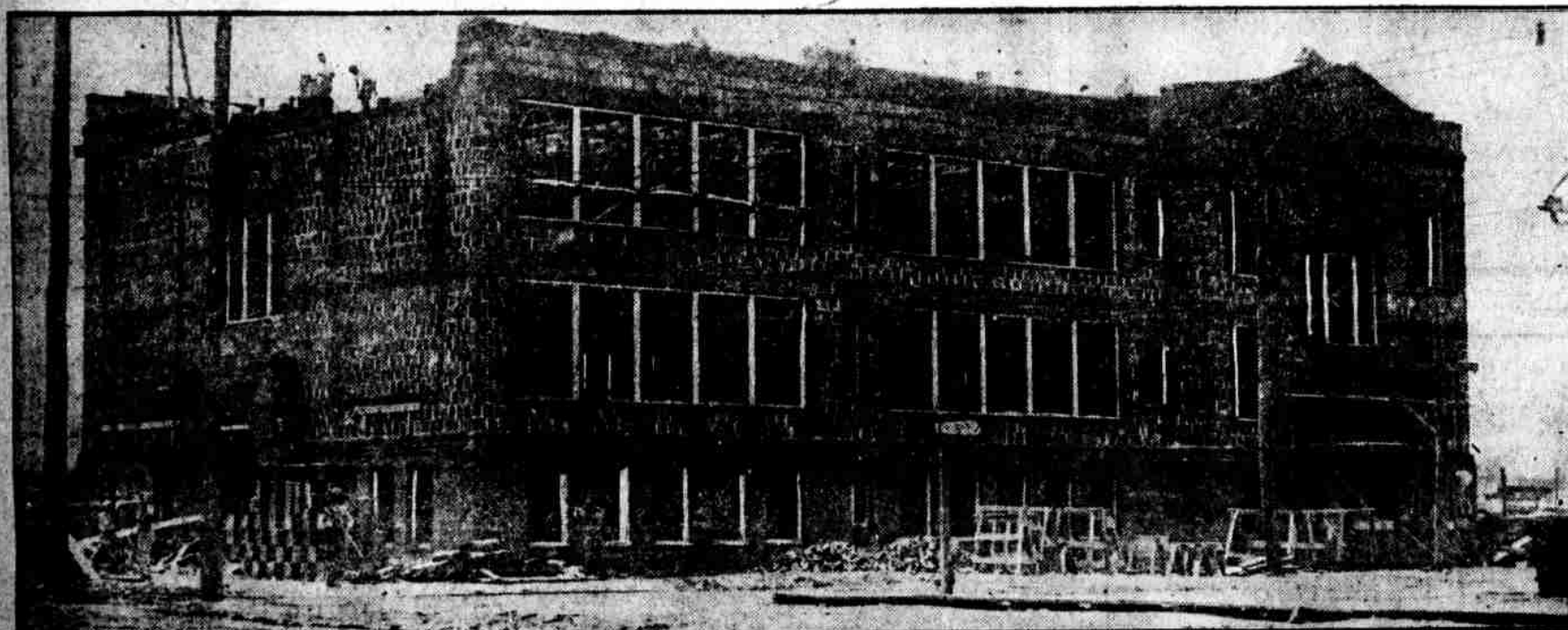
and  
THE EVENING TELEGRAPH

Philadelphia, Saturday, August 3, 1918

FIRST FABRICATED STEEL SHIP BUILT ALONG THE DELAWARE LEAVES WAYS TODAY AT BRISTOL



JUST FIVE MONTHS AND NINETEEN DAYS after her keel was laid the *Watowan*, shown on her ways to the extreme left of the above photograph, slides into the Delaware today.



THE VILLAGE OF HARRIMAN, adjoining the shipyard of the Merchants' Shipbuilding Corporation, at Bristol, is an up-to-date settlement. The photographs above show a view of the shipworkers' comfortable houses and the modern school now in course of construction at Harriman.



PUTTING THE FINISHING touches to the *Watowan*, the 9000-ton cargo carrier, which has the distinction of being the first fabricated steel vessel to be launched at a Delaware River shipyard.



GENERAL VIEW of the shipworkers' village of Harriman, with the plant of the Merchants' Shipbuilding Corporation showing on the extreme left.