

CALLS COAL MEN BIG TAX DODGERS

F. C. Reese, State Official, Says Millions Are Lost in Schuylkill Region

SOME TOWNS BANKRUPT

School Directors and Councilmen Decide to Fight Alleged "Trust"

Pottsville, Pa., July 30.—A county convention of school directors and councilmen at the courthouse were astonished when former Representative Frank C. Reese, presented figures which he said showed that the big coal companies have for years dodged millions of dollars in taxation in this county.

Reese indignantly denied in behalf of the miners that too much alcoholic liquor is hindering the production of coal. He said this is only one of the many "traps" put forward by the operators as an excuse for the nonperformance of their duty to the country.

COMMITTEE TO STUDY NEW REVENUE BILL

Named by Alba B. Johnson, President of State Commerce Chamber

Harrisburg, Pa., July 30.—The Pennsylvania State Chamber of Commerce committee on national tax legislation, authorized to make a comparative study of the new revenue bill now being prepared by the House Committee on Ways and Means, was announced today as follows by Alba B. Johnson, president.

Mr. Plumb is president of the Fayette R. Plumb (Inc.) Company and an authority on corporation tax. A member of this committee attended the meetings of the Ways and Means Committee during June in order to look after the interests of the more than 27,000 manufacturing plants and a large number of commercial houses throughout the State.

TO TRAIN REGISTRANTS

Retired Surgeon General of Navy Heads Committee in Charge

New York, July 30.—The National Security League announced today that Rear Admiral Charles E. Stokes, retired surgeon general of the navy, has accepted the chairmanship of its committee on preliminary training and instruction of men registered for the draft.

Galvanized Boat Pumps

L. P. Berger Co., 89 N. 2d St. Main 1200, Market 221.

GUARANTY INTERNAL GEAR-DRIVE UNIT LIPPICOTT MOTOR CO. MOTOR TRUCKS 2120 MARKET STREET

1, 2, 3 & 5 TONS LIPPICOTT MOTOR CO. MOTOR TRUCKS 2120 MARKET ST.

Philadelphia Textile School THE PENNA. MUSEUM AND SCHOOL OF INDUSTRIAL ART America's Leading Textile School in the Great East. Courses under expert instructors include practical work in designing, carding, spinning, weaving of cotton, wool, worsted and silk; chemistry, dyeing and the general processes of textiles.

Russia's Heart Broken in 1915; Won't Fight Again

By CHARLES H. CRASTY Special Cable to Evening Public Ledger

Copyright, 1918, by New York Times Co. London, July 30.—Americans arriving here from Russia agree in the belief that that country will not participate in the war again on either side.

"Russia's heart was broken in the defeat late in 1915," said one. "She was so big that there were enough shattered remnants to create an impression of activity for some time afterward, but her strength declined steadily. If the Allies strike a hard blow on the western front within a few months it will paralyze the German tentacles in Russia."

Ambassador Francis is reported well and optimistic. He said a short time ago that he purposed staying in Russia if he had "to live on wheels."

BETTING SYSTEM PIONEER HELD

George Graham Rice Charged With Using Mails to Defraud

By the Associated Press

New York, July 30.—Jacob Simon Herzog, better known as George "Grimace" Rice, who first gained notoriety by founding the mythical firm of "Maxim & Galt," which was the pioneer in supplying advice on the one-horse bet in horse racing, was arrested here last night by United States marshals on the charge of using the mails in a scheme to defraud. He was released in \$15,000 bail for a hearing.

Rice has been involved in other financial enterprises, with nation-wide ramifications, some of which resulted in prison sentences. According to the Federal authorities, he started a brokerage business in this city about six years ago and claims to have 53,000 customers, 125 employes and office expenses of \$200,000 a year.

The specific charge on which the arrest was made is that last January he defrauded \$72,225 from R. W. Hartman, of Mansfield, O., through the mail for several shares of American Car and Foundry Company, which, it is alleged, he never sent Hartman.

EHRET TO FIGHT SEIZURE

New York Brewer to Institute Proceedings for Return of Property

By the Associated Press

Washington, July 30.—George Ehret, a brewer in New York, whose estate, estimated to be valued at \$10,000,000, recently was taken over by Allen Properties, a trust controlled by the late John D. Rockefeller, is seeking recovery of his estate which was seized while she was in Germany.

APPEAL FOR AUTOMOBILES

Kensington Neighborhood House Lacks Vehicles for Picnic

Several more motorcars and automobiles are needed by Mrs. M. W. Ketchum, financial secretary of the Kensington Neighborhood House and Richmond Soup Society, to accommodate the picnic at her annual picnic to Fairmount Park tomorrow.

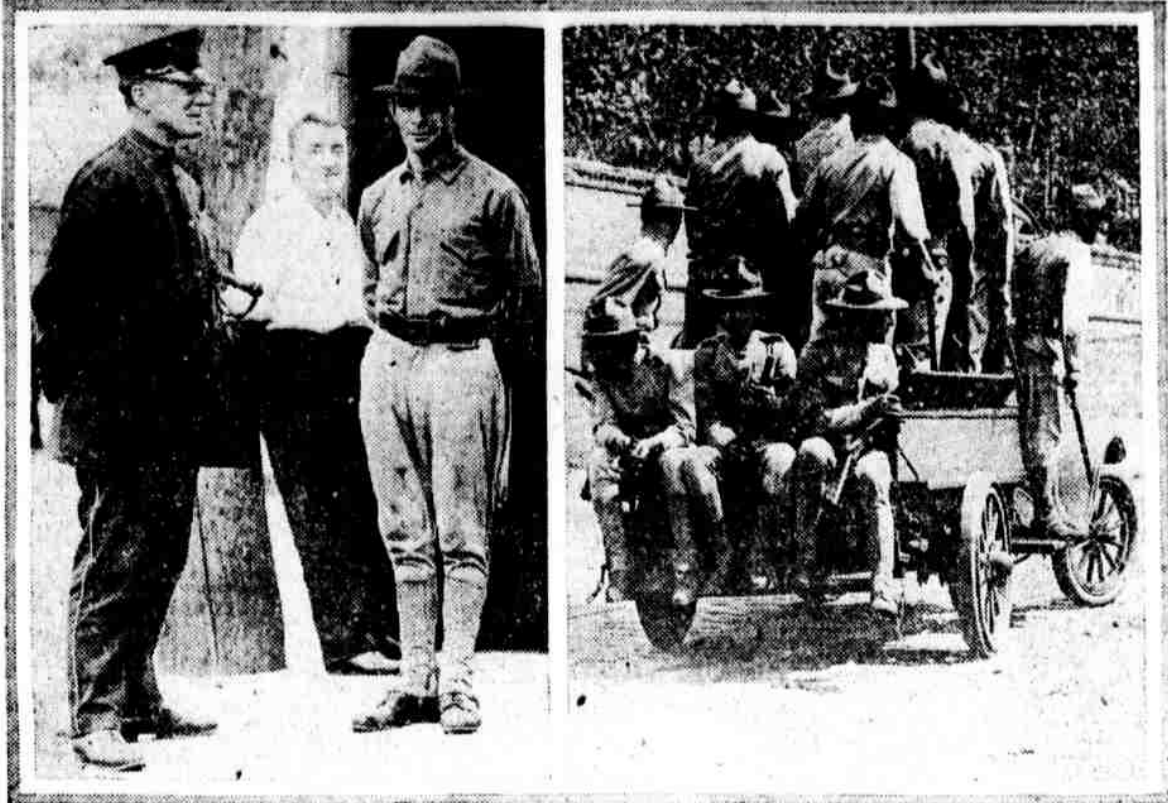
REPORT KERENSKY IN U. S.

Naval Man Says He Crossed With Russian Ex-Premier

Chicago, July 30.—(By I. N. S.)—Alexander J. Kerensky, former premier of Russia, is in the United States, having arrived incognito on a recent steamer, according to telegraphic word received here from John A. Haggerty, a naval gunner, who says he was a fellow passenger of the Russian statesman.

The telegram addressed to William H. Burquest, associate editor of Domestic Engineering, and published in the Chicago Herald and Examiner reads in part: "Passenger with Kerensky on—, attacked off Irish coast afternoon eighteenth. Great liner Justicia torpedoed. Attacked again at midnight same day. No casualties. Kerensky calm. Traveling incognito."

MARINES ON LOOKOUT FOR RIOTERS



Under the watchful eyes of marines and bluecoats, the disorders in South Philadelphia have been about ended.

GERMANY HURLS MILLION MEN INTO GREAT BATTLE

Gigantic Force Makes Mere Dent in Allied Front, While Foch Presses on for Gains at Various Points

By the Associated Press

The Germans have thrown nearly a million men into the gigantic battle between Soissons and Rheims and have been viciously counter-attacking all around the circular line that stretches from Soissons to the neighborhood of Rheims.

Even this formidable force, however, appears to have made not more than a dent or two in the Allied front in its latest effort, while at various points progress for the Allies, slight but important, is reported.

Regarding the strength of the German forces, unofficial advisers state that there are seventy-one Teuton divisions engaged in this struggle. The strength of a German division is about 13,500 on a normal footing, so that if all the units residing the Allies north of the Marne have been kept up to standard, there are 958,000 men trying to hold the line until the situation is relieved of these divisions there are ten drawn from the Crown Prince Rupprecht's army in the north.

The German crown Prince had in the neighborhood of 500,000 men between Rheims and Chateau-Thierry when the attack across the Marne began on July 15. The increase in the number of divisions engaged in the battle would appear to indicate that he had since that time drawn heavily on other army groups. It would also seem that this action on his part reflects the importance of this battle in the eyes of the German high command.

Through the German counter-blow, the Americans were driven back from Clermes, southeast of Eper-en-Tardenois, while to the northwest of Eper, the Americans have also been forced out of Rougemont, into which they had penetrated after passing through Grand Rozoy.

Buzancy, situated on the west side of the Clermes river about five miles south of Soissons, has also been the scene of heavy fighting, and the battle appears to have been general along the entire south of that point, notably in Plessier Wood, near where the front turns abruptly to the east. On the other end of the battle line there have been sharp engagements but reports credit the Allies with making an advance at Aubilly, in the Ardre valley, west of Rheims. They have also forced ahead further down toward the bottom of the pocket, at Villers-Agron-Aiguizy.

Allied Views Differ While these counter-blows against the Allied lines are general and of great violence, it is not believed in London that the enemy intends to make a real stand south of the Vesle River. Paris, on the other hand, seems to believe that the Germans may have fixed upon the present location of

WANTS R. R. BRIDGE SPEEDED

Mayor Complains of Delay at Span Over Island Avenue

Mayor Smith sent a telegram to Secretary of War Baker yesterday calling attention to the fact that the construction of the bridge over Island avenue, on the line of the Philadelphia, Baltimore and Washington Railroad, under contract by the city and railroad companies, had stopped because of the commandeering of material by the officials of the High Island shipbuilding plant. All troop and Government freight movements from the south to Philadelphia and New York go over the trestle used as false works, and the Mayor asked that the War Department act through the railroad regional director to stop interference by the Emergency Fleet Corporation, as the work is essential for the safety of troops.



FRANCIS MOVES, SAYS REPORT

U. S. Embassy Declared Transferred from Volgodia to Archangel

By the Associated Press

Washington, July 30.—Unconfirmed reports reached the State Department today that Ambassador Francis has moved his headquarters from Volgodia to Archangel. No direct word has been received from Mr. Francis and the Department has called him regarding the report.

Conflicting reports regarding the presence of German troops in Moscow have reached the State Department. From one source comes information that Nikolai Lenine, the Bolshevik premier, has admitted that the Germans are sending troops to guard the Russian embassy, while reports from another source deny this. Department officials are satisfied, however, that a certain number of German guards are in Moscow.

Whitman's advertisement for Luncheon, Ice Cream, and Candies. 1716 Chestnut St.

SUGAR RATIONS CUT TO HALF POUND EACH

Food Administration Announces New Restrictions on Weekly Allowance

New restrictions in the use of sugar just announced by the food administration allow but one-half pound per person per week.

Consumers are notified that their supplies for August are not only unusually small, but will be delayed in reaching them, so they are advised to make the amount now on hand go as far as possible.

Cargo ships, used in the sugar trade between here and Cuba, are scarce and it is impossible to maintain the normal supply. As a result, manufacturers using sugar in less essential industries may be further limited.

Two pounds for each ninety persons served is the allotment allowed restaurants and other public places.

Sugar for canning and preserving may still be purchased on certificates issued by process.

Any person who attempts to violate the regulations runs the risk of having to go without sugar entirely.

J. J. Bradley, Undertaker, Dead

John J. Bradley, who has been engaged in the undertaking business a quarter of a century at Forty-eighth street and Wyalusing avenue, died today after three months' illness.

Mr. Bradley was a member of many organizations including the Knights of the God Branch, of which he was supreme chief, the Knights of Columbus and the Ancient Order of Hibernians. He was fifty-six years old. Mr. Bradley is survived by his widow, his son, John J. Bradley, Jr., and four daughters.

Perry Summer Suits advertisement. In Full Blast Today! The Big Reduction Sale of PERRY SUMMER SUITS. (Formerly \$20 to \$45) at further savings from their already low regular Prices! We will sell

Bailey, Banks and Biddle Co. advertisement. 1832 Jewelers 1918. Gift Selections. Jewels, Gold, Silver, Watches, Clocks, Swords, Memorials. \$40 & \$45 Suits Big Original Value NOW \$32.00 and \$35.00. \$35 Suits Big Original Value NOW \$28.00. \$28 & \$30 Suits Big Original Value NOW \$22.00 and \$24.00. \$25 Suits Big Original Value NOW \$19.00. \$20 Suits Big Original Value NOW \$16.50.

Get these TWO POINTS clear in your mind—First—These Reductions are on the Finest Clothes made; and Secondly, are from Prices already remarkably low! We're doing it to clear decks. We're doing it to make room for the Fall and Winter. We're doing it, also, because these Reductions will help to introduce our Clothes, with the merits of fit, workmanship, style, distinctive of Perry's, to numbers of new customers who have been looking for just such qualities in a Suit of Clothes.

For Tropical-Weather Wear "Breezewe" Suits \$10 and \$12. We can't replace them at the prices! Palm Beach Suits \$7.50 to \$15. Wide variety of colors and patterns and a Big, Solid Saving in Price! Suits of White Basket-Weave Serge \$18. Very "swell", and also very reasonable! Outing Trousers, \$6.50 to \$10.

Perry & Co. "N. B. T." 16th and Chestnut Sts. Closed Daily at 5 P. M. Saturdays at One P. M. During July & August.

The NOISELESS TYPEWRITER advertisement. "She's More Valuable Than Ever Before". SHE'S always been a mighty faithful girl, but recently she's been helping me more than ever. In the old days she used to work in the outside office because I couldn't stand the rat-tat-tat of the noisy typewriter. "You know what that means. Always yards away when I wanted her most—never near enough to answer the telephone—just a typist instead of a private secretary. "But all that was changed the day we installed the Noiseless Typewriter. Now she works right at my elbow, yet unless I watch her hands I hardly know she's typing. "The Noiseless has increased her efficiency—and mine, too—fully 50%. More work—better work—quicker work—that's the answer." Write for booklet—"The Typewriter Plus" The NOISELESS TYPEWRITER. THE NOISELESS TYPEWRITER COMPANY, 835 Chestnut St., Philadelphia (Phone, Walnut 3691)

Hallahan's GOOD SHOES advertisement. Market Street Store Opens 9 o'Clock, Closes 5:30 CLOSED ALL DAY SATURDAY DURING AUGUST. Mid-Summer Clearance of Women's Pumps & Oxfords. At 3.85 Formerly to \$6.50. At 4.85 Formerly to \$8.50. 919-921 MARKET STREET. 60th and Chestnut Sts. 4925-30 Lancaster Ave. 2746-48 Germantown Ave. 5604-06 Germantown Ave.