

# EVERY MEMBER OF THE EVENING PUBLIC LEDGER

Philadelphia, Tuesday, June 18, 1918

## LIVELY SCENES OPEN WOMEN'S CHAMPIONSHIP TENNIS MATCHES AT ST. MARTINS—WOMEN AID WAR WORK



PROMINENT AMONG THE CONTESTANTS for national championship honors is Miss Eleanor Gross.



THE FIRST DRAW for the woman's championship, preliminary round, consisted of Miss Margaretta Dixon and Miss Rebecca Thomson, of Philadelphia fame.



MISS ELEANORA SEARS, of Boston, is regarded as one of the most formidable rivals of Molla Bouverie in the varied events.



AS AN INFORMAL TEST of precision, Mrs. De Forest Candee hit the lens of the camera squarely with her ball.



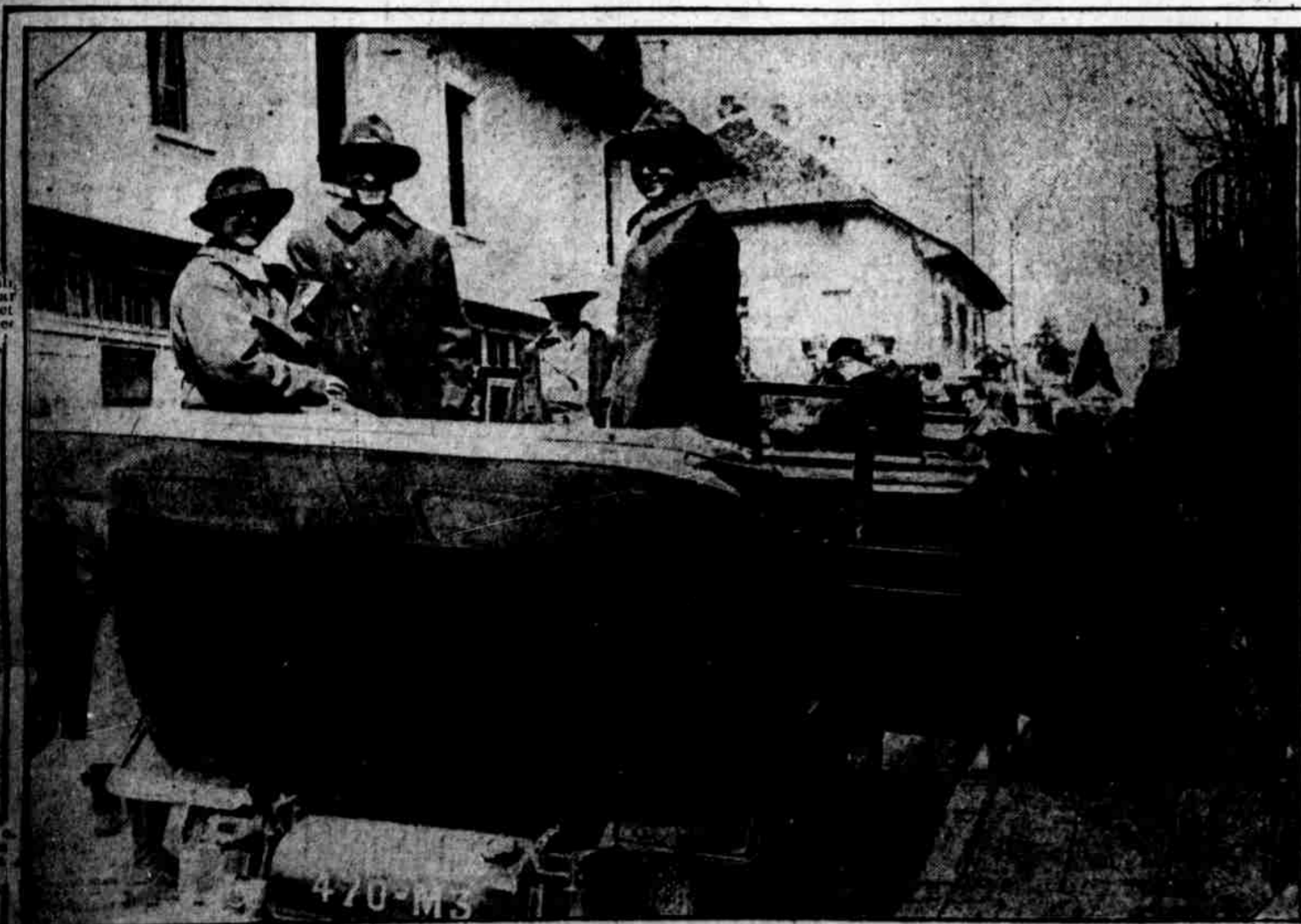
ONE OF THE MOST STRENUOUS PLAYERS is Miss Marion Zinderstein, of Boston.



AMERICA'S ATHLETIC YOUNG WOMANHOOD was assembled in imposing and charming array at the clubhouse of the Philadelphia Cricket Club at St. Martins before the preliminary games drew all to the courts.



A "MEATLESS MEAT" has been made from the soy bean for Uncle Sam by Dr. Yamel Kin in her New York kitchen. International Film Service



THE GIRLS OF FRANCE take good care that Uncle Sam's soldiers have a bully good time on their brief furloughs. French Official Photo (c) Underwood & Underwood



AS CLEVER AS THEY ARE PRETTY, these French girls are aiding in camouflage work to puzzle and defeat the Germans in their offensive. French Pictorial Press