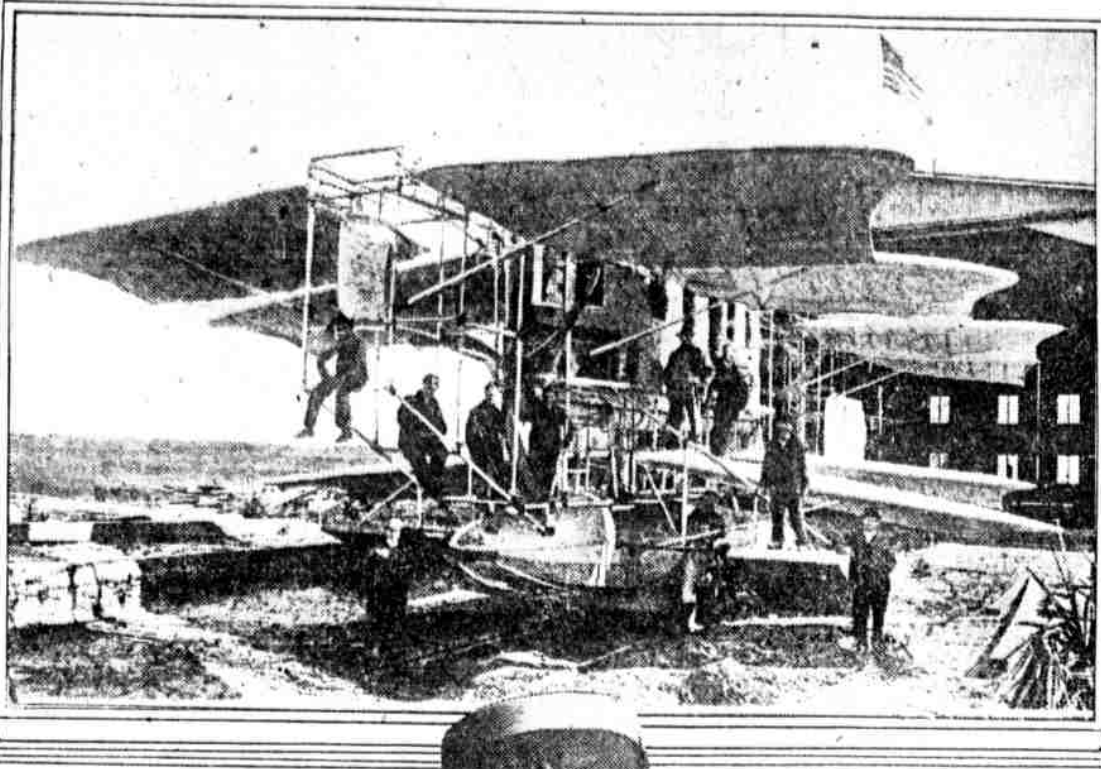


AIR TANK STOLEN FROM AMERICAN

Germans' Latest War Device Resembles Invention of Capt. Batson. KAISER TRIED TO BUY IT. Luffbery's Fate Recalls Efforts of Army Man to Have U. S. Adopt Machine

Savannah, Ga., May 23. The German "air tank" which downed Major Raoul Luffbery, American ace, on May 19, after a sensational battle over the American lines in Picardy, is not a new aerial development, and evidently is modeled much after an invention of an American army officer, which the German government tried to buy five years ago.

GIGANTIC FLYING MACHINE NOT NEW THING IN U. S.



A gigantic flying machine, which according to news dispatches describing the new machine of the air in France, was very similar to the German armored flying machine, which some reports say was invented by the late Captain Matthias A. Batson, United States army, retired, a Spanish-American war hero.



The German battleplane which downed Major Luffbery was not radically different in design from the great flying machine designed by an American army officer five years ago. This man and his inventor, the late Captain Matthias A. Batson, are shown above.

MUST GIVE ESTIMATE OR RECEIVE NO SUGAR

Manufacturers Told to State Needs to Food Administrator

Manufacturers of the sugar requirements of manufacturers were told to report their needs to the food administration before June 1, and the report will be used to determine the amount of sugar to be distributed.

CLOSE PENROSE FERRY DRAW

Restriction Taken to Relieve Drift of Hog Island Workers

The draw of Penrose Ferry bridge crossing the Schuylkill River, will be closed to all river traffic except loaded ocean-going steamships and city and noise boats, between 6:30 and 7:15 a. m. and 6:45 p. m. beginning tomorrow.

TRY NAVY SHOW TODAY

Rehearsal of "Off to Sea" to Be Staged at Forrest Theatre. A rehearsal of "Off to Sea," a proposed comedy by M. Rowley T. S. N., was staged at the Forrest Theatre this morning.

USE OF WHEAT SUBSTITUTES NO WORRY FOR HOUSEWIVES

Advent of State College Demonstrators Has Added Long List of New Bread Recipes for Those "50-50" Cereals

MANY Philadelphia women who feel deeply the sense of duty to economize have added a long list of recipes to their store since the advent of the State College food demonstrators.

After the food administration rule that equal quantities of substitutes must be bought with every purchase of wheat flour became operative, a real problem presented itself to the housewife, who saw an endless collection of books gathering on her kitchen shelf filled with recipes for which she had no earthly use.

HAZLETON MAN LOST

Hazleton, Pa., May 23.—Mrs. Ann McGeehan of Hazleton has received letters confirming news that her son, John McGeehan, lost his life when the Philadelphia fire boat was sunk by a submarine during February, one of the world's worst disasters.

TO ENFORCE FOOD ORDERS

Charles Biddle Appointed Director for This District

Appointment of Charles Biddle, of Philadelphia, as director of the enforcement division of the food administration for this district, was announced today by Herbert Hoover, national administrator.

COL. GUFFEY SENDS GREETING

Uncle of Defeated Candidate Congratulates Judge Boniwell

Colonel James M. Guffey, uncle of Joseph F. Guffey, the defeated candidate for the Democratic gubernatorial nomination, has wired his congratulations to Municipal Judge Boniwell.

NEED MECHANICS FOR PLANES

Men Between 18 and 30 Wanted for Naval Aero Section

Men between the ages of eighteen and thirty years will now have a chance to join the aviation section of the naval reserve. An order requesting the office in this city to recruit men skilled in mechanics was received here today.

Folk Want Stone's Toga

St. Louis, May 23.—Former Governor Folk has announced his candidacy for the Senate to fill the late Senator Stone's unexpired term.

Big Values in Pumps

For the Little Miss and Her Sister HERE is your opportunity to provide your little ones with seasonable and sensible footwear that will look well—and at economical prices.

Downstairs Department

The Petite Pump, Bull Calf or Patent Calf \$4.50 White Reinskin... 3.50 Sizes 2 1/2 to 7

Ladies' Phoenix Silk Hose \$1.35. All colors. Full fashioned reinforced heel and toe. Introducing our new Ladies' Hosiery Department.

Walter S. Becker Himself. One Store Only 1118 & CHESTNUT STREETS

For Rent or Sale WHEEL CHAIRS for Invalids. We also fit Arch Supporters, Elastic Hoop, Abdominal Belts.

The Philadelphia Supply Co. of Phila. N. W. Cor. 10th & Sansom Sts. Call phone or write for catalog. Headquarters for Invalids and Skeletohm Supplies.

DALSIMER STANDARD SHOES

Big Values in Pumps For the Little Miss and Her Sister. HERE is your opportunity to provide your little ones with seasonable and sensible footwear that will look well—and at economical prices.

Not yet losing hope, Captain Batson hurriedly began the construction of a

Whitman's which since 1843 has meant "Quality Candies" now also means "Quality Luncheon and Afternoon Tea."

'Tis a Feat to Fit Feet. 1204-06-08 Market St.

Dalsimer THE BIG SHOE STORE

BONWIT TELLER & CO.

The Specially Shop of Originations. CHESTNUT AT 13TH STREET. Have Arranged for Today (Friday) A Most Exceptional Sale

Misses' Suits, Coats and Dresses

Department 4th Floor. At Greatly Reduced Prices

Misses' Tailleur Suits. 45 Suits in serge and checks, tailored and sport models, sizes 14 to 18 years. Only one or two of any style. Values to 39.50. \$15.00

Misses' Street and Sports Suits. 65 Coats in serge, gabardine and burella for street, sport and general utility; sport and street shades. Sizes 14 to 18 years. Values to 35.00. \$15.00

Misses' Tailored and Street Frocks. 55 Serge Frocks, tailored for street wear, navy, tan and black, one or two of a style or color. Sizes 14 to 18 years. Values to 35.00. \$15.00

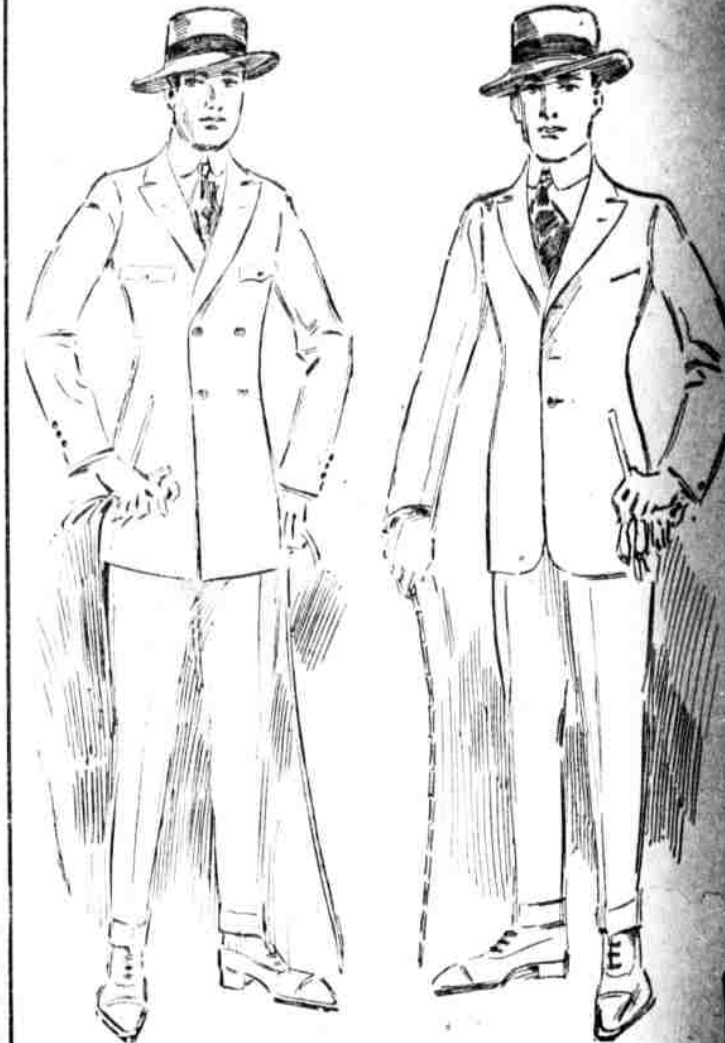
Summer Frocks. Developed in georgette, plain and printed chiffon, organdies, tissues, English voiles, linen, gingham and calico modes for street, day wear, dance, dinner and porch wear.

15.00 18.50 39.50 55.00

To Get a Run for Your Money

You Must See These PERRY SUMMER SUITS

at \$20, \$25, \$30 and \$35



Perry's DOUBLE-BREADED MILITARY MODEL. New Concave Military Shoulders; long lapels; top pockets flapped, bottom pockets slash-ed; snug waist lines; five-cream back.

Perry's "YOUNG MEN'S" THREE-BUTTON MODEL. For slim, athletic figures. The new Concave Military Shoulders; slanted side pockets—close-fitting coat, many with brilliant silk linings.

They are worth more than those Prices today. When we replace them, we shall have to sell their duplicates at higher figures.

At \$20—a wide variety of good substantial Summer Suits in a number of attractive warm-weather patterns—grays, bluish grays, and novelty mixtures.

At \$25—Young Fellows' Models with a lot of snap and style in their lines; and plenty of cuts and patterns for quiet, sober tastes.

At \$30 and \$35—Note the two-tone iridescent silk coat linings—give their fine inside finish the once over—observe how the seam edges are piped, how neatly they are "Felled"—imagine the comfort of such tailoring on your back of a close and warm day!

At \$30 and \$35—Compare these fabrics and these patterns of character and refinement with any others anywhere at the same price, or a few dollars more!

For, that's the only way to know that your good money has bought you the best value in the market—compare them ALL with Perry's from every point of view!

PERRY & CO. "N. B. T." 16th & Chestnut Sts.