

## THE NEW YEAR DAWNS UPON A WORLD BUSIED AS NEVER BEFORE



BY FOUNTAINE FOX

(Copyright)

Oh! Ginger!

THE PADDED CELL



—The Widow.  
"I tell you, those chorus girls have a hard time."  
"Yes, they have to bear a great deal."

**Her Way of Telling**  
The eyes of a little miss were attracted by the sparkle of the new at early morning.  
"Mamma," she exclaimed, "it's better'n I thought it was."  
"What do you mean?"  
"Look here; the grass is all covered with perspiration."—Pearson's Weekly.

A Military Euphemism



—The Widow.  
"I think I'm getting fatter, Cuthbert."  
"Well, sir, I'm afraid you have—ahem!—extended your waist lately."



War Chests



—The Widow.  
**Let Bygones Be Bygones**  
Mistress to applicant for cook's position—Why did you leave your last place?  
Applicant—You are very inquisitive, marm. I didn't ax yer what for yer last cook left you.—Pearson's Weekly.

The Young Lady Across the Way



The young lady across the way says war's certainly hell, just as General Pershing said.

Inner Illumination



Yes, they tried shutting off the lights in all of the big cafes at midnight.  
Did it fail?  
Yes—the guests were so lit up by that time that it didn't make much difference.

SCHOOL DAYS

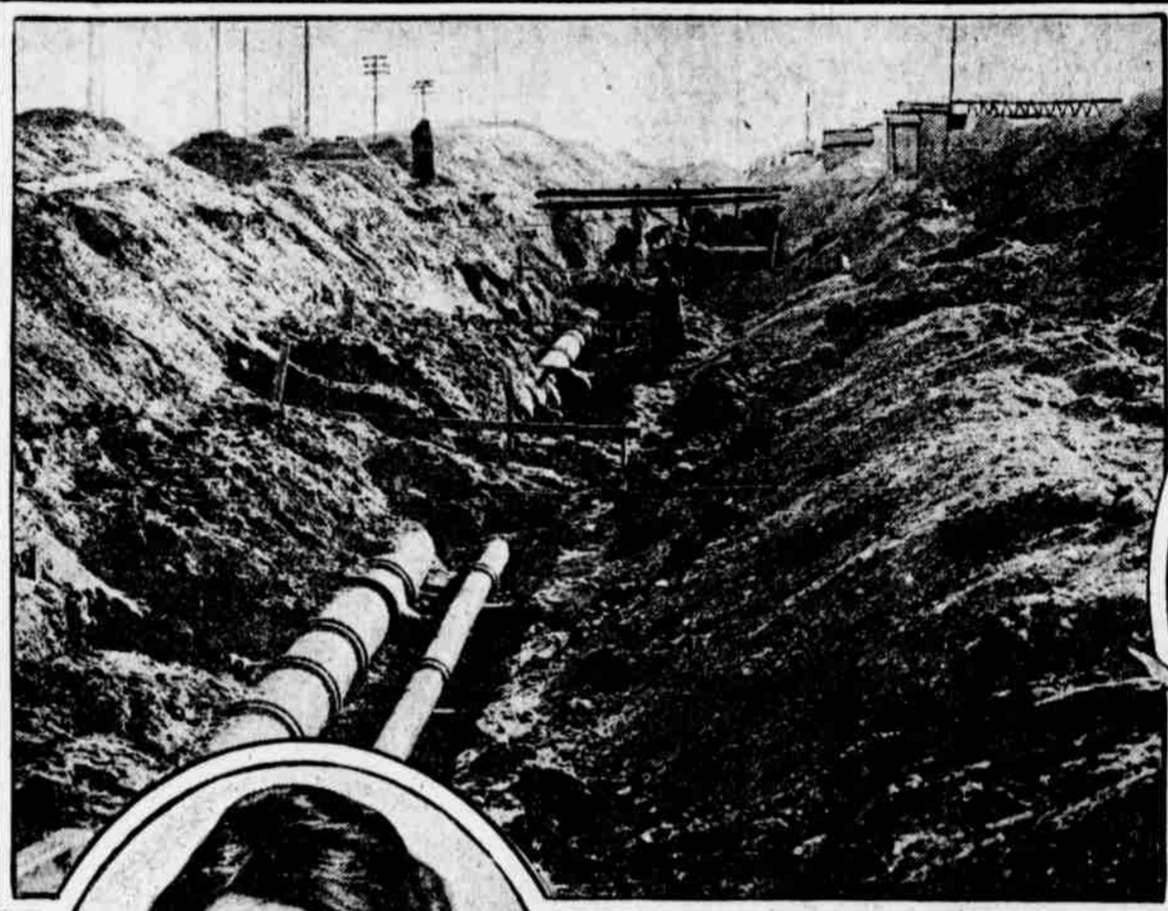
By DWIG



Now dearie, this is New Year's Day and I want you to make some good resolutions and KEEP them. I want you to think why being so impudent, eating cookies between meals, playing hooky from school, going to bed playing hooky from school, going to bed with a witch's face, reading fiction and novels, putting your teeth in my candy, and any thing else you should do.



AMERICAN SOLDIERS WHO SURVIVED THE BATTLE OF CAMBRAI, WHICH, WHEN SUDDENLY SURROUNDED BY THE GERMANS IN A COUNTER-OFFENSIVE, THEY DROPPED PICK AND SHOVEL TO COMBAT THE HUNS UNTIL BRITISH RE-ENFORCEMENTS ARRIVED. Underwood & Underwood



This Photograph Might Be Taken as the Excavation for a Canal, but It Represents Merely One Section of a Trench, Which Will Carry Water Mains and Sewer Pipes at Hog Island Shipyard.



The Office of Samuel McGowan, Chief of the Bureau of Supplies and Accounts in the Navy Department, Shown in the Picture, Is Regarded as an Example of the Nth Power of Efficiency.



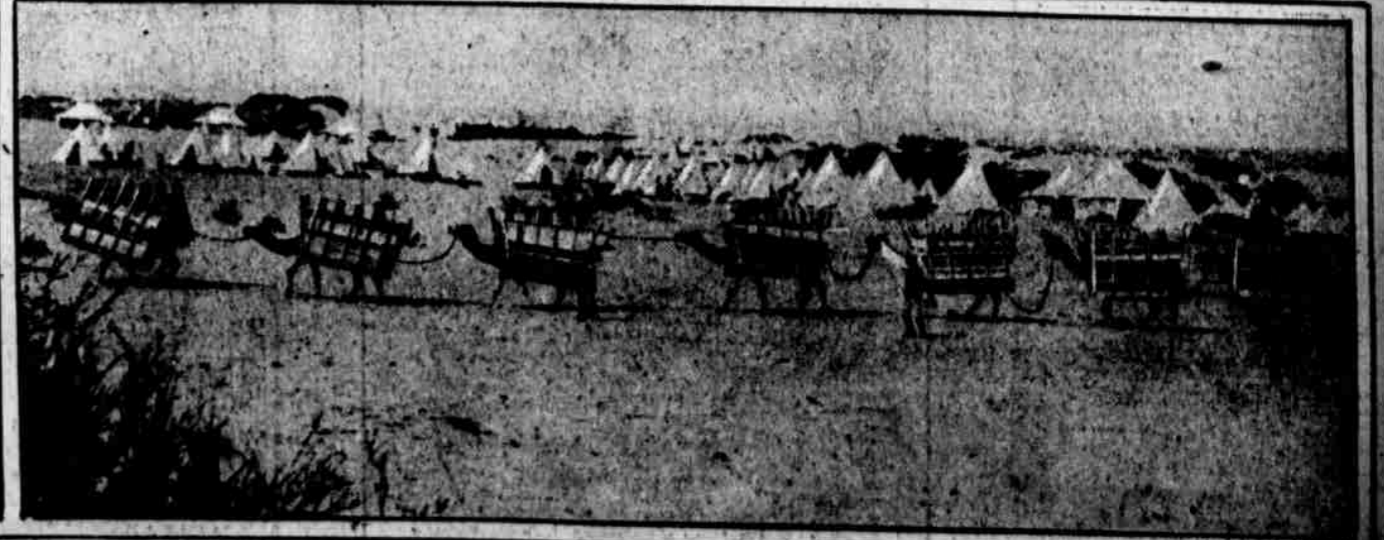
One of the Most Notable Exponents of a New China is Dr. Yamsie Kim, a Woman Physician, Who Just Now is Paying a Visit to Washington.



Clearing Away the Snow From Gustine Lake in Fairmount Park for the Crowd of Holiday Skaters, Who Will Enjoy the Splendid Skating There, as Well as on the Other Park Lakes and Wissahickon Creek.



Sergeant Joseph K. Roy, Leading the Police Dog Which is the mascot of Company K, 816th Infantry, at Camp Meade.



A British Camel Convoy Leaving One of General Allenby's Encampments on the Deserts of Palestine. These "Ships of the Desert" are Torpedoproof, Which is One Reason for the Series of Successes That Have Carried the British Forces Ten Miles Beyond the Holy City of Jerusalem.