

MONDAY  
December 3, 1917

# Evening Public Ledger

PICTORIAL  
SECTION

SEASON'S FIRST SNOWFALL THROWS SOFTENING MANTLE OVER CAMP MEADE—OTHER NEWS PICTURES



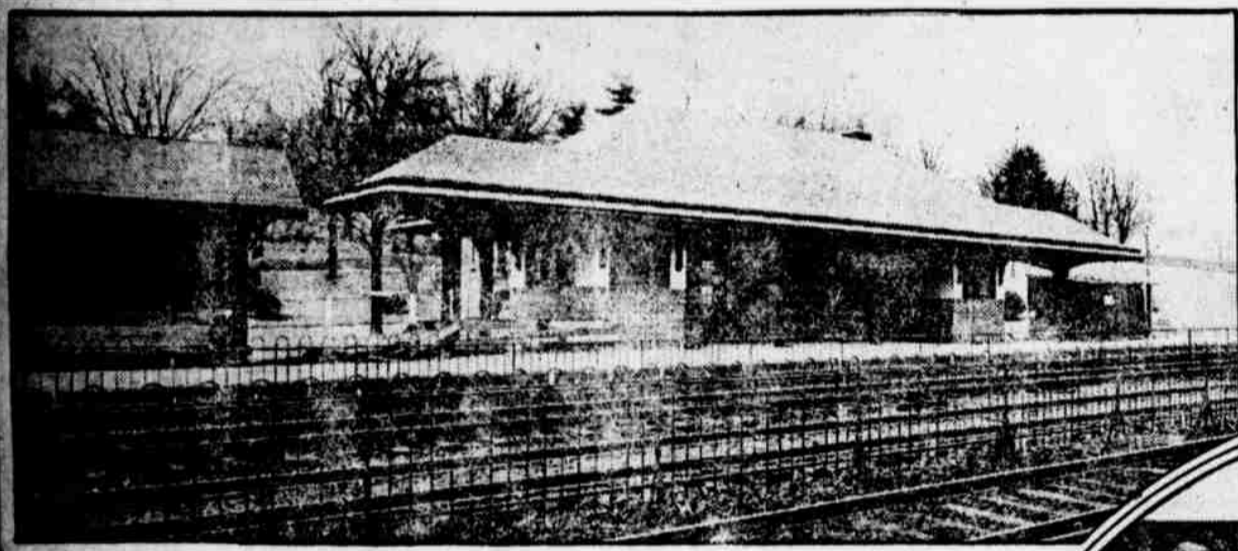
CAPTAIN SHERMAN M. CRAIGER, OF THE QUARTERMASTER'S RESERVE CORPS, ATTACHED TO THE UNIVERSITY BASE HOSPITAL, MOBILIZING HERE



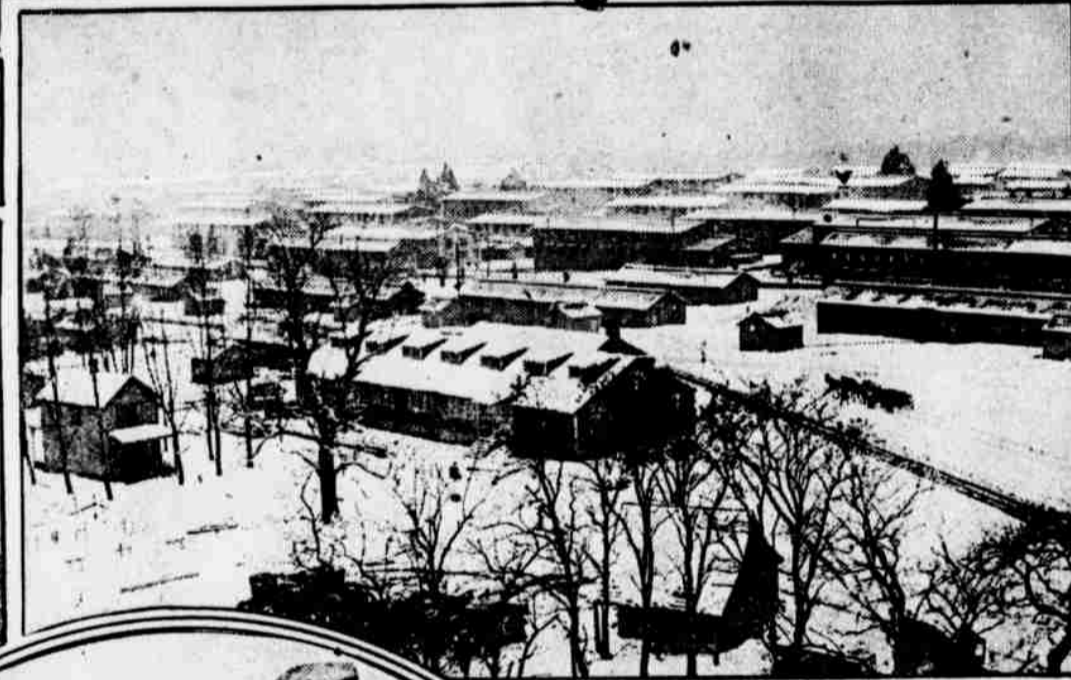
THE CHILL DECEMBER EVENINGS PASS QUICKLY IN THE BARRACKS AT CAMP MEADE, WITH LETTERS FROM HOME AND NEWSPAPERS TO READ, AND MUSIC BY SOLDIER ARTISTS



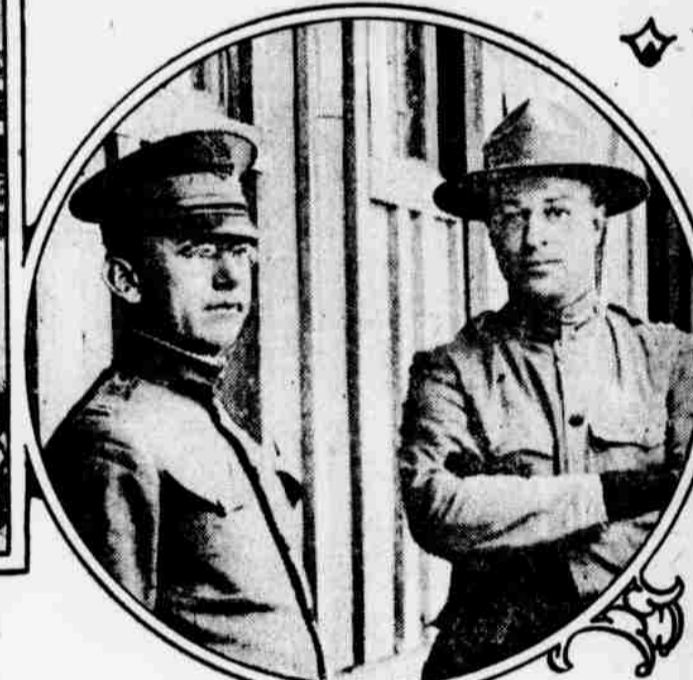
MEMBERS OF THE NEW NATIONAL ARMY QUARTERED AT CAMP MEADE WAGE THEIR FIRST BATTLE WITH SNOWBALLS FOR AMMUNITION AND THEIR OWN COMRADES AS TARGETS



MERION'S ARTISTIC NEW RAILROAD STATION ANOTHER TRIBUTE TO THE FASHIONABLE SUBURB'S LIVE-WIRE CIVIC ASSOCIATION



THE BARRACKS AT CAMP MEADE AS THEY APPEARED UNDER THEIR FIRST MANTLE OF SNOW, WHICH DESCENDED THANKSGIVING EVE



CAPTAIN J. M. CRAVEN (LEFT) INSTRUCTS BAKERS AND COOKS AT CAMP MEADE; CAPTAIN H. M. RUPP DIRECTS WASTE DISPOSAL

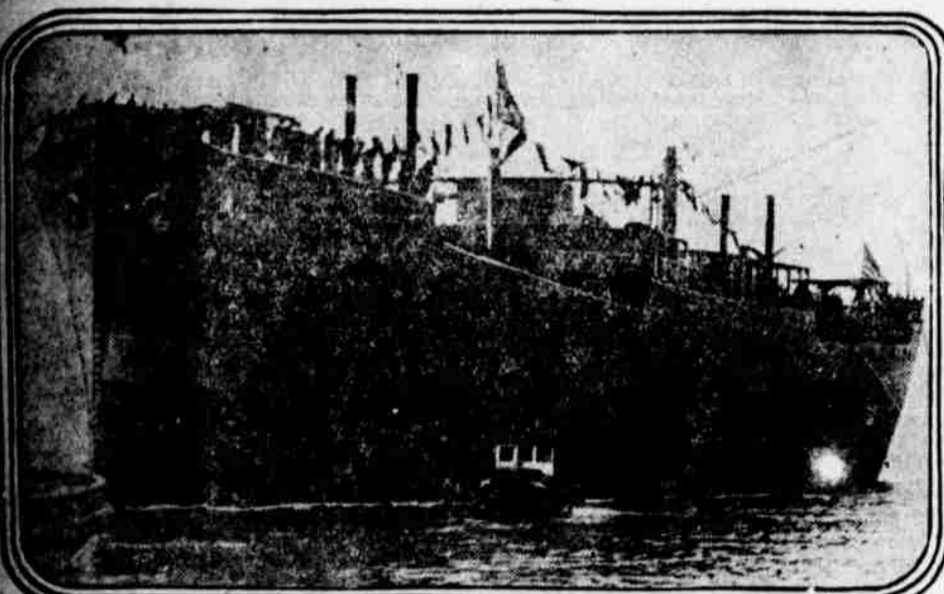
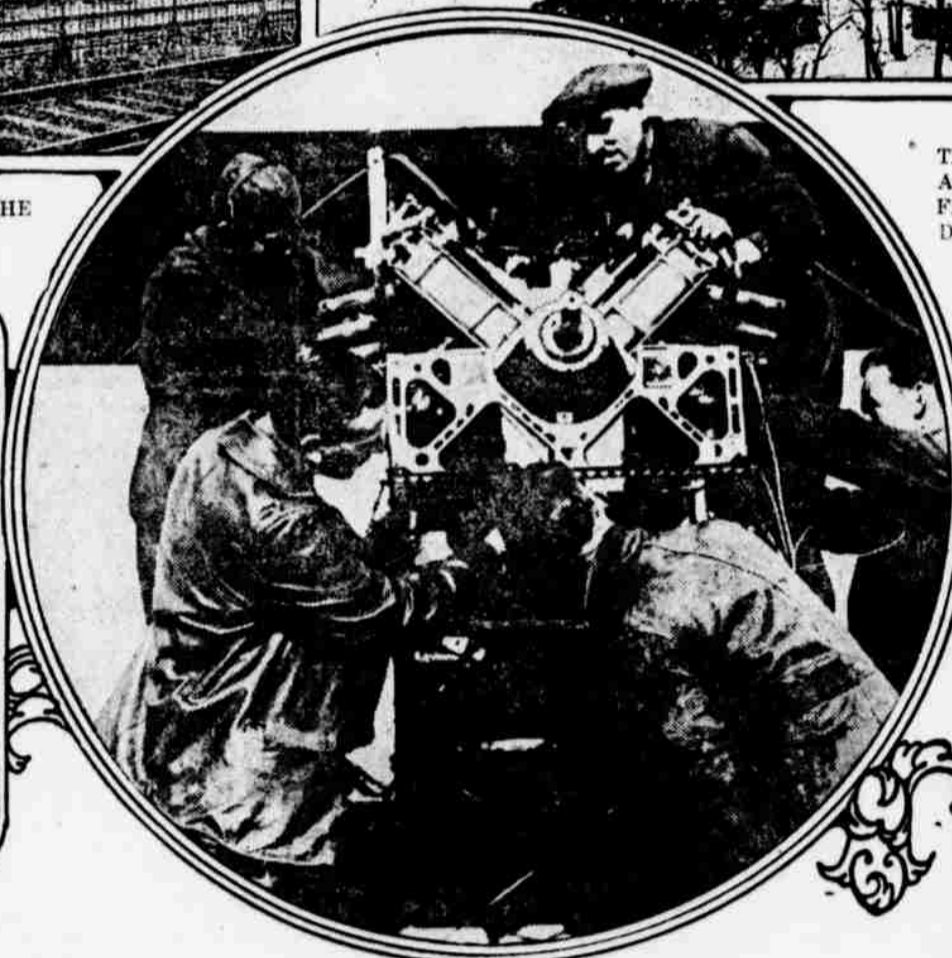


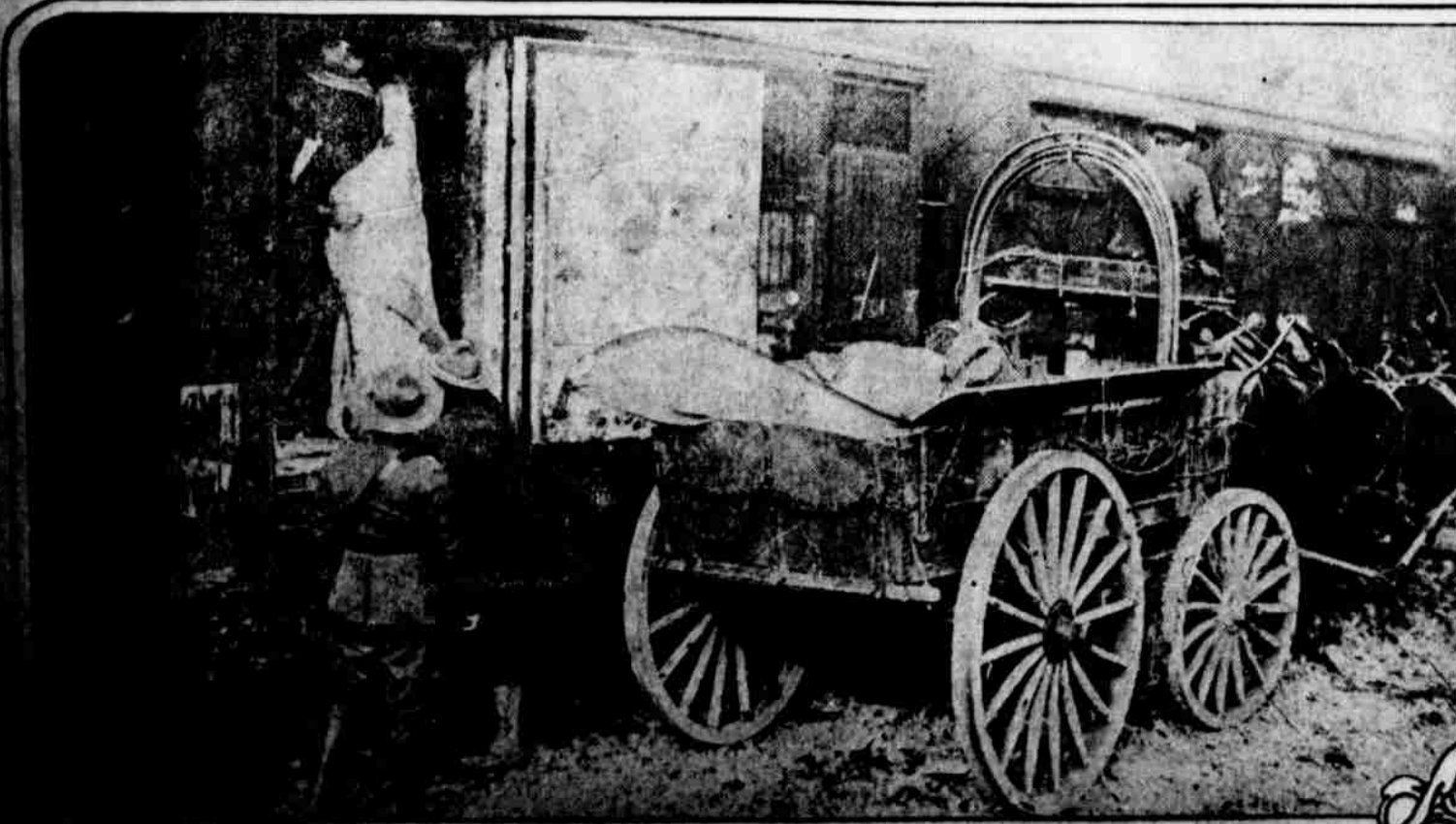
Photo from Western Newspaper Union.  
FIRST VESSEL COMPLETED BY THE EMERGENCY FLEET CORPORATION IS THIS 8800-TON STEEL MERCHANTMAN LAUNCHED AT SEATTLE



Copyright, Western Newspaper Union.  
AMERICA'S FUTURE WAR EAGLES INSPECTING AN AIRPLANE'S MOTOR AT THE PRINCETON AVIATION FIELD



CAMOUFLAGED MERCHANT SHIP MAKES ITS APPEARANCE IN PHILADELPHIA AFTER A SAFE VOYAGE ACROSS THE U-BOAT WAR ZONE



Copyright, Committee on Public Information.  
THE HAMMER AND THE TROWEL BEING LOADED INTO A SUPPLY TRAIN IN FRANCE



Copyright, Committee on Public Information.  
ISSUING RATIONS AT ONE OF THE AMERICAN SUPPLY STATIONS IN FRANCE