



ILLUSTRATED Evening Ledger

PICTORIAL SECTION

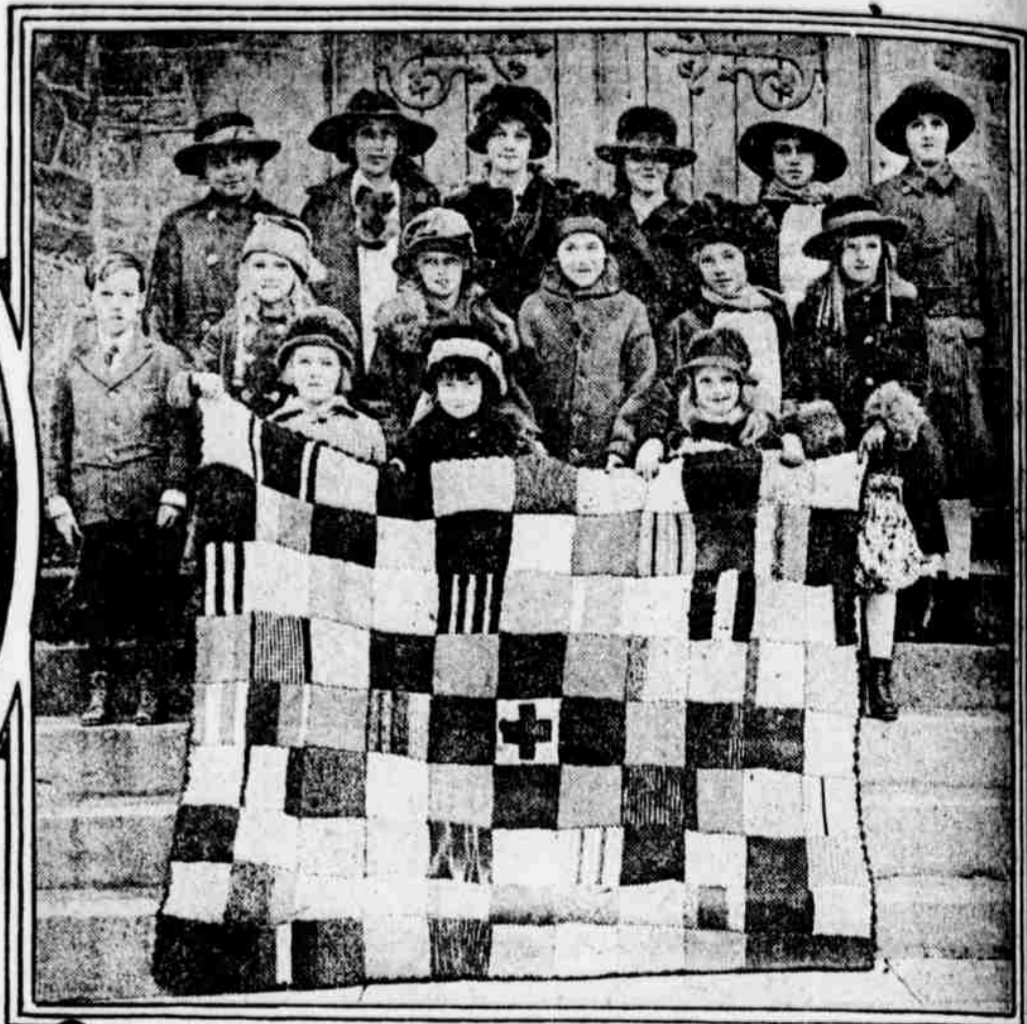
PHILADELPHIA NEWS PREDOMINATES IN A PHOTOGRAPHIC RESUME OF THE DAY'S HAPPENINGS



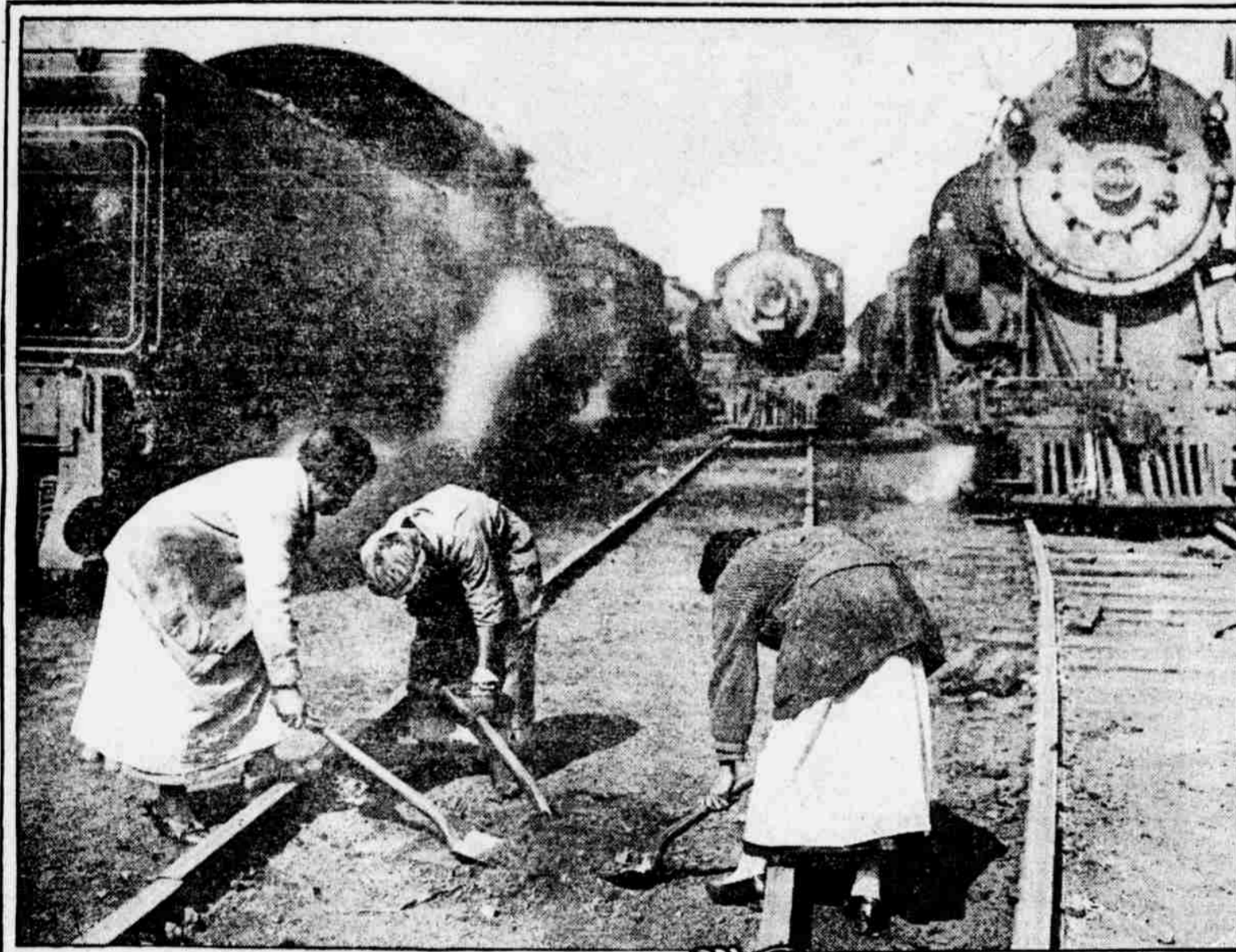
WHERE MISSING SWEETHEARTS ARE FOUND AT CAMP MEADE
The information bureau at the nearby cantonment does a land office business Sundays, giving Philadelphia visitors the whereabouts of friends and loved ones.



COLLECTS \$50 FOR ARMY AMBULANCE
The tireless efforts of Miss Emily G. Molten were largely responsible for the success of the campaign directed by members of the "Old First" Regiment.



JUVENILE RED CROSS AIDS FASHION A QUILT
They are members of the Sunday school classes of St. Stephen's Methodist Episcopal Church, 5209 Germantown avenue, where they made their contribution for foreign relief.



WOMEN WORKERS ON THE PITTSBURGH DIVISION OF THE PENNSYLVANIA RAILROAD PURSUE THEIR DANGEROUS OCCUPATION WITH THE SAME STEADY NERVES AS THE MEN THEY REPLACED



FUTURE ARMY ENGINEERS FAMILIARIZE THEMSELVES WITH GANVAS PONTOONS
In preparation for the day when they will be called on to bridge the streams of northern France, they are trained in this sort of navigation.



KNITTING USEFUL THINGS FOR SAMJEES NOT LIMITED TO GROWN-UPS
The little inmates of the Church Home for Children, Fifty-eighth street and Baltimore avenue, are working daily upon the articles so badly needed overseas.



IN THE FIRST-LINE TRENCHES NEAR ALLENTOWN
About 2000 men in training for ambulance work have left their camp on the Fair Grounds at the up-State city and have "dug in" at a bivouac some four miles away.



RED CROSS AMBULANCE AND THE COLLECTORS WHO MADE ITS PURCHASE POSSIBLE
The auto and its equipment are meant for the "Old First" Regiment, now the 109th Regiment, stationed at Camp Hancock. In the picture are Mrs. T. F. Meehan, Miss M. R. Pyle, Mrs. Charles Sage, Lieutenant H. R. Sage, Miss Emily G. Molten, Miss Emily Ashland, Miss Stella Byrson, Miss Alice Kemp, Howard Nelson, Miss Beulah Brooke, Miss M. Burns, Miss Myrtle Hedding, Corporal J. C. Miller, Mrs. K. W. Magill, Miss Rosalie Magill, Mrs. C. E. Hamel and Miss Etta Gags.