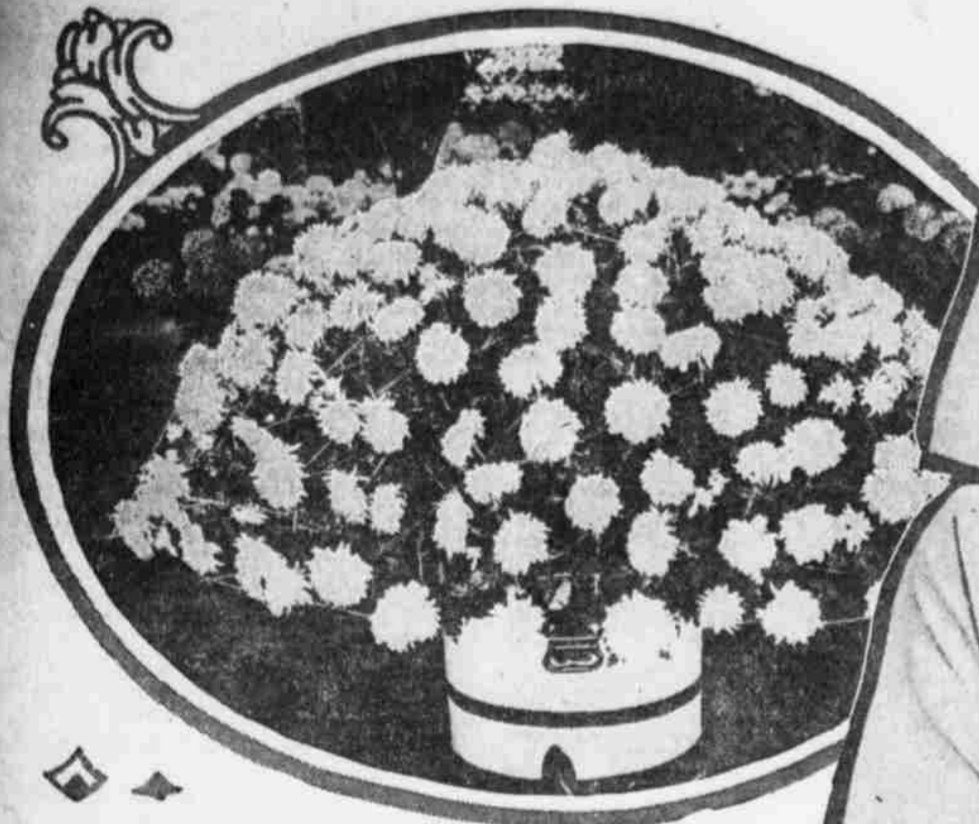




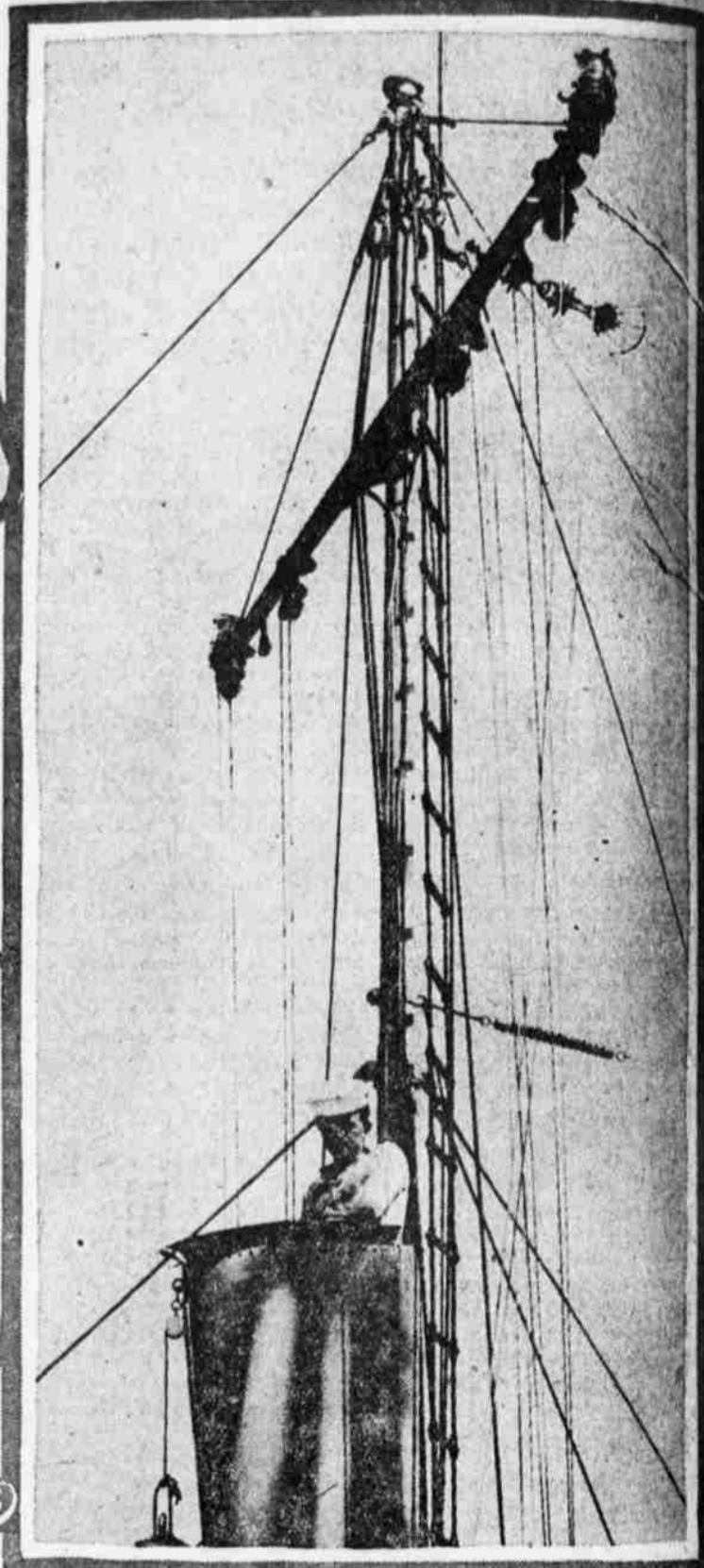
PHOTOGRAPHS OF PERSONS AND PLACES LOOMING LARGE IN THE HAPPENINGS OF THE DAY



PRIZE-WINNING PLANT EXHIBITED BY C. B. NEWBOLD AT THE EIGHTY-NINTH ANNUAL CHRYSANTHEMUM SHOW IN THE FIRST REGIMENT ARMORY



MISS ALICE KEMP (LEFT) AND MRS. LILLIAN HOLT, RED CROSS WORKERS, AT THE CHRYSANTHEMUM SHOW, HOLDING ONE OF THE EXHIBITS



Copyright, Committee on Public Information  
ON THE LOOKOUT FOR SUBMARINES FROM THE "CROW'S NEST" OF ONE OF OUR DESTROYERS IN FOREIGN WATERS



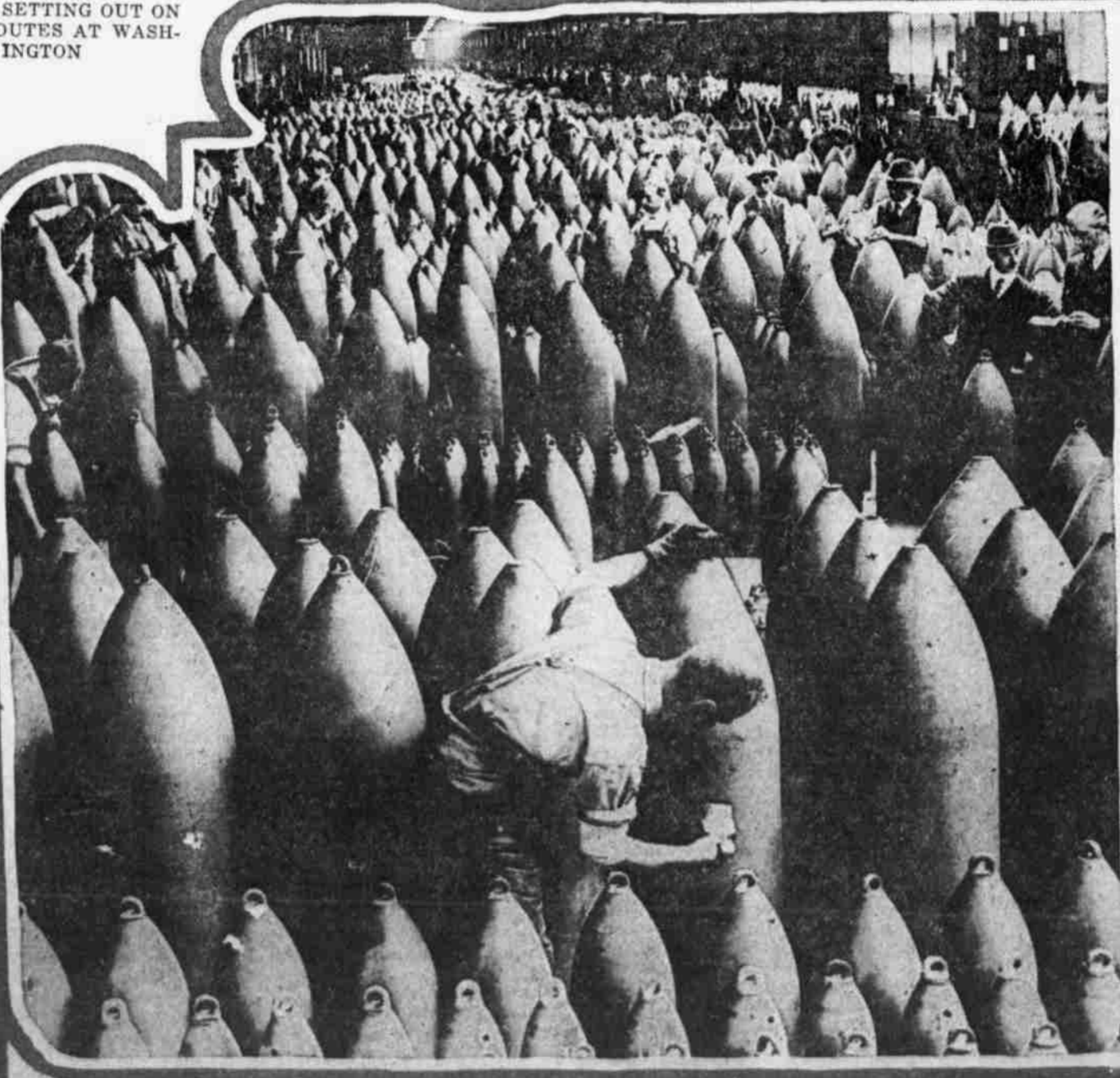
Harris & Ewing Photo  
NATION'S FIRST "POST-WOMEN" SETTING OUT ON THEIR ROUTES AT WASHINGTON



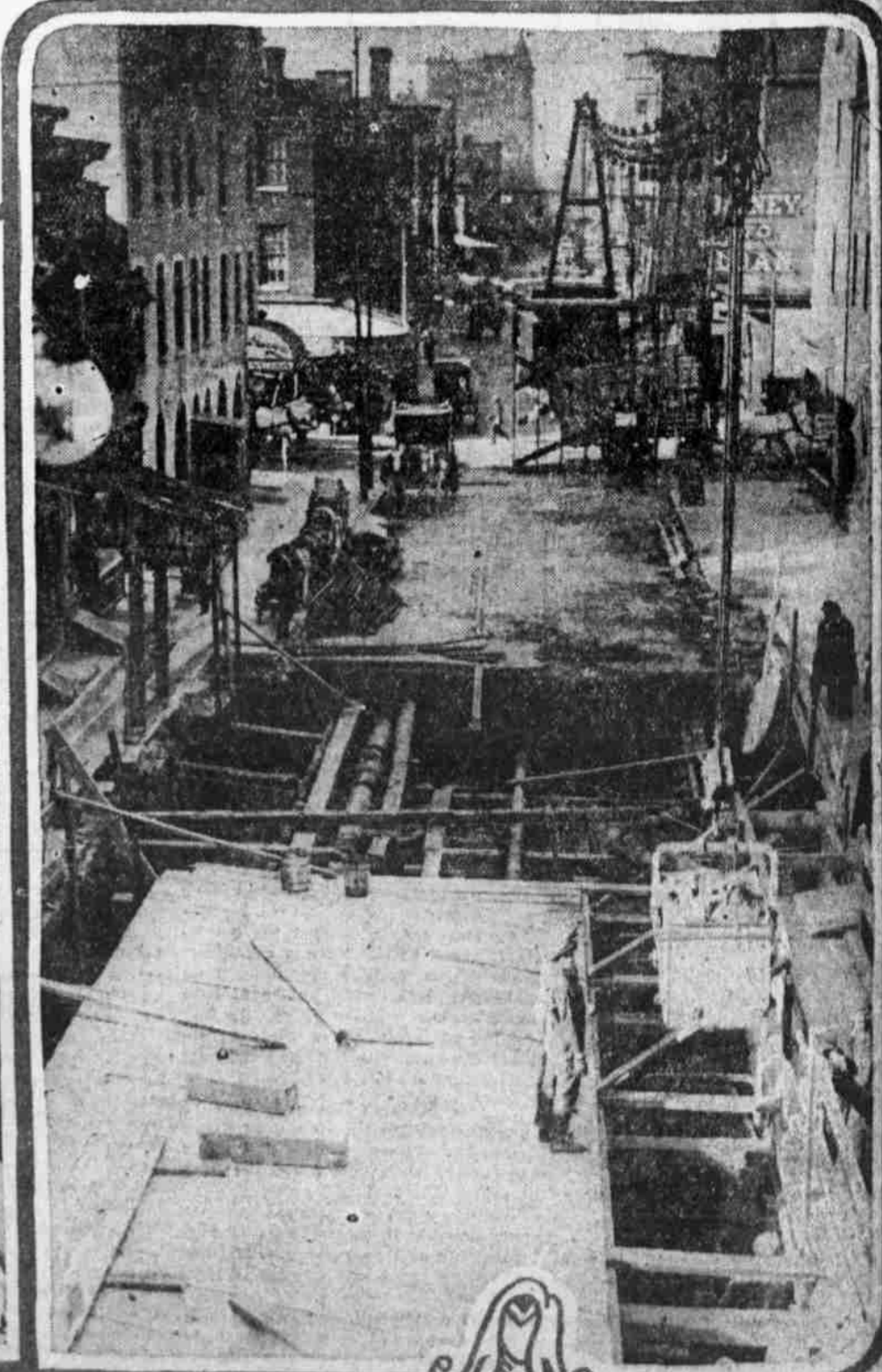
MISS LUCY BRANHAM, SUFFRAGE PICKET, WHO SERVED A JAIL SENTENCE, PAYS VISIT TO HER PHILADELPHIA SISTERS



"MIKE" DORIZAS IN NEW TOGS  
Penn's former strong man is now a member of the University Ambulance Unit.



Copyright, Underwood & Underwood  
ENGLAND'S ANSWER TO THE CHALLENGE OF GERMAN SUPERIORITY  
Here are thousands upon thousands of shells awaiting the painter's brush in one of the great munition plants supplying General Haig's forces in France.



SUBWAY DELIVERY LOOP IN COURSE OF CONSTRUCTION  
The excavation at Ninth and Locust streets looks sufficiently businesslike for even the most enthusiastic transit boosters.