



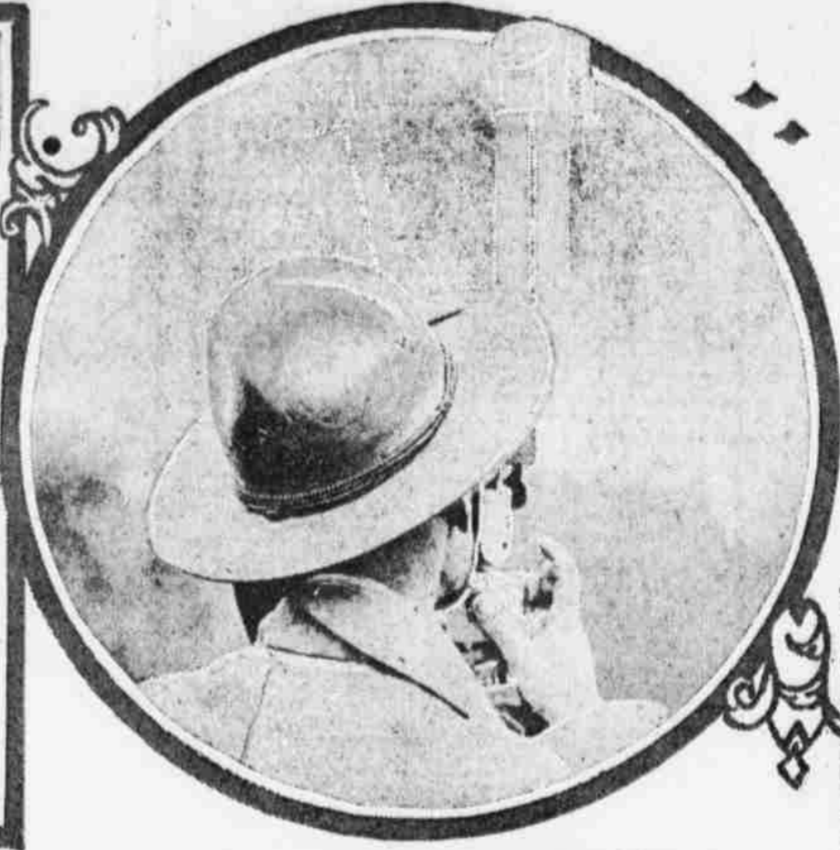
ILLUSTRATED Evening Ledger

PICTORIAL SECTION

OFFICIAL PHOTOGRAPHS OF AMERICAN ARTILLERYMEN NOW IN ACTION ON THE WEST FRONT



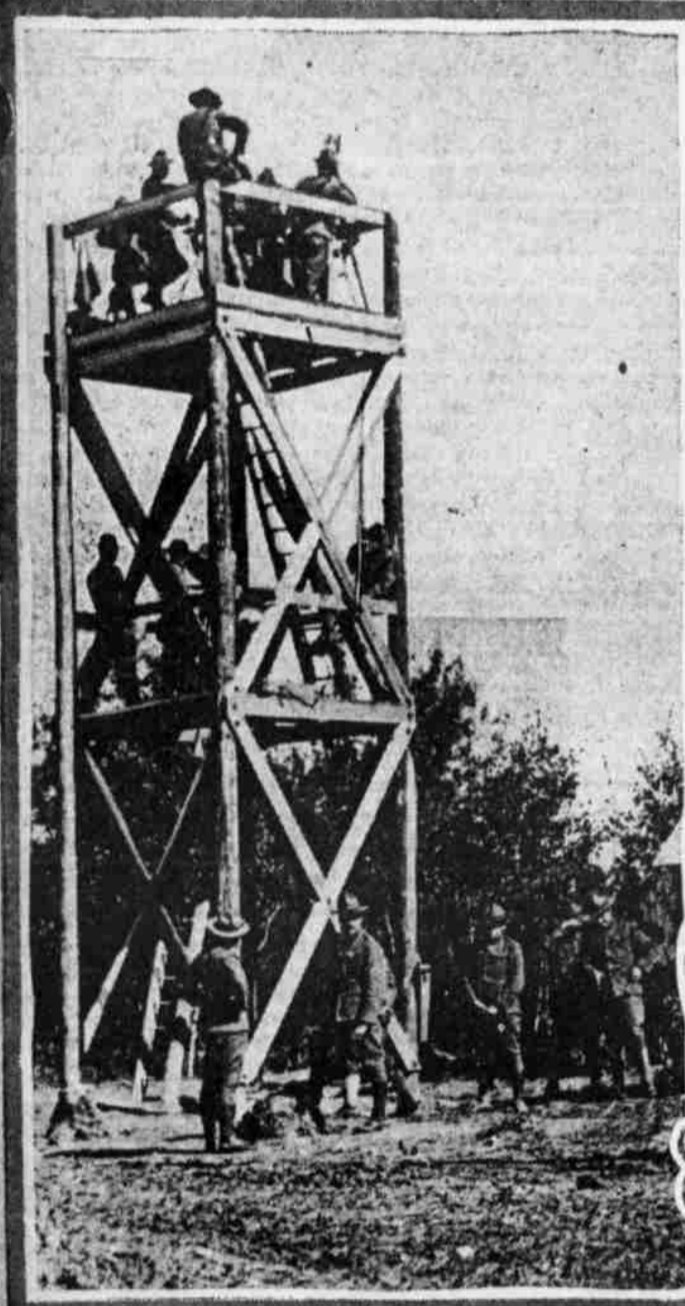
Copyright, Committee on Public Information. THESE LADS ARE NOW HURLING SHELLS AT THE GERMANS. An American gun in action "somewhere in France." Note the empty shell in the act of being ejected.



Copyright, Committee on Public Information. GETTING A LINE ON THE BOCHES. American artillery officer using the newest type of "finder" to ascertain the range.



Copyright, Committee on Public Information. WORD FROM HEADQUARTERS TO RESUME FIRING. A Sammee operator using a field telephone for the transmission of orders.



Copyright, Committee on Public Information. AMERICAN OFFICERS WATCHING THE EFFECT OF ARTILLERY FIRE FROM AN OBSERVATION TOWER



TALENTED CAST OF THE GEORGE WASHINGTON JUNIOR MINSTRELS, OF KENSINGTON. They frequently appear in benefit performances for charity. Left to right, Evelyn Phillips, Horace Devlin, Helen Cossetta, Alma Shaughnessy, Palma Brees, Mildred Kay, Lillian Taylor, Bernice Dove, Catharine Blenk, Teresa Hey, Katherine O'Conner.



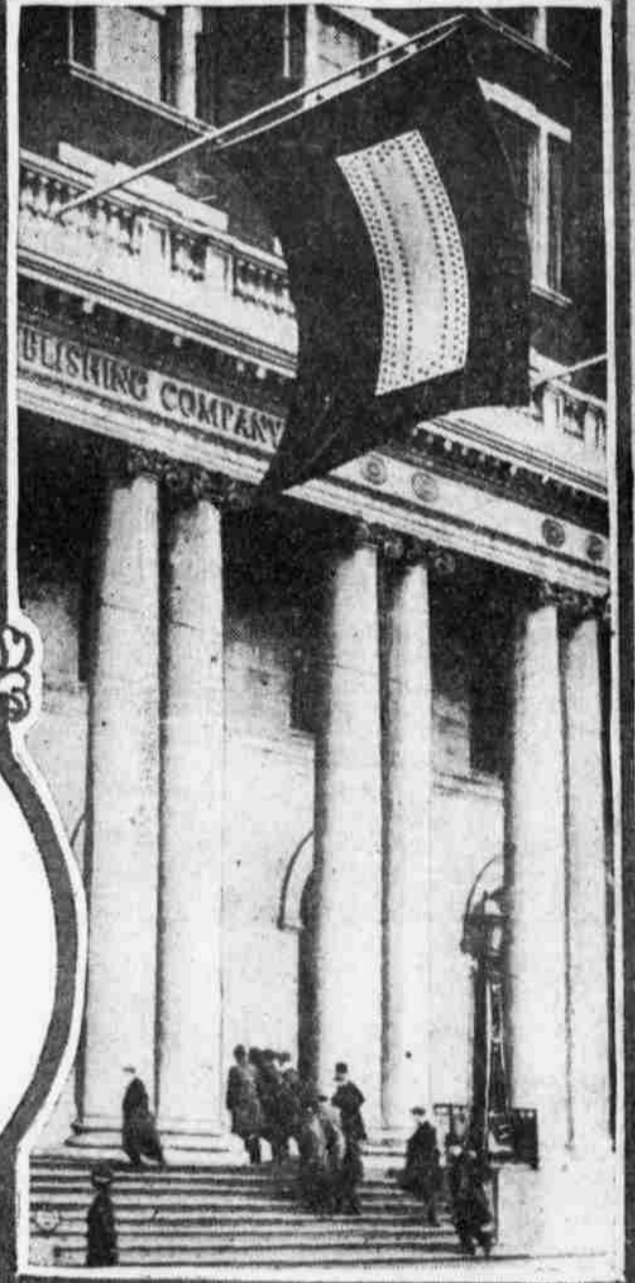
CHARLES M. SCHWAB, 2D, NEPHEW OF THE BETHLEHEM STEEL MAGNATE, WHO HAS ENLISTED IN THE NAVAL RESERVE



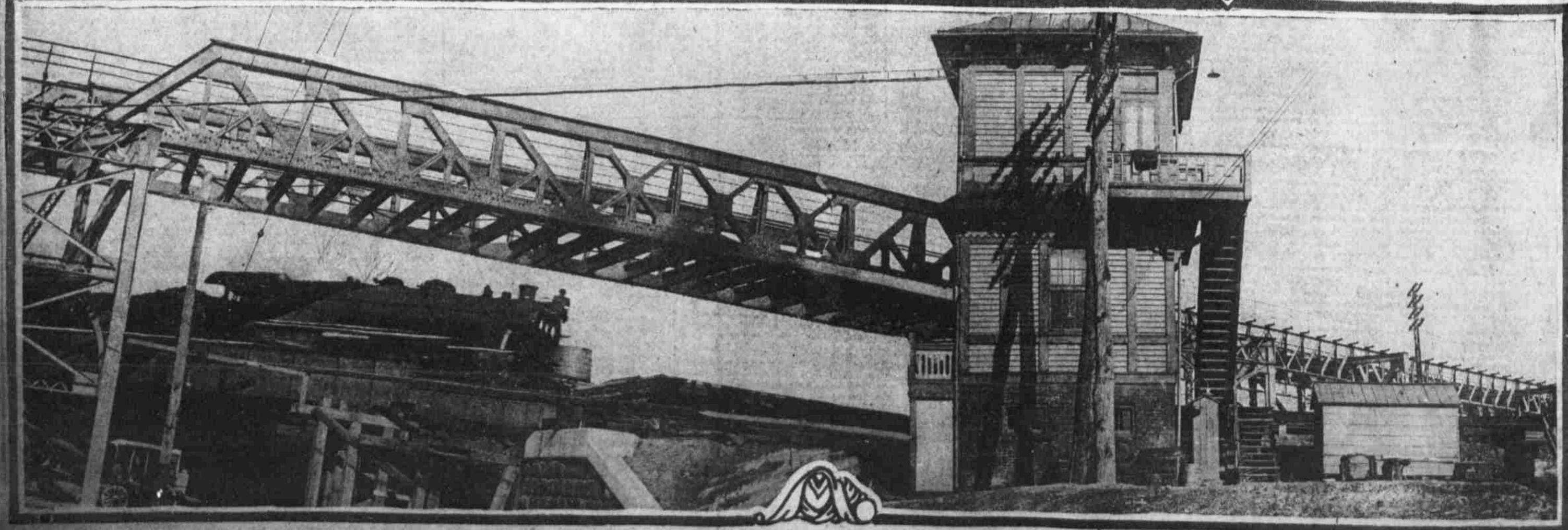
CAPTAIN S. A. W. PATTERSON, IN CHARGE OF MARINE CORPS RECRUITING IN THE PHILADELPHIA DISTRICT



RALPH A. STILL, MEMBER OF THE EVENING LEDGER STAFF, CALLED TO THE COLORS AND NOW AT CAMP MEADE



HEADQUARTERS OF THE EVENING LEDGER COMPANY, BEARING 178 STARS OF HONOR



THE NEW FRANKFORD ELEVATED WHERE IT CROSSES THE TRACKS OF THE NEW YORK DIVISION OF THE PENNSYLVANIA RAILROAD NEAR KENSINGTON AND ERIE AVENUES