



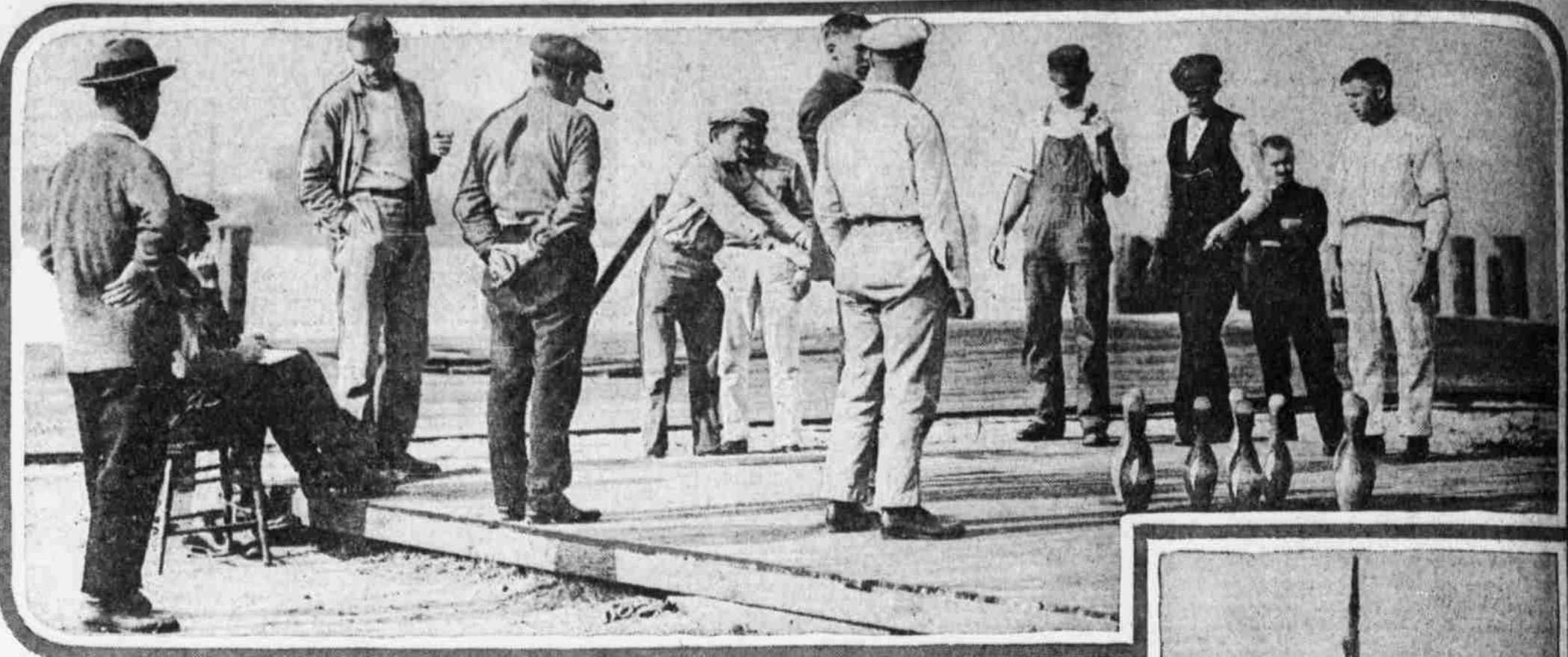
# ILLUSTRATED Evening Ledger

PICTORIAL  
SECTION

PICTORIAL PORTRAYAL OF THE DAY'S NEWS HAPPENINGS IN PHILADELPHIA AND ELSEWHERE



**SPREADS CHEER AMONG THE SAMMEES**  
As head of the Personal Service Bureau of the Home Defense League, Mrs. M. L. Woodruff keeps track of the whereabouts of enlisted men and assists relatives by forwarding letters and gifts.



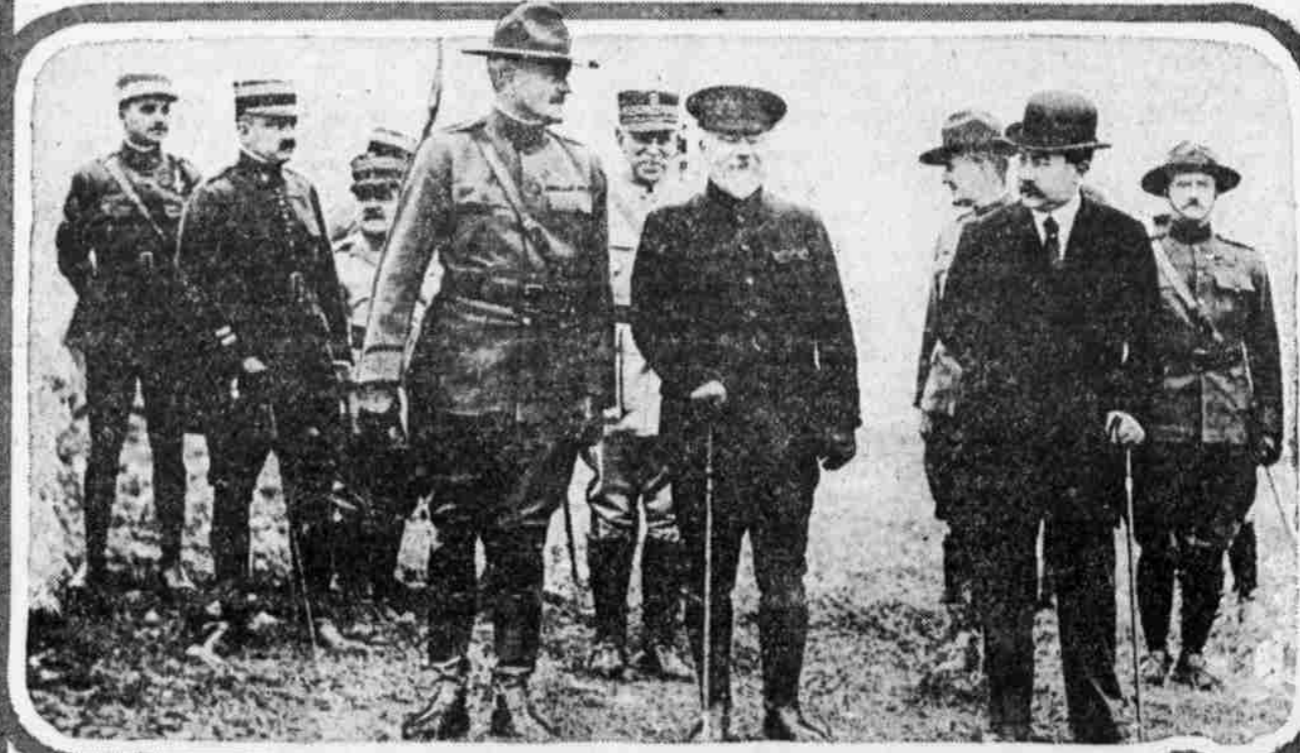
**INTERNED TEUTONS FIND CONFINEMENT HERE SLIGHT HARDSHIP**  
Assembled at the Gloucester immigration station are scores of Germans and Austrians taken from merchant vessels seized by Uncle Sam. The prisoners in the picture are shown at one of their many games.



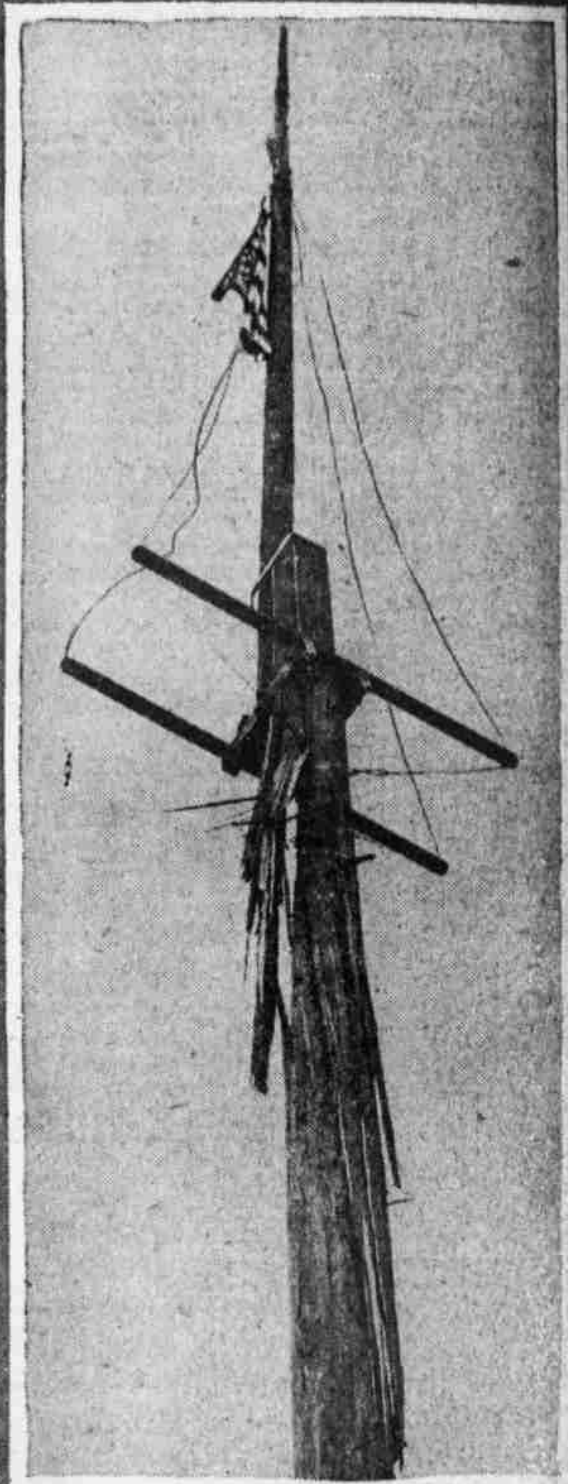
**IN THE VANGUARD OF THE SUFFRAGE HOSTS**  
Dr. Anna Howard Shaw, in academic garb, and Mrs. Carrie Chapman Catt, in white military cloak, as they appeared marching in New York's great suffrage pageant.



**PATHS OF LEARNING OPENED TO LITTLE UNFORTUNATES**  
A daily scene at the Horace Binney Public School, Spruce street above Fifth, when the Board of Education's bus arrives with crippled pupils.



**PERSHING AND DISTINGUISHED FRENCHMEN REVIEWING SAMMEES**  
Shortly before they took their places in the first-line trenches the American troops appeared on parade. At their commander's left are President Poincare and Paul Painleve.



**FLAGPOLE AT FIFTY - SEVENTH STREET AND BALTIMORE AVENUE SHATTERED BY LIGHTNING IN SATURDAY'S STORM, BUT OLD GLORY REMAINS INTACT**



**AMERICAN TROOPS, WEARING FULL TRENCH EQUIPMENT, MARCH IN REVIEW ON THEIR TRAINING FIELD IN FRANCE**



**GENERAL ALVARO OBREGON, MEXICO'S FOREMOST MILITARY LEADER, VISITS WASHINGTON DURING TOUR OF UNITED STATES**

