

PLAYERS WHO WILL APPEAR IN NEXT WEEK'S OFFERINGS AT PHILADELPHIA THEATRES



ALICE EIS AND BERT FRENCH IN A FANTASY DANCE AT KEITH'S



ONE OF THE MANY "SURPRISE" SCENES IN "CHEATING CHEATERS," WHICH OPENS AT THE GARRICK MONDAY



MAE MARSH AND HER FAVORITE STEED IN THE GOLDWYN PHOTOPLAY, "POLLY OF THE CIRCUS," AT THE WILLIAM PENN



OLGA NEWTON AS NAOMI IN "THE WANDERER," AT THE METROPOLITAN OPERA HOUSE



MAUDE FULTON, AUTHOR AND STAR OF "THE BRAT," AT THE LYRIC



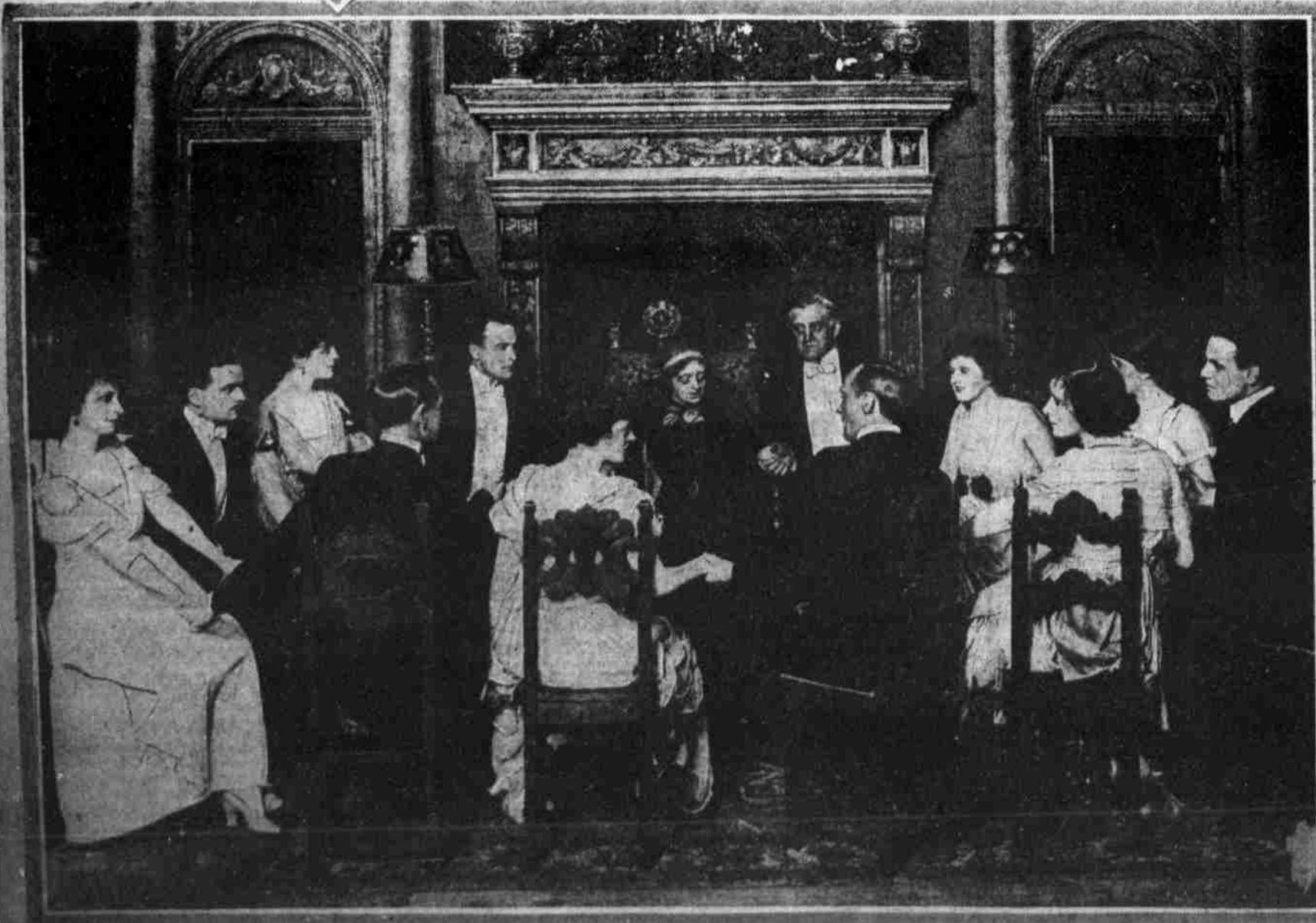
MAUDE ADAMS RETURNS TO THE BROAD IN J. M. BARRIE'S "A KISS FOR CINDERELLA" MONDAY. THE SCENE IS IN THE PENNY SHOP



ALMA BAUER, IN BURLESQUE, AT THE CASINO



HENRY HORTON IN "SHORE ACRES," AT THE WALNUT



THE HARROWING "SEANCE" SCENE IN "THE 13TH CHAIR," WHICH CLOSSES A LONG RUN AT THE ADELPHI NEXT WEEK



MISS BOONE, AT THE GLOBE



ANITA SEWART WILL BE AT THE KEYSTONE