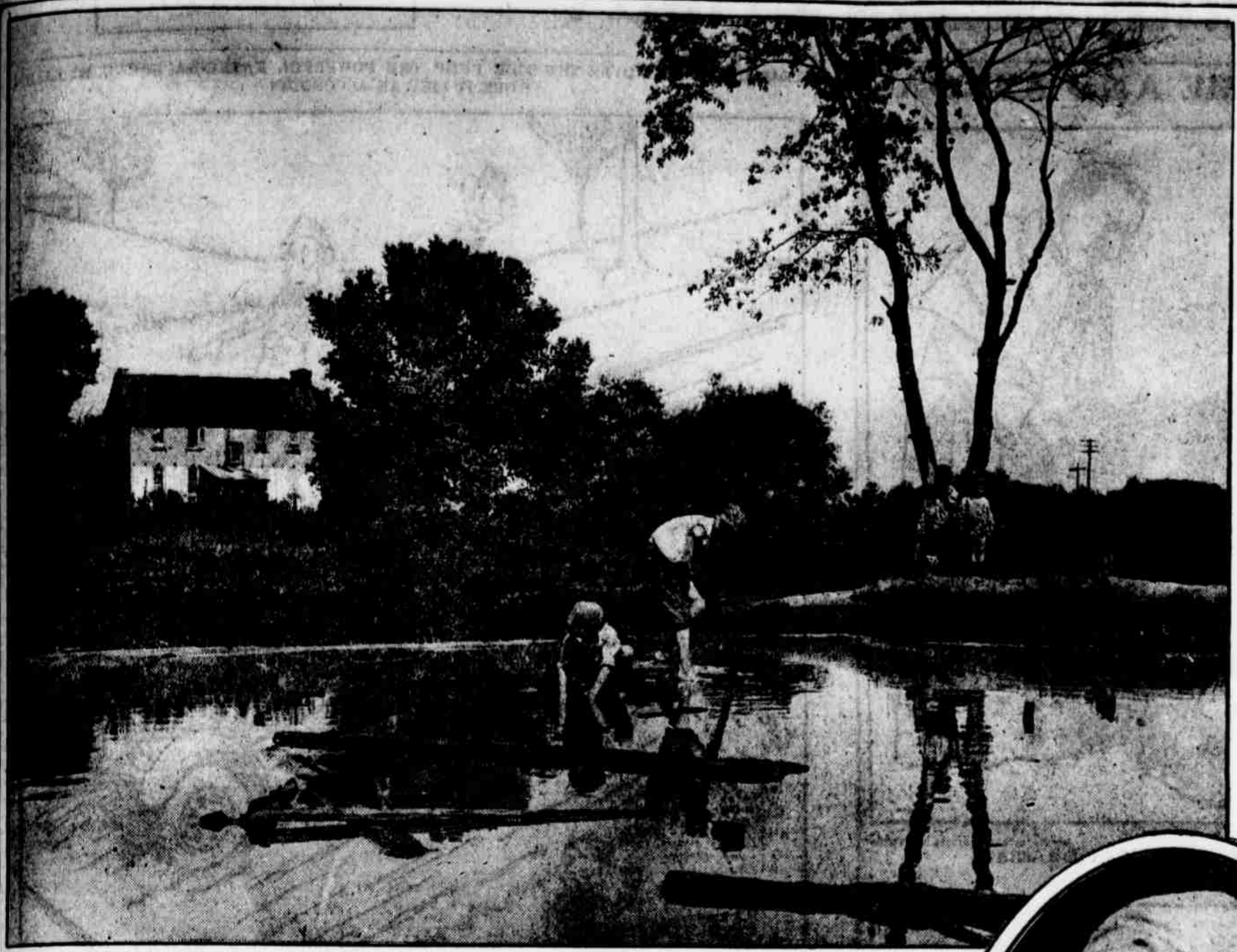


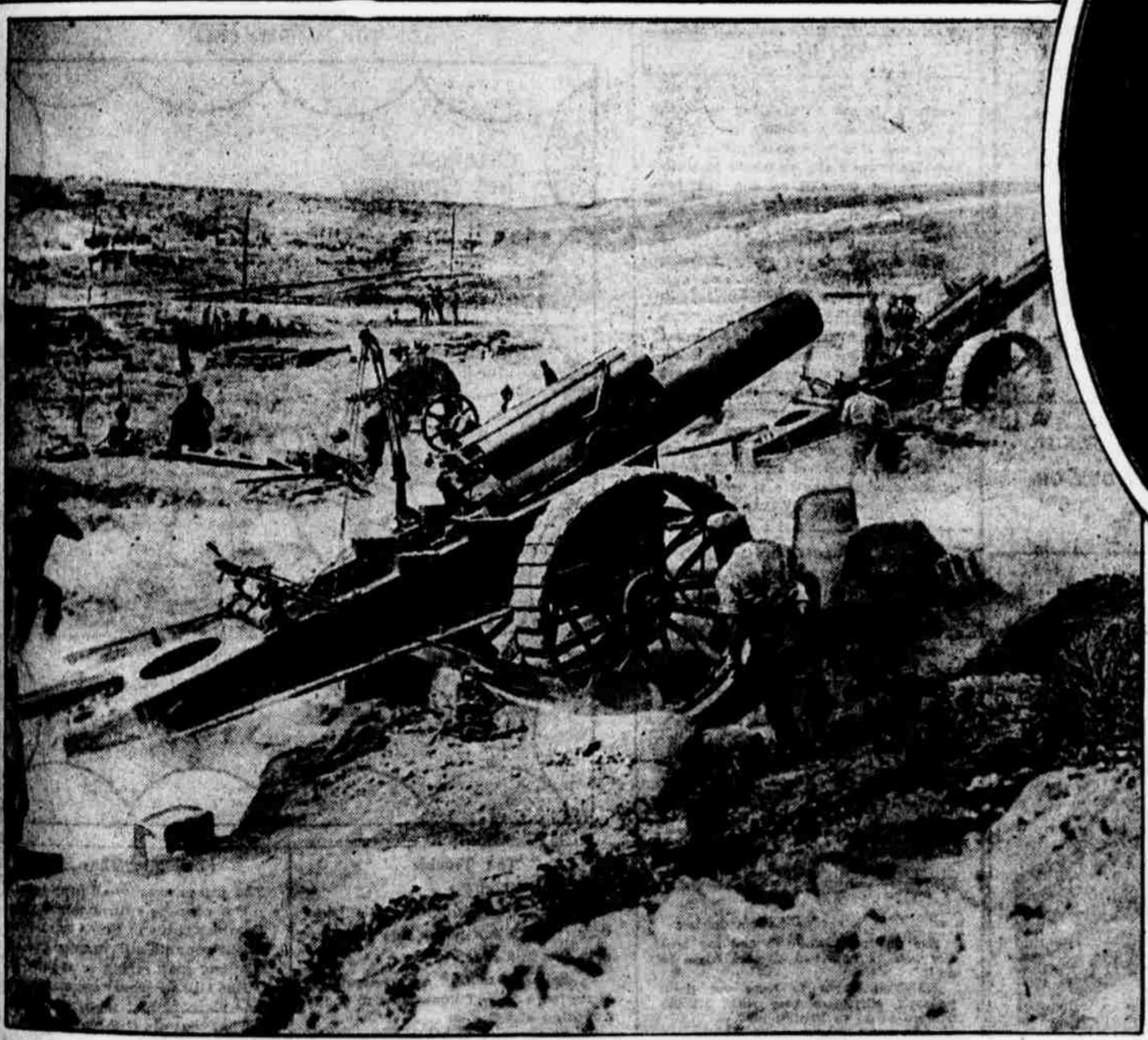
RUSSIAN SEAPORT ABANDONED TO GERMANS—OTHER PICTURES NEWSY AND UP TO DATE



**A PLAYGROUND FATAL TO CHILDREN OF NORTHEASTERN PHILADELPHIA**  
"The brickyard pond," which lies at Harrowgate lane and L street, above Erie avenue, whose placid waters have enticed twelve young residents of the neighborhood to death beneath their treacherous surface.



Photo from International Film Service  
**MODERN WEAPONS OF WAR INVADE PALESTINE'S SOIL**  
British official photograph showing a tank plowing its way among the palm trees of the Holy Land as the Tommies pursue their advance toward Jerusalem.



British Official Photograph from International Film Service  
**BATTERY OF GIGANTIC HOWITZERS IN ACTION ALONG THE FLANDERS FRONT**  
These great guns hurl the immense projectiles that are slowly but steadily battering down the barriers that oppose the advance of Marshal Haig's forces in Belgium.



**A HIGH-DIVING EXPERT**  
Miss Josephine Bartlett, of the National Women's Life-Saving League, New York, lost her first diving contest when Miss Eileen Allen defeated her in the national championships after five years of undisputed leadership.



Photo from International Film Service  
**"THE ENTENTE CORDIALE"**  
A British official photograph showing King George, Premier Lloyd George and the commander of the American troops in England holding conference in front of Buckingham Palace, where the King reviewed the Sammees August 15.



**RIGA, THE BALTIC SEAPORT, WHICH THE RUSSIAN DEFENDERS HAVE JUST YIELDED TO THE INVADING ARMIES OF THE GERMAN EMPIRE**  
This remarkable photograph, which was brought to this country by Aleksander Pawlowski, 2338 Orthodox street, shows in panoramic form the waterfront of the recently surrendered city, whose capture is of strategic importance, in that it is situated on a railroad line connecting with Petrograd, 820 miles distant.