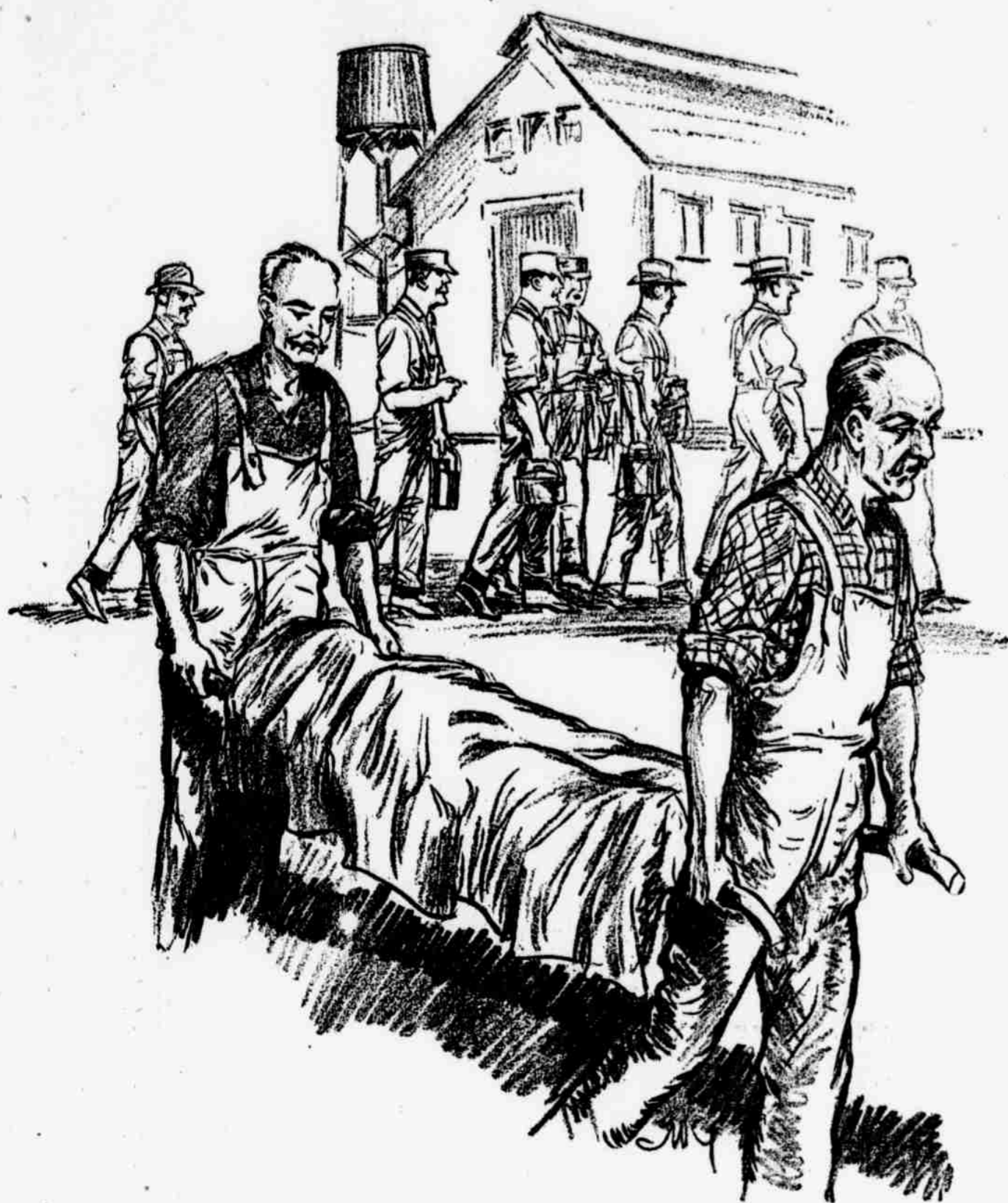


One Man in Every Seven Is Killed or Injured Every Year



In Pennsylvania alone 3413 wage earners were killed and 312,637 were injured in the first fifteen months following the enactment of the Workmen's Compensation law.

Three-fourths of these accidents were the result of carelessness and could have been prevented by the observance of simple safety-first rules.

There is nothing difficult or complicated about the gospel of safety first. It simply means exercising plain common sense, avoiding unnecessary risks.

If your work is such that you should wear goggles, wear them at ALL times. Every time you neglect to do so you run the risk of losing your sight.

Never attempt to clean a piece of machinery while it is in motion. You may lose a finger or hand as a result of trying to save a minute or two.

Never get on or off a moving elevator. Many a man has been fatally crushed by being in too great a hurry.

If you are learning a trade, don't pretend that you understand the workings of machinery. Let somebody show you.

Don't wear loose clothing when working around moving machinery.

Don't skylark or play practical jokes while at work.

Remember, Every Time You Take a Chance You Run the Risk of Being Killed or Injured—For the Sake of Your Wife and Children Resolve That You Will Be More Careful

THIS CAMPAIGN IS SUPPORTED IN THE INTERESTS OF HUMANITY BY THE FOLLOWING MANUFACTURING INTERESTS, FINANCIAL INSTITUTIONS, PUBLIC SERVICE CORPORATIONS, INSURANCE COMPANIES, FIRMS AND INDIVIDUALS

The Pennsylvania Railroad Company
The Philadelphia & Reading Railway Co.
The Philadelphia & Reading Coal & Iron Co.
The Baldwin Locomotive Works
The Penn Mutual Life Insurance Co.
The Corn Exchange National Bank of Phila.
Insurance Company of North America
Traylor Engineering & Mfg. Co.
Traylor Shipbuilding Corporation
Harrisburg Pipe & Pipe Bending Co.
General Accident Fire and Life Insurance Corp., Ltd.
Martin & Wm. H. Nixon Paper Co., Inc.
Typothetae of Phila. (Master Printers' Assoc.)
The Wm. Cramp & Sons Ship and Engine Building Co.
Philadelphia Rapid Transit Company
Samuel T. Bodine, Pres. J. G. I. Co.
The Pennsylvania Co. for Insurances on Lives and Granting Annuities
The Home Life Insurance Co. of America, Philadelphia, Pa. Basil S. Walsh, Pres.
Central Market Street Co., Proprietors of Victoria, Globe, Ruby, Princess, Savoy, Market Street and Auditorium Theatres
The Philadelphia Contributionship for the Insurance of Houses From Loss by Fire

Liberty Mutual Insurance Co.
Formerly Mass. Employees Insur. Assn.
John B. Stetson Co.
D. G. Dery
John Lucas & Co., Inc.
Midvale Steel & Ordnance Co.
American Bridge Co.
J. S. Wentz Co.
Sauquoit Silk Mfg. Co.
Philadelphia Electric Co.
Atlantic Refining Co.
Lukens Steel Co.
David Lupton's Sons Co.
Nagle Steel Co.
Aberfoyle Mfg. Co.
Champion Blower & Forge Co.
Ballinger & Perrot
Bernstein Mfg. Co.
First National Bank of Phila.
Abrasive Company
Crew-Levick Co.
The Bank of North America
Freihofer Baking Co.
L. G. Graff & Son
Quaker City Cab Co.
Alexander Brothers
Bethlehem Steel Company
American Baptist Assn.
W. Atlee Burpee & Co.
J. T. Jackson Co.

The Autocar Company
The J. G. Brill Company
Louis J. Kolb
A. F. Bornot Bro. Co.
Norfolk & Western Railway
Curtin & Brockie
Philadelphia Paper Mfg. Co.
Graham, Parsons & Co.
Antonio Roig & Langsdorf
Union National Bank
John Gribbel
Edw. A. Schmidt
Robert K. Cassatt
Harrison's, Inc.
Charles E. Hires & Co.
Pure Oil Company
Delaware State College
Union Paving Co.
Armstrong Cork Co.
Kerr Paper Mill Co.
The Reading Stove Works
Harbison's Dairies
Frank Samuel
Buckwalter Stone Co.
F. S. Walton Company
American Electrotyping Co.
Watson Malone & Sons
The Sharples Separator Co.

Link-Belt Company
Joseph Stokes Rubber Co.
F. A. Bochmann & Co., Inc.
Isaac Hathaway Francis
American Dredging Co.
Atlas Powder Company
G. A. Bisler, Inc.
Chandler & Co., Inc.
E. W. Clark & Co.
Commercial Trust Co.
The Commonwealth Casualty Co.
Eddystone Ammunition Corp.
Garrett-Buchanan Co.
Harper & Turner
Ingersoll-Rand Co.
Geo. A. Huhn & Sons
Lehigh Portland Cement Co.
Alexander Kerr, Bro. & Co.
Northern Trust Company.
New Standard Hardware Co.
M. B. Laubach Co.
Charlemagne Tower
Stokes & Smith Co.
Slaymaker Lock Co.
Bristol Patent Leather Co.
Pennsylvania Mutual Liability Assn.
Hoopes & Townsend Co.
Wm. Amer Co.
S. W. Evans & Son

Ketterlinus Lithog. Mfg. Co.
Stead & Miller Co.
Day & Zimmermann, Inc.
Diamond State Fibre Co.
Pooley Furniture Co., Inc.
American Railways Co.
Alan Wood Iron & Steel Co.
The Philadelphia Rubber Works Co.
Otto Eisenlohr & Bros., Inc. (Cinco)
Parkesburg Iron Co.
Chas. J. Webb & Co.
New Jersey Zinc Company
Henry Bower Chemical Mfg. Co.
Whiting-Patterson Co., Inc.
Primos Chemical Co.
The Downingtown Mfg. Co.
Sun Shipbuilding Co.
John Wood Mfg. Co.
J. Alfred Clark
Philadelphia Gear Works
Girard Iron Works
Aetna Foundry Co., Inc.
Fretz, Gross & Co.
Defiance Mfg. Co.
Cresson-Morris Co.
Estate Geo. Pabst
E. I. du Pont de Nemours & Co.
Coatesville Boiler Works
Farr & Bailey Mfg. Co.
The National Drug Co.

READ EACH OF THE ARTICLES TO COME