

Mr. Motorist, Obey the Law of the Road—Be Careful

The statute books teem with laws regulating the driving of automobiles on the public highways. All of these legal restrictions have only a single object—the elimination of automobile accidents, with their frightful toll of killed and wounded.

But there is one law not found on any statute book that is of more vital importance than all of the rest combined — a law as simple as it is obvious, but which, unfortunately, is not taken seriously by many motorists.

It is the Law of Common Sense Which Warns You Never to Take a Chance

The observance of this simple rule will do more to reduce to a minimum the total of automobile accidents than all the legislation that can ever be enacted.

Study the accounts of automobile accidents in the newspapers. In three cases out of four you will find they were the result of carelessness—some one took a chance.

Death Constantly Lurks at the Elbow of the Motorist Who

Drives on wet or slippery streets without equipping his tires with chains.

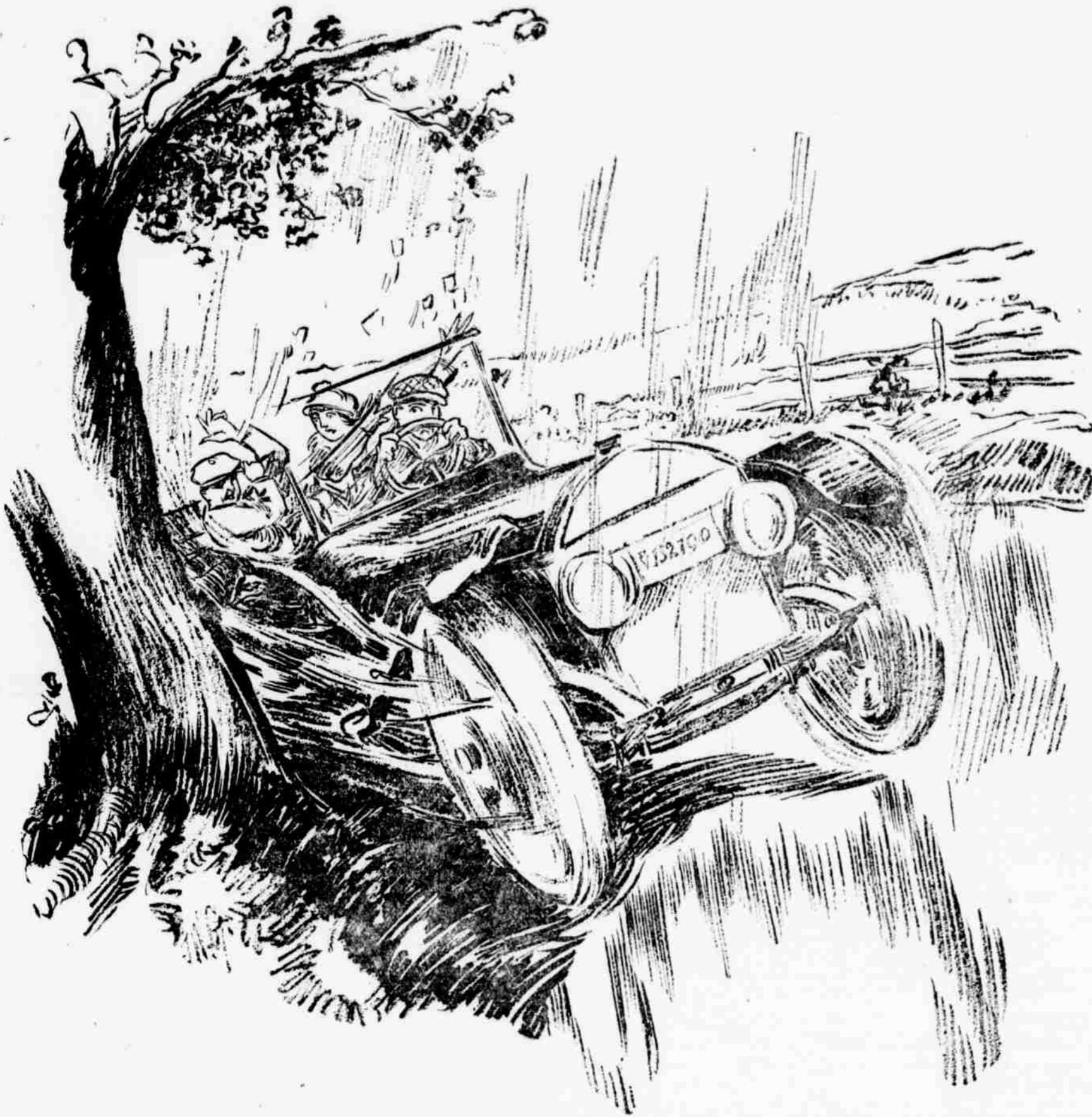
Attempts to cut in ahead of a trolley car or other auto on a crowded thoroughfare, or tries to cross car tracks in front of an approaching train.

Drives on the wrong side of the street.

Disregards the signals of the traffic policeman or disregards the speed limits proscribed by law.

Fails to use dimmers on his headlights at night. A glaring light blinds an approaching motorist, frequently causing fatal collisions.

Fails to stop and look carefully in both directions when approaching railroad tracks.



The Careful Driver Seldom Gets Into the Hospital or Police Court

THIS CAMPAIGN IS SUPPORTED IN THE INTERESTS OF HUMANITY BY THE FOLLOWING MANUFACTURING INTERESTS, FINANCIAL INSTITUTIONS, PUBLIC SERVICE CORPORATIONS, INSURANCE COMPANIES, FIRMS AND INDIVIDUALS

The Pennsylvania Railroad Company
The Philadelphia & Reading Railway Co.
The Philadelphia & Reading Coal & Iron Co.
The Baldwin Locomotive Works
The Penn Mutual Life Insurance Co.
The Corn Exchange National Bank of Phila.
Insurance Company of North America
Traylor Engineering & Mfg. Co.
Traylor Shipbuilding Corporation
Harrisburg Pipe & Pipe Bending Co.
General Accident Fire and Life Insurance Corp., Ltd.
Martin & Wm. H. Nixon Paper Co., Inc.
Typhothetae of Phila. (Master Printers' Assoc.)
The Wm. Cramp & Sons Ship and Engine Building Co.
Philadelphia Rapid Transit Company
Samuel T. Bodine, Pres. U. G. I. Co.
The Pennsylvania Co. for Insurances on Lives and Granting Annuities
The Home Life Insurance Co. of America, Philadelphia, Pa. Basil S. Walsh, Pres.
Central Market Street Co., Proprietors of Victoria, Globe, Ruby, Princess, Savoy, Market Street and Auditorium Theatres
The Philadelphia Contributionship for the Insurance of Houses From Loss by Fire

Liberty Mutual Insurance Co.
Formerly Mass. Employees Insur. Asso.
John B. Stetson Co.
D. G. Dery
John Lucas & Co., Inc.
Midvale Steel & Ordnance Co.
American Bridge Co.
J. S. Wentz Co.
Sauquoit Silk Mfg. Co.
Philadelphia Electric Co.
Atlantic Refining Co.
Lukens Steel Co.
David Lupton's Sons Co.
Nagle Steel Co.
Aberfoyle Mfg. Co.
Champion Blower & Forge Co.
Ballinger & Perrot
Bernstein Mfg. Co.
First National Bank of Phila.
Abrasive Company
Crew-Levick Co.
The Bank of North America
Freihofers Baking Co.
L. G. Graft & Son
Quaker City Cab Co.
Alexander Brothers
Bethlehem Steel Company
W. Atlee Burpee & Co.
J. T. Jackson Co.

The Autocar Company
The J. G. Brill Company
Louis J. Kolb
A. F. Bornot Bro. Co.
Norfolk & Western Railway
Curtin & Brockie
Philadelphia Paper Mfg. Co.
Graham, Parsons & Co.
Antonio Roig & Langsdorf
Union National Bank
John Gribbel
Edw. A. Schmidt
Robert K. Cassatt
Harrison's, Inc.
Charles E. Hires & Co.
Pure Oil Company
Delaware State College
Union Paving Co.
Armstrong Cork Co.
Kerr Paper Mill Co.
The Reading Stove Works
Harbison's Dairies
Frank Samuel
F. S. Walton Company
American Electrotype Co.
Watson Malone & Sons
The Sharples Separator Co.

Link-Belt Company
Joseph Stokes Rubber Co.
F. A. Bochmann & Co., Inc.
Isaac Hathaway Francis
American Dredging Co.
Atlas Powder Company
G. A. Bisler, Inc.
Chandler & Co., Inc.
E. W. Clark & Co.
Commercial Trust Co.
The Commonwealth Casualty Co.
Eddystone Ammunition Corp.
Garrett-Buchanan Co.
Harper & Turner
Ingersoll-Rand Co.
Geo. A. Huhn & Sons
Lehigh Portland Cement Co.
Alexander Kerr, Bro. & Co.
Northern Trust Company.
New Standard Hardware Co.
M. B. Laubach Co.
Charlemagne Tower
Stokes & Smith Co.
Slaymaker Lock Co.
Bristol Patent Leather Co.
Hoopes & Townsend Co.
Wm. Amer Co.
S. W. Evans & Son

Ketterlinus Lithog. Mfg. Co.
Stead & Miller Co.
Day & Zimmermann, Inc.
Diamond State Fibre Co.
Pooley Furniture Co., Inc.
American Railways Co.
Alan Wood Iron & Steel Co.
The Philadelphia Rubber Works Co.
Otto Eisenlohr & Bros., Inc. (Cinco)
Parkesburg Iron Co.
Chas. J. Webb & Co.
New Jersey Zinc Company
Henry Bower Chemical Mfg. Co.
Whiting-Patterson Co., Inc.
Primos Chemical Co.
The Downingtown Mfg. Co.
Sun Shipbuilding Co.
John Wood Mfg. Co.
J. Alfred Clark
Philadelphia Gear Works
Girard Iron Works
Aetna Foundry Co., Inc.
Fretz, Gross & Co.
Defiance Mfg. Co.
Cresson-Morris Co.
Estate Geo. Pabst
Coatesville Boiler Works
Farr & Bailey Mfg. Co.
The National Drug Co.

READ EACH OF THE ARTICLES TO COME