

PHILADELPHIA'S HALL OF FAME WILL BE BUILT BY THESE MEN PICKED TO GO TO FRANCE



WILLIAM J. DONOVAN  
1239 Duffor St.



THOMAS F. MAHER  
2514 S. Watta St.



MORRIS E. GOODMAN  
328 Spruce St.



FRANK BINOLDI  
1224 Summer St.



JAMES FRYER  
Second and Wharton Sts.



ERNEST C. THEISL  
408 S. Broad St.



ISADORE SCHIFF  
507 N. Marshall St.



FRANK SELY  
800 Huttonwood St.



LOUIS COHEN  
305 Cassell St.



VINCENT CATONE  
1630 S. Lehigh St.



THOMAS GARRITY  
1448 S. 29th St.



WILLIAM EDWARDS  
2023 Wharton St.



SLATER HENSLEY  
4204 Woodland Ave.



ALEXANDER JAMISON  
2112 Mifflin St.

HAS YOUR LOCAL DRAFT BOARD ACCEPTED YOU? ARE YOU READY TO JOIN THE NEW UNITED STATES ARMY WITHOUT CLAIMING EXEMPTION? IF SO, YOUR PICTURE BELONGS ON THIS PAGE Send your latest photograph to the Pictorial Editor. If you have no photograph, your picture will be taken without charge if you present yourself between the hours of 9 a. m. and 5 p. m. to the PHOTOGRAPHIC DEPARTMENT of the **Evening Ledger**



JOHN TAGGART  
2112 Mifflin St.



ARTHUR JACKSON  
2317 Federal St.



C. CRESS  
1419 Guenther St.



R. W. MATZEAS  
20 S. 33d St.



FRANK H. PARKER  
1325 S. Taylor St.



HOWARD PETERSON  
327 Chancellor St.



THOMAS J. MONAGHAN  
609 S. 29th St.



H. B. HURKY  
2219 Walnut St.



JORGUA D'URSO  
1214 S. Clarion St.



WALTER SHEPHERD  
2940 N. Stanley St.



KUNNIN PORTMAN  
2232 S. 19th St.



ANGELO MARIE LA PAZIA  
1429 Dickinson St.



BENJAMIN P. KEITH  
5707 Chestnut St.



EDWARD PETTINE  
817 E. Girard Ave.



W. J. SWEENEY  
2916 Ogden St.



EDWARD A. REICE  
1011 N. 60th St.



MICHAEL BLASKEW  
2218 Vine St.



WALTER HEIDMAN  
927 Spring St.



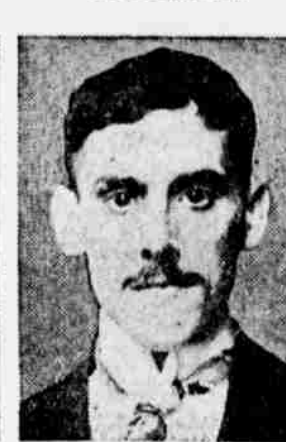
CONSTANTINE PADIES  
210 N. Camac St.



KONSTANTINE CUTRAS  
181 N. 21st St.



FRANK KEARNS  
142 N. 11th St.



H. LAPUME  
119 N. 18th St.

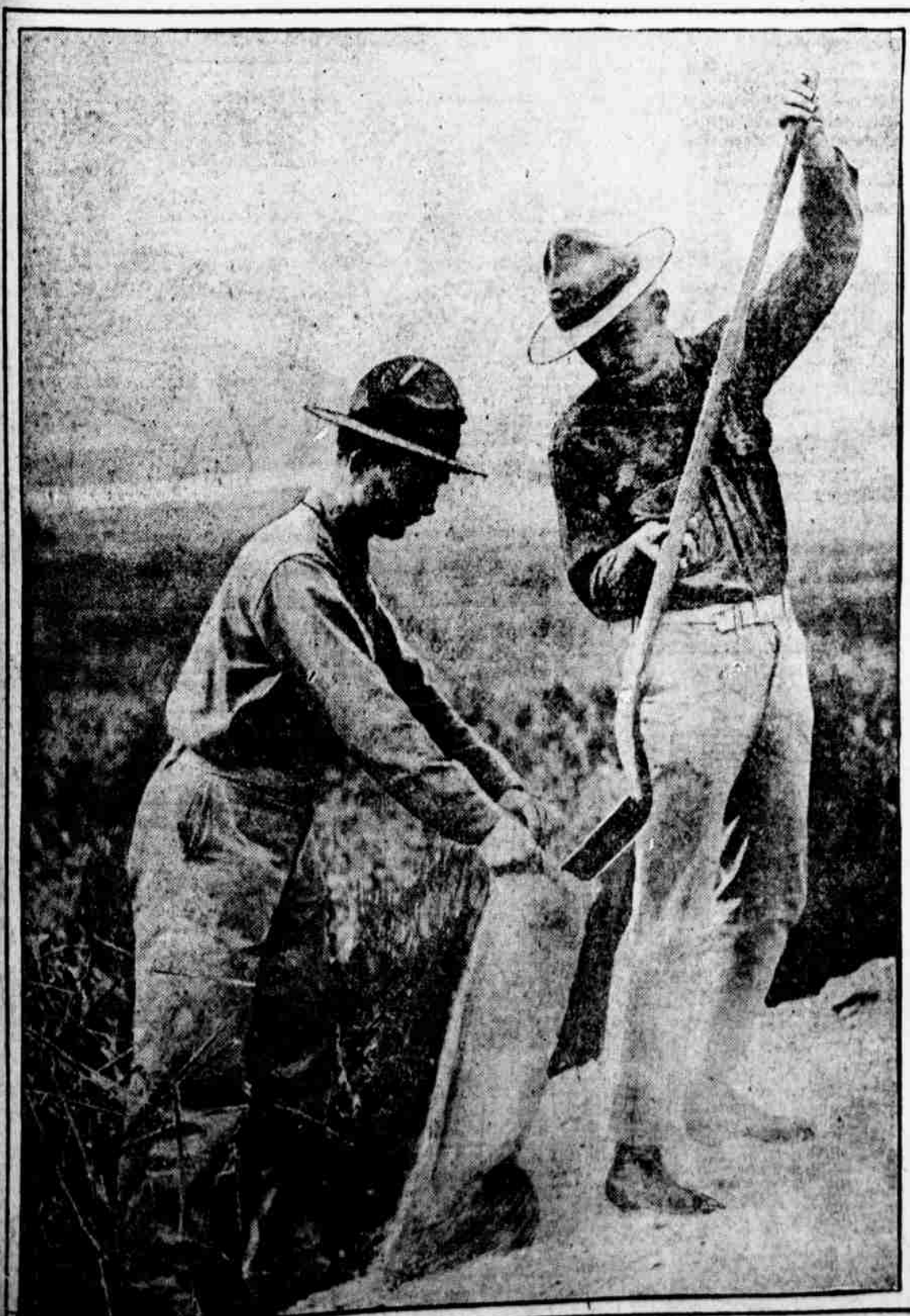


LEIGHTON V. SMITH  
2020 Arch St.



JAMES MOORE  
262 N. Warlock St.

SOME OF THE ENLISTED MEN WHO ARE AWAITING FINAL ORDERS FROM WASHINGTON



UNITED STATES MARINES PRACTICING TRENCH WARFARE OUTSIDE THE LEAGUE ISLAND NAVY YARD. THE MEN AT THE LEFT ARE LOADING SANDBAGS FOR PROTECTION OF THEIR TRENCHES, WHILE THE LARGE PHOTOGRAPH SHOWS THE TRENCHES BEING COVERED WITH EARTH TO FORM THE BREASTWORKS