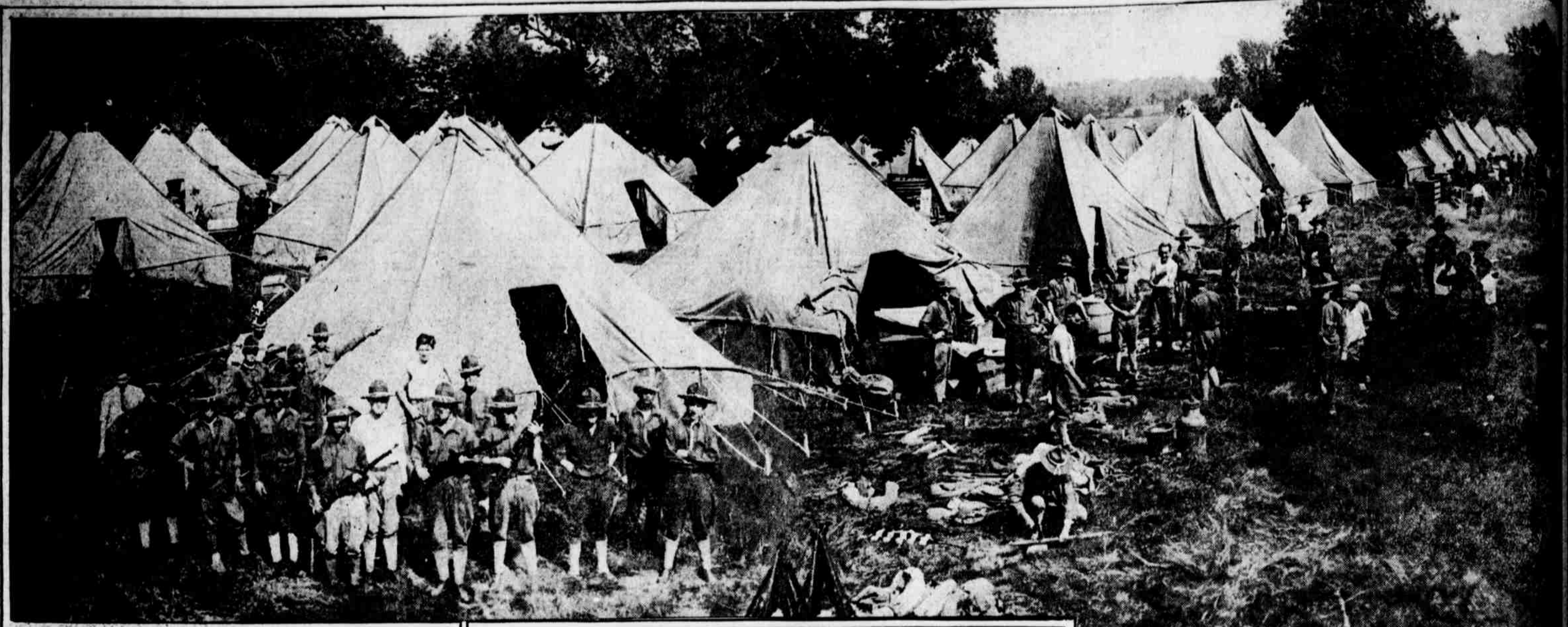


SIXTH REGIMENT GOES INTO CAMP AT DREXEL HILL AWAITING FURTHER ORDERS FROM WASHINGTON



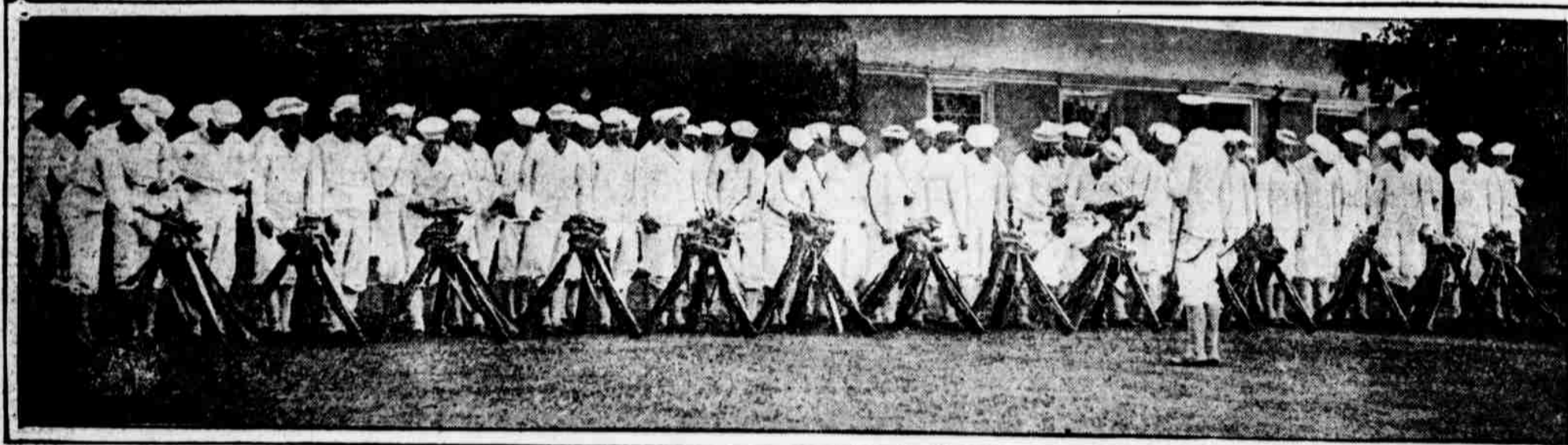
PANORAMA OF "CAMP ELLIS" IN WHICH THE PHILADELPHIA BATTALIONS OF THE SIXTH PENNSYLVANIA INFANTRY WILL WAIT UNTIL ORDERS TO DEPART FOR THE SOUTHERN TRAINING CAMP ARE RECEIVED



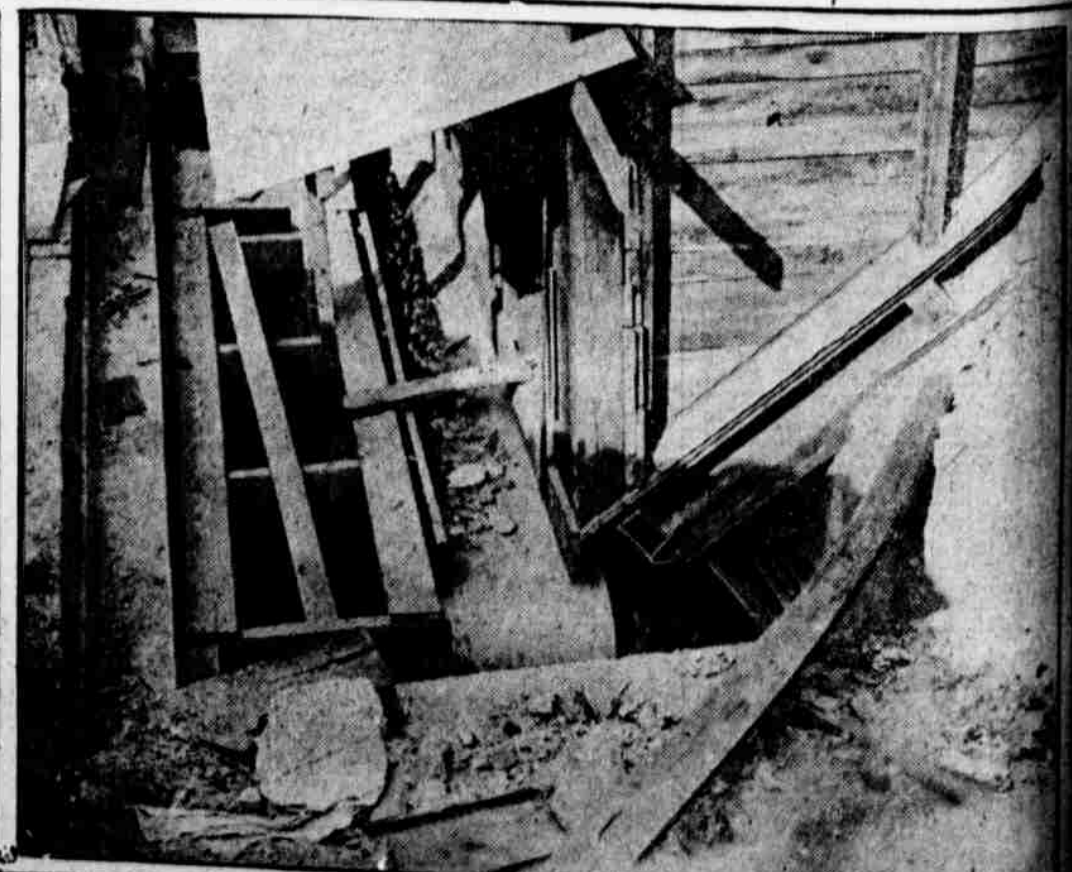
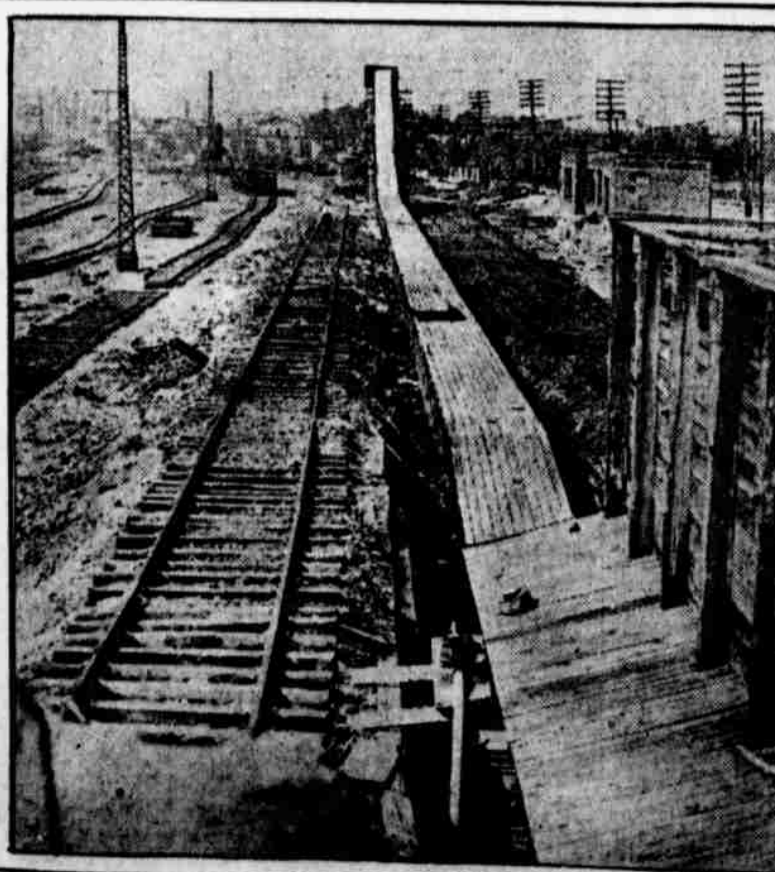
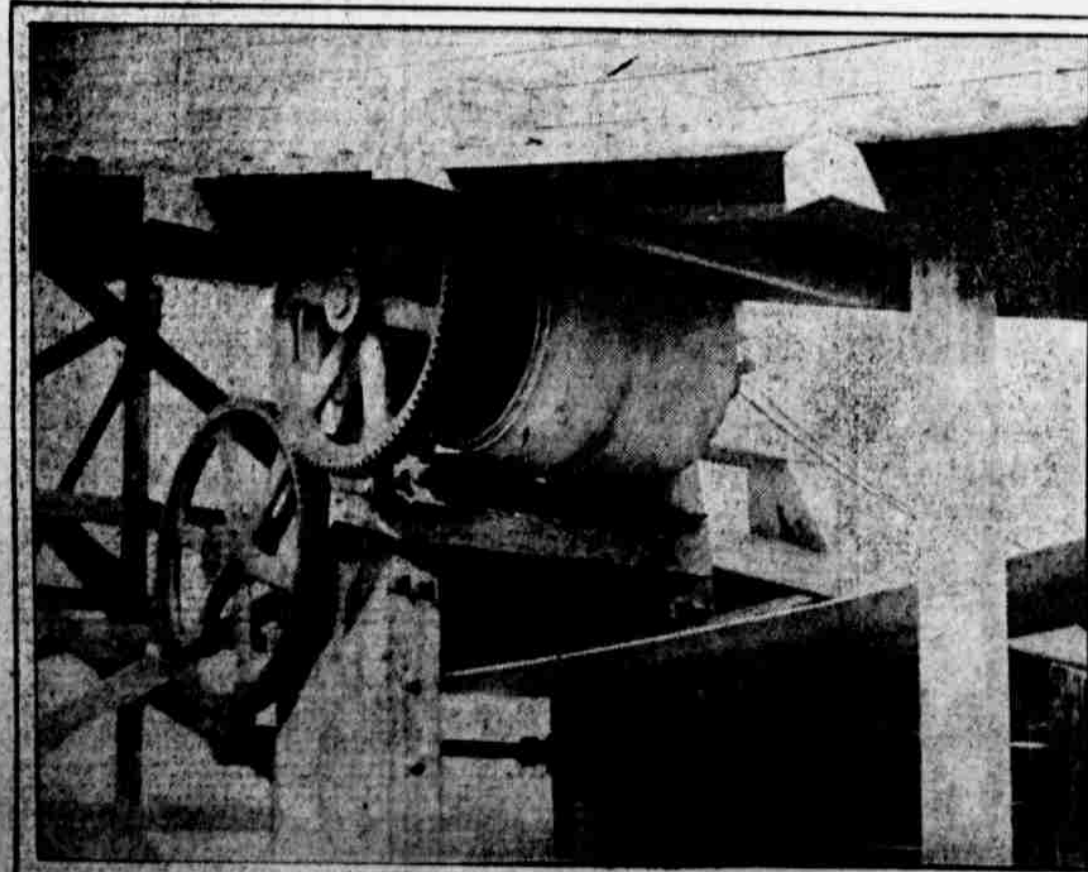
A GUN SQUAD WITH THE LEWIS GUN AND THE COMPANY'S MESS TENT AS "SNAPPED" BY AN EVENING LEDGER PHOTOGRAPHER SHORTLY AFTER ARRIVING IN CAMP



THE PHILADELPHIA BATTALION OF THE SIXTH REGIMENT EN ROUTE TO "CAMP ELLIS"



THE GERMANTOWN CRICKET CLUB, AT MANHEIM, TAKES ON A MARTIAL APPEARANCE WHEN SAILORS FROM THE LEAGUE ISLAND TRAINING STATION DRILL ON THE WELL-KEPT GREEN



THERE ARE SEVERAL KINDS OF ECONOMY, BUT THE ONE PRACTICED BY THE KEYSTONE STATE CONSTRUCTION COMPANY SEEMS TO BE THE MOST ECONOMICAL. The McNichol concern has the contract for part of the subway work and for filling in the new Pennsylvania Railroad separation freight station at Overbrook, so the contractors have decided to take the "excavation" from the one and use it as the "fill" for the other. They have installed this \$15,000 electrically driven belt conveyor at the Pennsylvania Railroad yards at Margie street and Sedgley avenue, North Philadelphia. At the left is the driving apparatus for the 1100-foot belt, which travels along the ground and shows in the center, picking up material at the receiving end, seen at the right, and carries it to forty-foot towers at the delivery end—in the background of the central picture. Here it is loaded on to dump cars and taken to Overbrook. The structural steel towers in the center picture are for the construction of the Overbrook branch of the Pennsylvania Railroad.