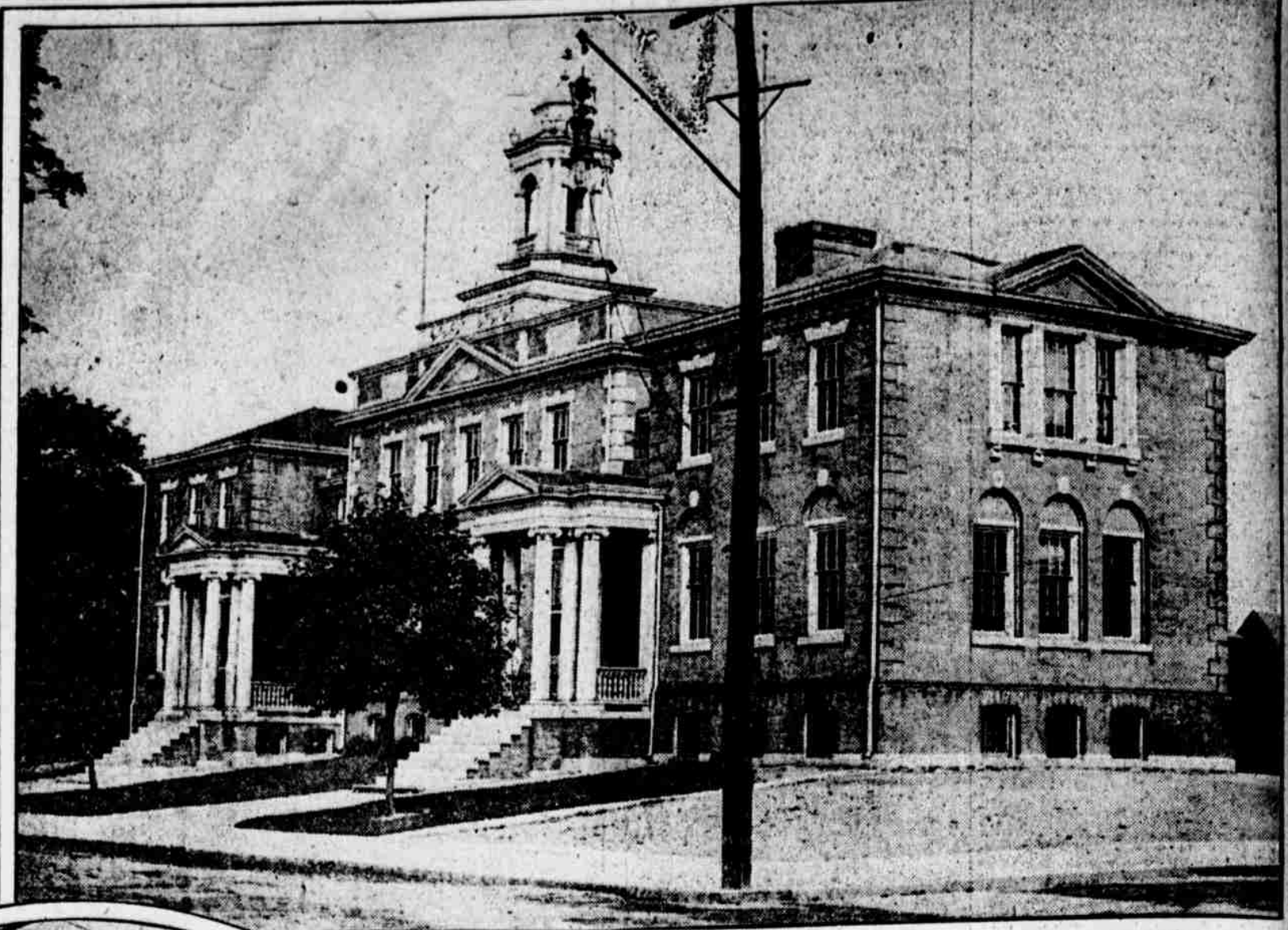


LEBANON NESTLES PICTURESQUELY IN THE VALLEY TO WHICH IT GIVES ITS NAME

Photographs by Evening Ledger Staff Photographers.



HERE MOST OF THE CITY'S SHOPPING IS DONE
Cumberland street, between Eighth and Ninth, the pulsing center of a retail trade that embraces many surrounding communities.



LEBANON BOASTS OF ITS EDUCATIONAL FACILITIES
The Washington School, at Third and Chestnut streets, is one of the evidences of this efficiency.

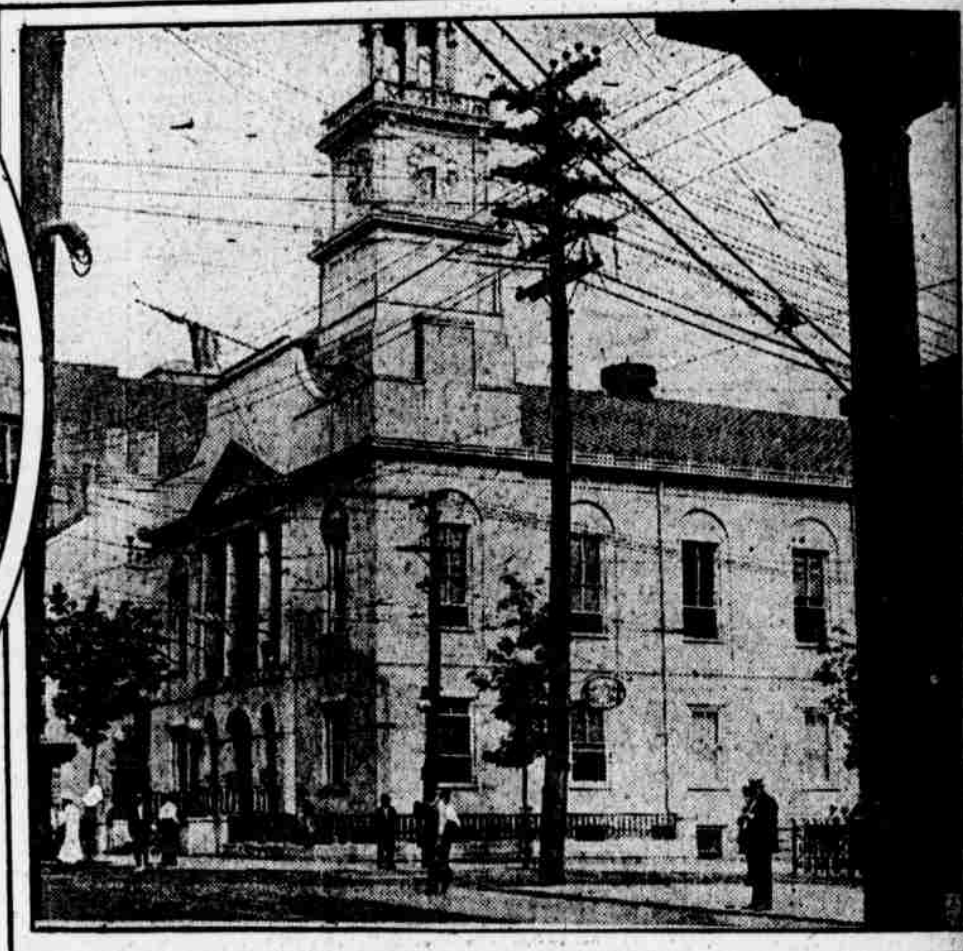


ALL LEBANON KNOWS "HIS HONOR, THE MAYOR"
The responsibilities of administering the municipal laws weigh lightly upon the shoulders of George F. Spang.



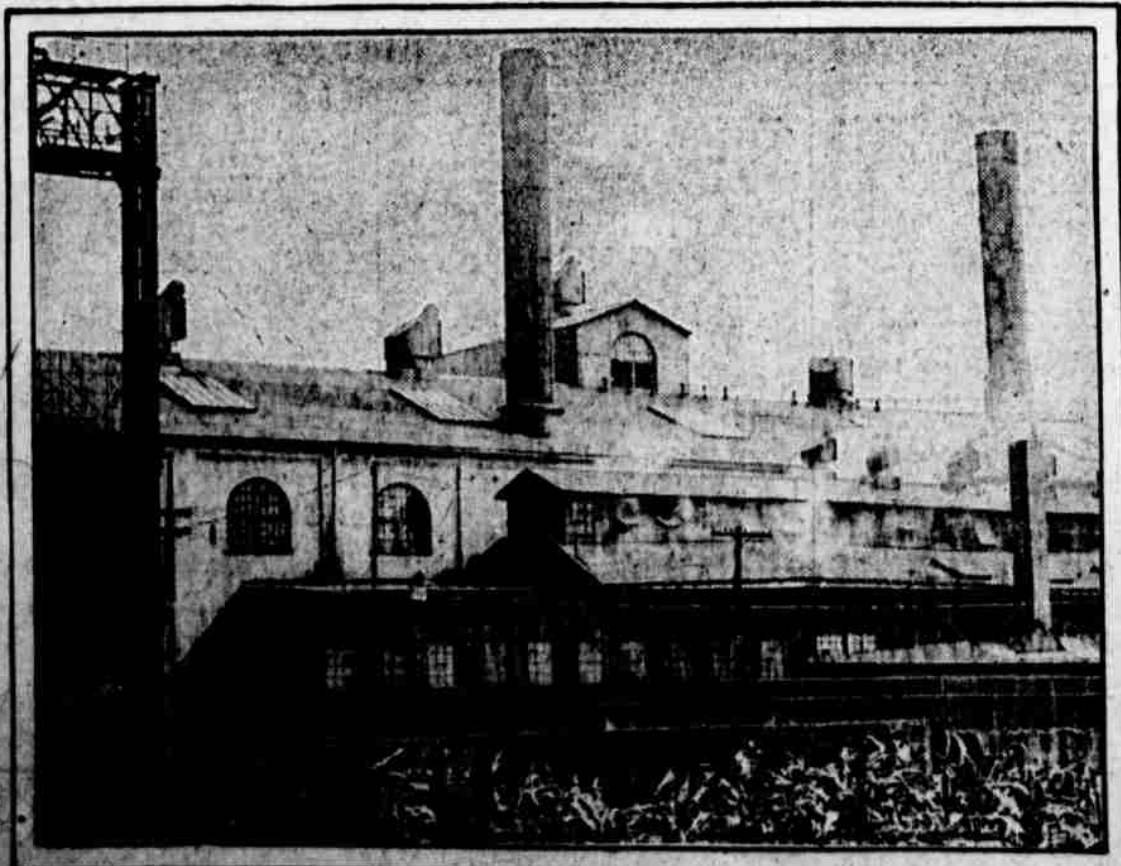
NEW HOME OF THE
FIRST NATIONAL
BANK

Rated as one of the soundest financial institutions in the State, this corporation occupies an appropriately substantial and up-to-date headquarters in the heart of the city in which most of its depositors reside.



THE COURTHOUSE IS
ONE OF THE CITY'S
LANDMARKS

As the "capital" of Lebanon County, the city has been the scene of many important legal combats, the building here shown serving as the theatre of battle.



LEBANON ALSO CONTRIBUTES TO THE BRAUN OF THE NATION
The former plant of the American Iron and Steel Company has passed to the Bethlehem Steel Works, but its activity has increased to the mutual advantage of owners and the city in which it is located.



DEEDS OF THE FATHERS INSPIRE THE CITY'S PATRIOT
SONS

The Soldiers and Sailors' Monument, dedicated to the "Boys of '81," occupies a central position in Monument Park, at Eighth and Lehman streets.



LEBANON'S DIRECTOR OF PUBLIC SAFETY

As guardian of the lives and property of its citizens, J. Herbert Mandock is one of the busiest officials in the municipal cabinet.