

# AS THOUGH BY MAGIC THE ENCAMPMENT FOR PHILADELPHIA'S DRAFTED ARMY IS ARISING

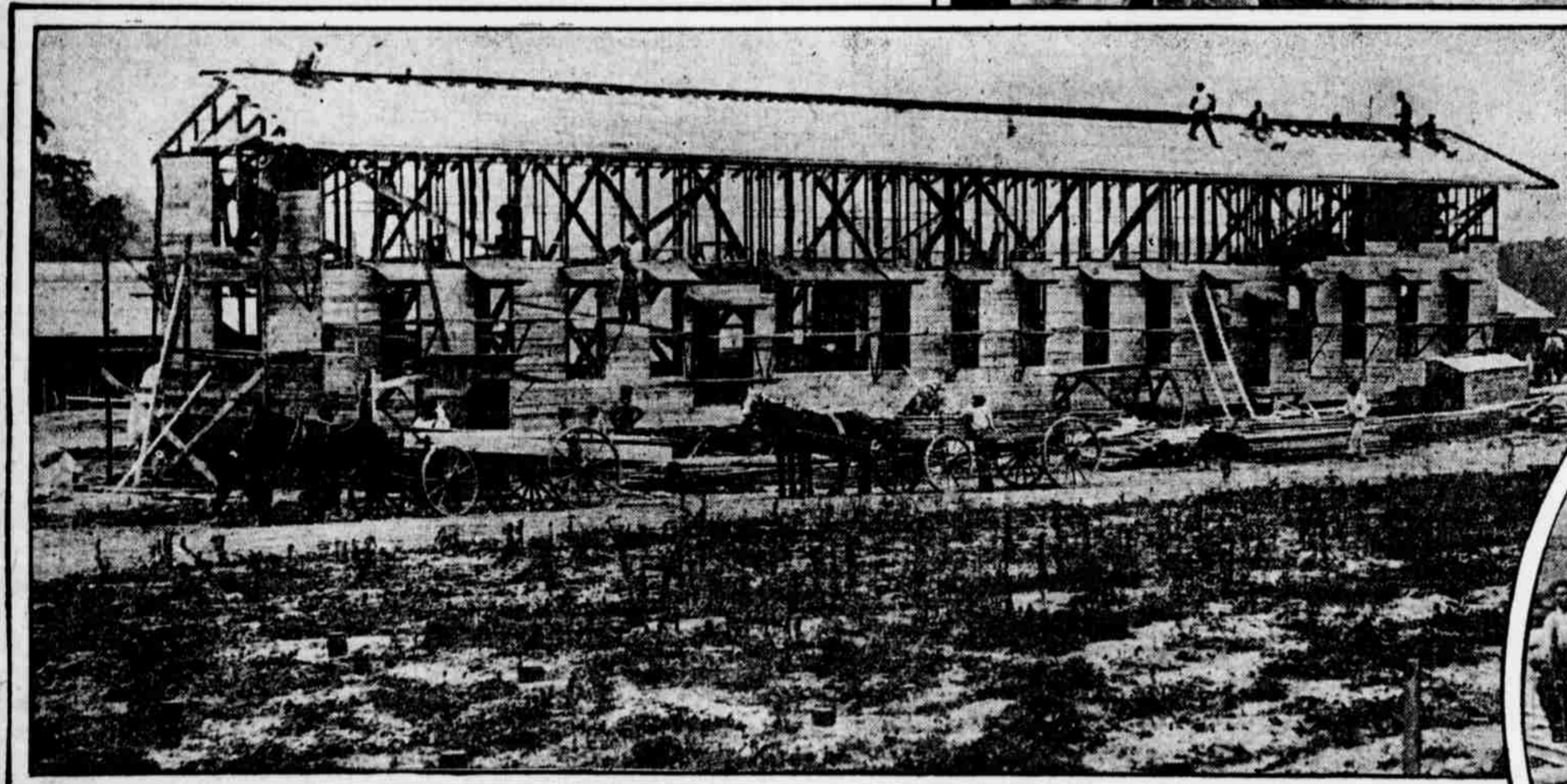
Photographs by Evening Ledger Staff Photographer.



**THE END OF A BOTHERSOME STUMP**  
Great charges of dynamite are being used to clear the camp site near the village of Admiral, Md.



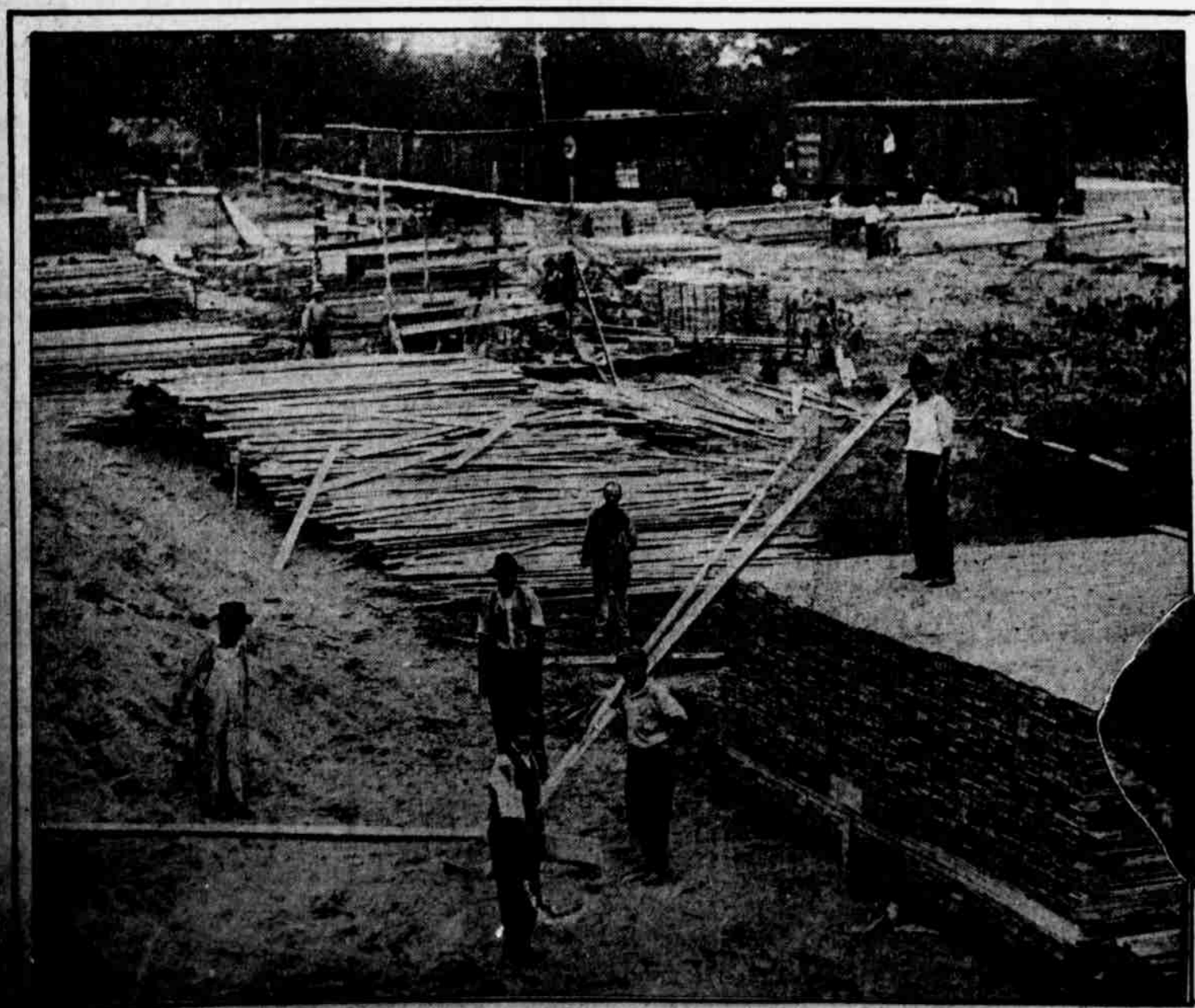
**ADVANCE GUARDS OF UNCLE SAM**  
A quartet of army officers overseeing the work of constructing the encampment. Left to right, Captain E. F. Padget, Major R. F. Proctor (in command), Captain H. E. Rose, Jr., and Captain S. J. Garges.



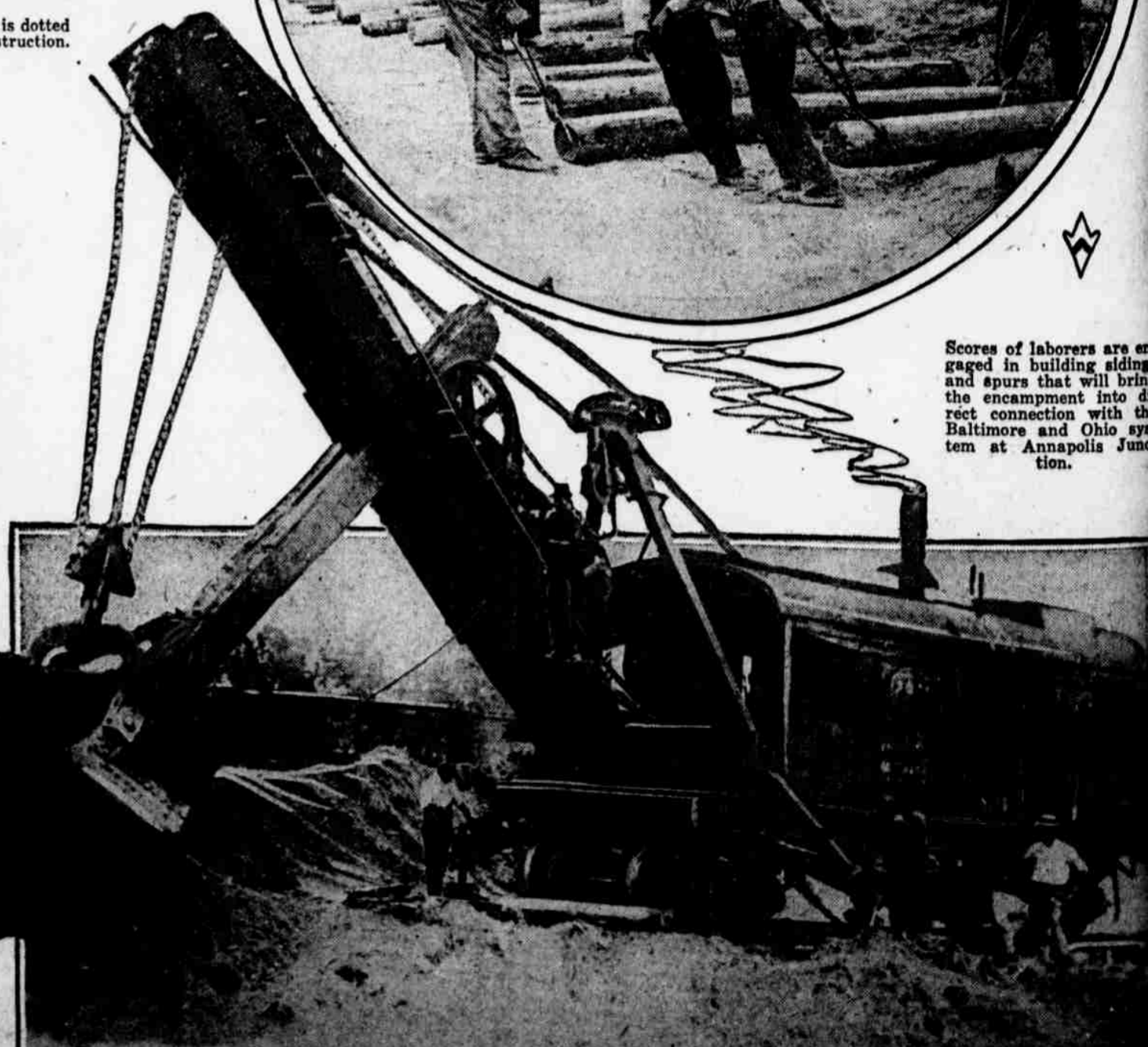
**WHERE SOME OF THE PHILADELPHIA SOLDIERS WILL ASSEMBLE AT MESS**  
Several weeks ago from this vantage point one could have an unbroken view of rolling farmland and wooded hills. Today the skyline is dotted with wooden buildings that will house and give comfort to the student soldiers. The photograph shows a mess hall in the process of construction.



Scores of laborers are engaged in building sidings and spurs that will bring the encampment into direct connection with the Baltimore and Ohio system at Annapolis Junction.



**HUNDREDS OF TONS OF LUMBER FOR THE BARRACKS ARE BEING UNLOADED**  
The lumber is being used to build a barracks shelter for an army camp of drafted soldiers is baronian, to say the least.



**A STURDY SOLDIER CONSCRIPTED BY UNCLE SAM**  
A ton a minute is the achievement of this steam shovel which is leveling off the camp site.