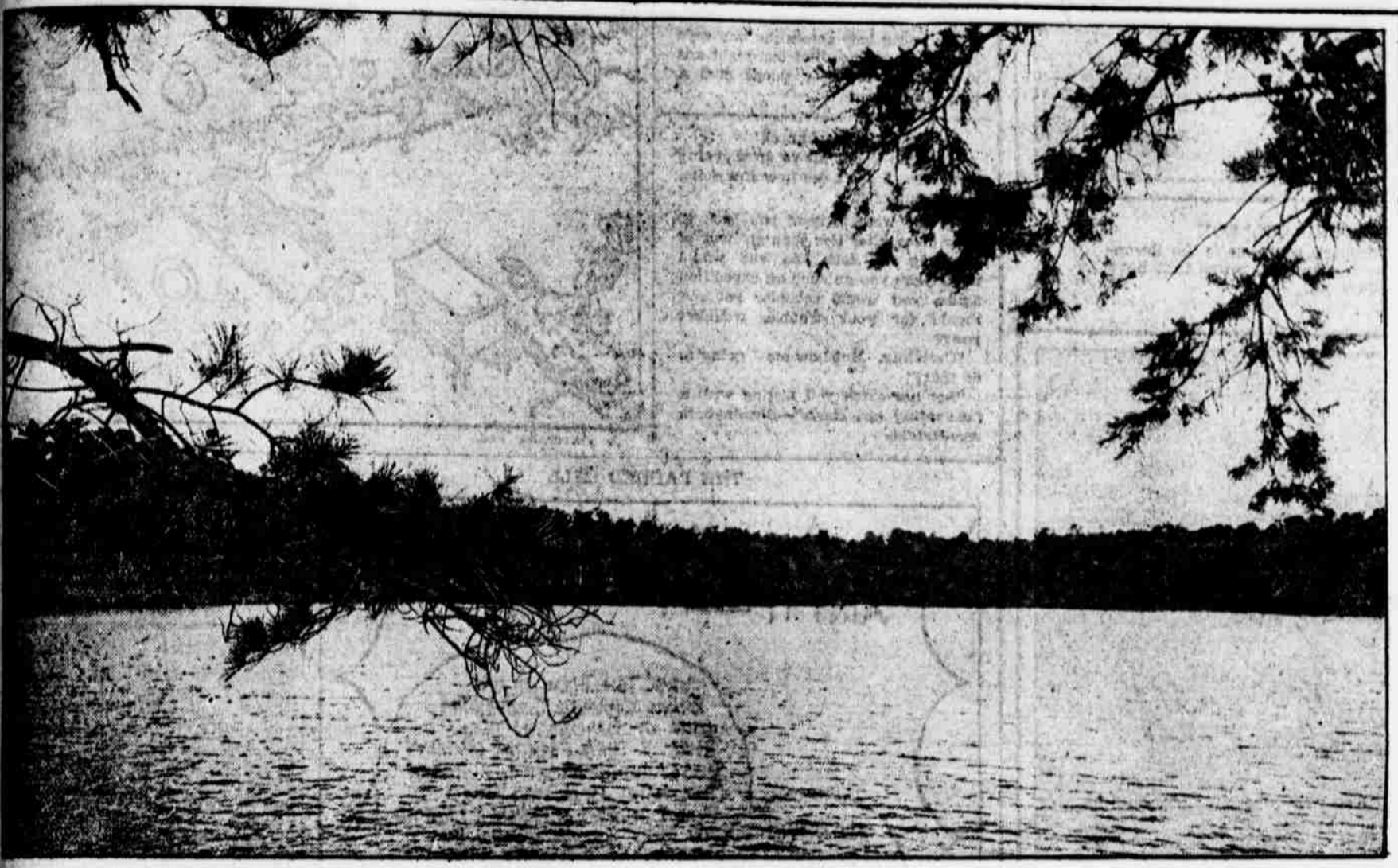


DELIGHTS OF A WINTER RESORT AWAIT PENNSYLVANIA TROOPS WHO TRAIN IN GEORGIA



BIRDSEYE VIEW OF THE PROJECTED SITE FOR CAMP HANCOCK, NEAR AUGUSTA.
On this terrain was situated Camp McKenzie, a Spanish-American War fame. The new European war encampment will embrace more than 2000 acres, just four times the space required in 1898. For this vast site the Government will pay the modest sum of \$1 for a period of two years, a group of citizens having subscribed a fund to buy up the crops and property rights from the owners.



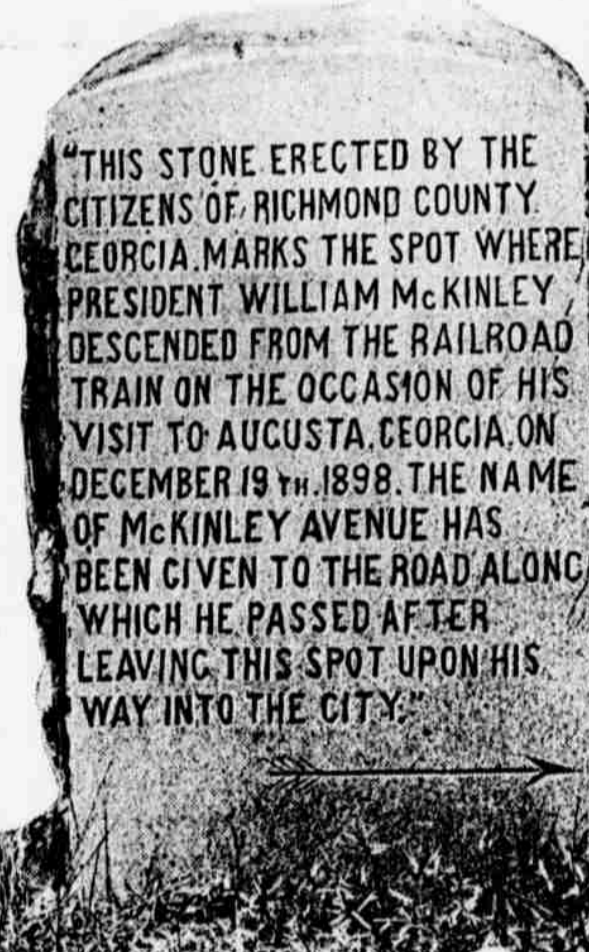
NATURE FURNISHES THE TROOPS AN IDEAL SWIMMING POOL.
Beautiful Lake Aumond is just three-fourths of a mile removed from the camp site. Its shores are fringed with groves of fragrant pines with which that section of Georgia abounds. Its waters are crystal clear.



JUST THE SPOT FOR A BIVOUCAC, WITH PINE NEEDLES FOR A BED.
The slender conifers in the vicinity of Camp Hancock seem to aspire to reach the dome of heaven. The site itself stands 500 feet above the sea.



THE TINY STATION AT WHELESS IS FATED TO BECOME A TEEMING TERMINAL.
Almost in a twinkling, once the influx of troops begins, the 17,000 men will transfer the peaceful countryside into a vast war camp. The main camp site stands 300 feet above Wheless Station.



"THIS STONE ERECTED BY THE CITIZENS OF RICHMOND COUNTY, GEORGIA, MARKS THE SPOT WHERE PRESIDENT WILLIAM MCKINLEY DESCENDED FROM THE RAILROAD TRAIN ON THE OCCASION OF HIS VISIT TO AUGUSTA, GEORGIA, ON DECEMBER 19TH 1898. THE NAME OF MCKINLEY AVENUE HAS BEEN GIVEN TO THE ROAD ALONG WHICH HE PASSED AFTER LEAVING THIS SPOT UPON HIS WAY INTO THE CITY."

A MARTYR'S FOOT ONCE TROD THIS SPOT.
Stone memorial marking the spot at Wheless Station where President McKinley first set foot on Camp McKenzie in 1898.



THE WATER WORKS PUMPING STATION ON THE EDGE OF CAMP HANCOCK, WHERE WATER IS DRAWN DAILY FROM SAVANNAH RIVER FOR USE OF THE CITY OF AUGUSTA.



AN INVITING STRETCH OF ROAD ALONG LAKE AUMOND, NEAR THE SITE FOR CAMP HANCOCK.