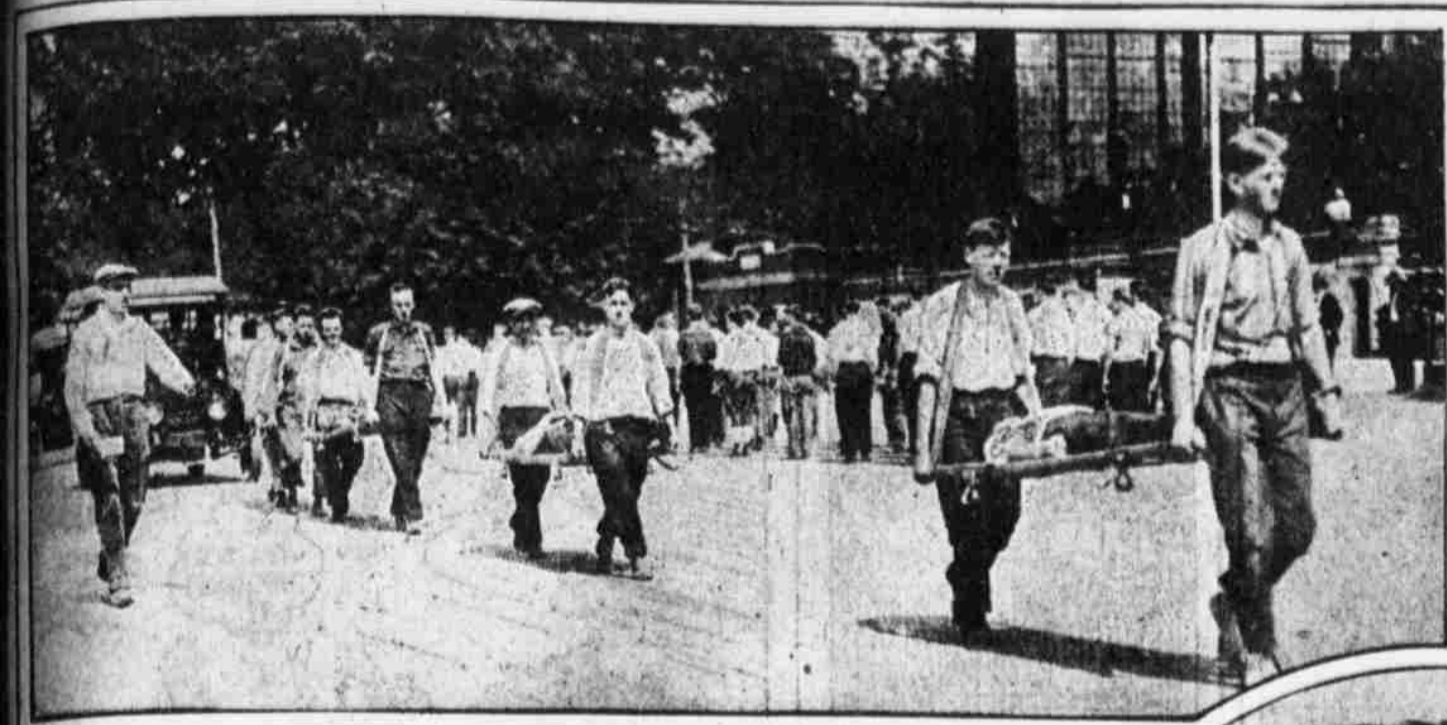


THE SERIOUS AS WELL AS THE LIGHTER SIDE OF LIFE IN PICTURED VIEW



COLLEGE MEN PREPARE FOR DUTY ON THE BATTLEFRONT
University men training as stretcher-bearers at the Ambulance Training Corps camp at Allentown.



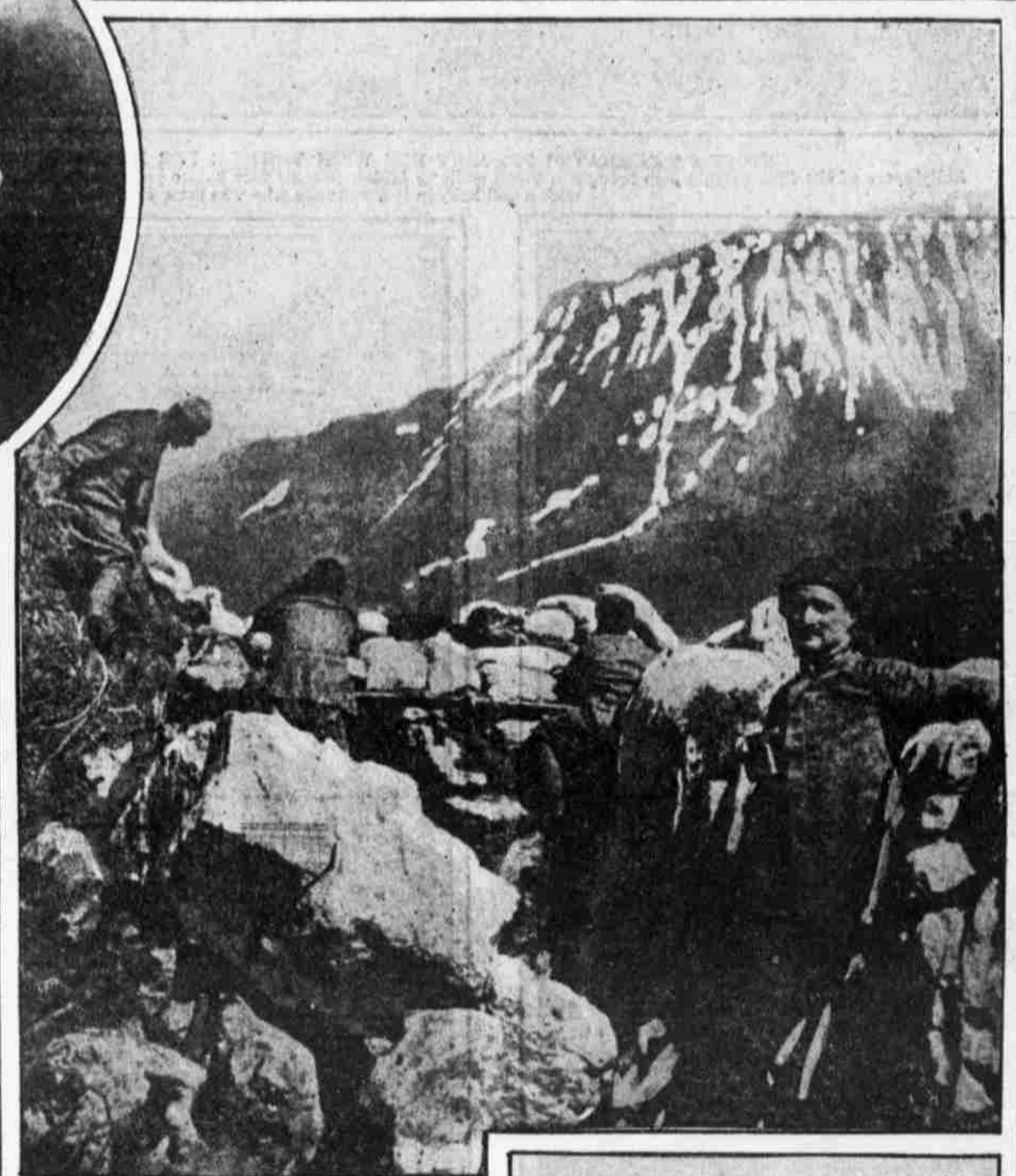
ALL THE WAY FROM THE PACIFIC'S SHORE
Leland Stanford University unit at Allentown waiting to depart for "somewhere in Europe" on its mission of mercy.



ADMINISTERING FIRST AID IN THE TRENCHES
Charles and Mary Baxter, 2425 South Sixth street, give a miniature Red Cross exhibition that is decidedly realistic.



SINGS AT WOODSIDE PARK
Edith M. Ellison's soprano voice will be heard with Rodia's orchestral accompaniment.



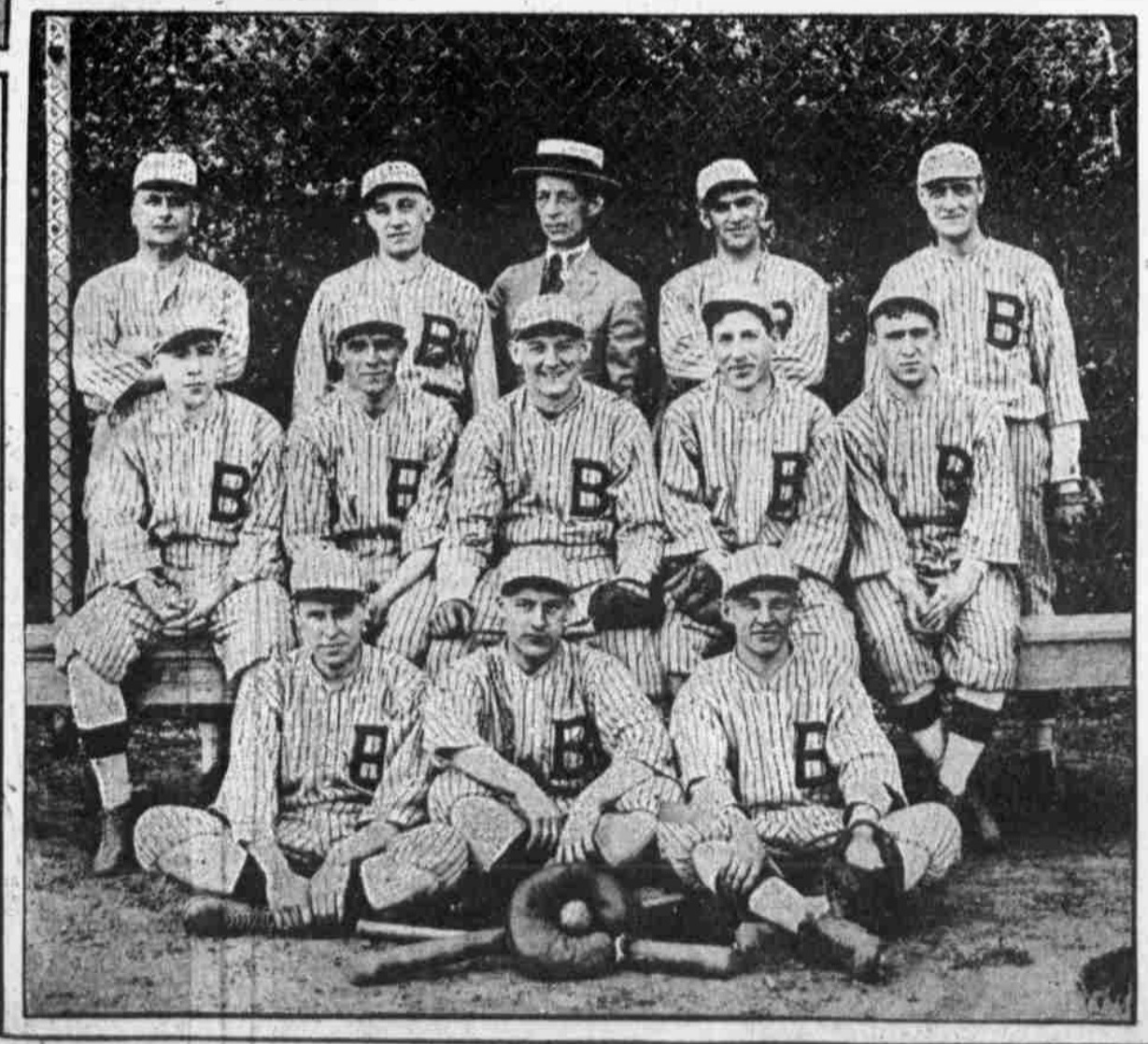
KEEPING WATCH ON THE AUSTRIANS
Italians at the end of a mountain trench maintain a lookout upon the enemy positions across the valley.



A VACATION AT HOME—NEED NOT BE A DULL ONE
No summer resort is more overcrowded with amusement seekers than the Belfield playground, Twenty-first street and Nedro avenue, on a clear summer Saturday.



BRANDED WITH "HIS" INITIALS
Miss Helene Altemus exhibiting a new Atlantic City fad. A sleeveless suit, court-pleated skirts, exposure to the sun, then removal of the hands and the fair one's arm bears her admirer's monogram in white on tan.



THE BECK ENGRAVING COMPANY BASEBALL TEAM
One of the fastest combinations in the ranks of the industrial leagues in and about Philadelphia.



A NEW EFFECT IN BATHING SUITS
Mrs. H. Kauffman wearing a modish creation of blue taffeta on the beach at Atlantic City.